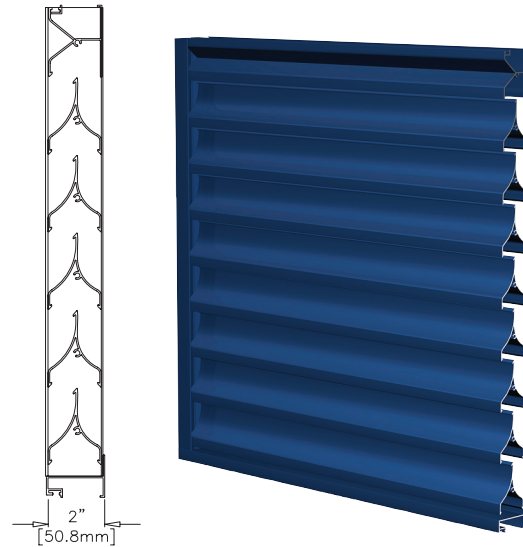




SIGHTPROOF LOUVER

Visible Mullion Louver Type	T5832
Material	Extruded Aluminum (Alloy 6063-T5)
Stationary Blade	0.063 in. (1.60 mm)
Frame	0.063 in. (1.60 mm)
Louver Depth	2 in. (50.8 mm)
Free Area – 4 ft. x 4 ft. Unit	3.75 sq. ft. (0.35 sq m)
Percent Free Area	23.4%
Free Area Velocity at Beginning Point of Water Penetration – 0.01 oz H₂O/sq. ft. Free Area	
516 fpm (2.62 m/s)	
Air Volume Flow Rate at Beginning Point of Water Penetration – 4 ft. x 4 ft. Unit	
1,935 cfm (0.91 m ³ /s)	
Pressure Drop at Beginning Point of Water Penetration	
0.10 in. H ₂ O (0.025 kPa)	



RECOMMENDED SPECIFICATION

GENERAL

Furnish and install where indicated on plans or described in schedules Aiolrite Louver Type T5832 as designed and manufactured by The Aiolrite Company LLC, Schofield, Wisconsin Louvers shall be furnished with bird screen, insect screen, supports, installation hardware and finishes as specified and as required for a complete installation.

SUBMITTALS

Manufacturer shall submit shop drawings incorporating key plans, elevations, sections and details showing profiles, angles and spacing of louver blades and frames; unit dimensions related to wall openings and construction; and, anchorage details and locations. Provide samples of manufacturer's finish and color charts showing the full range of colors available. For each type of product specified, submit free area, air performance and water penetration ratings determined in accordance with AMCA Standard 500-L.

PRODUCTS

Louvers shall be sightproof Louver Type T5832 with visible vertical mullions (or Louver Type CB5832 with concealed vertical mullions). Louvers shall be 2-inches (50.8 mm) deep and assembled entirely from extruded aluminum components. Blades and frames shall be 0.063-inch (1.6 mm) thick aluminum, alloy 6063-T5. Blades shall be horizontal, inverted-V type and spaced 2.75-inches (69.9 mm) on center.

OPTIONAL WELDED ASSEMBLY

Join stationary blade, head, sill and jamb frames with fillet welds concealed from view, unless the size of the louver makes screwed connections between louver sections necessary. Louver blades shall be joined to each jamb frame with fillet welds produced with the Pulsed Gas Metal Arc Welding (GMAW/Mig) process.

STRUCTURAL DESIGN CRITERIA

Maximum single section size for model T5832 is 84-inches wide x 120-inches high or 120-inches wide x 84-inches high. Larger openings require field assembly of multiple louver sections to make up the overall opening size. Individual louver sections are designed to withstand a 25 PSF wind load (please consult Aiolrite if the louvers must withstand higher wind-loads). Structural reinforcing members may be required to adequately support and install multiple louver sections within a large opening. Structural reinforcing members along with any associated installation hardware is not provided by Aiolrite unless indicated otherwise by Aiolrite. Options and accessories including, but not limited to, screens, filter racks, louver doors, and blank off panels are not subject to structural analysis unless indicated otherwise by Aiolrite. Additional information on louver installation may be found in AMCA Publication #501, Louver Application Manual.

PERFORMANCE RATINGS

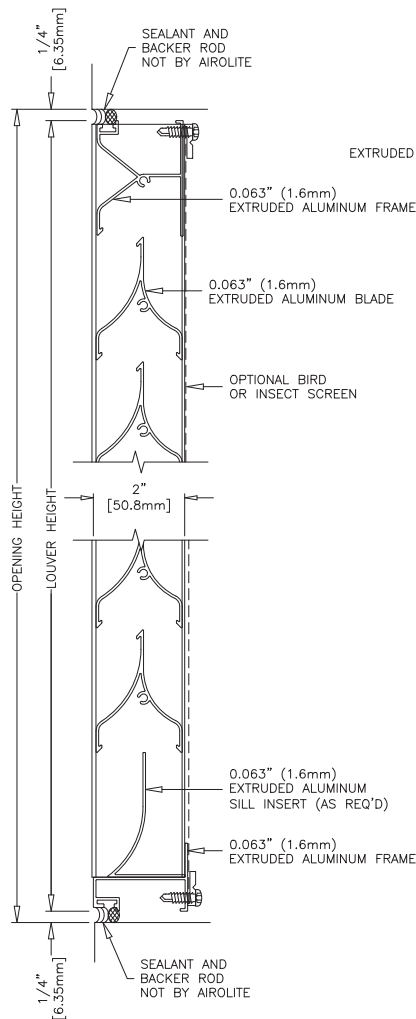
FREE AREA:	3.75 Square Feet (0.35 m ²)
MINIMUM FREE AREA VELOCITY at Beginning Point of Water Penetration:	516 fpm (2.62 m/s)
MINIMUM AIR VOLUME FLOW RATE at Beginning Point of Water Penetration:	1,935 cfm (0.91 m ³ /s)
MAXIMUM STATIC PRESSURE at Beginning Point of Water Penetration:	0.10 in. H ₂ O (0.025 kPa)

See page 4 for complete finish options

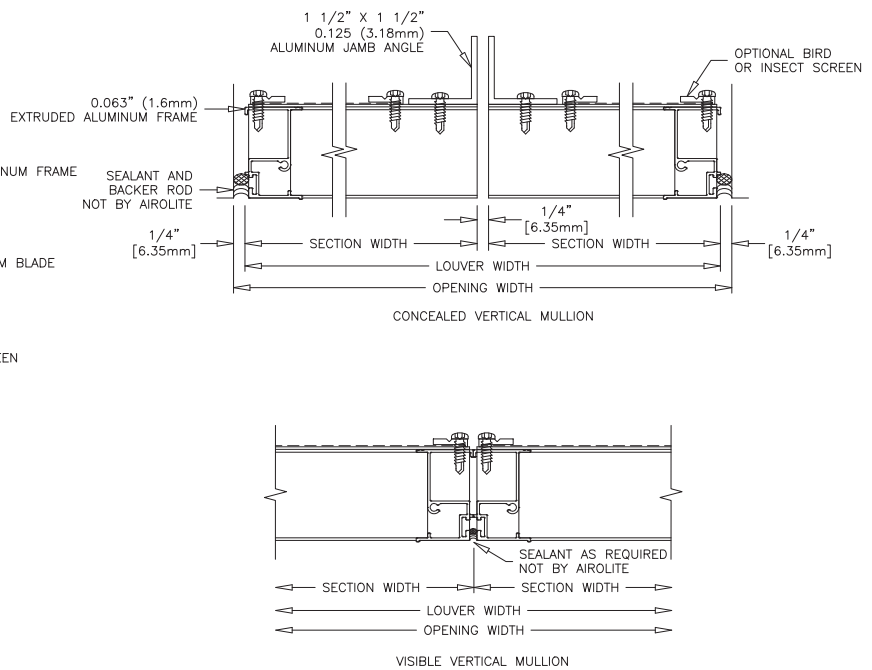
LOUVER TYPE T5832 PRODUCT DESCRIPTION & DETAILS

AIROLITE LOUVER TYPE T5832 is a 2-inch deep, extruded aluminum, sightproof louver intended for installations at grade or wherever security and resistance to intrusion are primary concerns. This design is especially suitable for applications with narrow or short openings that require greater free area than a four or six-inch deep sightproof louver can provide. The inverted V-blade is 100% sightproof when viewed from any orientation and poses a formidable barrier to intruding devices such as sticks and wires. Louver Type T5832 is an effective louver with AMCA Licensed air performance and water penetration ratings that enable designers to select and specify this product with confidence. Please contact your local Airlite representative or the factory for assistance with the layout and design of support systems when required.

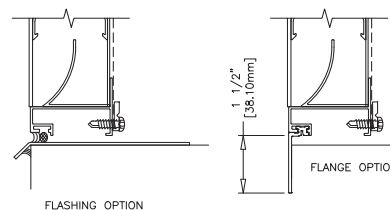
VERTICAL SECTION DETAIL



PLAN SECTION DETAIL



ACCESSORY ITEMS



Minimum Section Size:

6 in. (15 cm) W x 6 in. (15 cm) H

Maximum Section Size:

120 in. (305 cm) W x 120 in. (305 cm) H

*one dimension cannot exceed 84 in.

LOUVER TYPE T5832 PERFORMANCE RATINGS

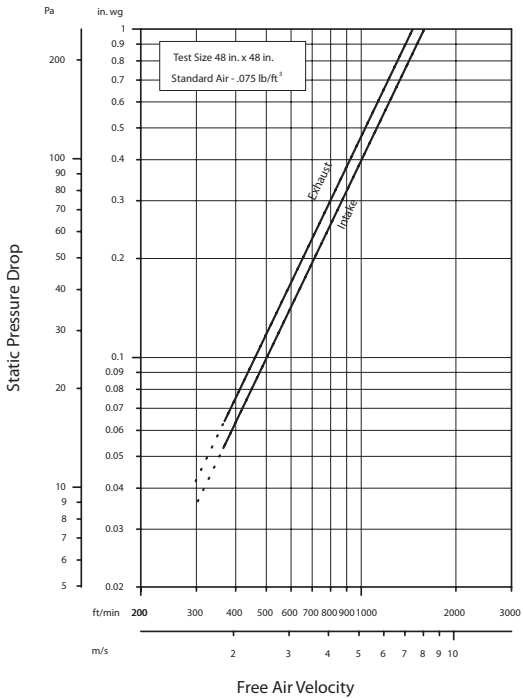
FREE AREA CHART - in square feet

Louver Height Inches	Louver Width in Inches													
	6	12	24	30	42	48	60	66	78	84	96	102	114	120
8	0.03	0.09	0.21	0.27	0.39	0.44	0.56	0.62	0.74	0.79	0.91	0.97	1.09	1.15
12	0.06	0.15	0.35	0.44	0.64	0.73	0.93	1.02	1.22	1.31	1.51	1.60	1.80	1.89
18	0.10	0.26	0.59	0.75	1.08	1.24	1.57	1.74	2.06	2.23	2.56	2.72	3.05	3.21
24	0.14	0.38	0.87	1.11	1.59	1.84	2.32	2.56	3.05	3.29	3.77	4.01	4.50	4.74
30	0.18	0.48	1.09	1.39	2.00	2.23	2.91	3.21	3.81	4.12	4.72	5.03	5.63	5.94
36	0.21	0.58	1.32	1.69	2.42	2.79	3.53	3.90	4.63	5.00	5.47	6.11	6.84	7.21
42	0.25	0.69	1.55	1.96	2.85	3.28	4.15	4.58	5.45	5.88	6.75	7.18	8.05	8.48
48	0.29	0.78	1.77	2.27	3.25	3.75	4.74	5.23	6.22	6.71	7.70	8.20	9.18	9.68
54	0.33	0.91	2.05	2.62	3.77	4.34	5.48	6.05	7.20	7.77	8.91	9.49	10.63	11.20
60	0.38	1.03	2.32	2.97	4.26	4.91	6.21	6.85	8.15	8.80	10.09	10.74	12.03	12.68
66	0.41	1.12	2.54	3.25	4.67	5.37	6.79	7.50	8.92	9.63	11.05	11.75	13.17	13.88
72	0.45	1.23	2.77	3.55	5.10	5.87	7.42	8.19	9.74	10.52	12.06	12.84	14.39	15.16
78	0.48	1.32	2.98	3.81	5.47	6.30	7.96	8.79	10.45	11.28	12.94	13.78	15.44	16.27
84	0.52	1.42	3.22	4.12	5.91	6.81	8.67	9.50	11.30	12.20	14.00	14.89	16.69	17.59
90	0.57	1.55	3.50	4.47	6.43	7.40	9.35	10.33	12.28	13.26				
96	0.61	1.64	3.72	4.75	6.83	7.87	9.94	10.98	13.05	14.09				
102	0.64	1.75	3.95	5.05	7.26	8.36	10.56	11.67	13.87	14.97				
108	0.68	1.85	4.18	5.35	7.68	8.85	11.18	12.35	14.69	15.85				
114	0.72	1.94	4.40	5.63	8.09	9.31	11.77	13.00	15.46	16.68				
120	0.76	2.07	4.68	5.99	8.60	9.90	12.52	13.82	16.43	17.74				

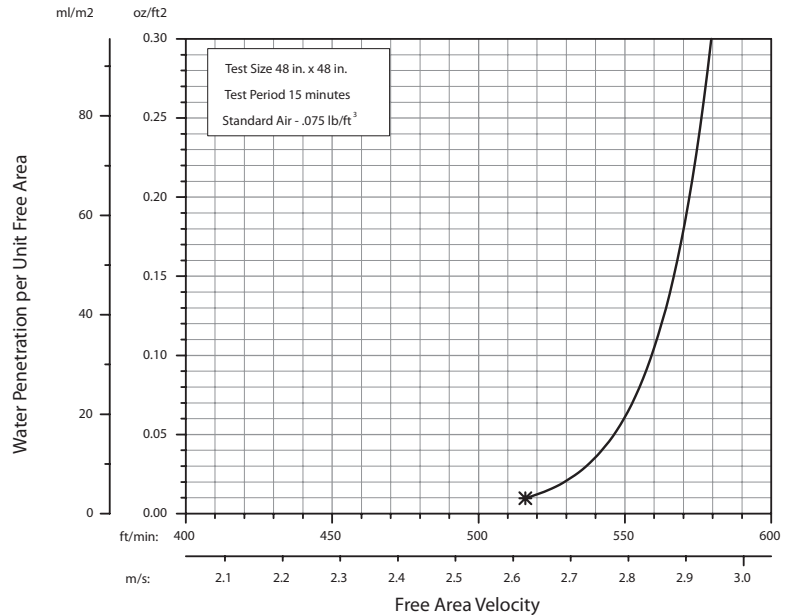


The Aiolite Company, LLC certifies that Louver Type T5832 shown herein is licensed to bear the AMCA seal. The ratings shown are based on tests and procedures performed in accordance with AMCA Publication 511 and comply with the requirements of the AMCA Certified Ratings Program. The AMCA Certified Ratings Seal applies only to Air Performance and Water Penetration ratings.

AIRFLOW RESISTANCE (Standard Air - .075 lb./ft.³)



WATER PENETRATION (Standard Air - .075 lb./ft.³)

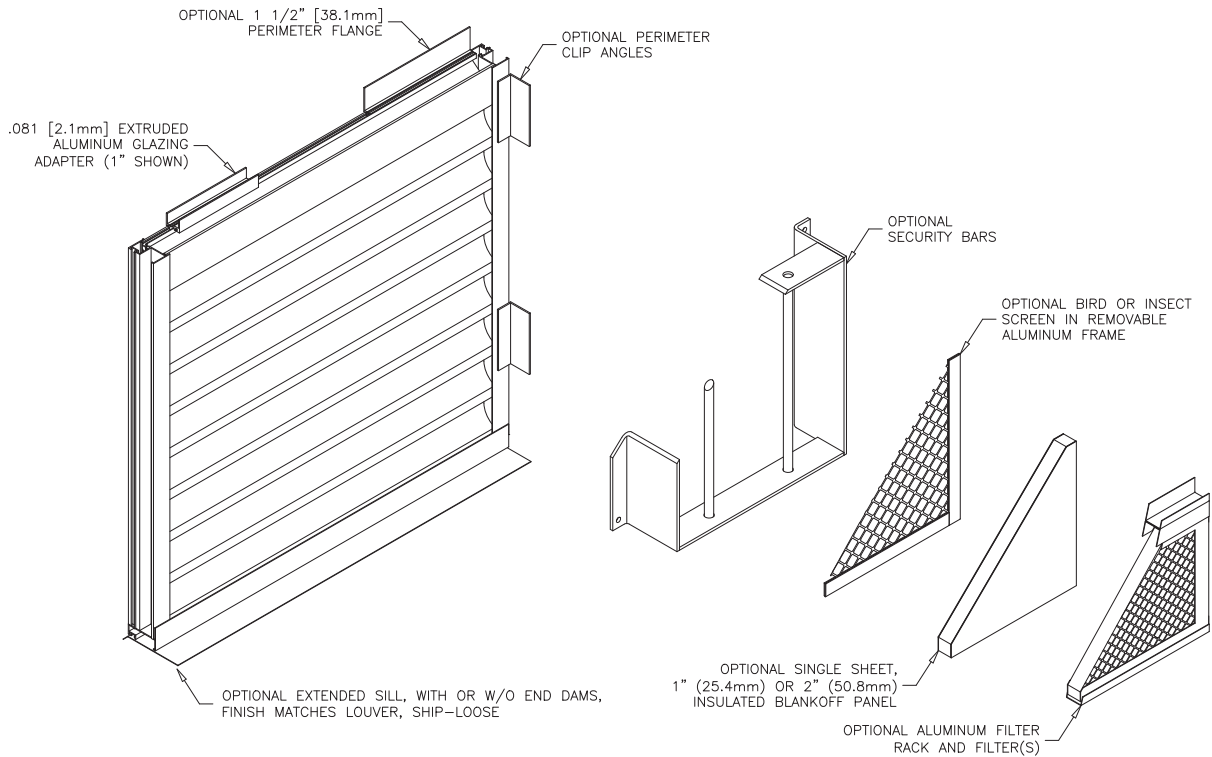


Louver Type T5832 resistance to airflow is shown with louver blades fully open. Resistance (pressure drop) varies depending on louver application (air intake or air exhaust). Free area velocities (shown) are higher than average velocity through the overall louver size.

The AMCA Water Penetration Test provides a method for comparing various louver models and designs as to their efficiency in resisting the penetration of rainfall under specific laboratory test conditions. The point of zero water penetration is defined as that velocity where the water penetration curve projects through .01 oz. of water (penetration) per sq. ft. of louver free area. ***The beginning point of water penetration for Louver Type T5832 is 516 fpm free area velocity.** These performance ratings do not guarantee a louver to be weatherproof or stormproof and should be used in combination with other factors including good engineering judgement in selecting louvers.

LOUVER TYPE T5832

METHOD OF INSTALLATION & ACCESSORY OPTIONS



FINISHES

Finish Type	Description/Application	Color Selection	Standard Warranty (Aluminum)
AAMA 2605 100% Fluoropolymer (FEVE) 2-Coat 70% Kynar® (PVDF) 3-Coat 70% Kynar® (PVDF) 4-Coat 70% Kynar® (PVDF)	"Best." The premier finish for extruded aluminum. Tough, long-lasting coating has superior color retention and abrasive properties. Resists chalking, fading, chemical abrasion and weathering.	Standard Colors: Any of the 27 standard colors shown can be furnished in 70% or 50% Kynar®, 100% Fluoropolymer or Baked Enamel. Mica Colors: Airlite offers 6 standard Mica colors for 70% Kynar® or 100% Fluoropolymer. Custom Colors: Custom color matching is available. Consult your Airlite representative for cost and/or lead-time implications if a custom color is required.	10 Years (20 Years Optional)
AAMA 2603 Baked Enamel	"Good." Provides good adhesion and resistance to weathering, corrosion and chemical stain.		1 Year
AA-M10C22A42 Integral Color Anodize	"Two-step" anodizing is produced by following the normal anodizing step with a second, colorfast process.	Light, Medium, Dark or Extra Dark Bronze; Champagne; Black	5 years
AA-M10C22A41 Clear Anodize 215 R-1	Clear, colorless and hard oxide aluminum coating that resists weathering and chemical attack.	Clear	5 years
AA-M10C22A31 Clear Anodize 204	Clear, colorless and hard oxide aluminum coating that resists weathering and chemical attack.	Clear	1 Year
Prime Coat	Louvers or architectural products shall be cleaned, pre-treated and receive a prime coat finish suitable for field painting. Airlite does not recommend prime coat or field painting of materials.		n/a
Mill	Materials may be supplied in natural aluminum or galvanized steel finish when normal weathering is acceptable and there is no concern for color or color change.		n/a

Finishes meet or exceed AAMA 2605, AAMA 2604, and AAMA 2603 requirements. Please consult www.airlite.com for complete information on standard and extended paint warranties. Paint finish warranties are not applicable to steel products.



P.O. Box 410, 525 Western Road, Schofield, WI 54476-0410 USA
 715.841.8757 • fax 715.841.8773 • www.airlite.com

Submittal T5832 August 2021
 Copyright ©2021 The Airlite Company, LLC

The Airlite Company, LLC reserves the right to make product changes.