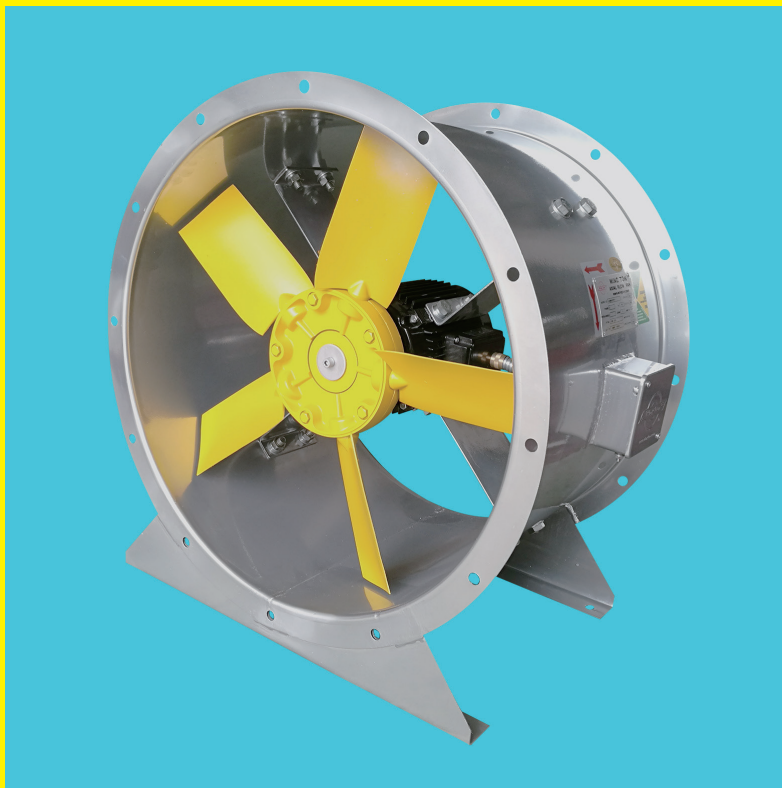




WING TON FAN INDUSTRY LIMITED



AXB SERIES ADJUSTABLE PITCH AXIAL FLOW FANS
CATA-AMCA-AXB JANUARY ,2021



AXB SERIES ADJUSTABLE PITCH AXIAL FLOW FANS

Wing Ton Fan Industry Limited certifies that the Axial Flow Fan – AXB240, 305, 380, 480, 610 and 760 shown herein are licensed to bear the AMCA Seal. The ratings shown are based on tests and procedures performed in accordance with AMCA Publication 211 and AMCA Publication 311 and comply with the requirements of the AMCA Certified Ratings Program.

The AMCA Certified Ratings Seal applies to FEG for Models AXB380, 480, 610 & 760 only.

The AMCA Certified Ratings Seal applies to air performance and sound for Models AXB240, 305, 380, 480, 610 and 760 only.



FOR AXB240, 305



FOR AXB380, 480, 610 & 760

The AXB Series of axial flow fans is available in an extensive range of variants and air flow performance. They can be manufactured to handle most conditions from ambient air and can be ordered in 6 sizes (240, 305, 380, 480, 610, 760mm) diameter. They are available in direct drive type and plate mounted type.



Typical Applications Commercial and industrial supply or exhaust air applications such as shopping centers, office buildings and car parks, through to industrial processes and equipment ventilation.

FEATURE

A. CASING

- Standard casings are made of steel
- Coated by strong epoxy powder.
- Equipped with complete flange and mounting feet.

B. IMPELLER

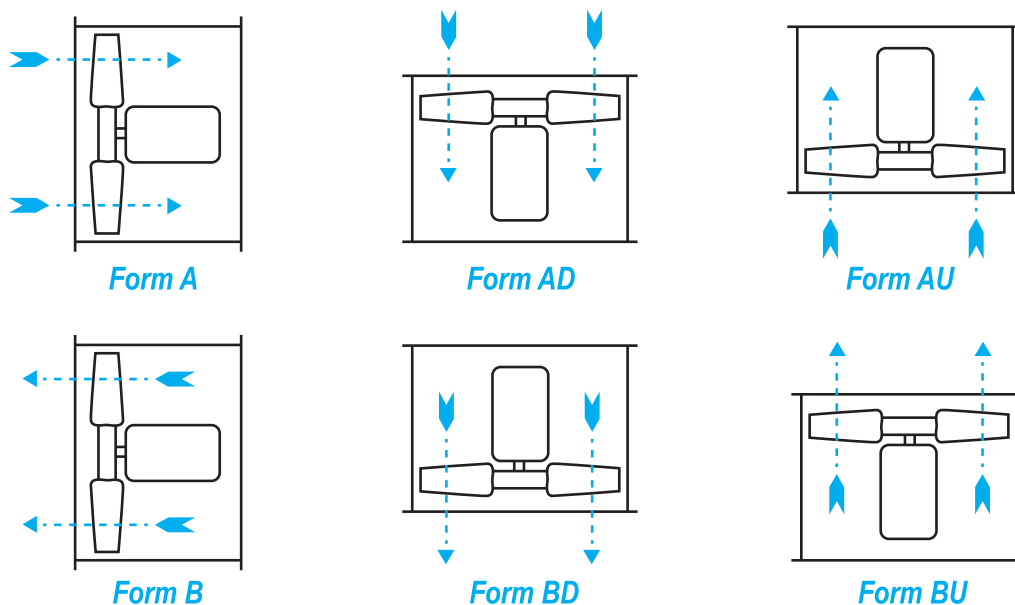
- All impellers are adjustable pitch aero foil section.
- Impeller material is made of die cast aluminum.
- With a specific impeller pitch angle, it ensures selections can be made accurately to the specification.

C. MOTOR

- The standard motors used are foot or pad mounted.
- For normal duty, the motors are of squirrel cage, induction motors to suit virtually any application.
- They are fitted with ball or roller bearings which are fully enclosed and sealed-for life and therefore do not require maintenance.
- Motors are generally wound for 380V/3ph/50Hz or 220V/1ph/50Hz.
- Insulation to Class E with Class B temperature rise is used throughout, allowing for operation in ambient up to +40°C.

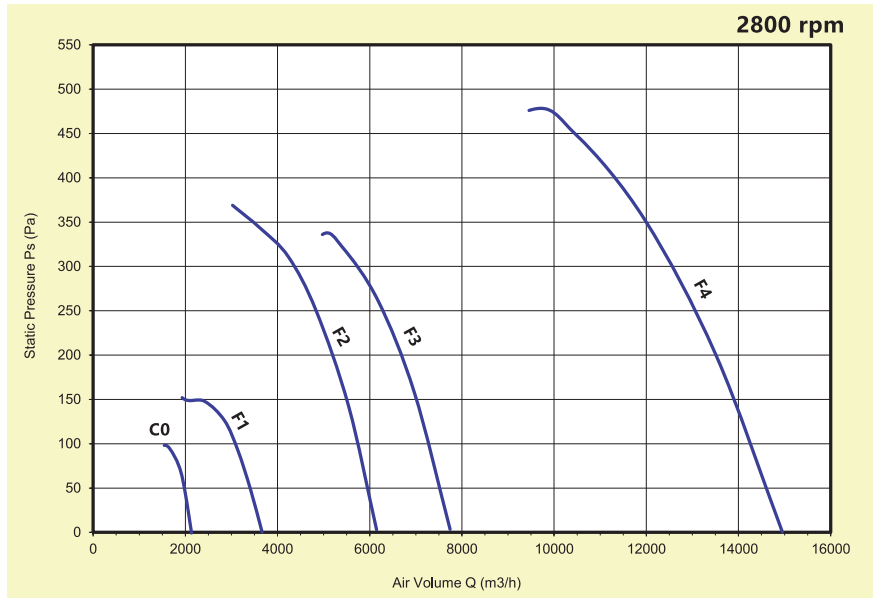
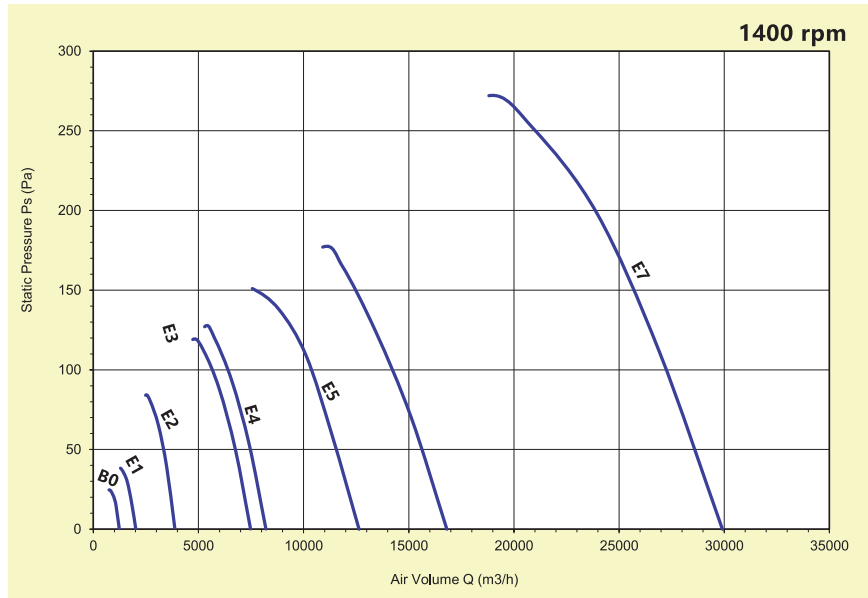
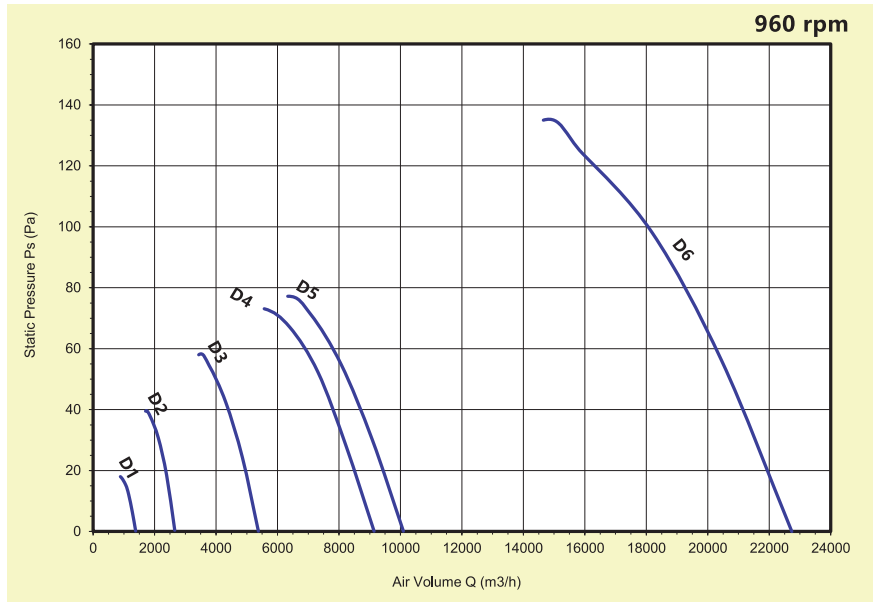
D. DIRECTION OF AIRFLOW

- The standard direction of air flow is Form B, BD and BU. However, Form A, AD and AU can be supplied if required. Motors operating at BD, DU, AD and AU require up thrust bearing. Please inform us in advance if the fans are installed vertically.



Performance for Form A airflow direction are not licensed by AMCA International

FAN PERFORMANCE CURVES FOR STANDARD AXB MODELS



* Performance certified is for installation type D – Ducted inlet, Ducted outlet. Performance ratings do not include the effects of appurtenances (accessories).

SPECIFICATIONS FOR STANDARD **AXB** MODELS

Fan Curve	Standard Model Number	Diameter Inch/mm	Voltage V/Ph/Hz	Motor Power (KW)	Transient Current (A)	Max Motor Speed (RPM)	AirFlow (m ³ /h)	St.Pressure (Pa)	Noise dB (A)
B0	AXB240BFV	9.5" /240	220-240/1/50	65	0.7	1400	810	10	55
C0	AXB240AFV			370	1.8	2800	990	55	71
B0	AXB240FFV		380-415/3/50	70	0.4	1400	810	10	55
C0	AXB240EFV			370	1.0	2800	990	55	71

D1	AXB305CFV	12" /305	220-240/1/50	0.06	1.2	960	1000	15	48
E1	AXB305BFV			0.10	1.4	1400	1500	35	60
F1	AXB305AFV			0.38	4.2	2800	2750	130	78
D1	AXB305GFV		380-415/3/50	0.07	1.0	960	1000	15	48
E1	AXB305FFV			0.135	1.2	1400	1500	35	60
F1	AXB305EFV			0.44	3.6	2800	2750	130	78

D2	AXB380CFV	15" /380	220-240/1/50	0.10	1.4	960	2000	35	54
E2	AXB380BFV			0.23	3.4	1400	2900	74	63
F2	AXB380AFV			0.70	7.5	2800	4800	260	84
D2	AXB380GFV		380-415/3/50	0.09	0.9	960	2000	35	54
E2	AXB380FFV			0.27	2.2	1400	2900	74	63
F3	AXB380EFV			1.25	7.5	2800	6400	230	85

D3	AXB480CFV	19" /480	220-240/1/50	0.18	2.5	960	4000	50	57
E3	AXB480BFV			0.55	6.5	1400	5500	90	65
D3	AXB480GFV		380-415/3/50	0.18	1.5	960	4000	50	57
E4	AXB480FFV			0.55	4.5	1400	5750	95	66
F4	AXB480EFV			3.0	15.0	2800	12000	350	83

D5	AXB610CFV	24" /610	220-240/1/50	0.5	6.0	960	8400	48	61
E5	AXB610BFV			0.8	9.0	1400	10000	101	68
D4	AXB610GFV		380-415/3/50	0.25	2.0	960	7000	57	60
E6	AXB610FFV			1.65	11.0	1400	13000	140	72

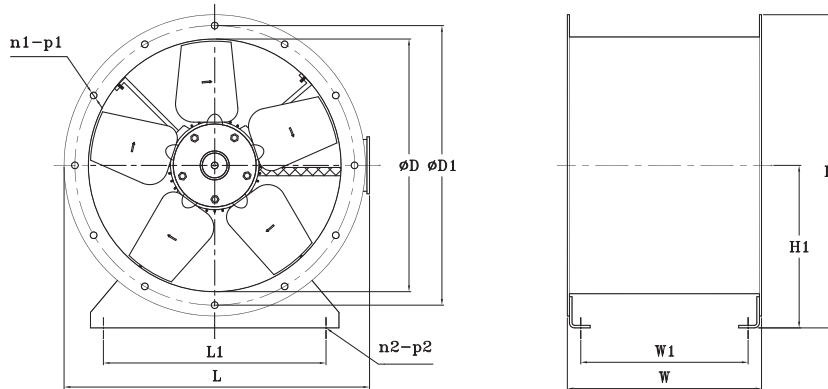
D6	AXB760GFV	30" /760	380-415/3/50	2.2	14.0	960	17000	112	65
E7	AXB760FFV			4.0	22.0	1400	23000	212	71

* Performance certified is for installation type D – Ducted inlet, Ducted outlet. Performance ratings do not include the effects of appurtenances (accessories).

* The A-weighted sound ratings shown have been calculated per AMCA International Standard 301. Values shown are for LwA sound power levels for installation type D: ducted inlet, ducted outlet. Ratings include the effects of duct end correction.

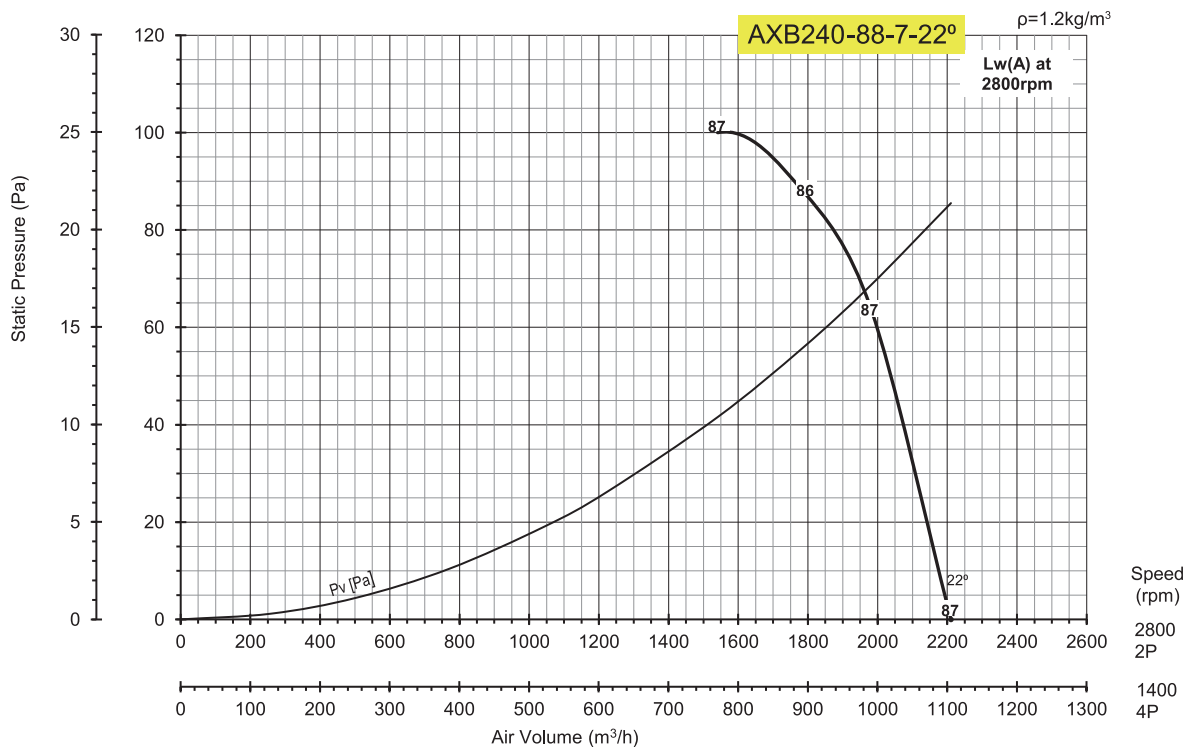
Dimensions

(mm)



Model	øD	øD1	L	L1	W	W1	H	H1	n1-p1	n2-p2
AXB240	240	280	305	205	230	180	325	172	6-φ 10	4-φ 10
AXB305	312	355	408	260	290	237	408	210	8-φ 10	4-φ 10
AXB380	385	432	482	340	335	280	485	246	8-φ 10	4-φ 13
AXB480	488	540	593	430	375	313	605	316	12-φ 14	4-φ 13
AXB610	614	665	730	560	430	372	733	374	12-φ 14	4-φ 13
AXB760	768	830	910	--	550	--	875	473	12-φ 14	--

AXB SERIES AXIAL FLOW FAN



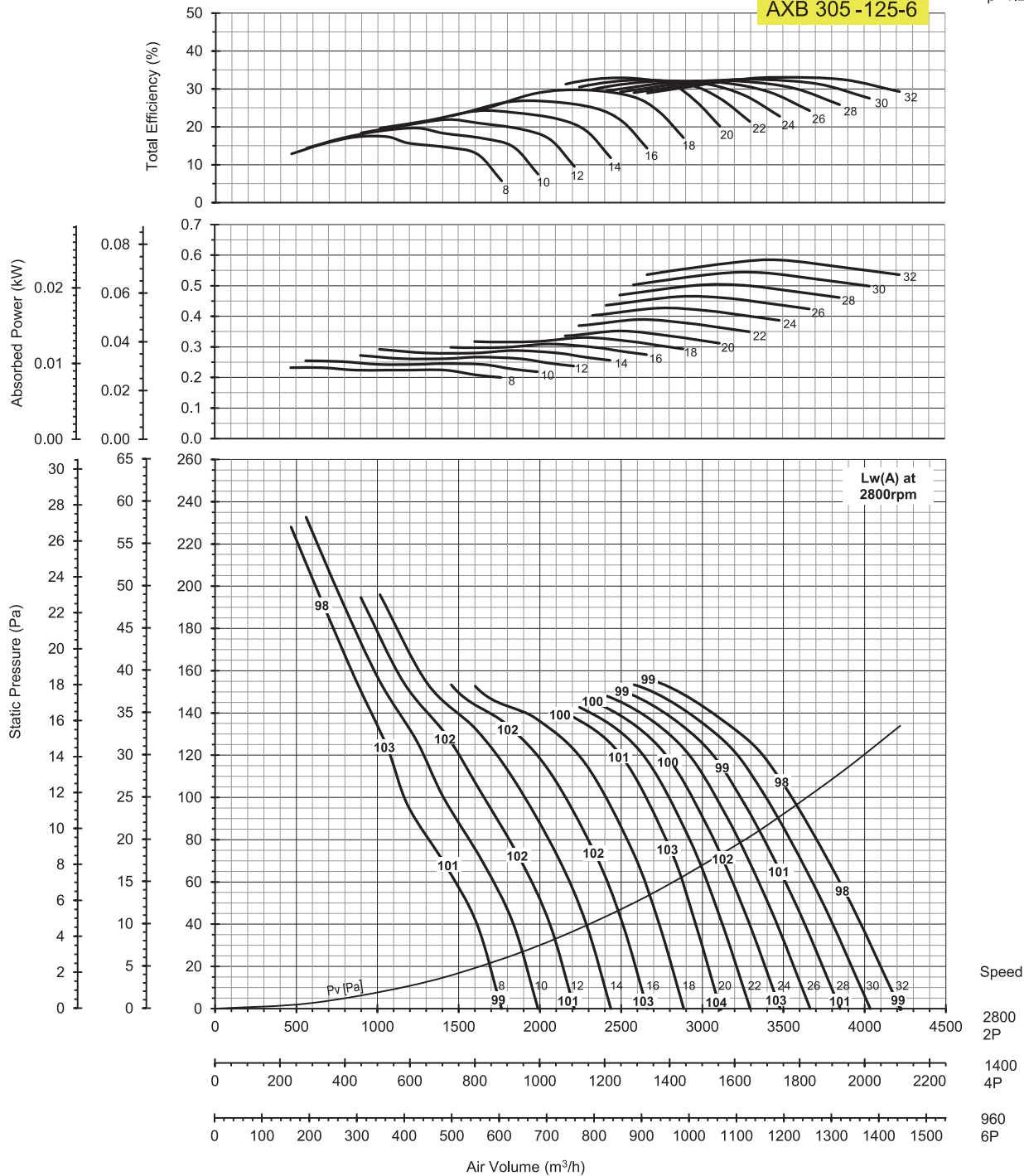
Model No	Speed(RPM)	Blade Angle	Motor(Kw)	Peak Absorbed Power(Kw)	LwA dB(A)
AXB240-88-7-22	1400	22	0.07	0.036	-19
	2800		0.37	0.288	0

- * Performance certified is for installation type D-Ducted inlet, Ducted outlet. Performance ratings do not include the effects of appurtenances (accessories).
- * The A-weighted sound ratings shown have been calculated per AMCA International Standard 301. Values shown are for LwA sound power levels for installation type D: ducted inlet, ducted outlet. Ratings include the effects of duct end correction.

AXB SERIES AXIAL FLOW FAN

$\rho=1.2\text{kg/m}^3$

AXB 305-125-6



At 960 RPM			
Model No	Blade Angle	Motor (Kw)	Peak Absorbed Power (Kw)
AXB305GFV	8	0.18	0.008
	10		0.008
	12		0.009
	14		0.01
	16		0.01
	18		0.011
	20		0.012
	22		0.013
	24		0.014
	26		0.015
	28		0.017
	30		0.018
32	0.019		
LwA dB(A)	-30		

At 1400 RPM			
Model No	Blade Angle	Motor (Kw)	Peak Absorbed Power (Kw)
AXB305FFV	8	0.18	0.029
	10		0.032
	12		0.034
	14		0.037
	16		0.039
	18		0.042
	20		0.044
	22		0.049
	24		0.053
	26		0.058
	28		0.063
	30		0.068
32	0.073		
LwA dB(A)	-18		

At 2800 RPM			
Model No	Blade Angle	Motor (Kw)	Peak Absorbed Power (Kw)
AXB305EFV-0.37	8	0.37	0.232
	10		0.256
	12		0.272
	14		0.292
	16		0.309
	18		0.336
AXB305EFV-0.55	20	0.55	0.352
	22		0.389
	24		0.427
	26		0.464
AXB305EFV-0.75	28	0.75	0.501
	30		0.543
32	0.584		
LwA dB(A)	0		

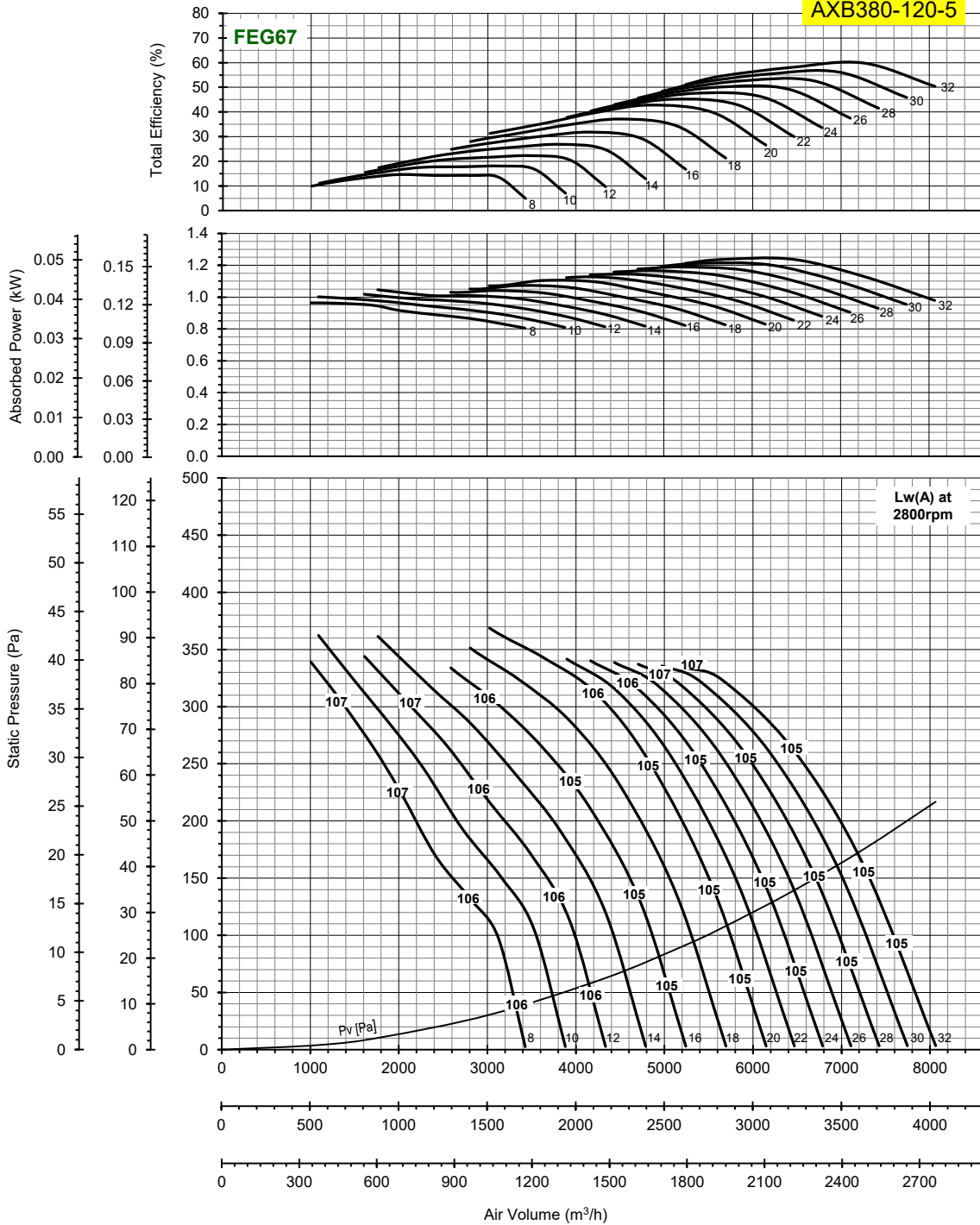
* Performance certified is for installation type D—Ducted inlet, Ducted outlet. Performance ratings do not include the effects of appurtenances (accessories).

* The A-weighted sound ratings shown have been calculated per AMCA International Standard 301. Values shown are for Lw(A) sound power levels for installation type D: ducted inlet, ducted outlet. Ratings include the effects of duct end correction.

AXB SERIES AXIAL FLOW FAN

$\rho=1.2\text{kg/m}^3$

AXB380-120-5



Speed
2800
2P
1400
4P
960
6P

At 960 RPM			
Model No	Blade Angle	Motor (Kw)	Peak Absorbed Power (Kw)
AXB380GFV	8	0.18	0.039
	10		0.04
	12		0.041
	14		0.042
	16		0.042
	18		0.043
	20		0.044
	22		0.045
	24		0.046
	26		0.047
	28		0.048
	30		0.049
32	0.05		
LwA dB(A)	-31		

At 1400 RPM			
Model No	Blade Angle	Motor (Kw)	Peak Absorbed Power (Kw)
AXB380FFV	8	0.18	0.121
	10		0.125
	12		0.127
	14		0.131
	16		0.131
	18		0.134
	20		0.138
	22		0.14
	24		0.143
	26		0.146
	28		0.149
	30		0.152
32	0.155		
LwA dB(A)	-21		

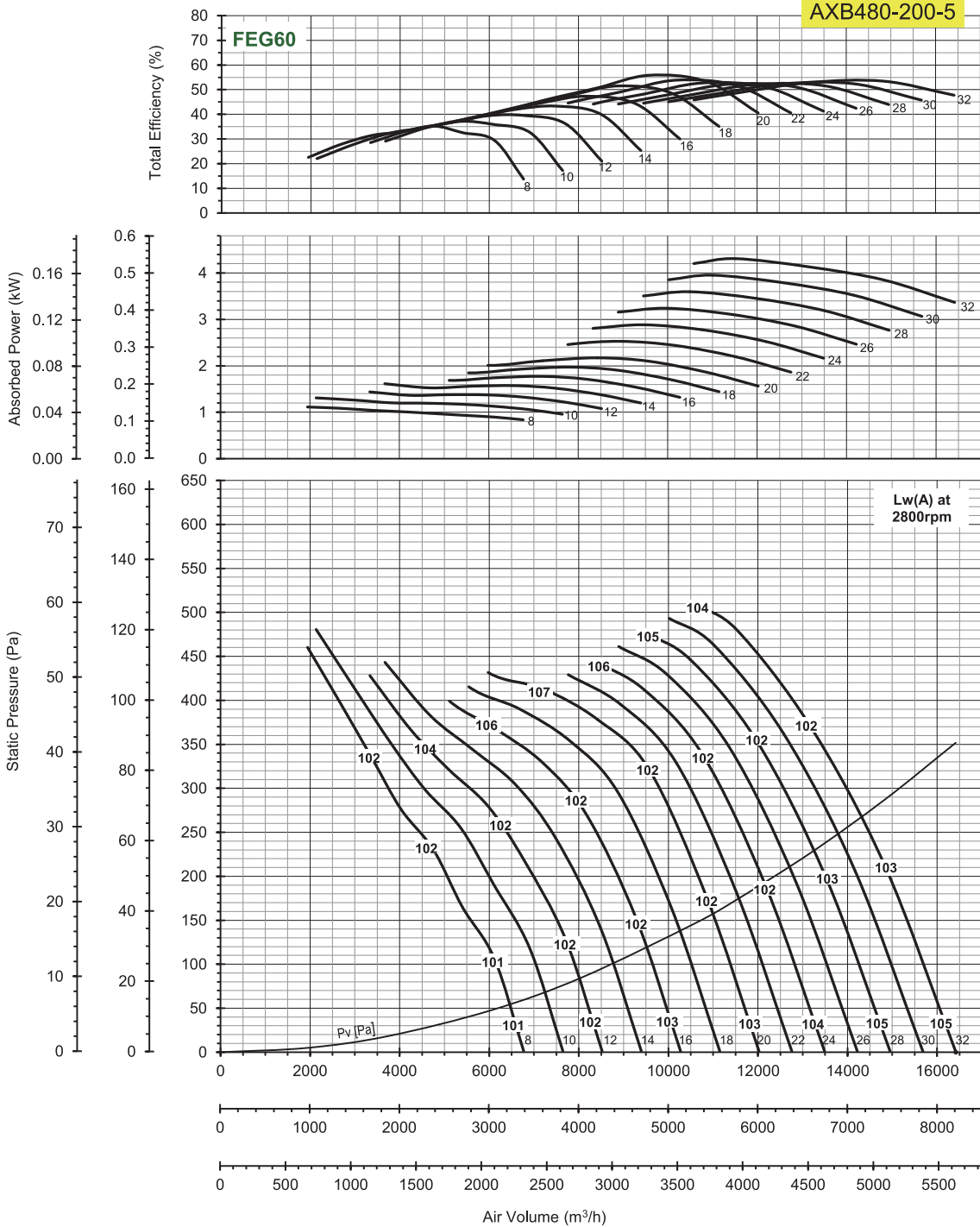
At 2800 RPM			
Model No	Blade Angle	Motor (Kw)	Peak Absorbed Power (Kw)
AXB380EFV-1.1	8	1.1	0.984
	10		1.002
	12		1.018
	14		1.046
	16		1.048
	18		1.073
AXB380EFV-1.5	20	1.5	1.104
	22		1.122
	24		1.142
	26		1.166
	28		1.189
	30		1.212
32	1.236		
LwA dB(A)	0		

* Performance certified is for installation type D—Ducted inlet, Ducted outlet. Performance ratings do not include the effects of appurtenances (accessories).
 * The A-weighted sound ratings shown have been calculated per AMCA International Standard 301. Values shown are for LwiA sound power levels for installation type D: ducted inlet, ducted outlet. Ratings include the effects of duct end correction.

AXB SERIES AXIAL FLOW FAN

AXB480-200-5

$\rho=1.2\text{kg/m}^3$



At 960 RPM			
Model No	Blade Angle	Motor (Kw)	Peak Absorbed Power (Kw)
AXB480GFV	8	0.18	0.045
	10		0.053
	12		0.058
	14		0.065
	16		0.071
	18		0.079
	20		0.087
	22		0.102
	24		0.116
	26		0.131
	28		0.145
	30		0.159
32	0.174		
LwA dB(A)	-27		

At 1400 RPM			
Model No	Blade Angle	Motor (Kw)	Peak Absorbed Power (Kw)
AXB480FFV-0.18	8	0.18	0.139
	10		0.164
	12		0.18
	14		0.202
AXB480FFV-0.37	16	0.37	0.222
	18		0.247
	20		0.271
	22		0.316
	24		0.36
	26		0.405
AXB480FFV-0.55	28	0.55	0.45
	30		0.494
	32		0.539
	LwA dB(A)		-17

At 2800 RPM			
Model No	Blade Angle	Motor (Kw)	Peak Absorbed Power (Kw)
AXB480EFV-1.5	8	1.5	1.114
	10		1.309
	12		1.438
AXB480EFV-2.2	14	2.2	1.614
	16		1.772
	18		1.972
	20		2.171
AXB480EFV-3	22	3	2.527
	24		2.883
AXB480EFV-4	26	4	3.24
	28		3.596
	30		3.952
AXB480EFV-5.5	32	5.5	4.308
LwA dB(A)	0		

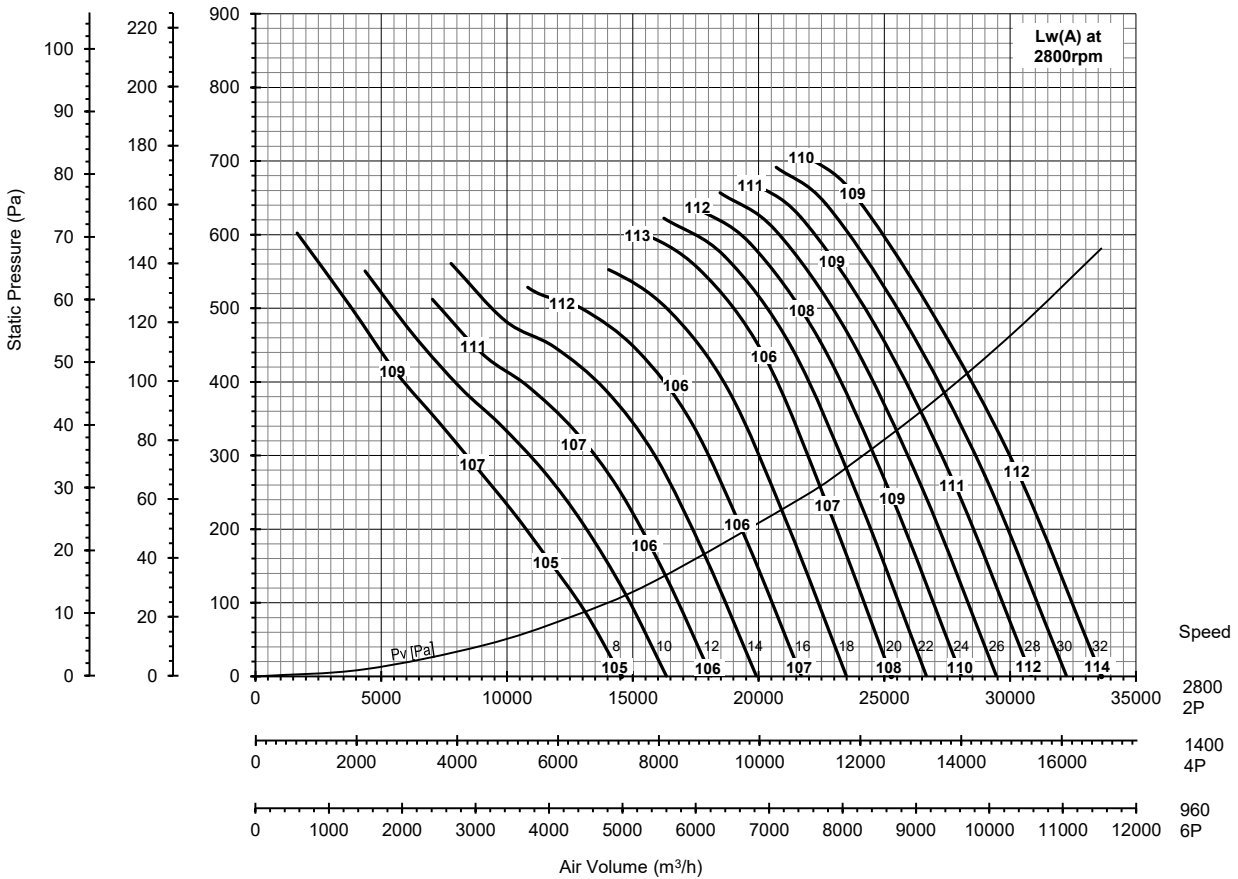
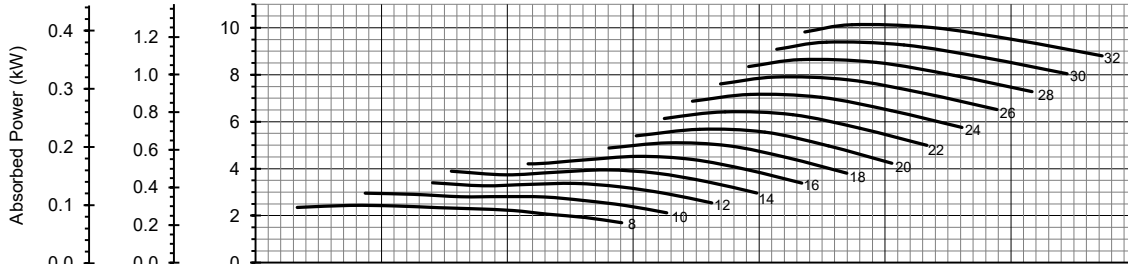
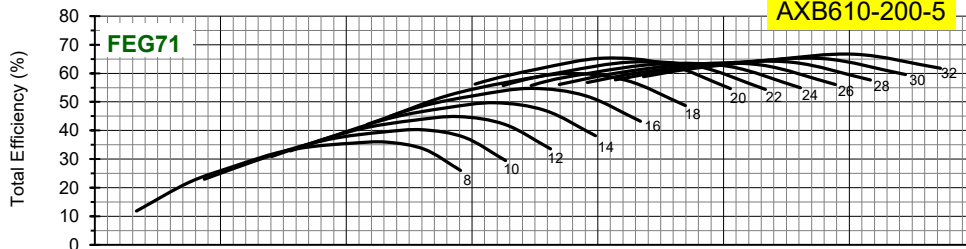
* Performance certified is for installation type D—Ducted inlet, Ducted outlet. Performance ratings do not include the effects of appurtenances (accessories).

* The A-weighted sound ratings shown have been calculated per AMCA International Standard 301. Values shown are for LwiA sound power levels for installation type D: ducted inlet, ducted outlet. Ratings include the effects of duct end correction.

AXB SERIES AXIAL FLOW FAN

AXB610-200-5

$\rho=1.2\text{kg/m}^3$



At 960 RPM			
Model No	Blade Angle	Motor (Kw)	Peak Absorbed Power (Kw)
AXB610GFV-0.18	8	0.18	0.098
	10		0.119
	12		0.137
	14		0.159
AXB610GFV-0.37	16	0.37	0.182
	18		0.206
	20		0.229
	22		0.259
	24		0.289
	26		0.318
AXB610GFV-0.55	28	0.55	0.348
	30		0.378
	32		0.408
	LwA dB(A)		-28

At 1400 RPM			
Model No	Blade Angle	Motor (Kw)	Peak Absorbed Power (Kw)
AXB610FFV-0.37	8	0.37	0.304
	10		0.369
	12		0.425
	14		0.493
AXB610FFV-0.75	16	0.75	0.565
	18		0.637
	20		0.709
	22		0.802
AXB610FFV-1.1	24	1.1	0.895
	26		0.988
	28		1.081
	30		1.173
AXB610FFV-1.5	32	1.5	1.266
	LwA dB(A)		-18

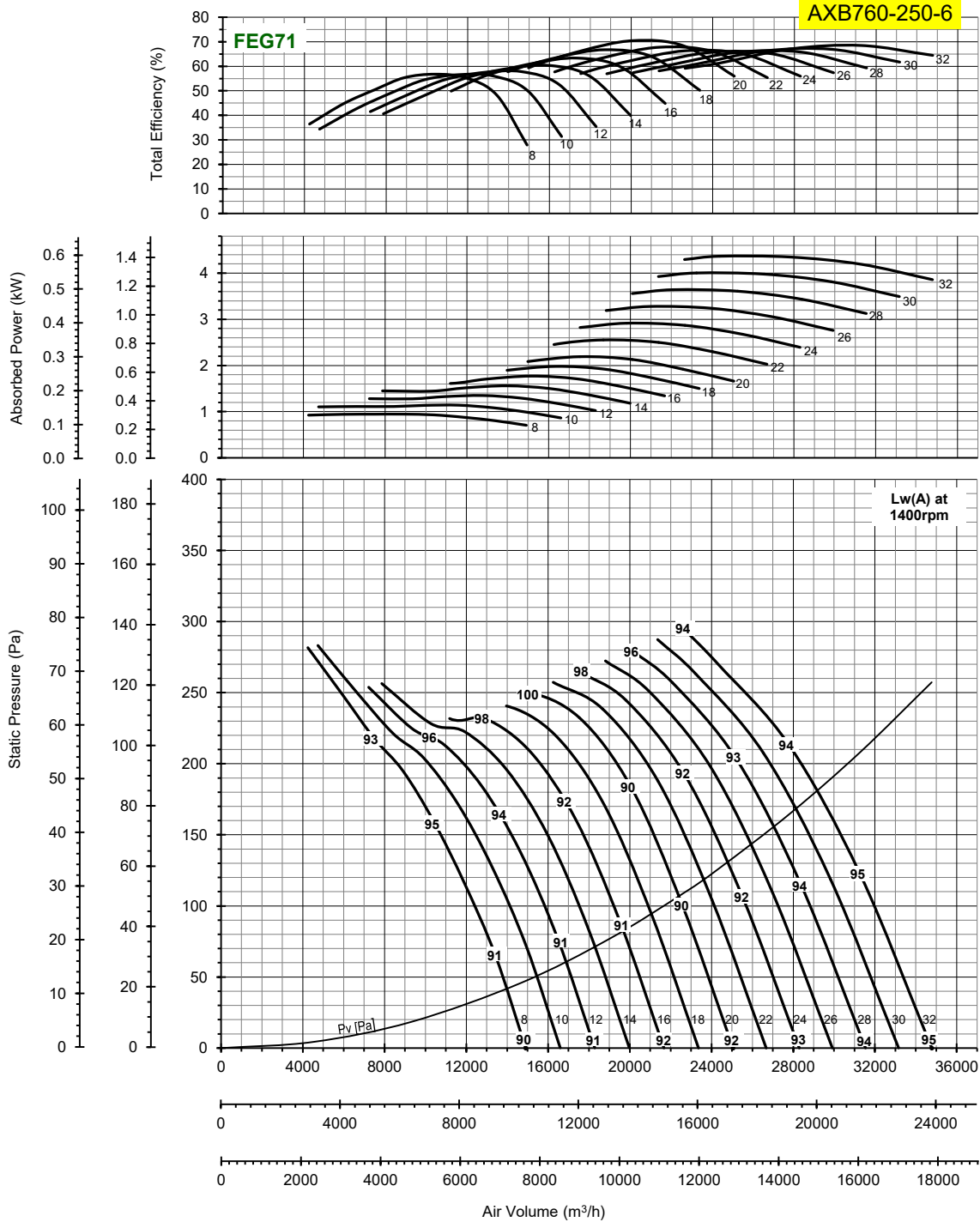
At 2800 RPM				
Model No	Blade Angle	Motor (Kw)	Peak Absorbed Power (Kw)	
AXB610EFV-3	8	3	2.434	
	10		2.955	
	12		3.398	
	14		3.946	
AXB610EFV-4	16	4	4.523	
	18		5.099	
	20		5.675	
	22		6.417	
AXB610EFV-5.5	24	5.5	7.16	
	26		7.902	
	28		8.644	
	30		9.387	
AXB610EFV-11	32	11	10.129	
	LwA dB(A)		0	

* Performance certified is for installation type D—Ducted inlet, Ducted outlet. Performance ratings do not include the effects of appurtenances (accessories).

* The A-weighted sound ratings shown have been calculated per AMCA International Standard 301. Values shown are for LwA sound power levels for installation type D: ducted inlet, ducted outlet. Ratings include the effects of duct end correction.

AXB SERIES AXIAL FLOW FAN

$\rho=1.2\text{kg/m}^3$



At 960 RPM			
Model No	Blade Angle	Motor (Kw)	Peak Absorbed Power (Kw)
AXB760GFV-0.37	8	0.37	0.305
	10		0.367
	12		0.435
AXB760GFV-0.55	14	0.55	0.503
	16		0.571
	18		0.638
AXB760GFV-0.75	20	0.75	0.706
	22		0.823
	24		0.94
AXB760GFV-1.1	26	1.1	1.057
	28		1.174
	30		1.291
AXB760GFV-1.5	32	1.5	1.407
LwA dB(A)	-9		

At 1400 RPM			
Model No	Blade Angle	Motor (Kw)	Peak Absorbed Power (Kw)
AXB760FFV-1.1	8	1.1	0.946
	10		1.139
	12		1.349
AXB760FFV-1.5	14	1.5	1.56
	16		1.77
	18		1.98
AXB760FFV-2.2	20	2.2	2.19
	22		2.553
	24		2.915
AXB760FFV-3	26	3	3.278
	28		3.64
	30		4.003
AXB760FFV-5.5	32	5.5	4.365
LwA dB(A)	0		

* Performance certified is for installation type D –Ducted inlet, Ducted outlet. Performance ratings do not include the effects of appurtenances (accessories).

* The A-weighted sound ratings shown have been calculated per AMCA International Standard 301. Values shown are for LwA sound power levels for installation type D: ducted inlet, ducted outlet. Ratings include the effects of duct end correction.



WING TON FAN INDUSTRY LIMITED



Address: 1B KAM SHING IND BLDG,1-11 KWAI WING RD.KOWLOON,HONG KONG.

Tel: (852) 2410 9038 Fax: (852) 2487 7317

E-mail: edwin@wington.hk <http://www.wington.com>