

本公司保留更改样本的权利，恕不另行通知。
INFINAIR reserves the right to make changes to this
catalogue in whole or in part without prior notice.

INFINAIR® 英飞

ISQ

离心式管道风机

Inline Square Centrifugal Fan

- “翔欣”系列第四代后倾离心叶轮
- 方形外壳设计，叶轮无蜗壳，安装简便
- 无需使用消音器的高静压风机
- 管道送排风、防爆送排风、消防排烟



INFINAIR® 英飞

上海诺地乐通用设备制造有限公司
INFINAIR CORPORATION

地址：上海市嘉定区外冈镇清能路55号
Add: NO. 55 Qingneg Road, Waigang Town,
Jiading District, Shanghai
邮编PC：201806
电话TEL：86 21 39185688
售后服务电话：400 821 3316
Http: //www.infinair.com.cn



公司介绍

秉承绿色环保与智能互联的未来发展理念，英飞风机始终坚持在通风领域，坚持不懈投入研发，并以“可靠便利，环保节能，智能互联”作为我们试图为您创造的核心价值。

成立时间：2003年9月
占地面积：33,000 m²
地址：上海市嘉定区清能路55号

服务网络：

公司的营销和服务网络覆盖全国，包括上海、北京、深圳、吉林、辽宁、天津、山西、河南、陕西、山东、江苏、安徽、浙江、福建、重庆、四川、湖南、湖北、广东、广西、海南、贵州、新疆等地区，为客户提供及时的技术支持和可靠的售后服务。

公司愿景：

成为最值得信任的专业空气运动与控制、调节品牌

公司使命：

提供最可靠、便利的空气运动与控制、调节服务

荣誉资质：

高新技术企业
上海著名商标：**INFINAIR®英飞**
上海名牌产品：英飞风机
SGS ISO 9001、ISO 14001、OHSAS 18001管理体系认证

技术实力：

英飞空气动力实验室，荣获CNAS（中国合格评定国家认可委员会）国家实验室认可
中国大陆首家荣获AMCA（国际空气运动与控制协会）认可的实验室
众多产品具备国际AMCA认证、TUV认证、CE认证，国家防爆及消防认证等



上海诺地乐通用设备制造有限公司特此证明：此处所示的ISQ系列产品获得了加盖AMCA印章的授权。所示额定值系根据AMCA出版物211和AMCA出版物311进行测试和程序确定，并符合AMCA认证额定值计划的要求。

INFINAIR CORPORATION certifies that the Model ISQ shown herein is licensed to bear the AMCA Seal. The ratings shown are based on tests and procedures performed in accordance with AMCA Publication 211 and AMCA Publication 311 and comply with the requirements of the AMCA Certified Ratings Program.

Company Info

INFINAIR is committed to providing high-quality products and friendly services to our customers throughout the world. We strive to consistently meet or exceed our quality standards in the design, manufacturing and distribution of products to our customers. We are also determined to be different in caring our environment through innovative ideas.

Established: September, 2003
Area : 33,000m²
Company Address: 55 Qingneng Road, Jiading District, Shanghai, China PRC.

Sales & Service Office:

Our sales and after-sale service networks promise easy access to customers anywhere in China. They are located in various locations:
Shanghai, Beijing, Shenzhen, Jilin, Liaoning, Tianjin, Shanxi, Henan, Shaanxi, Shandong, Jiangsu, Anhui, Zhejiang, Fujian, Chongqing, Sichuan, Hunan, Hubei, Guangdong, Guangxi, Hainan, Guizhou and XinJiang.

Company Vision:

To be the most trusted brand in ventilation industry.

Company Mission:

Provide reliable, convenient air movement controls, operations and services.

Awards and Achievements:

High-tech Enterprise
Renowned Shanghai trademark: **INFINAIR®英飞**
Shanghai Famous Brand Product : INFINAIR FAN
SGS ISO 9001, ISO 14001 and OHSAS 18001 Management Certificates

Technological Strength:

INFINAIR's Air Movement & Sound Laboratory is the first Air Movement and Control Association (AMCA) accredited laboratory in the mainland of China.
It is also certified by Chinese National Accreditation Service for Conformity Assessment (CNAS).
Most of the INFINAIR's products are tested and certified by many international certification bodies such as AMCA, TUV , CE, CCC, CNEX, etc.



中国合格评定国家认可委员会(CNAS)
国家实验室认可证书



Certificate Issued by Chinese National
Accreditation Service for Conformity
Assessment (CNAS)



AMCA（国际空气运动与控制协会）
实验室认可证书
Certificate of AMCA (Air Movement and
Control Association) Accredited Laboratory

英飞智能通风技术

- **智能需求感知**：随荷载变动、环境变化动态确定运行目标。
- **智能工况调整**：变频或EC智能控制技术在智能调速软件的动态控制下，性能紧密贴近真实需求。
- **智能实时通讯**：通过多种通讯技术，链接互联网或局域网，实现与中控系统及移动终端的智能通讯。
- **智能预警**：可靠的传感器提供了故障的早期征兆，实现智能预警，保证系统稳定运行。

飞鹰服务

- **联合研发**：通过与客户共同开发，以及质量的先期策划，来快速提供真正有效的解决方案。
- **配套定制**：我们的定制服务通过渐进明晰的过程，帮助您找到精确的需求。
- **敏捷服务**：遍布全国的英飞售后服务工程师，敏捷提供专业服务。

绿色智能环保技术

- **流场模拟分析技术**：
对叶轮气动模型的性能（风量，风压，功耗，噪音）预测提供模拟计算，不必制作样机而预知性能，快速优化。
- **有限元分析技术**：
针对受力和材料特性进行结构可靠性分析。

英飞仿生技术

- **英飞节能仿生**
鸚鵡螺为什么可以轻松浮动和游走？鸟类是如何以极低的能耗翱翔千里？
- **英飞降噪仿生**
猫头鹰的静音飞行，为什么敏感的老鼠也毫无察觉？
自然界生物在千万年进化过程中，如何节约能量进行迁徙，或者在抓捕猎物的时候做到悄无声息？
仿生技术对于英飞风机的研发，提供了重要的灵感。

英飞智能制造技术

- 智能化生产流水线
- 在线测功、动平衡和通讯检测
- 机器人焊接工艺
- 敏捷的精益生产
- 6Σ体系

认证及检测

- **产品普遍通过国内外认证**：
CCCf, TUV, CE, ATEX, UL, RoHS, ErP2015等。
- **产品性能及可靠性检测**：
风量，风压，功率，噪音，
高低温耐久，盐雾，淋雨等。

物联

- 矩阵互联
- 中控互联
- 终端互联



INFINAIR's Intelligent Ventilation Technology

- **Smart Needs Identification**:
It can dynamically adjust the operation target to the changing load and environment.
- **Intelligent Adjustment** :
The use of inverter or EC smart control technology can make the fans achieve best results under the control of the intelligent speed regulation system.
- **Intelligent Real-time Information**:
Individual workstations are linked to the central control system through internet or local area network.
- **Intelligent Detection System**:
Reliable sensors can detect early symptoms and notify the user, ensuring stable operation.

INFINAIR's After-sales Service

- **Joint Research & Develop**
The Joint R&D can provide customer the necessary support and guidance during the initial research progress.
- **Customization**
Our products are fully customizable. We are able to satisfy customer requirements on an individual basis.

Green Smart Technology

- **CFD Simulation & Analysis**
A computer-aided air movement simulation model can calculate the efficiency of the fan based on the number of blades, blade angle, width, and sound level.
- **Finite Element Analysis Technology**
To analyze and provide accurate prediction of how material is likely to respond when subjected to structural and/or thermal loads.

INFINAIR's Bionic Technology

- **INFINAIR's Bionic Energy Conservation**
We develop energy saving products by observing behaviors from the animal kingdom. How can birds fly thousands of miles with extremely low energy consumption?
- **INFINAIR's Bionic Sound Reduction**
Why Owls can fly so silently? Even mice are not being able to detect their approach?
The research and development of INFINAIR's products are heavily inspired by the animal evolution over the past millenniums. We have learnt how energy and sound are being able to conserve from their amazing changes.

INFINAIR's Intelligent Fabrication

- Intelligent fabrication process
- Power test, dynamic balancing test and communication test performed on the production line
- Robotic welding technology
- Lean production
- 6Σ system

Certifications and Tests

- **Most of the products are certificated by**:
CCCf, TUV, CE, ATEX, UL, RoHS and ErP2015.
- **Performance and Reliability Tests**:
Airflow, Air Pressure, Power, Sound Level, Temperature Durability, Salt Spray and Water Proof Test, etc.

Connectivity

- Matrix Connection
- Central Connection
- Terminal Connection

“翔欣™ ” 第四代叶轮功效 Highlights of the 4th Generation of Wind-Surfer™ wheel

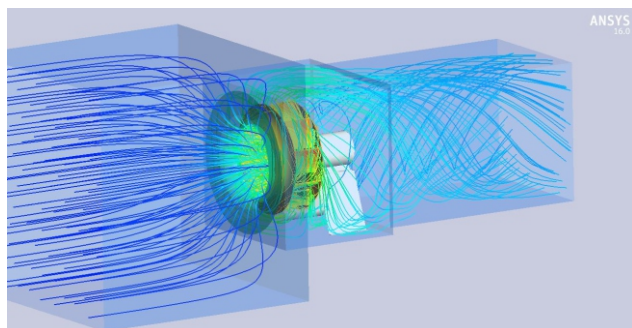
“翔欣™ ” 第四代叶轮

The 4th Generation of Wind-Surfer™ wheel

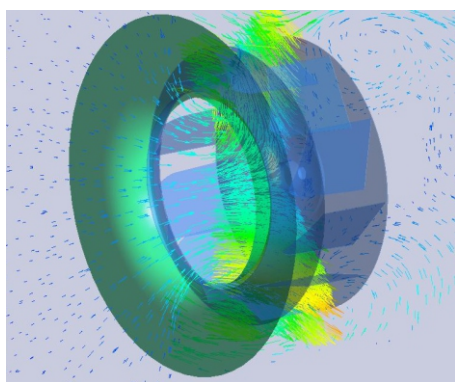
- 优秀的气动特性和声音特性
Excellent sound and air performance
- 高效区宽、不超载
Wide performance range of high efficiency and non-overloading
- 平衡等级高达G2.5（普通产品仅为6.3）
The balance quality grade as high as G2.5 (Just G6.3 for general products)

空气动力性能设计

Air Performance Design



- 采用CFD流场模拟技术优化设计，反复验证
Optimized design through CFD flow field simulation and repeated tests
- 流道控制：精密配合，对气流约束性强
Flow passages control: airflow regulated well through precise synergy
- 前盘与入口文丘里管符合流场特性
Wheel cone and inlet cone in conformity with flow field characteristics
- 叶片安装角度得以优化
Optimized mounting angle for blades



结构性能设计

Structural Design

- 采用FEA进行应力分析，提升性能
Stress analysis by FEA method for better performance
- 根据规格选择不同的加强结构，提升可靠性
Various additional strengthening for different specifications for greater reliability
- 采用铆接技术，无应力产生
Riveting technology used to avoid stress

工艺先进

Advanced Process

- 入口文丘里管和前盘旋压工艺确保流线气动特性
Wheel cone and inlet cone formed by spinning to ensure good air performance
- 入口文丘里管：取代导流圈，确保气流顺畅
Inlet Cone: replacing the inlet bell to ensure smooth airflow
- 叶片：一次冲压成型确保加工品质
Blades: formed by punching to ensure quality
- 工装：专门夹具确保叶片安装定位精确
Tooling: dedicated fixtures to ensure the precise mounting position of blades



产品特点

Product Features

性能范围广同时更经济

Wide Performance Range and More Economical

- 翔欣四代离心叶轮，压力范围广，噪音低于第三代产品
The 4th generation of centrifugal Wind-Surfer™ wheel possessing a wider pressure scope and lower sound compared with the 3rd generation
- 叶轮直径可达1米，减少台数，降低前期投资
The wheel diameter as long as one meter, requiring fewer fans and lower primary investment
- 无需蜗壳，风机体积缩小，方便安装
No scroll needed and the fan size reduced, making installation easier

方形设计多出口方向：节省安装费

Square Design with Different Discharge Direction Options:
Mounting Costs Reduced

- 标配正方形进风口套接法兰：免“天圆地方”的转接头及法兰圈
Square inlet/outlet flanged sleeve: connector and ring flange now not used
- 节省风管连线费用，缩短施工周期
Lower air duct connection costs and faster installation
- 电机可以在不同位置安装
Different mounting positions available for the motor
- 多出口方向：设计施工更加灵活方便
Different discharge positions: ease of design and installation

解决噪音问题的方案：离心管道形式

Sound Solution: Centrifugal Inline Type

- 与轴流 / 混流类的本质区别：转速有效降低20%-30%
Fundamental difference from axial/mixed flow types: speed reduced by 20-30%
- 声压级区间下移10 ~ 15个分贝
Range of sound pressure level down by 10-15 dB(A)
- 从最根本的角度解决了噪音的问题
A fundamental solution to sound

AMCA标签：声音和空气动力性能双认证

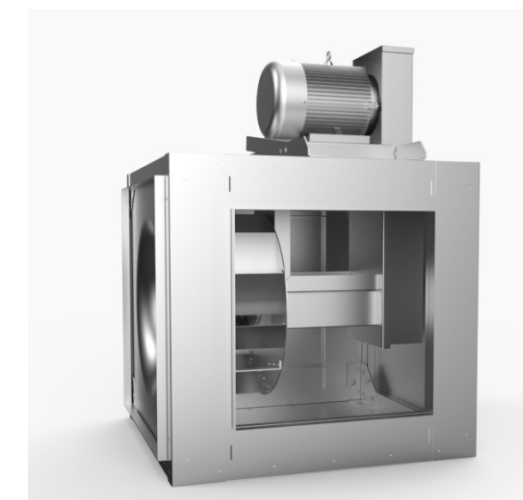
AMCA Seal: for Sound and Air Performance

- ISQ产品性能已经通过AMCA声音和空气动力学认证
ISQ fans certified by AMCA for Sound and Air Performance
- 设备贴有AMCA声音与空气动力性能认证标签
AMCA Seal for Sound and Air Performance tagged on fans

无蜗壳结构

No Scroll

- 空气直接吸入叶轮加压，改善气流组织
Air directly pressurized in wheel and airflow pattern improved
- 直联型不发尘：适用微电子、医药食品工业的洁净室
Direct drive and dust-free: suitable for clean rooms in microelectronics, food and medical industries



可选配件
Optional Accessories

重力式止回风阀
Gravity Backdraft Damper

专业设计的重力式止回风阀含前后接套法兰以及保证叶片正常开启的套箱，独立于风机本体安装。
The professionally designed gravity backdraft damper comprises inlet/outlet flanged sleeves and a box that ensures damper blades start normally. The damper is installed independent of the fan body.

45° 防雨罩（带防鸟网）
45 Degrees Rain Cover (With Bird Screen)

风机室外安装时，能有效防止雨水从进出风口进入风机内部。
When the fan is installed outside, the rain cover can effectively prevent rain infiltration through the inlet or outlet.

电机护罩（仅适用皮带驱动型）
Motor Cover (only for belt drive type)

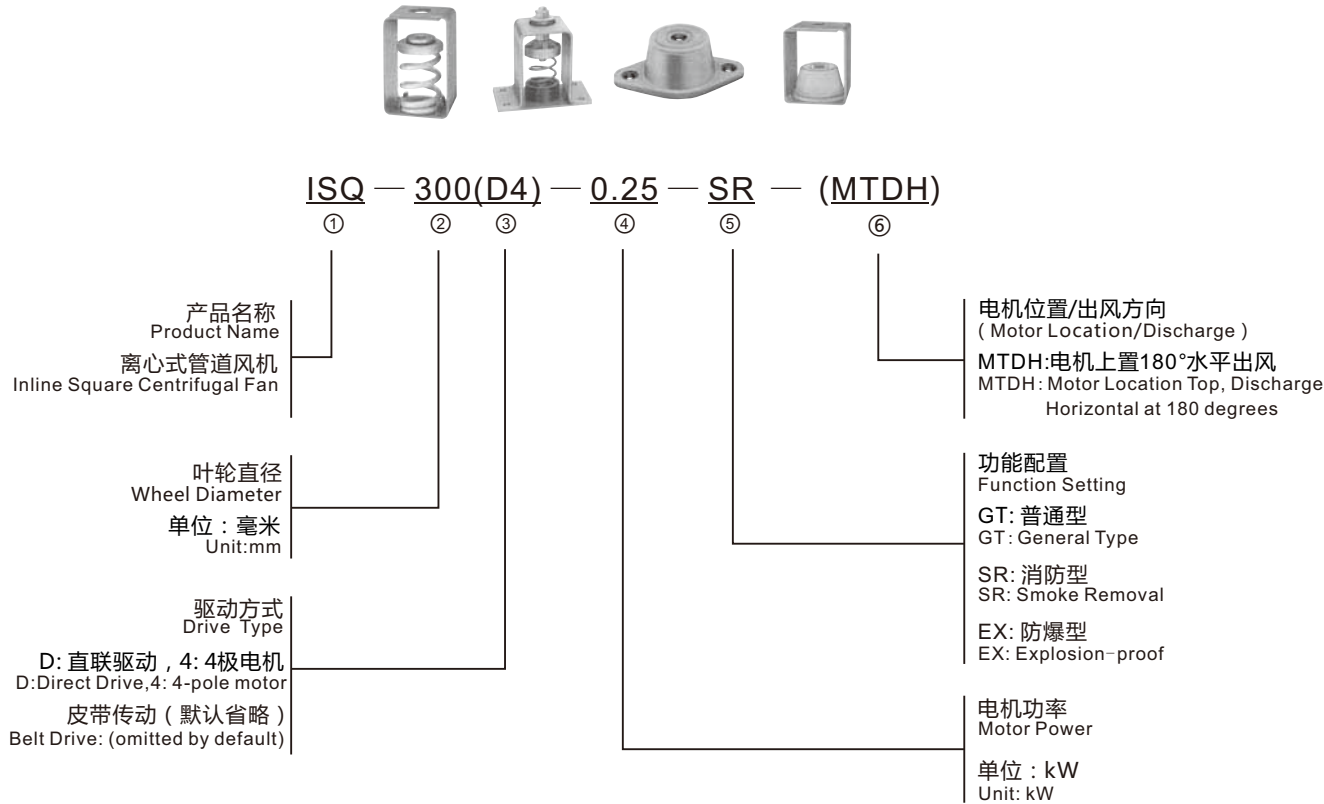
带有通风窗，在保护电机同时及时散发热量，延长电机寿命，并降低电机噪音。
The equipped air window helps to dissipate heat, extend motor life and reduce sound.

消音内衬
Soundproofing Egg Crate Foam Wall Tiles

在风机内壳附加高级消音材料，将风机声压级降低6-8dB(A)。
Premium-grade acoustical materials are placed on the inner shell of the fan, reducing sound pressure level by 6~8 dB(A).

减振器
Vibration Isolators

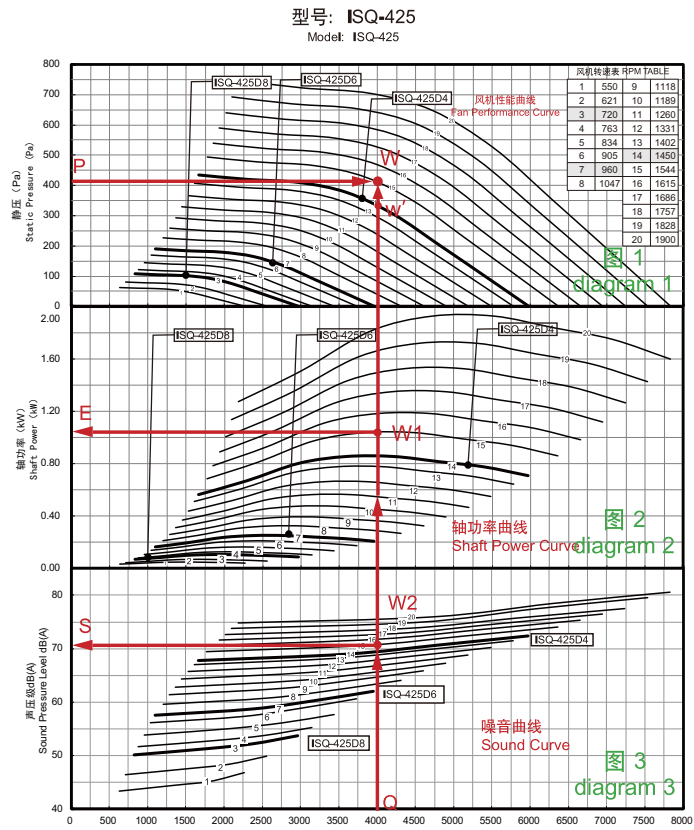
减振器可选择吊装或落地安装型，材料可选丁氰橡胶或弹簧。
Vibration isolators can be hung or floor-mounted. Neoprene or spring isolators are available.



样本说明
Catalog Introduction

- 每个型号风机由一组曲线表示不同转速下的性能。
- 粗曲线代表风机为直联型，即叶轮与电机直接连接（直联机型的型号已经在图中单独用箭头标出）。所有直联型号均应在叶轮直径后加字母D以及电机极数。
- 细曲线代表使用皮带连接，通过选择两个皮带轮不同直径配比来得到所需转速，而电机采用2、4、6极的。
- 轴功率曲线显示风机实际耗用的电能。
- 声压级曲线显示距离风机1.5米的噪音。

- Fans of each model have performances at different speeds described by curves.
- Curves shown in boldface represent fans of direct drive type which means the wheel is directly driven by the motor (models of these fans are shown in arrows). A letter D and the number of motor poles are added to the wheel diameter of all the direct drive fans.
- Curves shown in lightface represent fans of belt drive type. The required wheel RPM is reached through using two pulleys of different diameter ratios. The motor is of two, four and six poles.
- Shaft Power Curve shows the actual power consumption of fans.
- Sound Pressure Level curve shows the sound level 1.5 meters from the fan.



经认证的性能是B类安装：自由入口，管道出口。额定功率包括传输（动）损失。各项性能额定值不包括附属物（附件）的影响。dB(A) 声压级参数基于每个倍频程在1.5米距离处按照11.5dB衰减计算。声压级参数-dB(A)水平未获AMCA International授权。

曲线选型举例：风量：4,000m³/h
全压：450Pa
第一步：自给定的风量(图Q点：4,000m³/h)出发作垂直线，自给定静压点（图P点：450Pa）作水平线，其交点（图W点）即为“工作点”，寻找离该点最近的性能曲线（15号曲线），其转速为1,544转/分钟。如“工作点”离性能曲线较远，请选择其他型号重複“第一步”直到找到比较接近“工作点”的性能曲线。

第二步：该垂直线与相应转速的轴功率曲线的交点（图W1点），自此交点（图W1点）作水平线与轴功率轴相交，其交点（图E点：约为1.01kW，即为实际功耗，代表工作所需的电能，根据功率储备系数(选择1.15)计算所需功率应选择1.5kW电机。

第三步：该垂直线与相应转速的声压级曲线的交点（图W2点），自此交点（图W2点）作水平线与声压级轴相交，其交点（图S点：约为70dB(A)），即为W工作点的噪音。

第四步：根据上述步骤，该型号初步选定为 ISQ-425-1.5，皮带驱动，转速为 1,544RPM。如果希望更低的功率，可参考较大型号的风机进行比较，但初期投资会增加。

第五步：进一步地，如果需求为4,000m³/h、350Pa静压，则容易发现W'点距离14号加粗曲线（代表直联风机，1450RPM，4极电机）很接近，则按照箭头标明的型号为ISQ-425D4配1.1kW电机，其性价比更高。

备注：储备系数由选型人员根据实际需求自己决定，一般取1.15。

Example: Airflow: 4,000m³/h Static Pressure: 450Pa

Step One: A vertical line is drawn from the given air airflow (Point Q: 4,000m³/h) and a horizontal line from the given static pressure (Point P: 450Pa). The intersection point (Point W) is the operating point. Then find a performance curve closest to Point W (in this case, it is curve 16 at 1,544 RPM as shown). If the operating point is far from the performance curve, please choose other models and repeat the same procedure as above until the right performance curve can be found.

Step Two: From the intersection point (Point W1) between the vertical line and Shaft Power Curve is drawn a horizontal line. Its intersection point with the Shaft Power axis (Point E: about 1.01kW) represents the actual power consumption. Based on the coefficient of power reserve (1.15), the required power of 1.5kW is figured out.

Step Three: From the intersection point (Point W2) between the vertical line and Sound Pressure Level curve is drawn a horizontal line. Its intersection point with the Sound Pressure Level axis (Point S: about 70dB (A)) represents the sound level for the operating point of W.

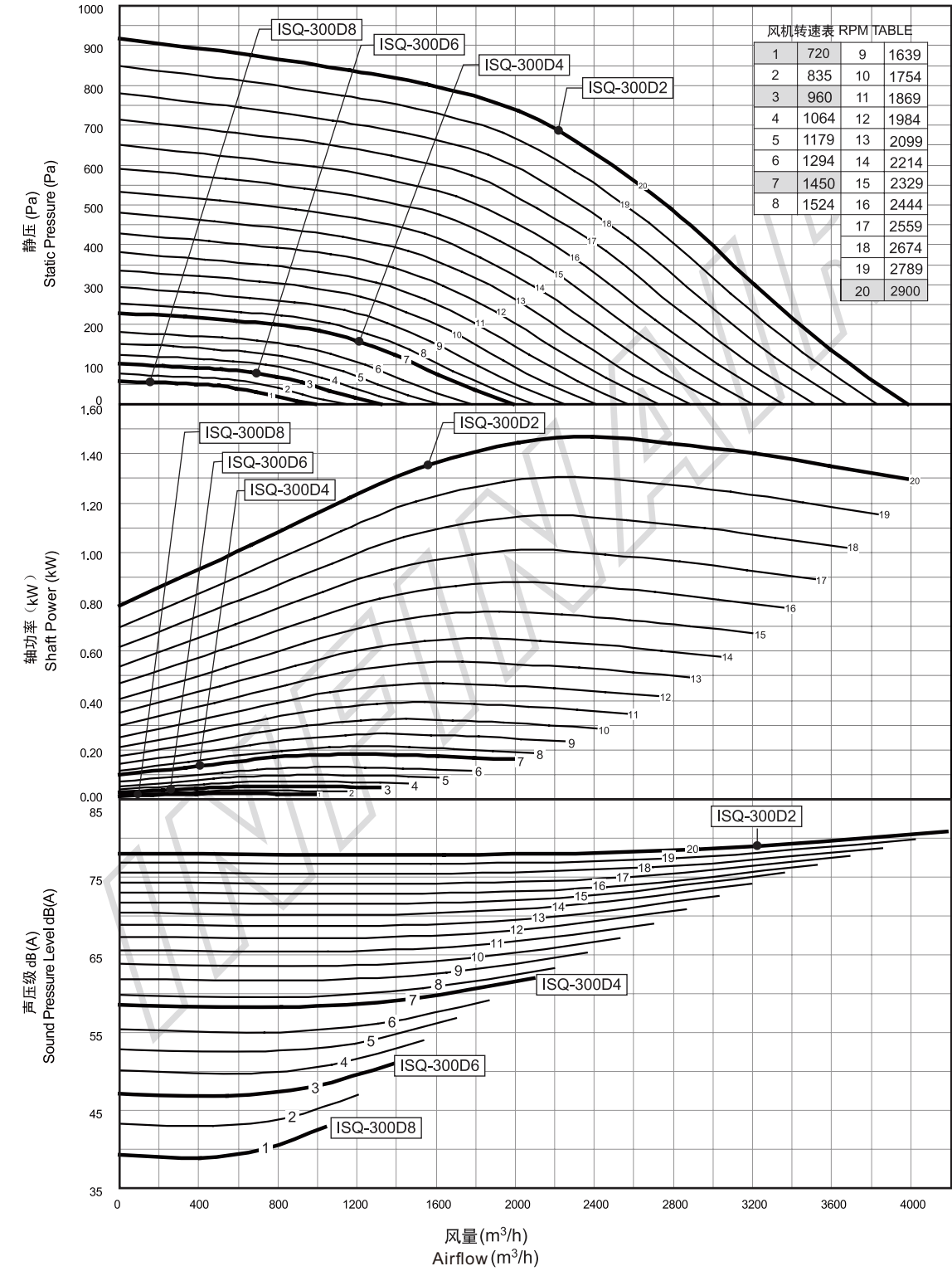
Step Four: From the above steps, the model of the fan is identified as ISQ-425-1.5 of belt drive type at 1,544RPM. If fans of lower shaft power are preferred, please refer to larger fans for further comparison. It should be noted that the primary investments for larger fans would increase.

Step Five: If a fan of 4,000m³/h at 350Pa static pressure is needed, it is easy to know that Point W' is very close to curve 14 shown in boldface (indicating a direct drive fan of 4poles at 1,450RPM). Then as is shown by the arrow, the ISQ-425D4 fan equipped with a 1.1KW motor is finally identified, which is a much more cost-effective choice.

Note: The coefficient of power reserve is determined by model selection staff based on actual needs (typically 1.15).

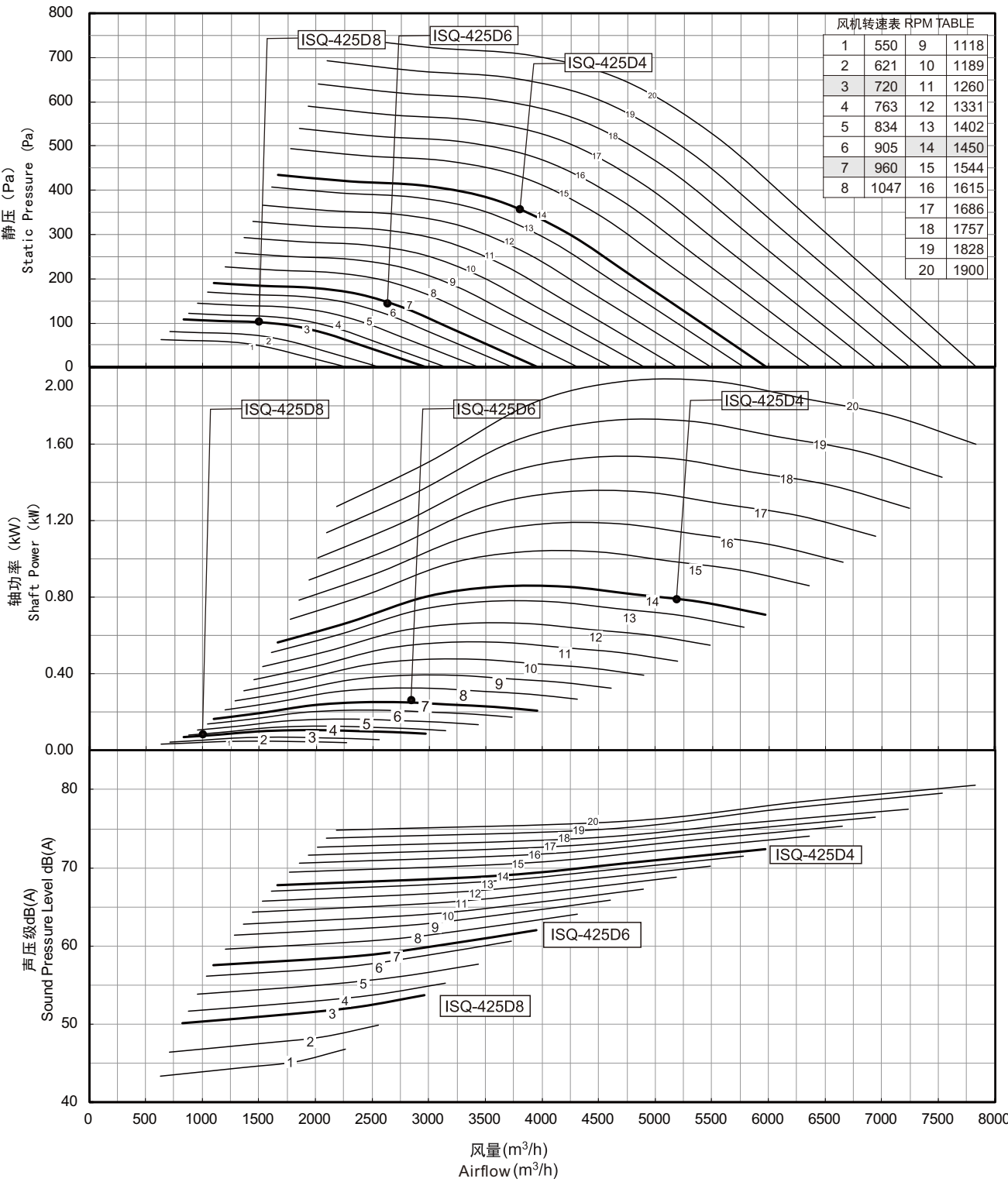
性能曲线
Performance Curve

型号: ISQ-300
Model: ISQ-300



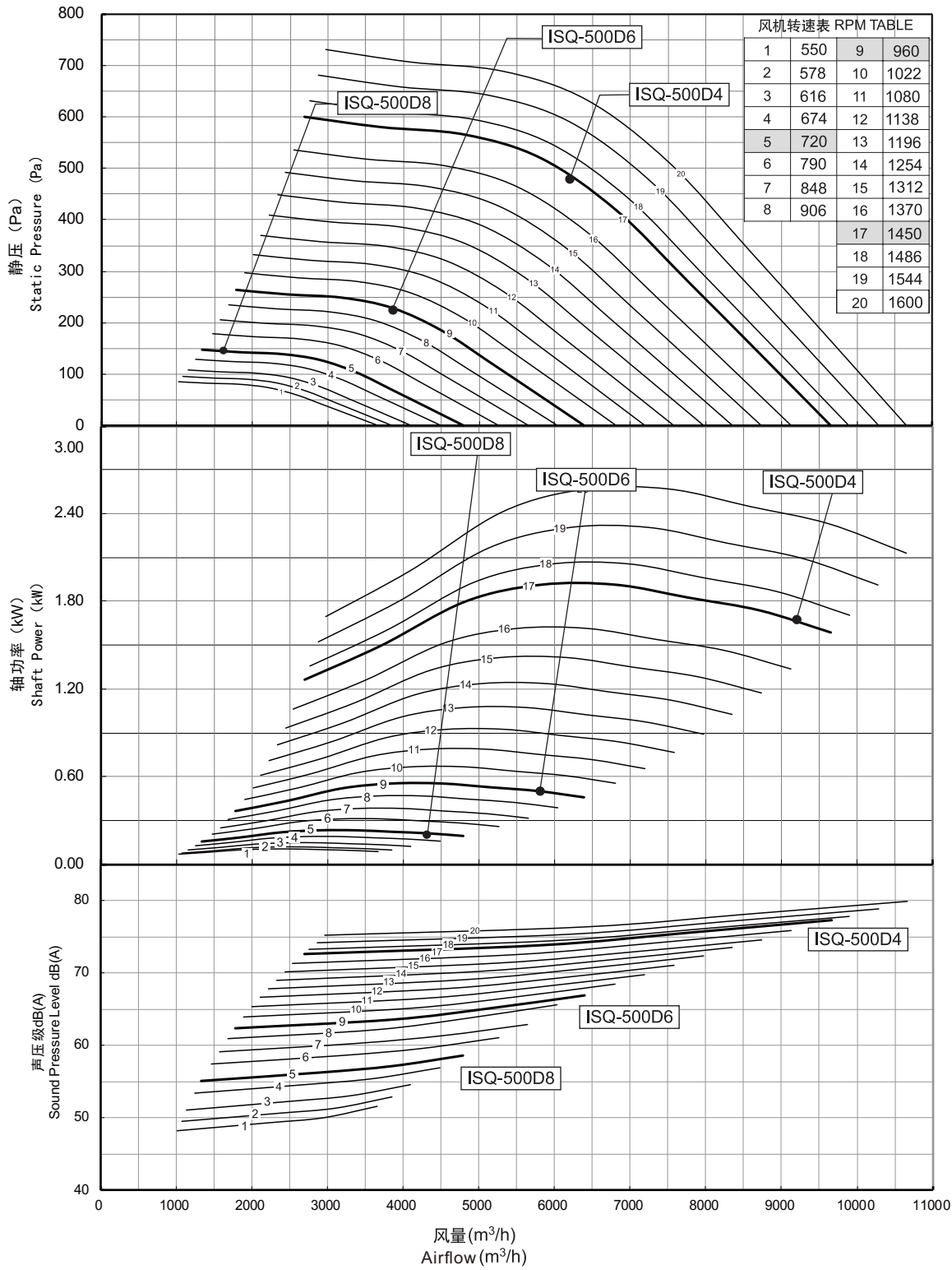
Performance certified is for installation type B-free inlet, ducted outlet. Power rating (kW) includes transmission losses. Performance ratings do not include the effects of appurtenances (accessories). dB(A)A-weighted sound pressure level is based on 11.5 dB sound attenuation per octave band at 1.5 m. Note that LpA-dB(A) levels are not licensed by AMCA International.

型号: ISQ-425
Model: ISQ-425



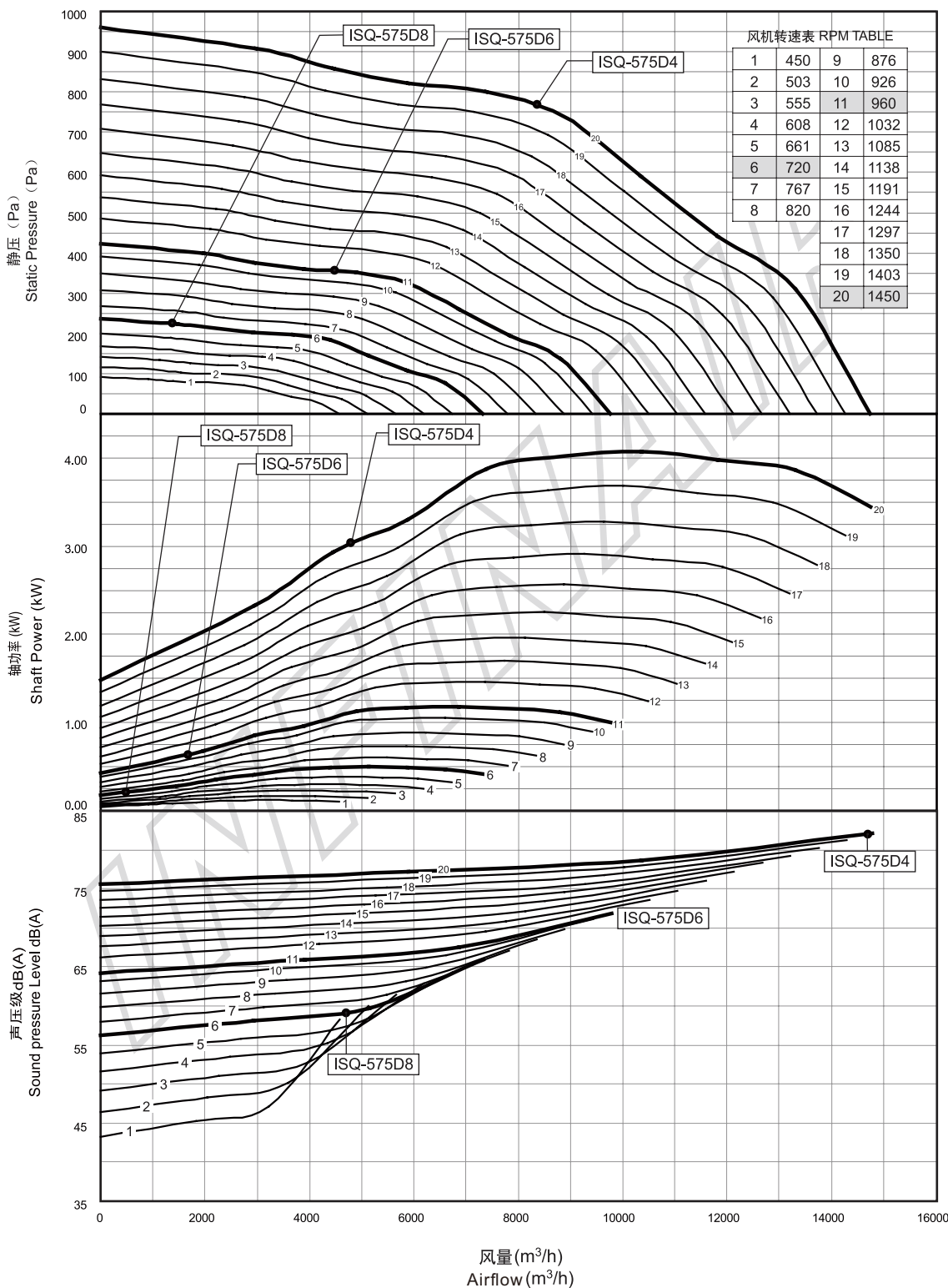
Performance certified is for installation type B-free inlet, ducted outlet. Power rating (kW) includes transmission losses. Performance ratings do not include the effects of appurtenances (accessories). dB(A)A-weighted sound pressure level is based on 11.5 dB sound attenuation per octave band at 1.5 m. Note that LpA-dB(A) levels are not licensed by AMCA International.

型号: ISQ-500
Model: ISQ-500



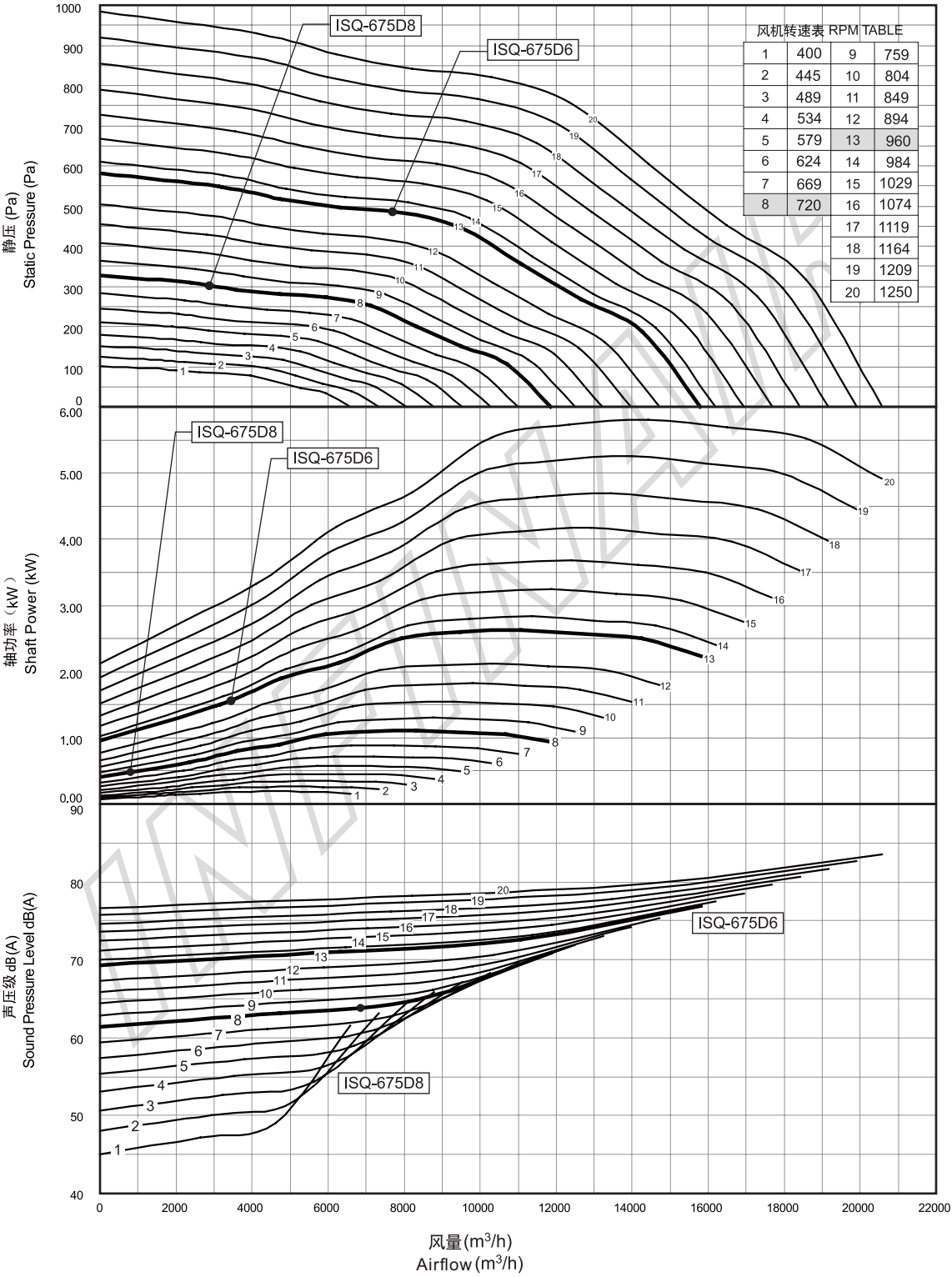
Performance certified is for installation type B-free inlet, ducted outlet. Power rating (kW) includes transmission losses. Performance ratings do not include the effects of appurtenances (accessories). dB(A)A-weighted sound pressure level is based on 11.5 dB sound attenuation per octave band at 1.5 m. Note that LpA-dB(A) levels are not licensed by AMCA International.

型号: ISQ-575
Model: ISQ-575



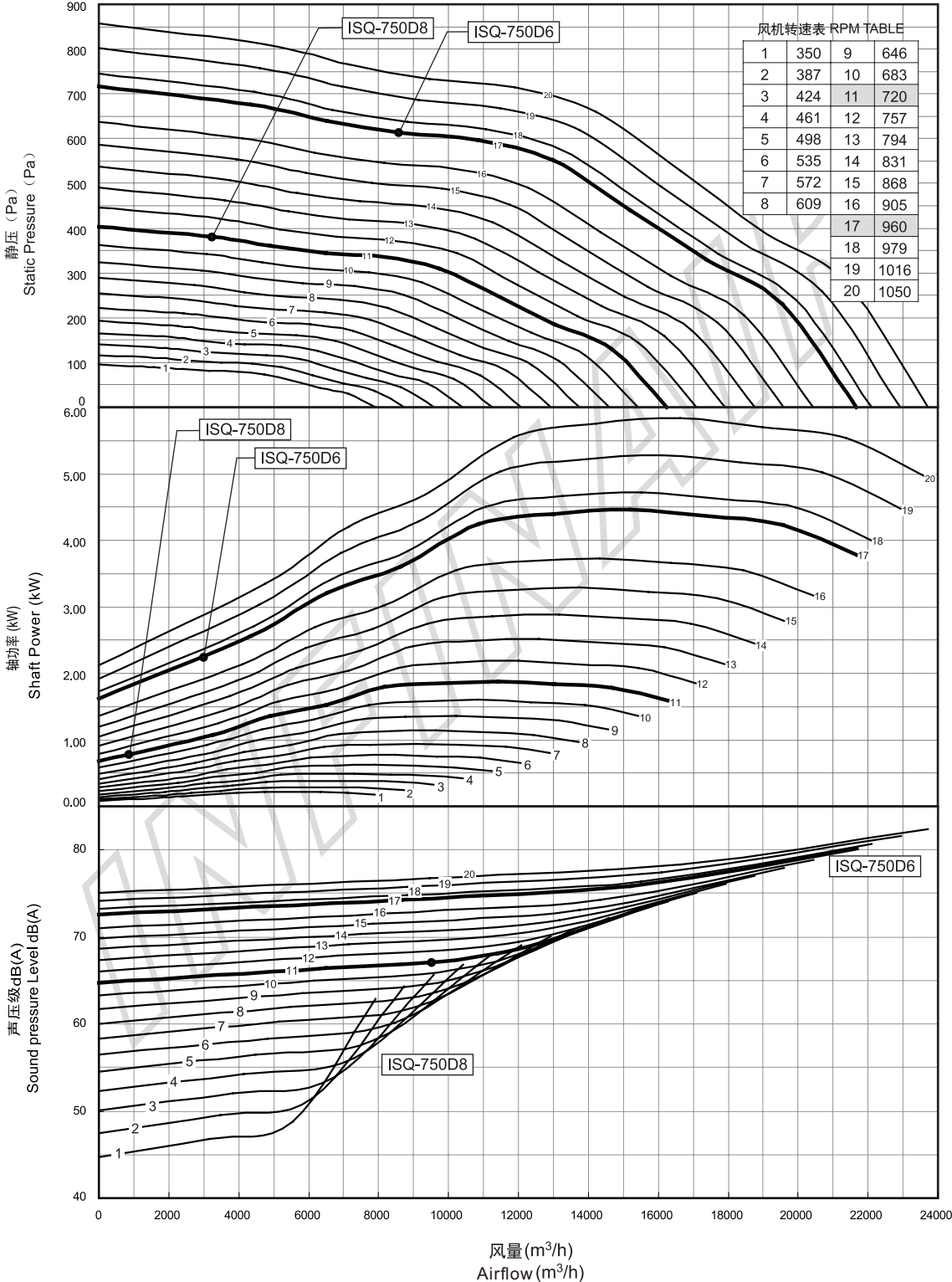
Performance certified is for installation type B-free inlet, ducted outlet. Power rating (kW) includes transmission losses. Performance ratings do not include the effects of appurtenances (accessories). dB(A)A-weighted sound pressure level is based on 11.5 dB sound attenuation per octave band at 1.5 m. Note that LpA-dB(A) levels are not licensed by AMCA International.

型号: ISQ-675
Model: ISQ-675



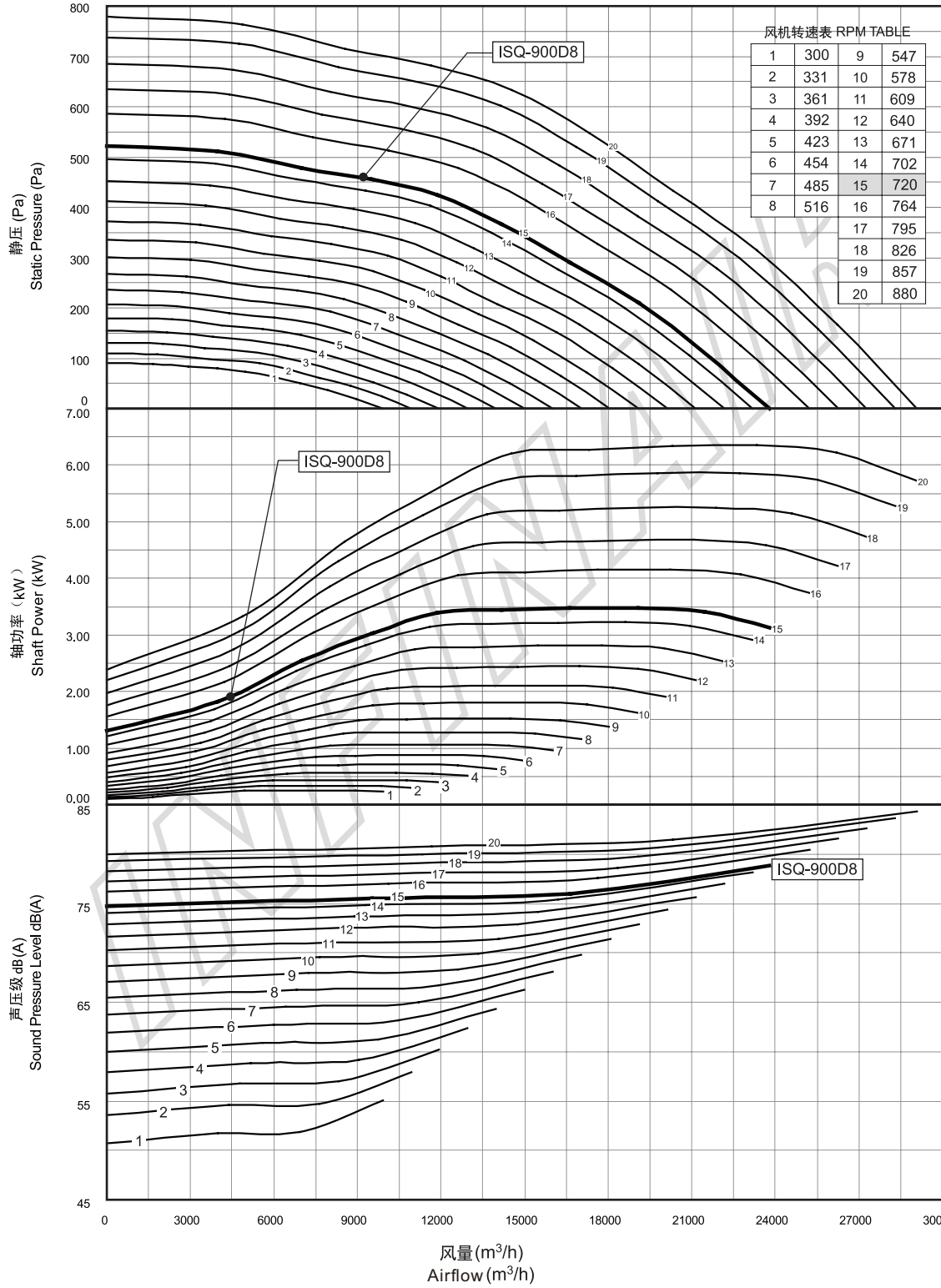
Performance certified is for installation type B-free inlet, ducted outlet. Power rating (kW) includes transmission losses. Performance ratings do not include the effects of appurtenances (accessories). dB(A)A-weighted sound pressure level is based on 11.5 dB sound attenuation per octave band at 1.5 m. Note that LpA-dB(A) levels are not licensed by AMCA International.

型号: ISQ-750
Model: ISQ-750



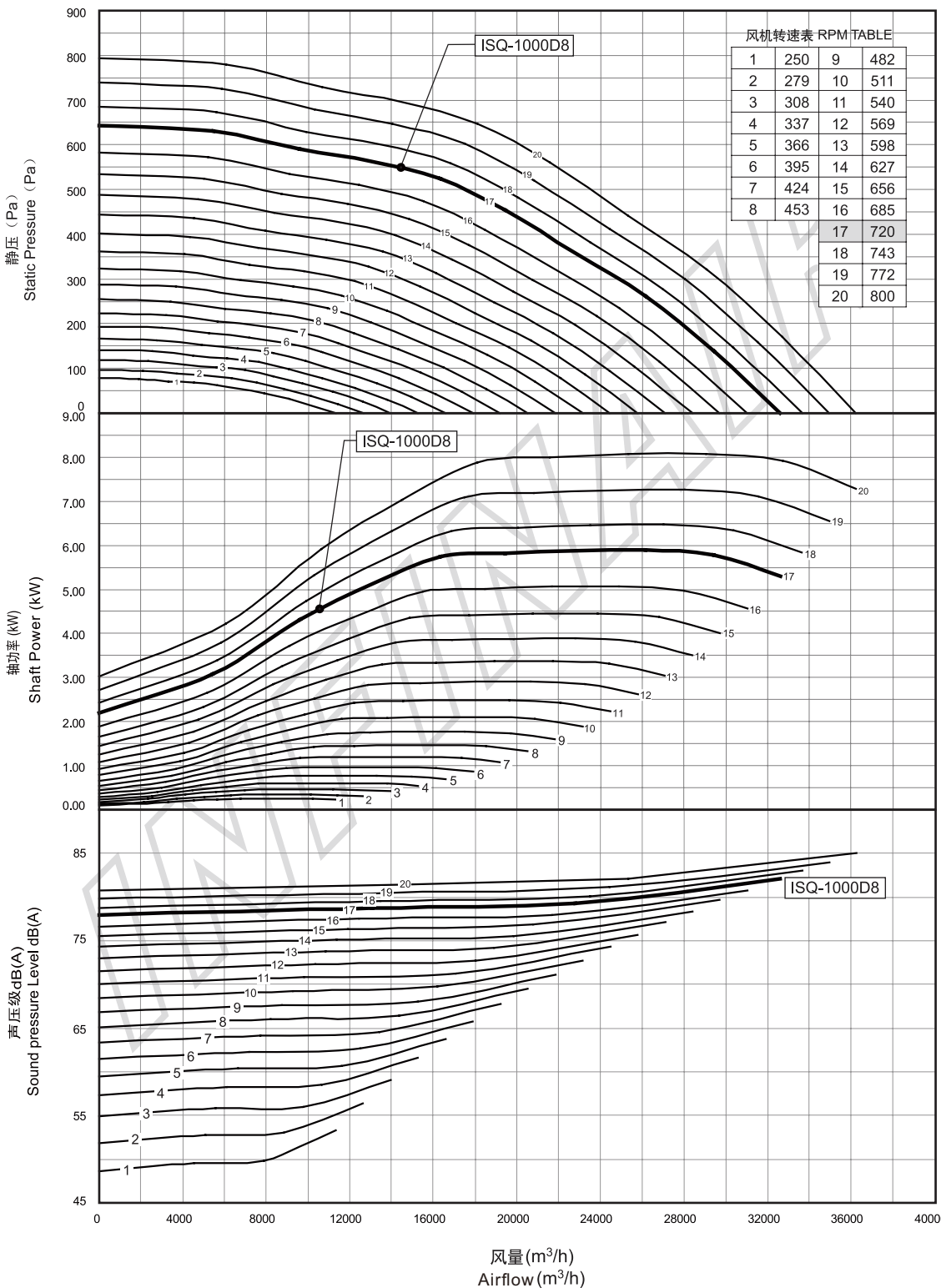
Performance certified is for installation type B-free inlet, ducted outlet. Power rating (kW) includes transmission losses. Performance ratings do not include the effects of appurtenances (accessories). dB(A)A-weighted sound pressure level is based on 11.5 dB sound attenuation per octave band at 1.5 m. Note that LpA-dB(A) levels are not licensed by AMCA International.

型号: ISQ-900
Model: ISQ-900



Performance certified is for installation type B-free inlet, ducted outlet. Power rating (kW) includes transmission losses. Performance ratings do not include the effects of appurtenances (accessories). dB(A)A-weighted sound pressure level is based on 11.5 dB sound attenuation per octave band at 1.5 m. Note that LpA-dB(A) levels are not licensed by AMCA International.

型号: ISQ-1000
Model: ISQ-1000



Performance certified is for installation type B-free inlet, ducted outlet. Power rating (kW) includes transmission losses. Performance ratings do not include the effects of appurtenances (accessories). dB(A)A-weighted sound pressure level is based on 11.5 dB sound attenuation per octave band at 1.5 m. Note that LpA-dB(A) levels are not licensed by AMCA International.

ISQ-300

风机 转速	风量 m³/h	声功率 SOUND POWER								声功 率级	声压 级
		八段倍频程 OCTAVE BANDS									
		1	2	3	4	5	6	7	8		
RPM	VOLUME									LW1A	dB(A)
720	989	49	53	51	53	51	44	35	27	54	43
	691	50	50	50	49	47	42	36	29	51	40
	387	50	49	49	48	46	42	36	30	50	39
	0	50	48	49	49	46	42	36	30	51	39
	1147	53	56	57	55	55	49	40	32	58	47
835	802	54	54	55	53	51	47	40	34	56	44
	449	55	53	53	52	50	46	40	34	54	43
	0	56	53	53	53	50	46	40	34	55	43
	1319	57	59	62	58	60	54	45	37	63	51
	922	58	58	59	56	55	51	45	38	59	48
960	516	59	58	57	56	53	51	45	39	58	47
	0	61	57	57	57	54	50	44	38	59	47
	1462	60	61	66	59	63	57	49	40	66	54
	1021	61	61	62	59	58	54	48	42	62	51
	572	62	61	60	58	56	54	48	42	61	50
1064	0	64	60	59	59	57	53	47	41	62	50
	1620	64	64	69	62	65	61	52	44	68	57
	1132	65	64	65	62	61	57	51	45	65	54
	634	66	64	63	61	59	57	51	45	64	53
	0	68	64	62	62	60	56	51	45	64	53
1294	1777	67	66	70	65	67	63	55	47	71	59
	1242	68	67	67	65	63	60	54	48	68	56
	696	69	67	65	64	61	59	54	48	67	55
	0	71	67	64	64	62	59	53	47	67	55
	1992	72	70	73	70	69	67	59	51	73	62
1450	1392	72	70	70	68	66	63	58	51	71	59
	780	73	70	68	67	64	62	57	51	70	58
	0	75	71	67	67	65	62	57	51	70	59
	2093	74	71	74	71	70	68	61	52	75	63
	1463	74	72	71	70	67	64	59	53	72	61
1524	820	75	72	70	69	66	63	59	53	71	60
	0	77	73	69	69	67	63	58	52	71	60
	2251	77	73	75	74	71	70	63	55	77	65
	1573	77	74	73	72	69	66	61	55	74	63
	882	77	74	72	71	68	65	61	55	73	62
1639	0	80	75	71	71	69	65	61	55	73	62
	2409	79	75	77	77	72	72	66	57	79	67
	1684	79	76	75	74	70	68	64	57	76	65
	944	80	77	74	73	69	67	63	57	75	64
	0	82	78	73	72	70	67	63	57	75	64
1869	2567	82	77	78	79	73	74	68	59	81	69
	1794	81	78	77	76	72	70	66	59	78	66
	1005	82	79	76	75	71	68	65	59	77	65
	0	84	80	75	74	72	69	65	59	77	66
	2725	84	79	79	81	74	76	70	61	82	71
1984	1905	84	80	78	78	74	71	67	61	80	68
	1067	84	81	78	76	73	70	67	61	79	67
	0	86	82	77	75	74	71	66	60	79	67
	2883	86	80	80	83	75	78	72	63	84	73
	2015	86	81	80	80	75	73	69	63	81	70
2099	1129	86	82	80	78	74	71	68	62	80	69
	0	88	84	79	77	75	72	68	62	80	69
	3041	88	82	81	85	76	79	74	65	86	74
	2125	87	83	81	81	76	74	71	64	83	71
	1191	88	84	81	80	76	73	70	64	82	70
2214	0	90	86	81	78	77	74	70	64	82	70
	3199	90	84	83	86	78	81	75	67	87	76
	2236	89	85	83	82	78	76	72	66	84	73
	1253	89	86	83	81	77	74	71	66	83	72
	0	92	88	83	79	78	75	71	65	83	72
2444	3357	91	86	84	87	79	81	77	69	88	77
	2346	90	86	84	83	79	77	74	67	85	74
	1315	90	88	84	82	78	75	73	67	84	73
	0	93	90	84	80	79	76	73	67	85	73
	3515	91	87	85	88	81	82	78	70	89	78
2559	2457	90	88	86	84	81	78	75	69	86	75
	1377	91	89	86	83	80	76	74	68	86	74
	0	93	91	86	81	80	77	74	68	86	74
	3673	92	89	87	89	83	83	79	72	90	79
	2567	91	90	87	85	82	79	76	70	88	76
2674	1438	92	91	87	84	81	78	75	70	87	75
	0	94	93	88	83	81	79	75	70	87	76
	3831	93	91	88	90	84	84	81	73	91	80
	2677	92	91	88	87	83	80	77	72	89	77
	1500	93	92	89	85	82	79	76	71	88	77
2789	0	95	94	89	84	83	80	76	71	88	77
	3984	93	92	89	91	86	84	82	74	92	81
	2784	93	93	90	88	84	81	78	73	90	79
	1560	93	94	90	87	83	80	77	72	89	78
	0	95	96	90	85	84	81	77	72	90	78

Values shown are for inlet Lw1A sound power levels for Installation Type B: Free inlet, ducted outlet. The sound power level ratings shown are in decibels, referred to as 10⁻¹² watts, calculated per AMCA International Standard 301. The A-weighted sound ratings shown have been calculated per AMCA International Standard 301. dB(A)-A-weighted sound pressure level is based on 11.5 dB sound attenuation per octave band at 1.5 m. Note that LpA-dB(A) levels are not licensed by AMCA International.

ISQ-425

风机转速	风量	声功率 SOUND POWER 八段倍频程 OCTAVE BANDS								声功率级	声压级
		1	2	3	4	5	6	7	8		
RPM	Volume									LW(A)	dB(A)
550	2266	63	66	59	55	52	49	47	45	58	47
	1824	61	63	57	54	51	47	44	41	57	45
	1366	59	58	55	53	51	48	44	40	56	44
	632	59	56	54	52	50	47	44	41	55	43
621	2559	65	68	62	58	55	52	50	48	61	50
	2060	64	65	60	57	55	50	47	44	60	48
	1542	62	60	58	56	54	51	47	43	59	48
	713	62	59	57	55	53	50	47	44	58	46
720	2966	69	71	66	62	59	56	54	52	65	54
	2388	67	69	64	61	58	54	51	48	64	52
	1788	66	64	62	60	58	55	51	47	63	51
	827	66	63	60	58	56	54	51	48	62	50
763	3144	70	73	68	64	60	57	55	53	67	55
	2531	68	70	66	62	60	56	52	49	65	54
	1894	67	65	63	61	59	56	53	49	64	53
	876	68	64	62	60	58	55	52	49	63	52
834	3436	72	75	71	66	63	60	57	55	69	58
	2766	70	72	69	65	62	58	55	52	68	56
	2071	69	67	65	63	61	59	55	51	67	55
	958	71	66	64	62	60	57	54	51	65	54
905	3729	74	75	76	68	65	62	59	57	72	61
	3002	72	73	74	67	64	61	57	54	70	59
	2247	71	70	69	65	63	61	57	53	69	57
	1039	73	69	67	64	62	60	57	54	68	56
960	3955	75	76	78	70	66	63	61	59	74	62
	3184	73	74	75	68	66	62	59	55	72	60
	2384	73	71	70	67	65	62	59	55	70	59
	1103	75	70	68	66	64	61	58	55	69	58
1047	4314	77	77	79	72	69	66	63	61	76	64
	3473	75	75	77	71	68	65	61	57	74	62
	2600	75	73	72	69	67	65	61	57	72	61
	1203	77	72	70	68	66	63	60	57	71	60
1118	4606	79	79	81	74	70	67	65	63	77	66
	3709	77	77	78	72	69	67	63	59	76	64
	2776	77	75	73	71	69	66	63	59	74	63
	1284	79	74	72	69	67	65	62	59	73	61
1189	4899	80	80	82	76	72	69	66	64	79	67
	3944	78	78	79	74	71	68	64	61	77	66
	2952	78	76	74	72	70	68	65	61	76	64
	1366	81	76	73	71	69	67	64	61	74	63
1260	5191	82	81	84	77	73	70	67	65	80	69
	4180	80	79	81	76	72	70	66	62	79	67
	3128	80	78	76	74	72	70	67	63	77	66
	1447	83	77	74	72	70	68	65	62	76	64
1331	5484	83	82	85	79	75	72	69	67	82	70
	4415	81	80	82	77	74	72	67	64	80	69
	3305	81	79	77	75	73	71	68	64	78	67
	1529	84	79	76	74	72	70	67	64	77	66
1402	5776	84	83	86	81	76	73	70	68	83	72
	4651	82	81	83	79	75	73	69	65	81	70
	3481	82	80	78	76	74	72	69	65	80	68
	1610	86	80	77	75	73	71	68	65	79	67
1450	5974	85	84	87	82	77	74	71	69	84	72
	4810	83	82	84	80	76	74	70	66	82	71
	3600	83	81	79	77	75	73	70	66	80	69
	1665	86	81	78	76	74	72	69	66	79	68
1544	6361	86	85	88	84	79	76	73	70	86	74
	5122	84	84	85	82	78	75	71	68	84	72
	3834	84	83	81	79	77	75	72	68	82	71
	1773	88	83	80	77	75	73	71	68	81	69
1615	6654	87	86	89	85	80	77	74	72	87	75
	5357	85	85	86	83	79	76	73	69	85	74
	4010	85	84	82	80	78	76	73	69	83	72
	1855	89	85	81	78	76	74	72	69	82	71
1686	6946	88	87	90	86	81	78	75	73	88	76
	5593	86	86	87	84	80	77	74	70	86	75
	4186	86	85	83	81	79	77	74	70	84	73
	1936	90	86	82	79	77	75	73	70	83	72
1757	7239	89	88	91	88	82	79	76	74	89	78
	5828	87	86	88	85	81	78	75	71	87	76
	4362	87	86	84	82	80	78	75	72	85	74
	2018	90	87	83	80	78	76	74	71	84	73
1828	7531	90	89	90	92	84	80	77	75	91	80
	6064	88	87	88	89	82	79	76	72	89	77
	4539	88	87	85	84	81	79	76	73	86	75
	2100	91	88	84	82	79	77	75	72	85	74
1900	7828	90	90	91	92	85	81	78	76	92	81
	6303	88	88	89	90	83	80	77	73	90	78
	4717	89	88	86	85	82	80	77	74	87	76
	2182	92	90	85	83	80	78	76	73	86	75

ISQ-675

风机 转速	风量 m³/h	声功率 SOUND POWER								声功 率级	声压 级
		八段倍频程 OCTAVE BANDS									
		1	2	3	4	5	6	7	8		
RPM	VOLU ME	1	2	3	4	5	6	7	8	LWIA	dB(A)
400	6584	66	65	63	61	57	60	66	72	73	62
	4620	62	62	60	58	55	52	49	46	61	49
	2627	61	60	59	57	53	49	44	38	59	47
	0	59	59	58	55	51	46	40	34	57	45
445	7325	68	69	65	63	60	61	67	73	75	63
	5140	65	65	63	61	58	54	52	49	63	52
	2923	63	63	62	60	56	52	47	41	62	50
	0	62	62	60	58	54	50	43	37	60	48
489	8049	70	72	68	66	63	63	69	75	76	64
	5648	67	68	65	64	60	57	54	51	66	54
	3212	66	66	64	62	59	55	49	44	64	53
	0	65	64	63	60	57	53	46	40	62	51
534	8790	72	76	70	68	65	64	70	76	77	66
	6168	69	71	68	66	63	59	56	53	68	57
	3507	68	69	66	65	61	57	52	47	67	55
	0	68	67	65	63	59	55	49	43	65	53
579	9531	73	78	73	70	67	65	71	77	79	67
	6688	71	73	70	68	65	61	58	56	70	59
	3803	70	71	68	67	63	60	54	49	69	57
	0	70	69	68	65	61	58	52	45	67	55
624	10271	74	81	75	72	69	66	72	78	80	68
	7207	72	76	71	70	67	63	60	57	72	61
	4098	72	74	70	69	66	62	57	51	71	59
	0	72	71	70	67	63	60	54	48	69	57
669	11012	76	82	77	74	71	67	73	79	81	70
	7727	74	77	74	72	69	65	62	59	74	63
	4394	74	75	72	71	67	64	59	53	73	61
	0	74	73	71	69	65	62	56	50	71	59
720	11852	79	84	79	76	73	70	74	80	82	71
	8316	77	79	76	74	71	67	64	61	76	65
	4729	76	77	74	72	69	66	61	56	75	63
	0	76	75	73	71	67	64	58	52	73	61
759	12493	80	85	81	77	75	71	74	80	83	72
	8767	79	80	78	75	72	68	65	63	78	66
	4985	78	79	76	74	71	67	62	57	76	65
	0	77	77	75	72	68	65	60	54	74	63
804	13234	82	86	83	79	76	73	75	81	85	73
	9287	80	82	79	77	74	70	67	64	79	68
	5281	80	80	78	75	72	69	64	59	78	66
	0	79	78	77	74	70	67	62	55	76	64
849	13975	84	87	85	80	77	74	76	82	86	74
	9806	82	83	81	78	75	72	68	65	81	69
	5576	82	81	80	77	74	70	66	60	79	68
	0	80	80	78	75	71	68	63	57	77	66
894	14716	86	88	87	82	79	75	76	82	87	75
	10326	84	84	83	79	77	73	70	67	82	71
	5872	83	83	81	78	75	72	67	62	81	69
	0	82	82	80	77	73	70	65	59	79	67
960	15802	88	89	89	84	81	77	77	83	88	77
	11088	86	86	85	81	79	75	71	69	84	73
	6305	85	85	83	80	77	74	69	64	82	71
	0	83	84	82	79	75	71	67	61	81	69
984	16197	89	89	90	84	81	78	78	84	89	77
	11366	87	86	86	82	79	76	72	69	85	73
	6463	86	85	84	80	78	74	70	65	83	72
	0	84	85	82	79	76	72	68	62	81	70
1029	16938	90	90	92	86	82	79	78	84	90	79
	11885	89	87	87	83	80	77	73	70	86	74
	6758	88	86	85	81	79	75	71	66	84	73
	0	85	86	84	81	77	73	69	63	83	71
1074	17678	92	91	93	87	84	81	79	85	91	80
	12405	90	88	89	84	82	78	74	71	87	76
	7054	89	87	87	83	80	77	72	67	86	74
	0	86	87	85	82	78	74	71	64	84	72
1119	18419	93	92	95	88	85	82	79	85	92	81
	12925	91	89	90	85	83	79	75	73	88	77
	7349	90	89	88	84	81	78	74	68	87	75
	0	87	88	86	83	79	75	72	66	85	74
1164	19160	94	92	96	89	86	83	80	86	93	82
	13445	93	90	91	86	84	80	76	74	89	78
	7645	91	90	89	85	82	79	75	70	88	76
	0	88	90	87	84	80	76	73	67	86	75
1209	19901	96	93	97	90	87	84	80	86	94	83
	13964	94	91	92	87	85	81	77	75	90	79
	7941	93	91	90	86	83	80	76	71	89	77
	0	89	91	88	85	81	77	74	68	87	76
1250	20576	97	94	99	91	88	85	81	87	95	84
	14438	95	92	94	88	86	82	78	75	91	80
	8210	94	91	91	86	84	81	77	72	90	78
	0	90	92	89	86	82	78	75	69	88	77

ISQ-750

风机 转速	风量 m³/h	声功率 SOUND POWER								声功 率级	声压 级
		八段倍频程 OCTAVE BANDS									
		1	2	3	4	5	6	7	8		
RPM	VOLU ME	1	2	3	4	5	6	7	8	LWIA	dB(A)
350	7903	68	65	62	60	57	61	67	73	74	63
	5545	63	61	60	58	54	51	49	46	60	49
	3153	61	60	59	57	53	48	43	38	58	47
	0	59	59	57	54	51	46	39	33	56	45
387	8738	69	68	65	63	60	63	69	75	76	64
	6132	65	64	63	61	57	54	51	48	63	51
	3487	64	63	61	59	56	51	46	41	61	50
	0	62	62	60	57	54	49	42	36	59	47
424	9574	71	71	68	65	62	64	70	76	77	66
	6718	67	67	65	63	60	56	54	51	65	54
	3820	66	66	64	62	58	54	48	43	64	52
	0	65	64	63	59	56	51	45	39	62	50
461	10409	73	74	70	68	64	65	71	77	78	67
	7304	69	70	67	65	62	58	56	53	68	56
	4153	68	68	66	64	60	56	51	46	66	54
	0	67	67	65	62	58	54	48	41	64	52
498	11245	74	77	72	70	66	66	72	78	79	68
	7890	71	72	69	67	64	60	58	55	70	58
	4487	70	71	68	66	63	58	53	48	68	56
	0	69	69	67	64	60	56	50	44	66	54
535	12080	75	79	74	71	68	67	73	79	81	69
	8477	73	75	71	69	66	62	60	57	72	60
	4820	72	73	70	68	65	61	55	50	70	58
	0	72	71	69	66	62	59	52	46	68	56
572	12915	77	82	76	73	70	68	74	80	82	70
	9063	74	77	73	71	68	64	61	58	73	62
	5153	74	75	71	70	66	62	57	52	72	60
	0	74	73	71	68	64	61	54	48	70	58
609	13751	78	84	77	75	72	69	75	81	83	71
	9649	76	79	74	73	69	66	63	60	75	64
	5487	75	77	73	71	68	64	59	54	73	62
	0	75	74	72	70	65	63	56	50	72	60
646	14586	79	85	79	76	74	70	75	81	84	72
	10235	77	80	76	74	71	67	64	62	77	65
	5820	77	78	75	73	70	66	61	56	75	64
	0	77	76	74	71	67	64	58	52	73	62
683	15422	81	86	81	78	75	71	76	82	85	73
	10822	79	82	78	76	73	69	66	63	78	67
	6153	79	80	76	74	71	68	62	57	77	65
	0	79	77	75	73	69	66	60	54	75	63
720	16257	83	87	83	79	76	73	77	83	86	74
	11408	81	83	79	77	74	70	67	64	80	68
	6487	80	81	78	76	73	69	64	59	78	66
	0	80	79	77	74	70	67	61	55	76	65
757	17093	84	88	85	81	78	74	78	84	87	75
	11994	82	84	81	78	75	72	68	66	81	69
	6820	82	82	79	77	74	70	65	60	79	68
	0	81	80	78	76	71	68	63	57	78	66
794	17928	86	89	86	82	79	75	78	84	88	76
	12580	84	85	82	80	77	73	70	67	82	71
	7154	83	83	81	78	75	72	67	62	81	69
	0	82	82	80	77	73	70	64	58	79	67
831	18764	87	90	88	83	80	77	79	85	89	77
	13167	85	86	84	81	78	74	71	68	83	72
	7487	85	85	82	79	76	73	68	63	82	70
	0	84	83	81	78	74	71	66	60	80	69
868	19599	89	91	89	84	81	78	79	85	89	78
	13753	87	87	85	82	79	75	72	69	85	73
	7820	86	86	84	80	78	74	69	64	83	72
	0	85	84	82	79	75	72	67	61	81	70
905	20434	90	91	91	85	82	79	80	86	90	79
	14339	88	88	87	83	80	76	73	70	86	74
	8154	87	87	85	81	79	75	71	65	84	73
	0	86	86	83	80	77	73	68	62	82	71
960	21676	92	93	93	87	84	81	81	87	92	80
	15210	90	89	89	84	82	78	75	72	87	76
	8649	89	88	87	83	80	77	72	67	86	74
	0	87	87	85	82	78	75	70	64	84	73
979	22105	93	93	94	88	84	81	81	87	92	81
	15511	91	90	89	85	82	79	75	72	88	76
	8820	90	89	87	83	81	77	73	68	86	75
	0	88	88	86	83	79	75	71	65	85	73
1016	22941	94	94	95	89	85	82	81	87	93	82
	16098	92	91	90	86	83	80	76	73	89	77
	9154	91	90	88	84	82	78	74	69	87	76
	0	89	89	87	84	80	76	72	66	86	74
1050	23708	95	94	96	89	86	83	82	88	94	82
	16636	93	91	91	87	84	81	77	74	90	78
	9460	92	91	90	85	83	79	75	70	88	77
	0	90	90	88	84	81	77	73	67	87	76

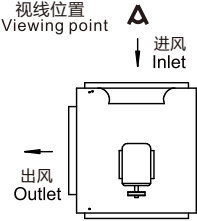
可选出风方向
Different Discharge Direction Options

皮带型 Belt Drive

<p>MTDH</p> <p>水平出风 Horizontal Discharge</p>	<p>MTDL</p> <p>左出风 Left Discharge</p>	<p>MTDR</p> <p>右出风 Right Discharge</p>	<p>MTVTDLR</p> <p>上进风，左右出风 Top Intake, L&R Discharge</p>
<p>MLDT</p> <p>上出风 电机左置 Top Discharge, Motor Location Left Side</p>	<p>MRDT</p> <p>上出风 电机右置 Top Discharge, Motor Location Right Side</p>	<p>MTDLR</p> <p>左右出风 L & R Discharge</p>	<p>MTVTDLR</p> <p>下进风，左右出风 Bottom Intake, L&R Discharge</p>
<p>MLDB</p> <p>下出风 电机左置 Bottom Discharge, Motor Location Left Side</p>	<p>MRDB</p> <p>下出风 电机右置 Bottom Discharge, Motor Location Right Side</p>	<p>MLDTB</p> <p>上下出风 电机左置 Top&Bottom Discharge, Motor Location Left Side</p>	<p>MRDTB</p> <p>上下出风 电机右置 Top&Bottom Discharge, Motor Location Right Side</p>
<p>MRVTDB</p> <p>上进风，下出风 Top Intake, Bottom Discharge</p>	<p>MTVTDR</p> <p>上进风，右出风 Top Intake, Right Discharge</p>	<p>MTVTDL</p> <p>上进风，左出风 Top Intake, Left Discharge</p>	<p>说明：左上角为出风方向/电机位置代码 Note: The codes at the top left corner indicate the discharge and motor location</p>
<p>MLVBDT</p> <p>下进风，上出风 Bottom Intake, Top Discharge</p>	<p>MTVBDL</p> <p>下进风，左出风 Bottom Intake, Left Discharge</p>	<p>MTVBDR</p> <p>下进风，右出风 Bottom Intake, Right Discharge</p>	<p>MTDLRH 电机上置，出风方向左、右、水平三侧 Motor Location Top, Left, Right and Horizontal discharge</p> <p>字母含义 Letter Specification M: Motor T: Top D: Discharge L: Left R: Right H: Horizontal B: Bottom</p>

直联型 Direct Drive

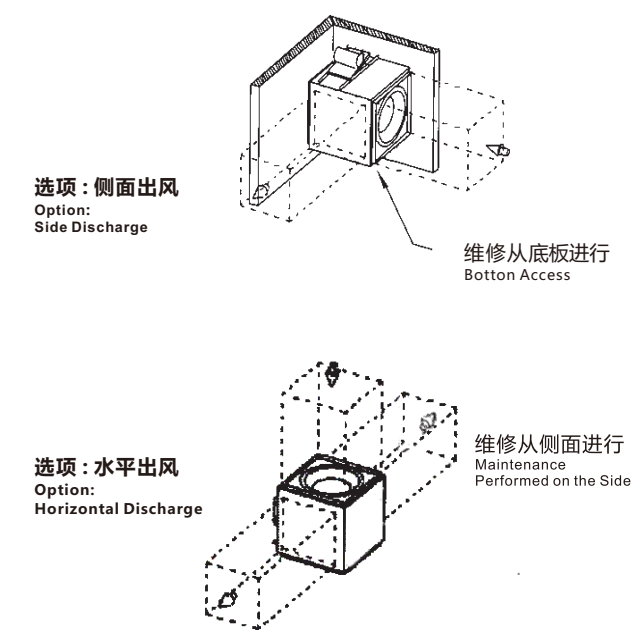
<p>DDH</p> <p>水平出风 Horizontal Discharge</p>	<p>DDL</p> <p>左出风 Left Discharge</p>	<p>DDR</p> <p>右出风 Right Discharge</p>	<p>DVTDLR</p> <p>上进风，左右出风 Top Intake L&R Discharge</p>
<p>DDT</p> <p>上出风 Top Discharge</p>	<p>DDB</p> <p>下出风 Bottom Discharge</p>	<p>DDLRL</p> <p>左右出风 L & R Discharge</p>	<p>DVBDLR</p> <p>下进风，左右出风 Bottom Intake, L&R Discharge</p>
<p>DVTDB</p> <p>上进风，下出风 Top Intake, Bottom Discharge</p>	<p>DVTDL</p> <p>上进风，左出风 Top Intake, Left Discharge</p>	<p>DVTDR</p> <p>上进风，右出风 Top Intake, Right Discharge</p>	
<p>DVBDT</p> <p>下进风，上出风 Bottom Intake, Top Discharge</p>	<p>DVBDL</p> <p>下进风，左出风 Bottom Intake, Left Discharge</p>	<p>DVBDR</p> <p>下进风，右出风 Bottom Intake, Right Discharge</p>	<p>DDLRL 直联驱动，出风方向左、右 Direct Drive, Left and Right Discharge</p> <p>字母含义 Letter Specification D: Direct Drive D: Discharge L: Left R: Right H: Horizontal B: Bottom</p>



图例：上进风，右出风（MTVTDR）
安装方式：垂直（竖立/立式）
电机位置：电机顶置
进风方向：上
出风方向：右
注意：电机位置和出风方向为进风口侧观察的结果（如图所示）

Example: Top Intake, Right Discharge (MTVTDR)
Mounting style: Vertical (Erect/Upright)
Motor location: Motor Location Top
Intake: Top
Discharge: Right
Note: The motor location and discharge direction are determined by viewing from the fan inlet end (as shown).

机组尺寸及安装
Unit Size and Installation



风机的固定
Fan Fastening

电机重量表
Motor Weight Table

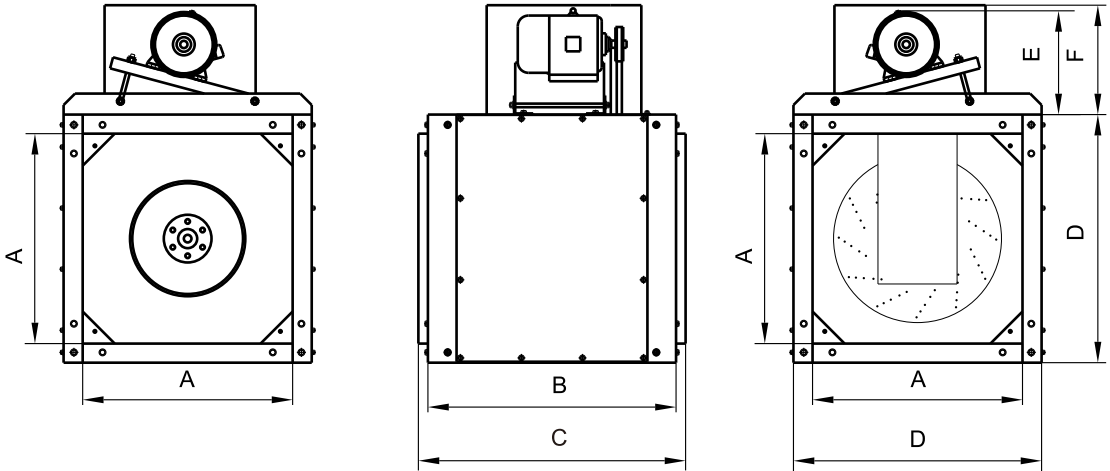
功率(kW) Power (kW)	电机重量 (kg) Motor Weight (kg)			
	2P	4P	6P	8P
0.18	14	13.5	14	16
0.25	14.5	14	14.5	17
0.37	15	14.5	16	24
0.55	15.5	15	17	28
0.75	15	16	22	30
1.1	16	21	24	32
1.5	21	23	32	40
2.2	24	33	41	64
3	33	35	63	78
4	41	41	72	105
5.5	63	65	81	115
7.5	70	76	118	145
11	110	118	145	160
15	122	137	180	235
18.5	142	170	231	290

ISQ系列产品可以用于水平安装，垂直安装，电机可以置于风机侧面、上方或者下方。随机附带四个安装撑脚，可固定在风机顶部通过丝杆与吊装减振器连接，也可固定在风机底部，直接与座装减振器相连。（减振器与丝杆他方提供）。

The ISQ fan can be installed horizontally or vertically. The motor can be mounted atop, on the sides or at the bottom of the fan. The ISQ fan comes with four supporting feet that can be fixed atop the fan and connected with the hanging isolators through screw rods. Also, they can be fixed at the bottom and connected with base isolators. (Users are to supply vibration isolators and screw rods).

改变出风方向
ISQ系列产品允许气流从电机以及相对侧以外的任何一个侧面流出，并能在现场改变出风口方向，将新的出口方向上的检修板拆掉加装法兰，将原出口法兰封住（现场加工板材即可）。

Chang in discharge directions
The ISQ fan has discharge positions on any sides except the motor side and its opposite side and the opposite side of the inlet. The discharge directions can be changed onsite. To do this, the access panel of the new desired discharge direction is removed for an added flange and the original discharge flange is sealed (This can be done onsite).

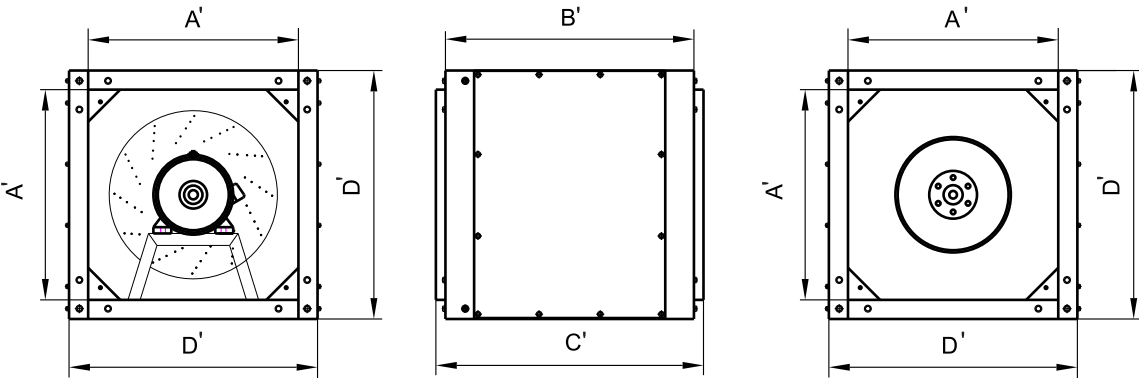


皮带型
Belt Drive

ISQ	A	B	C	D	E _{Max}	F _{Optional} 选项	KG*
ISQ-300	400	500	550	470	380	420	37
ISQ-425	550	650	700	650	420	460	61
ISQ-500	650	780	830	750	460	500	89
ISQ-575	750	880	950	850	460	500	112
ISQ-675	900	950	1020	1000	500	550	137
ISQ-750	1000	980	1050	1100	500	550	165
ISQ-900	1200	1030	1100	1300	550	600	225
ISQ-1000	1350	1080	1050	1450	550	600	261

* 以上重量不含电机
The weight in the above table does not include motor weight

单位: mm Unit: mm



直联型
DirectDrive

ISQ-D	A'	B'	C'	D'	KG*
ISQ-300D	400	500	550	470	29
ISQ-425D	550	650	700	650	50
ISQ-500D	650	650	700	750	68
ISQ-575D	750	700	770	850	92
ISQ-675D	900	825	895	1000	111
ISQ-750D	1000	900	970	1100	136
ISQ-900D	1170	1020	1120	1270	203
ISQ-1000D	1300	1060	1160	1400	282

* 以上重量不含电机
The weight in the above table does not include motor weight

单位: mm Unit: mm

产品技术标准
Product Specifications

第一节：品质标准

离心式管道风机应按照空气运动与控制协会第210和300标准进行检测并通过其认证，每台风机出厂时均应贴有AMCA空气动力特性和声音的特许认证标签。生产企业应当通过ISO 9001:2008认证。

Section 1: Quality Standards
Inline Square Centrifugal Fan shall be tested and certified in accordance with AMCA Standard 210 & 300. AMCA Seal for Sound and Air Performance shall be tagged on each fan before leaving the factory. The manufacturer shall be certified by ISO 9001:2008.

第二节：风机类型

风机类型应为管道离心风机，并采用铝制后倾离心式叶轮直接面对来风方向。叶轮进口文丘里管截面应呈圆弧形确保风机入口文丘里管过渡顺畅。每个叶轮均经过动态平衡，达到AMCA 204标准G2.5平衡等级。

Section 2: Fan Type
The fan shall be centrifugal inline type, with an aluminum backward inclined centrifugal wheel directly facing incoming air. The wheel cone shall have a curved section to ensure smooth air movement. Each wheel should be subject to static and dynamic balancing tests up to AMCA 204- G2.5 balance quality grade.

第三节：风机外壳

材料：风机外壳应为镀锌钢板材（选项：冷轧钢板，静电环氧喷涂）製成，其厚度应足以保证能够承受驱动机构和电机的重量。
外型：其外型应基本为方型，配有方型进出口套接法兰以避免制作方 / 圆转接头。壳体设计应允许不同的出口方向。在风机的左右两侧均应设置较大的检修门，保证无须拆卸风管即可维修或更换电机。

Section 3: Fan Housing
Material: The fan housing shall be made in cast steel sheet (Option: cold roll steel sheet finished with electrostatic epoxy coatings) .It shall be thick and strong enough to support the drive mechanism and motor.
Shape: The housing shall be a square one equipped with square flanged sleeves to avoid square/ round connectors. The housing design shall allow different discharge directions. On the left and right sides, there shall be sizable access doors so that motor maintenance and replacement can be performed without the need to remove the air ducts.

第四节：驱动装置（仅适用于皮带驱动的类型）

轴：风机轴应通过均质炉进行热处理达到硬度HB370等级，其表面应进行坚膜防腐处理，并且连同叶轮进行整体动平衡。其设计运行速度应至少超过风机最大运行速度 25%。
皮带轮： 皮带轮的尺寸应当按照驱动功率的150%选型， 皮带轮应当是铸铁的，键连接到轴上。皮带轮应当配有退拔形式的轴套进行固定以便于拆卸。
轴承：应采用两个轴承支撑风机轴，以避免振动直接施加于电机之上。在样本公布的最大转速下，轴承寿命为（L-10）80, 000小时。轴承类型应是永久密封的，可润滑的带座型滚珠金属轴承。
支撑：驱动装置应当使用厚的经过粉末涂装防腐的钢板支撑。皮带松紧应通过可调节电机底座进行，其设计应确保风机轴与电机轴的平行度。

Section 4: Drive Mechanism (For belt drive type only)
Shaft: The shaft shall be heat treated through homogenizing furnace to the hardness level of HB370, and the hard film shall be applied on the surface to avoid corrosion. The shaft shall also be subject to balancing tests together with the wheel. The design speed of the shaft shall be at least 25% more than the maximum running speed of the fan.
Pulley: Fan pulleys shall be sized for a minimum of 150% of the driving power. Pulleys shall be cast iron, keyed and securely attached to the wheel and motor shaft. Conical type bushings shall be equipped for easy removal of the pulleys.
Bearing: Two bearings shall be used to support the shaft to avoid vibrations directly coming onto the motor. The bearing L10 rating life shall be 80, 000 hours at the maximum operating speed specified in the catalog. The bearing shall be of permanently sealed type and metal pedestal ball bearing that can be lubricated.
Drive Support: Drive mechanism shall be supported by thick steel sheet finished with powder coatings to avoid corrosion. The belt tension can be adjusted through the adjusting bolt at the motor base. The design shall make sure the fan shaft and motor shaft is always parallel.

第五节：电机

电机应与风机负载精密配合，防护等级IP55，绝缘等级 F。电机轴承应为滚珠轴承并免润滑。

Section 5: Motor
The motor shall match the fan load precisely. It shall be IP55 rated with Class F Insulation. The motor bearing shall be lubrication-free ball type.

第六节：铭牌

永久固定的铝制标牌上应标有清晰可辨的风机编号，型号和产品序号（即每台机器的唯一身份证明），从而可保证客户方便地查询配件的历史记录。

Section 6: Nameplate
A permanently fixed aluminum nameplate shall clearly display the fan number, product model and serial number (a unique ID for each fan) so that the parts used can be traceable by customers.

第七节：可接受供应商

可接受供货商的资信等级为AAA级，英飞或类似产品，设计基于英飞ISQ型号。

Section 7: Qualified Suppliers
Qualified suppliers shall be assigned a credit rating of “AAA”. **INFINAIR®** or similar products supplied are designed based on Model ISQ of **INFINAIR®**

飞鹰服务
Eagle Service

