



浙江朗迪集团股份有限公司  
ZHEJIANG LANGDI GROUP CO.,LTD.

# LDR后向离心通风机

DOUBLE INLET CENTRIFUGAL FAN  
WITH BACK CURVED BLADES

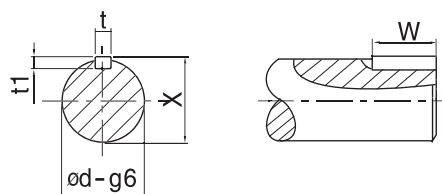
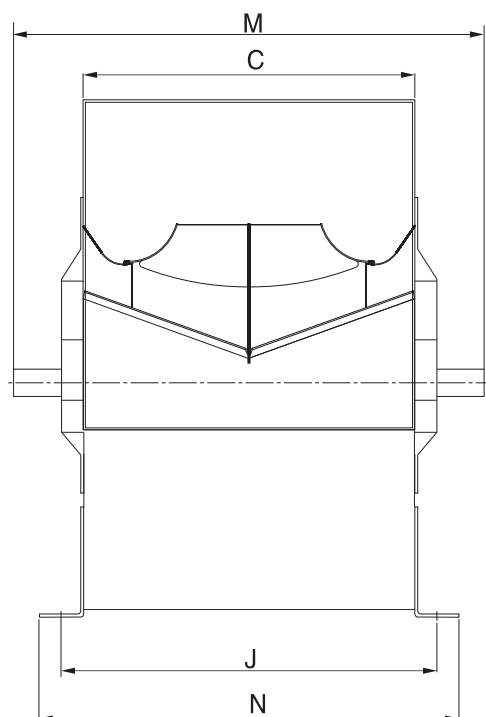
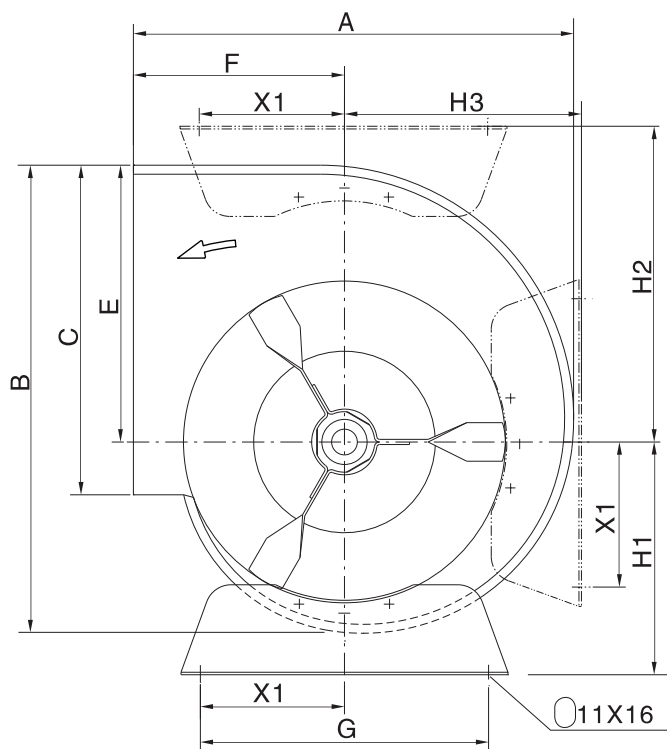
Zhejiang Langdi Group Co. Ltd certifies that the LDR centrifugal fans shown herein are licensed to bear the AMCA Seal. The ratings shown are based on tests and procedures performed in accordance with AMCA Publication 211 and AMCA Publication 311 and comply with the requirements of the AMCA Certified Ratings Program.

浙江朗迪集团股份有限公司特此证明，此处所示LDR离心风机获得了加盖AMCA印章的授权。所示额定值系根据AMCA出版物211和AMCA出版物311所进行测试和程序确定，并符合AMCA认证额定值计划的要求。



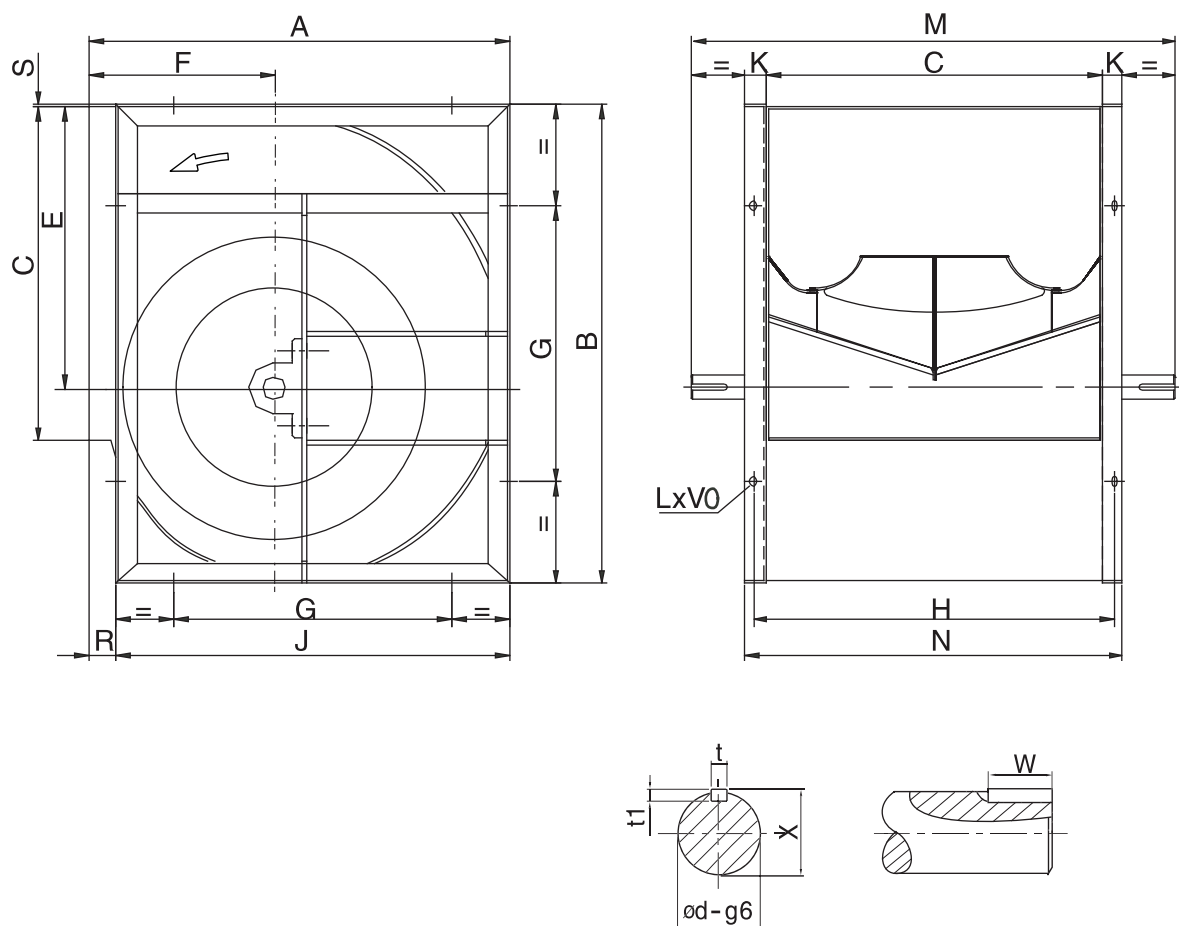
LDR September 2020

## LDR-L



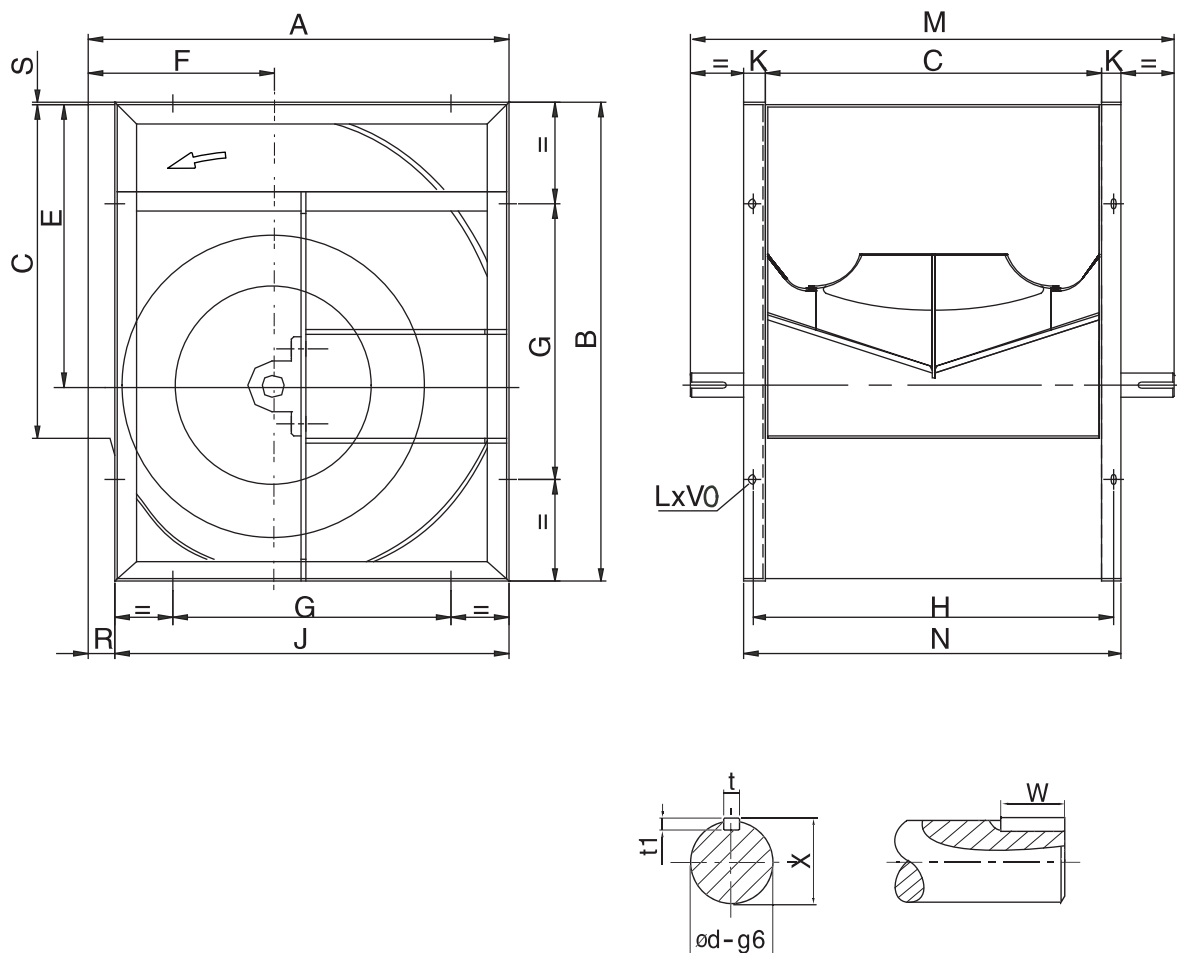
Model	A	B	C	E	F	G	J	M	N	X1	H1	H2	H3	t	t1	X	W	Φd
200	342	364	256	215	164	224	281	420	306	112	181	245	184	6	6	22.5	40	20
225	380	408	288	243	180	224	313	460	338	112	197	274	204	6	6	22.5	50	20
250	417	454	322	270	195	224	347	490	372	112	212	299	227	6	6	22.5	55	20

## LDR-R



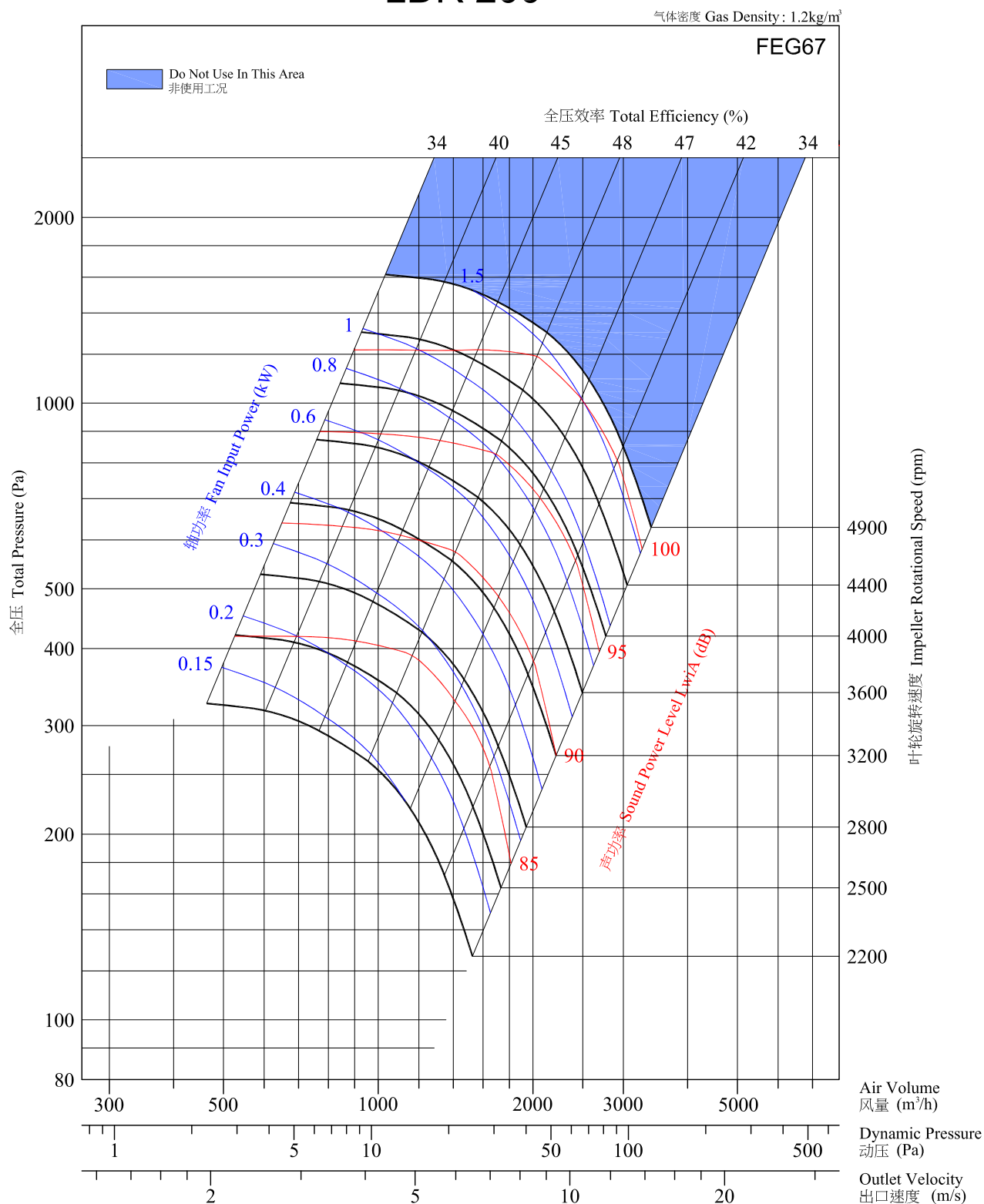
Model	A	B	C	E	F	G	H	J	K	M	N	R	S	t	t1	W	X	φ d	LxV
280	466	518	361	302	215	280	391	432	30	575	421	34	5	8	7	50	28	25	13x18
315	518	578	404	340	236	280	434	480	30	640	464	38	3	8	7	60	28	25	13x18
355	578	655	453	383	261	355	493	548	40	700	533	30	6	8	7	60	33	30	13x18
400	651	736	507	431.5	290	355	547	613	40	760	587	38	4.5	8	7	60	33	30	13x18
450	726	827	569	486	322	530	609	681	40	845	649	45	5	10	8	70	38	35	13x18
500	800	918	638	538	352	530	678	750	40	915	718	50	5	10	8	70	38	35	13x18
560	893	1030	715	602	390	530	765	845	50	1000	815	48	8	12	8	70	43	40	13x18
630	999	1157	801	678.5	434	530	851	946	50	1090	901	53	7	14	9	70	48.5	45	13x18
710	1121	1303	898	765	485	630	948	1058	50	1255	998	63	7	14	9	90	53.5	50	17x22

## LDR-K



Model	A	B	C	E	F	G	H	J	K	M	N	R	S	t	t1	W	X	φ d	LxV
280	466	518	361	302	215	280	391	432	30	600	421	34	5	8	7	60	33	30	13x18
315	518	578	404	340	236	280	434	480	30	665	464	38	3	8	7	70	33	30	13x18
355	578	655	453	383	261	355	493	548	40	725	533	30	6	10	8	70	38	35	13x18
400	651	736	507	431.5	290	355	547	613	40	790	587	38	4.5	10	8	70	38	35	13x18
450	726	827	569	486	322	530	609	681	40	890	649	45	4.5	12	8	90	43	40	13x18
500	800	918	638	538	352	530	678	750	40	960	718	50	5	12	8	90	43	40	13x18
560	893	1030	715	603	390	530	765	845	50	1070	815	48	8	14	9	90	53.5	50	13x18
630	999	1157	801	678.5	434	530	851	946	50	1155	901	53	7	14	9	90	53.5	50	13x18
710	1121	1303	898	765	485	630	948	1058	50	1290	998	63	7	18	11	90	64	60	17x22
800	1250	1468	1007	862	535	710	1057	1181	50	1450	1107	69	7	18	11	90	64	60	17x22
900	1408	1648	1130	971	604	800	1180	1319	60	1570	1250	89	7	18	11	100	69	65	17x22
1000	1541	1810	1267	1066	657	900	1317	1462	60	1700	1387	79	9	18	11	100	69	65	17x22

# LDR 200

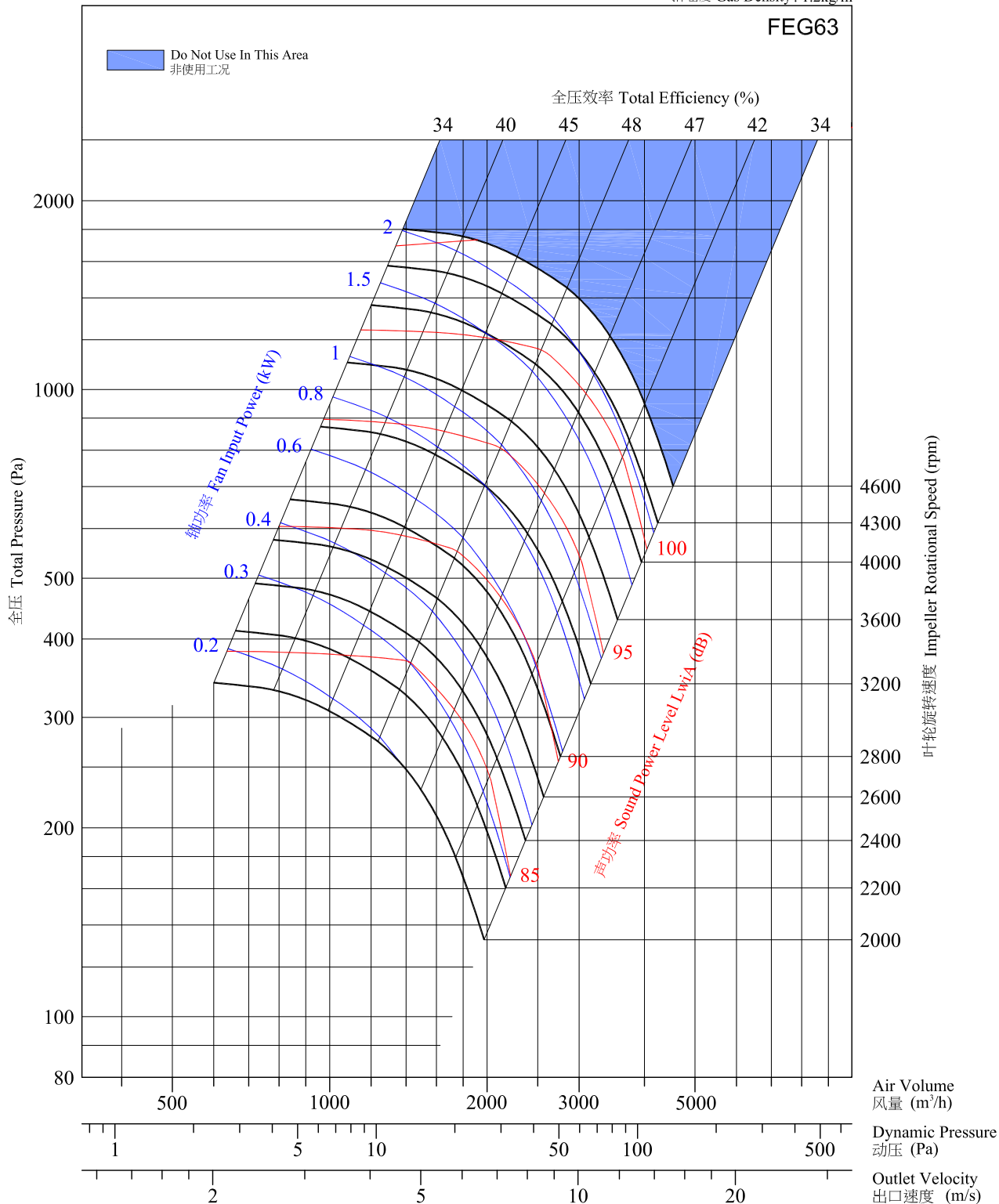


Performance certified is for installation type B - Free inlet, Ducted outlet. Power rating (kW) does not include transmission losses. Performance ratings do not include the effects of appurtenances (accessories). The A-weighted sound ratings shown have been calculated per AMCA International Standard 301. Values shown are for inlet L<sub>wiA</sub> sound power levels for installation Type B: free inlet, ducted outlet.

经认证的性能是B类安装-自由入口，管道出口。功率额定值(kW)不包括传输(动)损失。各项性能额定值不包括附属物(附件)的影响。所示A加权声音性能额定值已按AMCA International 标准301计算。所示值为安装类型B-自由入口，管道出口的声功率级(入口L<sub>wiA</sub>)。

# LDR 225

气体密度 Gas Density: 1.2kg/m<sup>3</sup>

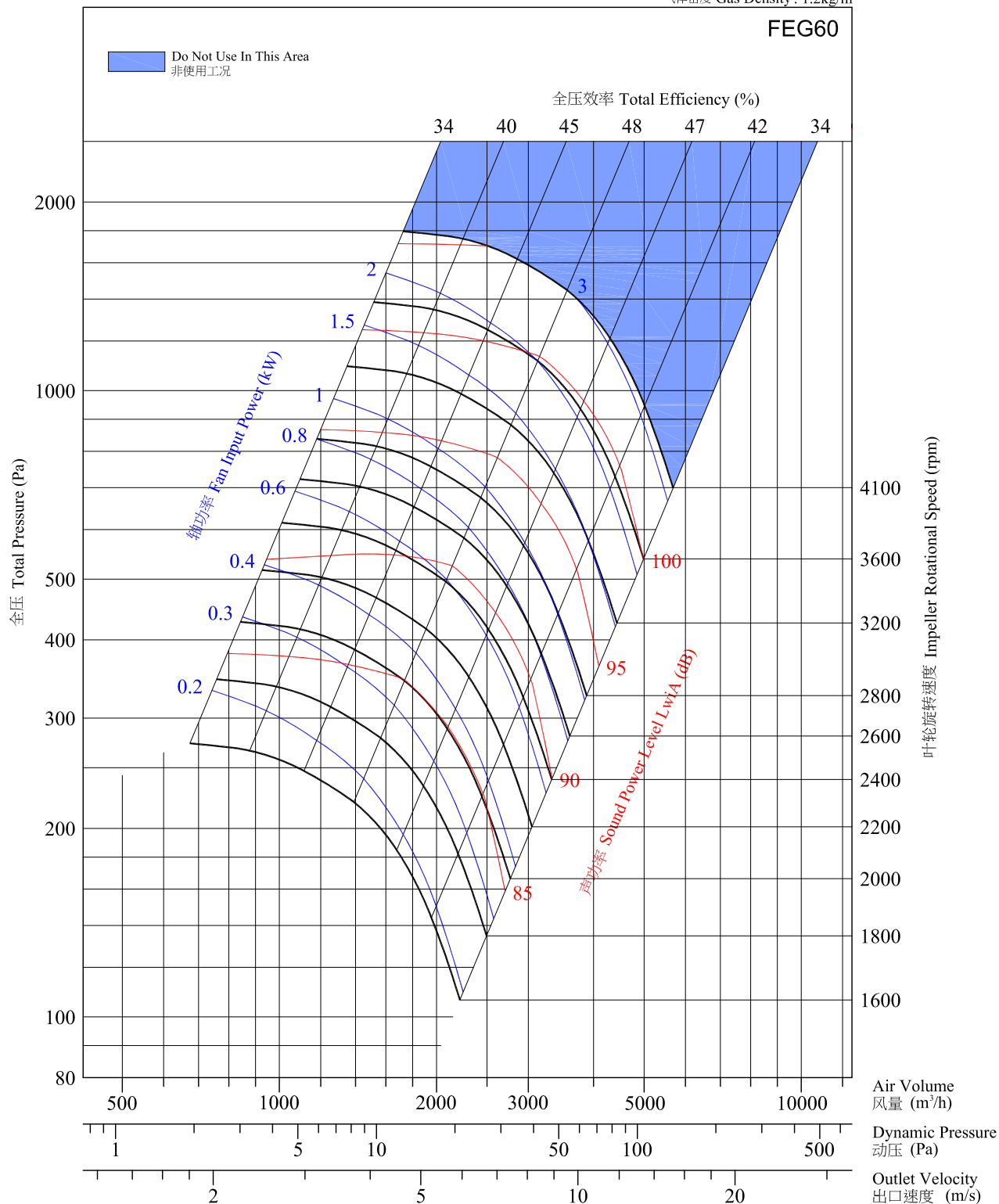


Performance certified is for installation type B - Free inlet, Ducted outlet. Power rating (kW) does not include transmission losses. Performance ratings do not include the effects of appurtenances (accessories). The A-weighted sound ratings shown have been calculated per AMCA International Standard 301. Values shown are for inlet L<sub>wiA</sub> sound power levels for installation Type B: free inlet, ducted outlet.

经认证的性能是B类安装-自由入口，管道出口。功率额定值(kW)不包括传输(动)损失。各项性能额定值不包括附属物(附件)的影响。所示A加权声音性能额定值已按AMCA International 标准301计算。所示值为安装类型B-自由入口，管道出口的声功率级(入口L<sub>wiA</sub>)。

# LDR 250

气体密度 Gas Density: 1.2kg/m<sup>3</sup>



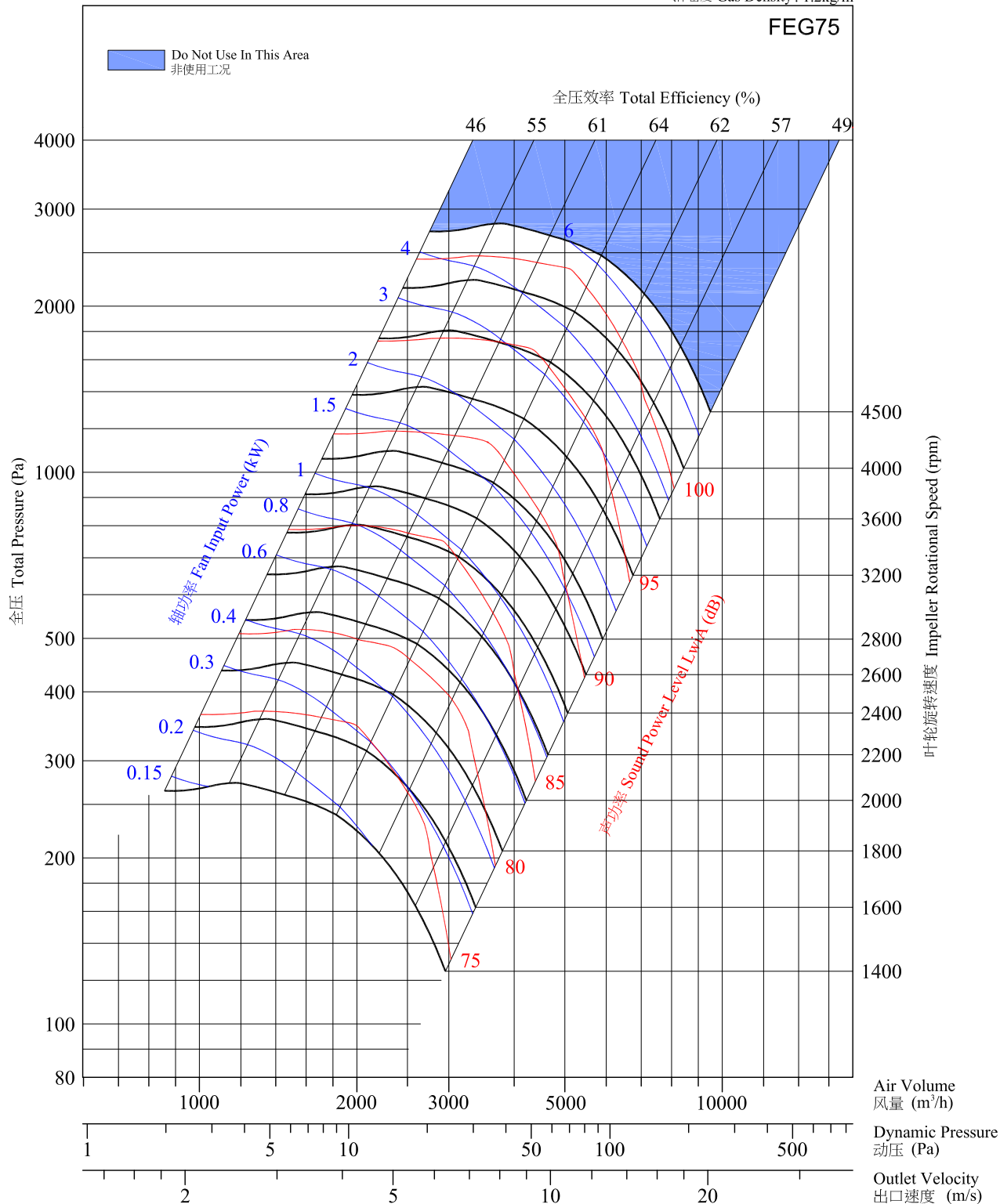
Performance certified is for installation type B - Free inlet, Ducted outlet. Power rating (kW) does not include transmission losses. Performance ratings do not include the effects of appurtenances (accessories). The A-weighted sound ratings shown have been calculated per AMCA International Standard 301. Values shown are for inlet L<sub>W</sub>iA sound power levels for installation Type B: free inlet, ducted outlet.

经认证的性能是B类安装-自由入口，管道出口。功率额定值(kW)不包括传输(动)损失。各项性能额定值不包括附属物(附件)的影响。所示A加权声音性能额定值已按AMCA International 标准301计算。所示值为安装类型B-自由入口，管道出口的声功率级(入口L<sub>W</sub>iA)。



# LDR 280

气体密度 Gas Density: 1.2kg/m<sup>3</sup>

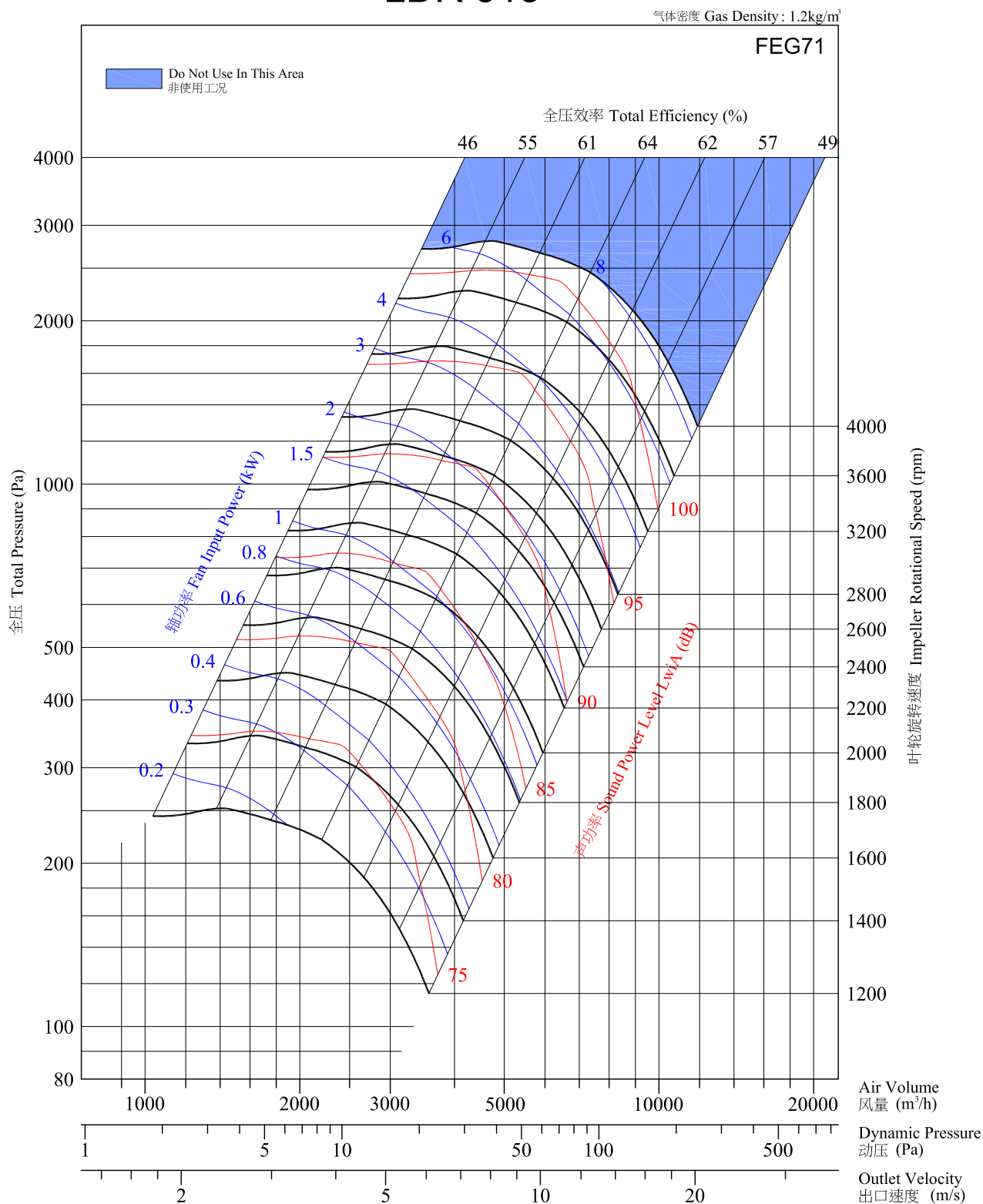


Performance certified is for installation type B - Free inlet, Ducted outlet. Power rating (kW) does not include transmission losses. Performance ratings do not include the effects of appurtenances (accessories). The A-weighted sound ratings shown have been calculated per AMCA International Standard 301. Values shown are for inlet L<sub>WA</sub> sound power levels for installation Type B: free inlet, ducted outlet.

经认证的性能是B类安装-自由入口，管道出口。功率额定值(kW)不包括传输(动)损失。各项性能额定值不包括附属物(附件)的影响。所示A加权声音性能额定值已按AMCA International 标准301计算。所示值为安装类型B-自由入口，管道出口的声功率级(入口L<sub>WA</sub>)。



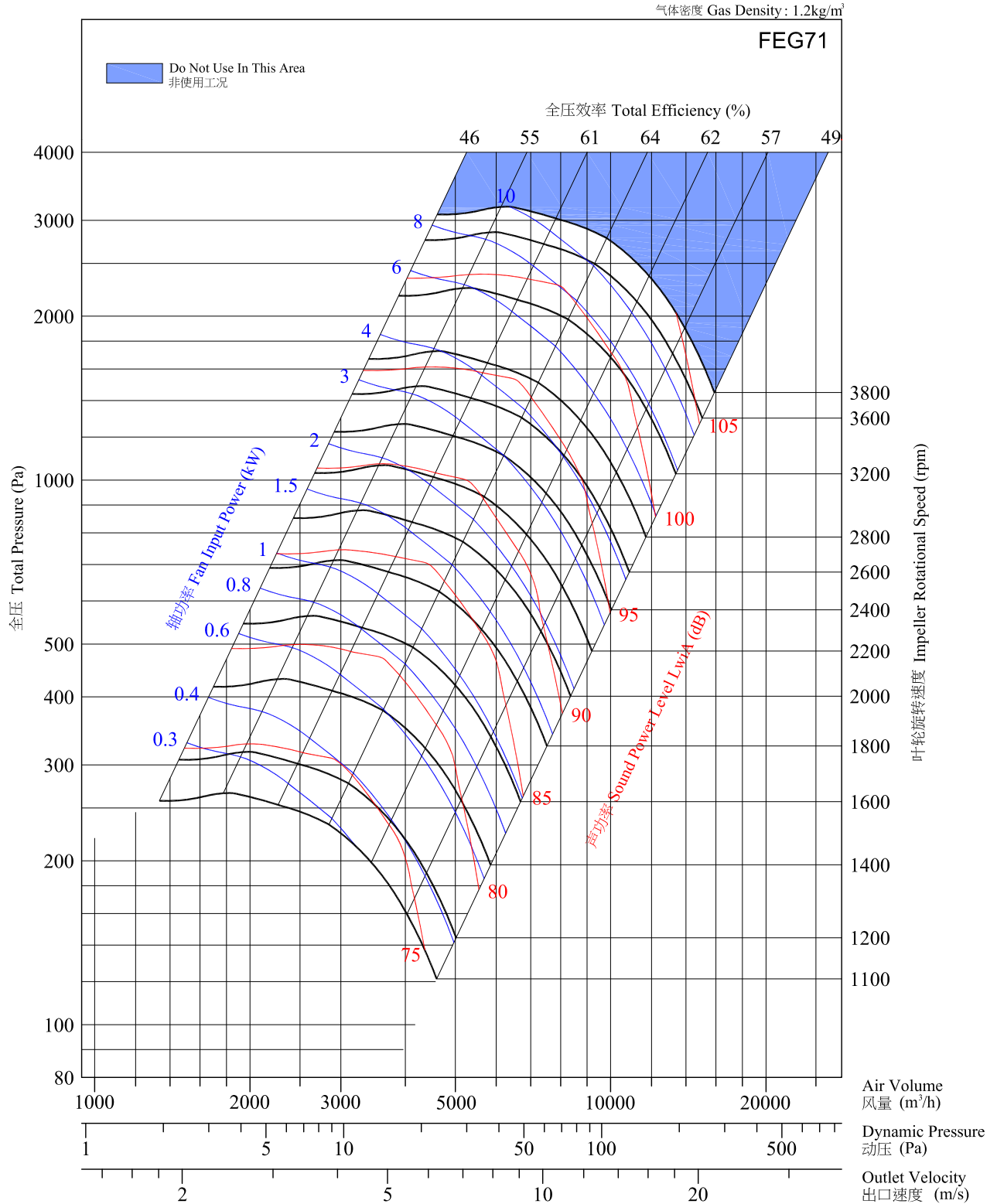
# LDR 315



Performance certified is for installation type B - Free inlet, Ducted outlet. Power rating (kW) does not include transmission losses. Performance ratings do not include the effects of appurtenances (accessories). The A-weighted sound ratings shown have been calculated per AMCA International Standard 301. Values shown are for inlet L<sub>WA</sub> sound power levels for installation Type B: free inlet, ducted outlet.

经认证的性能是B类安装-自由入口，管道出口。功率额定值(kW)不包括传输(动)损失。各项性能额定值不包括附属物(附件)的影响。所示A加权声音性能额定值已按AMCA International 标准301计算。所示值为安装类型B-自由入口，管道出口的声功率级(入口L<sub>WA</sub>)。

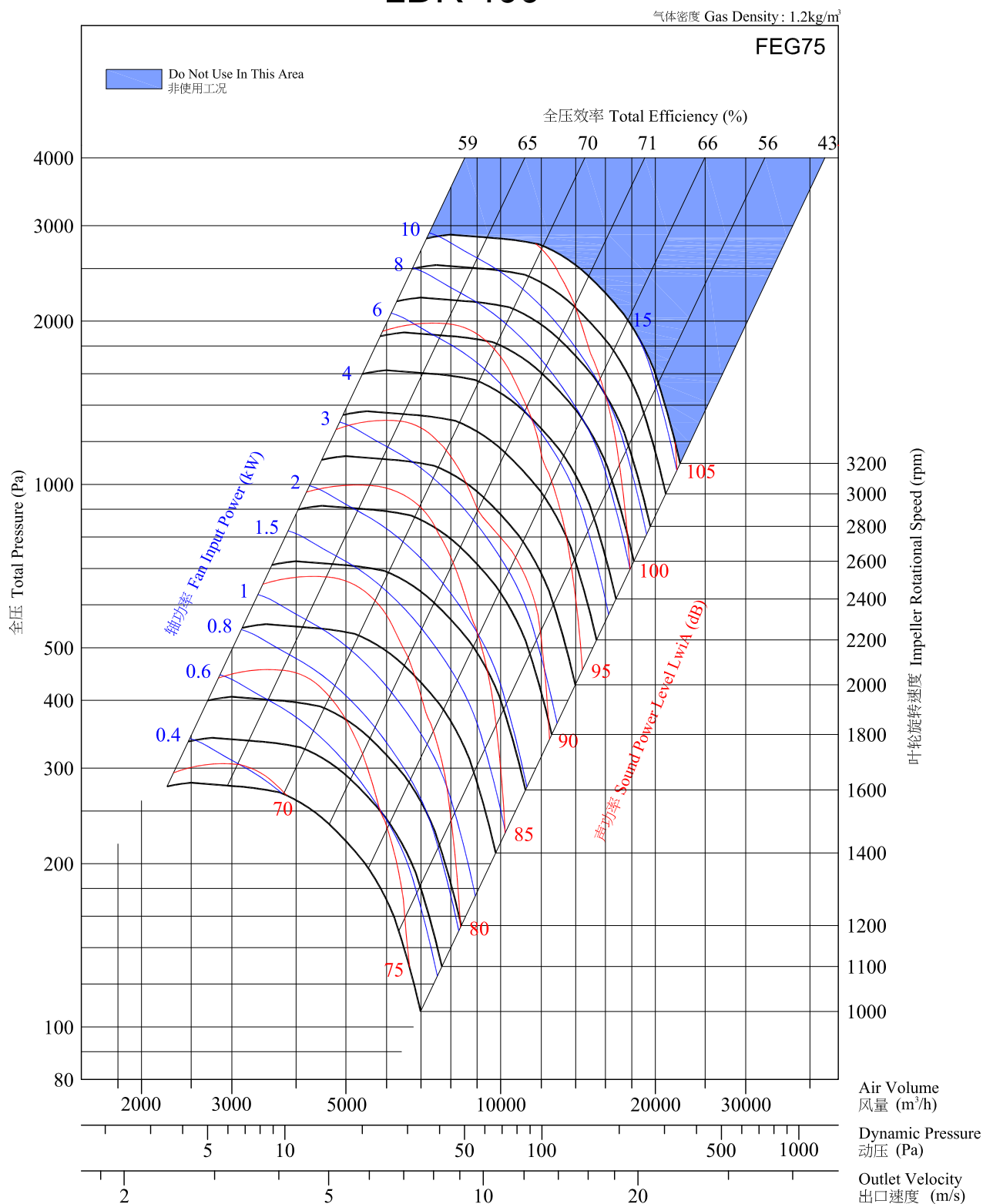
# LDR 355



Performance certified is for installation type B - Free inlet, Ducted outlet. Power rating (kW) does not include transmission losses. Performance ratings do not include the effects of appurtenances (accessories). The A-weighted sound ratings shown have been calculated per AMCA International Standard 301. Values shown are for inlet L<sub>WA</sub> sound power levels for installation Type B: free inlet, ducted outlet.

经认证的性能是B类安装-自由入口，管道出口。功率额定值(kW)不包括传输(动)损失。各项性能额定值不包括附属物(附件)的影响。所示A加权声音性能额定值已按AMCA International 标准301计算。所示值为安装类型B-自由入口，管道出口的声功率级(入口L<sub>WA</sub>)。

# LDR 400

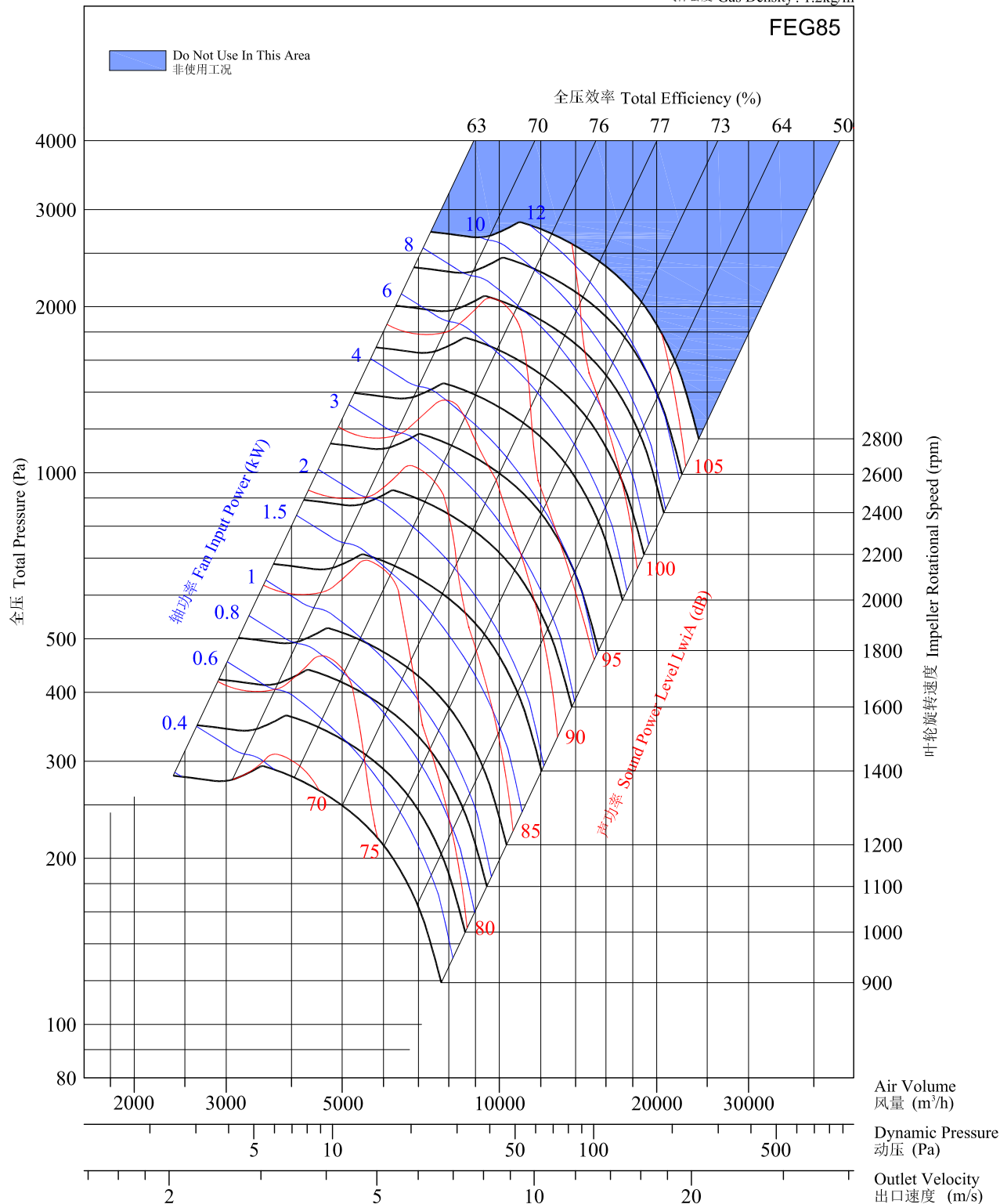


Performance certified is for installation type B - Free inlet, Ducted outlet. Power rating (kW) does not include transmission losses. Performance ratings do not include the effects of appurtenances (accessories). The A-weighted sound ratings shown have been calculated per AMCA International Standard 301. Values shown are for inlet L<sub>W</sub>A sound power levels for installation Type B: free inlet, ducted outlet.

经认证的性能是B类安装-自由入口，管道出口。功率额定值(kW)不包括传输(动)损失。各项性能额定值不包括附属物(附件)的影响。所示A加权声音性能额定值已按AMCA International 标准301计算。所示值为安装类型B-自由入口，管道出口的声功率级(入口L<sub>W</sub>A)。

# LDR 450

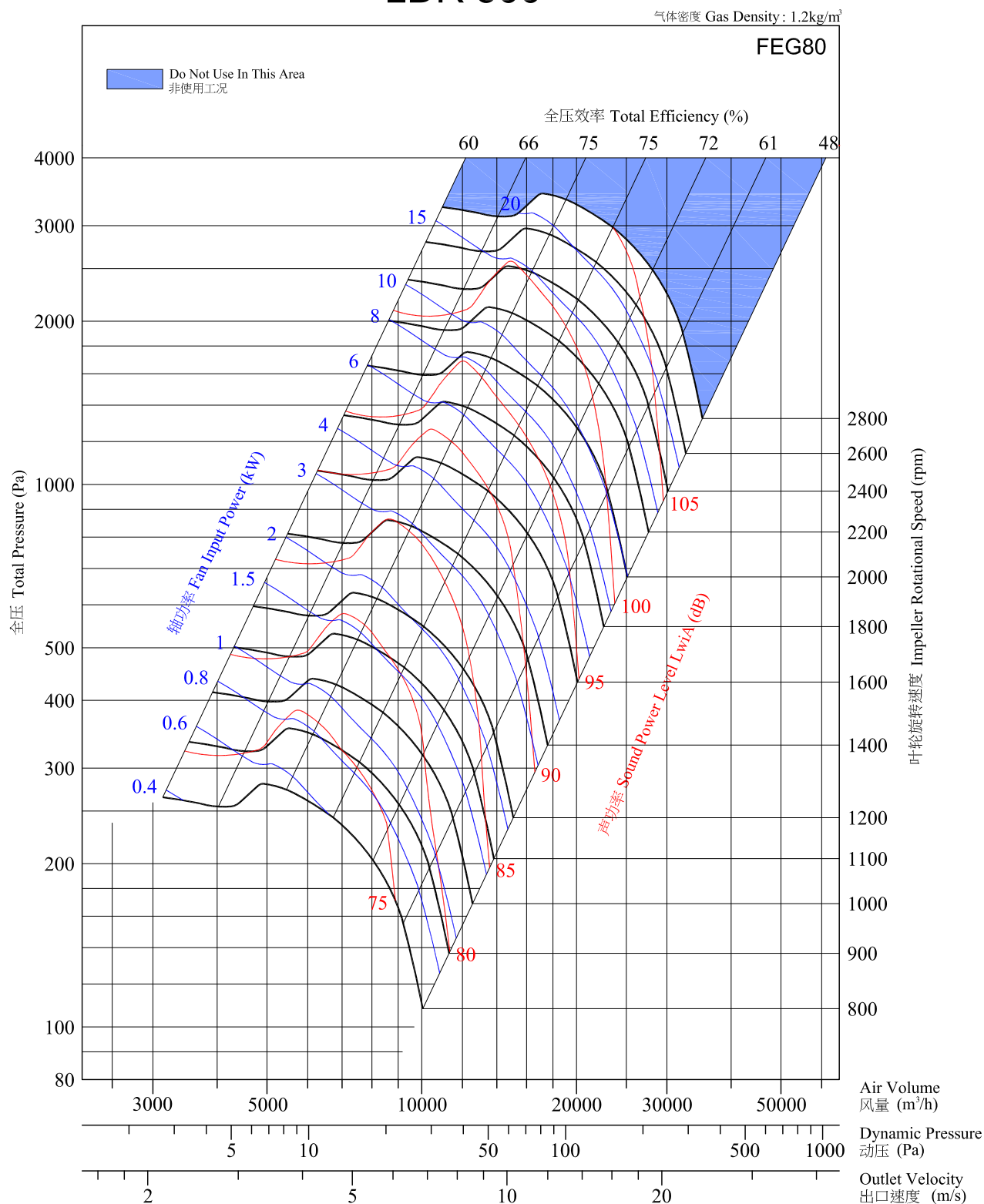
气体密度 Gas Density: 1.2kg/m<sup>3</sup>



Performance certified is for installation type B - Free inlet, Ducted outlet. Power rating (kW) does not include transmission losses. Performance ratings do not include the effects of appurtenances (accessories). The A-weighted sound ratings shown have been calculated per AMCA International Standard 301. Values shown are for inlet L<sub>W</sub>A sound power levels for installation Type B: free inlet, ducted outlet.

经认证的性能是B类安装-自由入口，管道出口。功率额定值(kW)不包括传输(动)损失。各项性能额定值不包括附属物(附件)的影响。所示A加权声音性能额定值已按AMCA International 标准301计算。所示值为安装类型B-自由入口，管道出口的声功率级(入口L<sub>W</sub>A)。

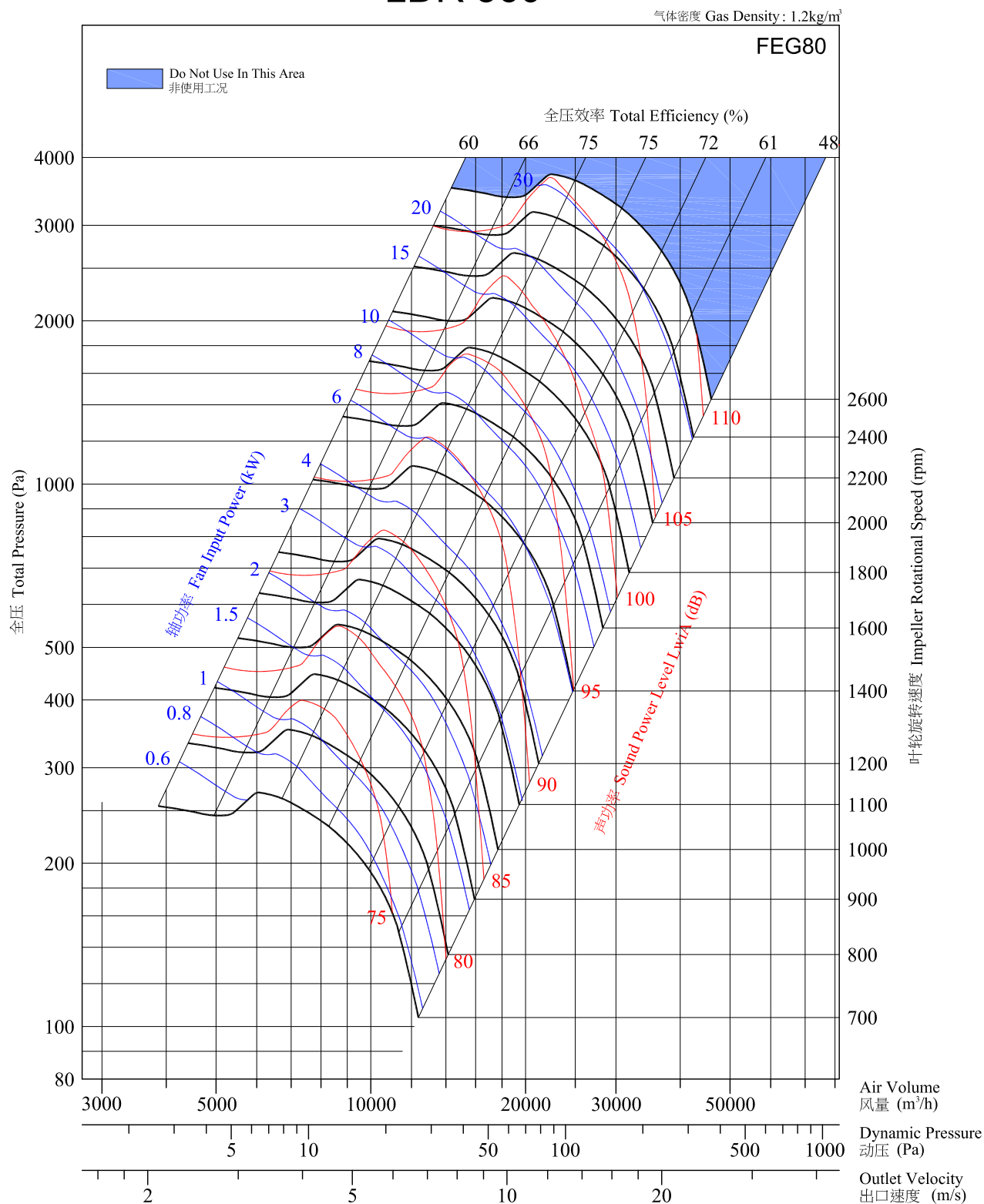
# LDR 500



Performance certified is for installation type B - Free inlet, Ducted outlet. Power rating (kW) does not include transmission losses. Performance ratings do not include the effects of appurtenances (accessories). The A-weighted sound ratings shown have been calculated per AMCA International Standard 301. Values shown are for inlet L<sub>WA</sub> sound power levels for installation Type B: free inlet, ducted outlet.

经认证的性能是B类安装-自由入口，管道出口。功率额定值(kW)不包括传输(动)损失。各项性能额定值不包括附属物(附件)的影响。所示A加权声音性能额定值已按AMCA International 标准301计算。所示值为安装类型B-自由入口，管道出口的声功率级(入口L<sub>WA</sub>)。

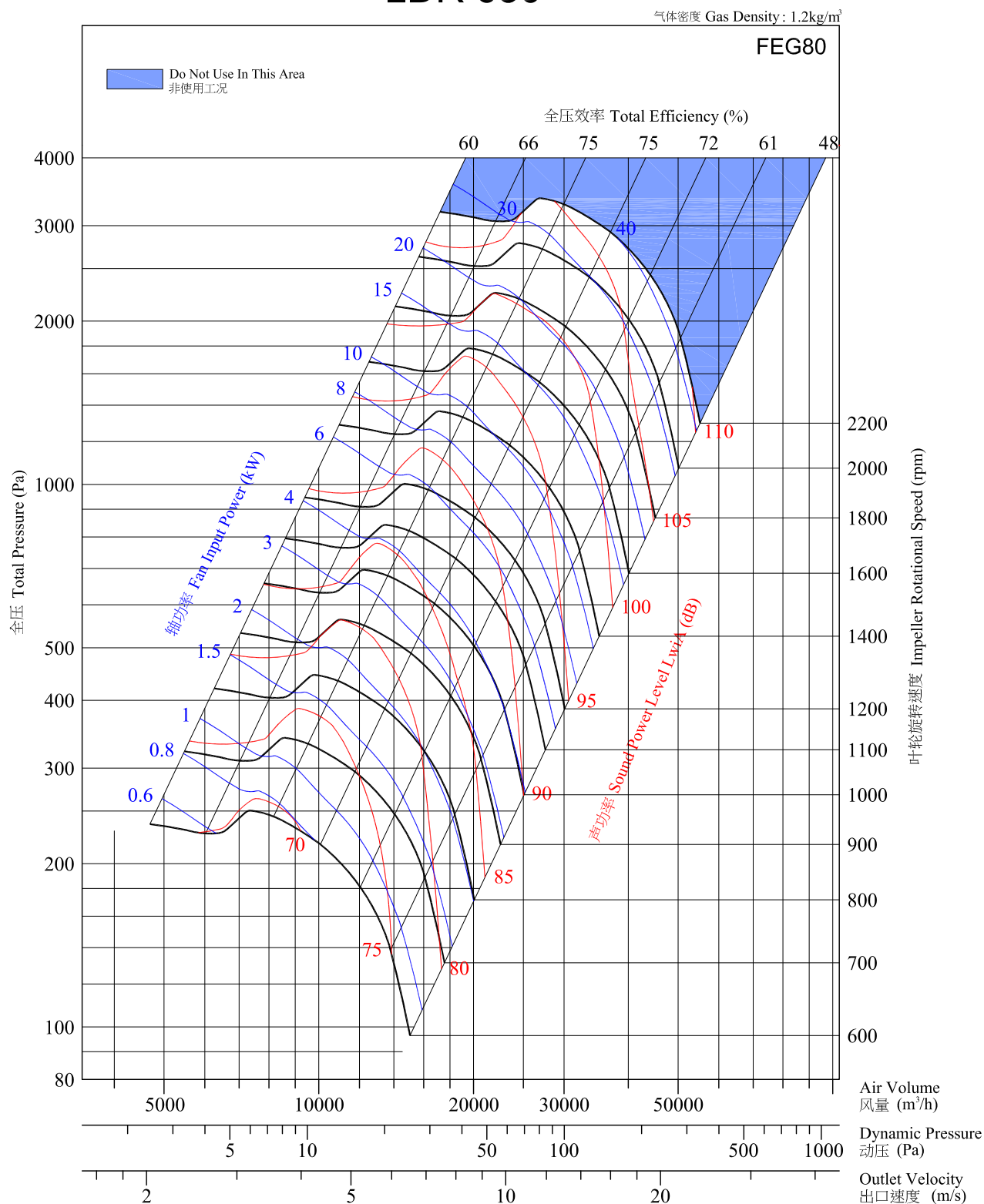
# LDR 560



Performance certified is for installation type B - Free inlet, Ducted outlet. Power rating (kW) does not include transmission losses. Performance ratings do not include the effects of appurtenances (accessories). The A-weighted sound ratings shown have been calculated per AMCA International Standard 301. Values shown are for inlet L<sub>WA</sub> sound power levels for installation Type B: free inlet, ducted outlet.

经认证的性能是B类安装-自由入口，管道出口。功率额定值(kW)不包括传输(动)损失。各项性能额定值不包括附属物(附件)的影响。所示A加权声音性能额定值已按AMCA International 标准301计算。所示值为安装类型B-自由入口，管道出口的声功率级(入口L<sub>WA</sub>)。

# LDR 630

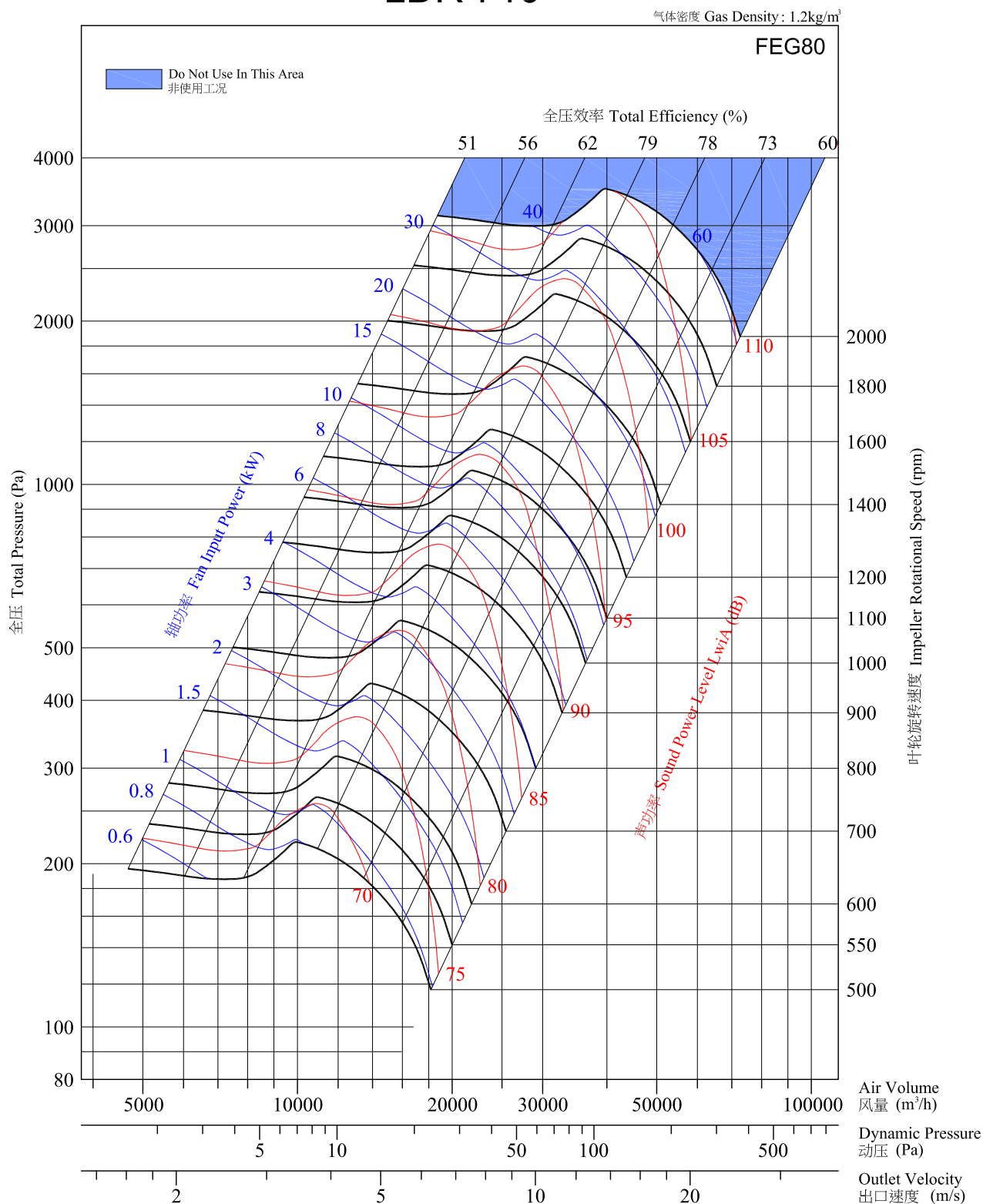


Performance certified is for installation type B - Free inlet, Ducted outlet. Power rating (kW) does not include transmission losses. Performance ratings do not include the effects of appurtenances (accessories). The A-weighted sound ratings shown have been calculated per AMCA International Standard 301. Values shown are for inlet L<sub>WA</sub> sound power levels for installation Type B: free inlet, ducted outlet.

经认证的性能是B类安装-自由入口，管道出口。功率额定值(kW)不包括传输(动)损失。各项性能额定值不包括附属物(附件)的影响。所示A加权声音性能额定值已按AMCA International 标准301计算。所示值为安装类型B-自由入口，管道出口的声功率级(入口L<sub>WA</sub>)。



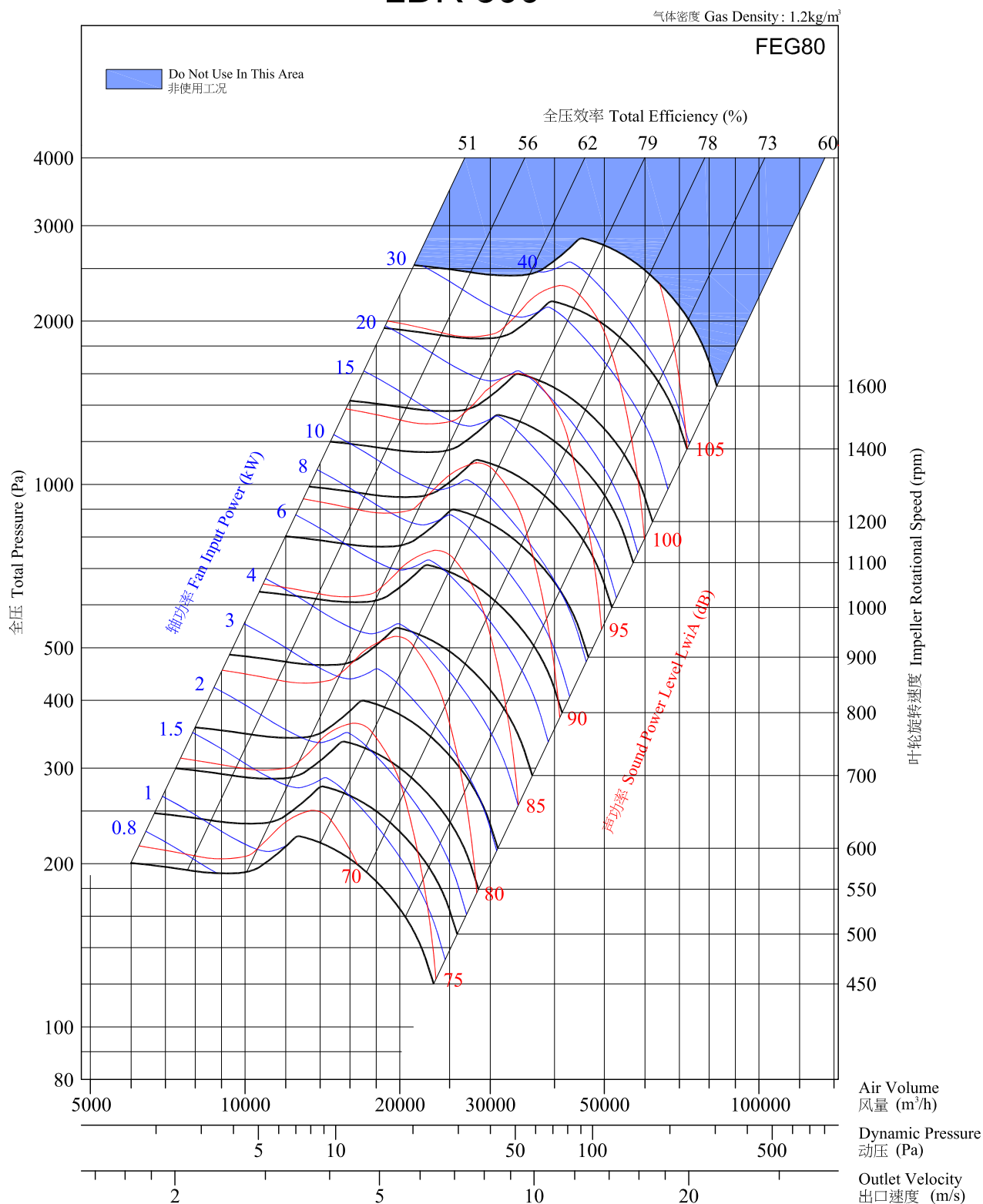
# LDR 710



Performance certified is for installation type B - Free inlet, Ducted outlet. Power rating (kW) does not include transmission losses. Performance ratings do not include the effects of appurtenances (accessories). The A-weighted sound ratings shown have been calculated per AMCA International Standard 301. Values shown are for inlet L<sub>W</sub>A sound power levels for installation Type B: free inlet, ducted outlet.

经认证的性能是B类安装-自由入口，管道出口。功率额定值(kW)不包括传输(动)损失。各项性能额定值不包括附属物(附件)的影响。所示A加权声音性能额定值已按AMCA International 标准301计算。所示值为安装类型B-自由入口，管道出口的声功率级(入口L<sub>W</sub>A)。

# LDR 800

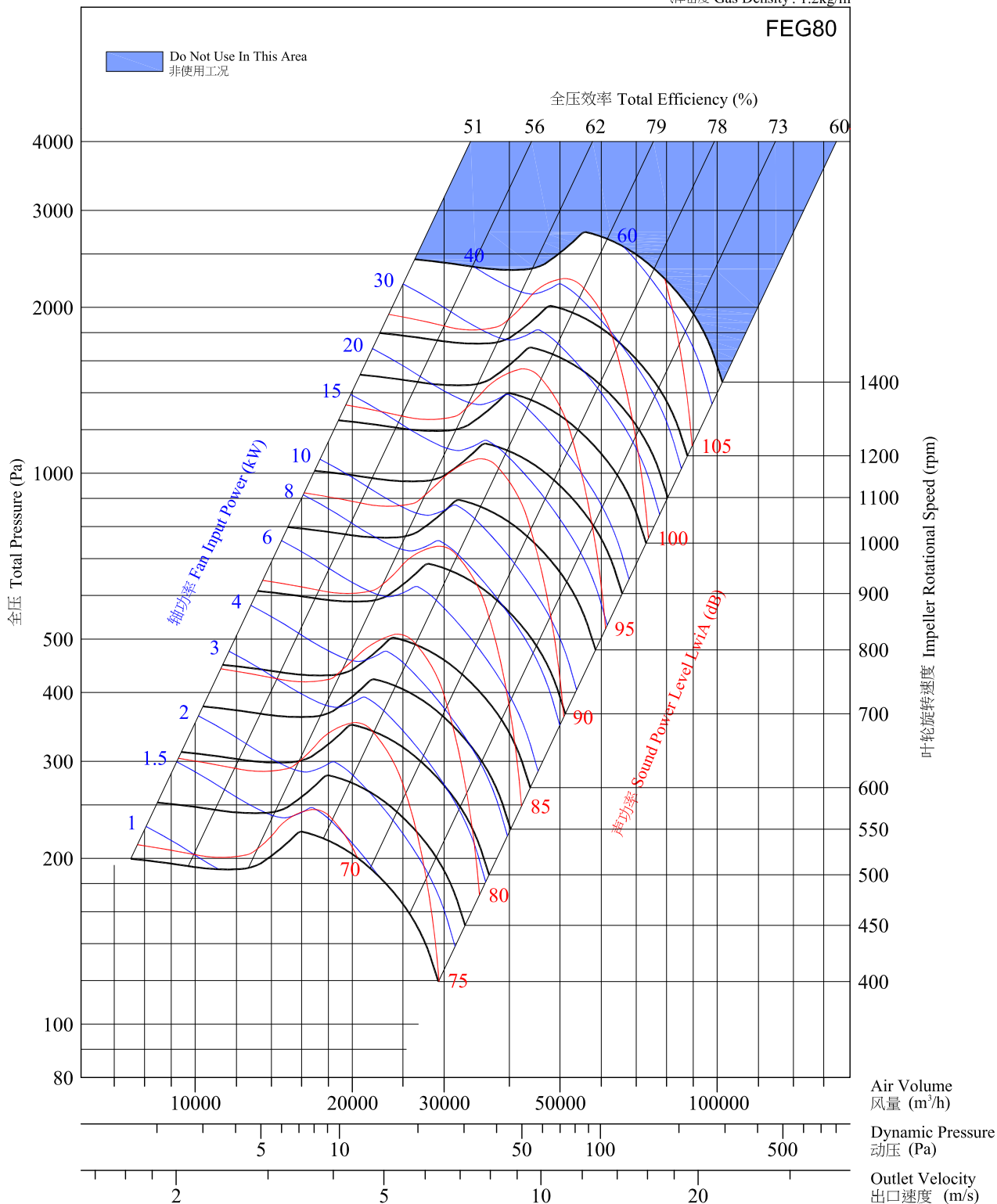


Performance certified is for installation type B - Free inlet, Ducted outlet. Power rating (kW) does not include transmission losses. Performance ratings do not include the effects of appurtenances (accessories). The A-weighted sound ratings shown have been calculated per AMCA International Standard 301. Values shown are for inlet L<sub>wiA</sub> sound power levels for installation Type B: free inlet, ducted outlet.

经认证的性能是B类安装-自由入口，管道出口。功率额定值(kW)不包括传输(动)损失。各项性能额定值不包括附属物(附件)的影响。所示A加权声音性能额定值已按AMCA International 标准301计算。所示值为安装类型B-自由入口，管道出口的声功率级(入口L<sub>wiA</sub>)。

# LDR 900

气体密度 Gas Density: 1.2kg/m<sup>3</sup>

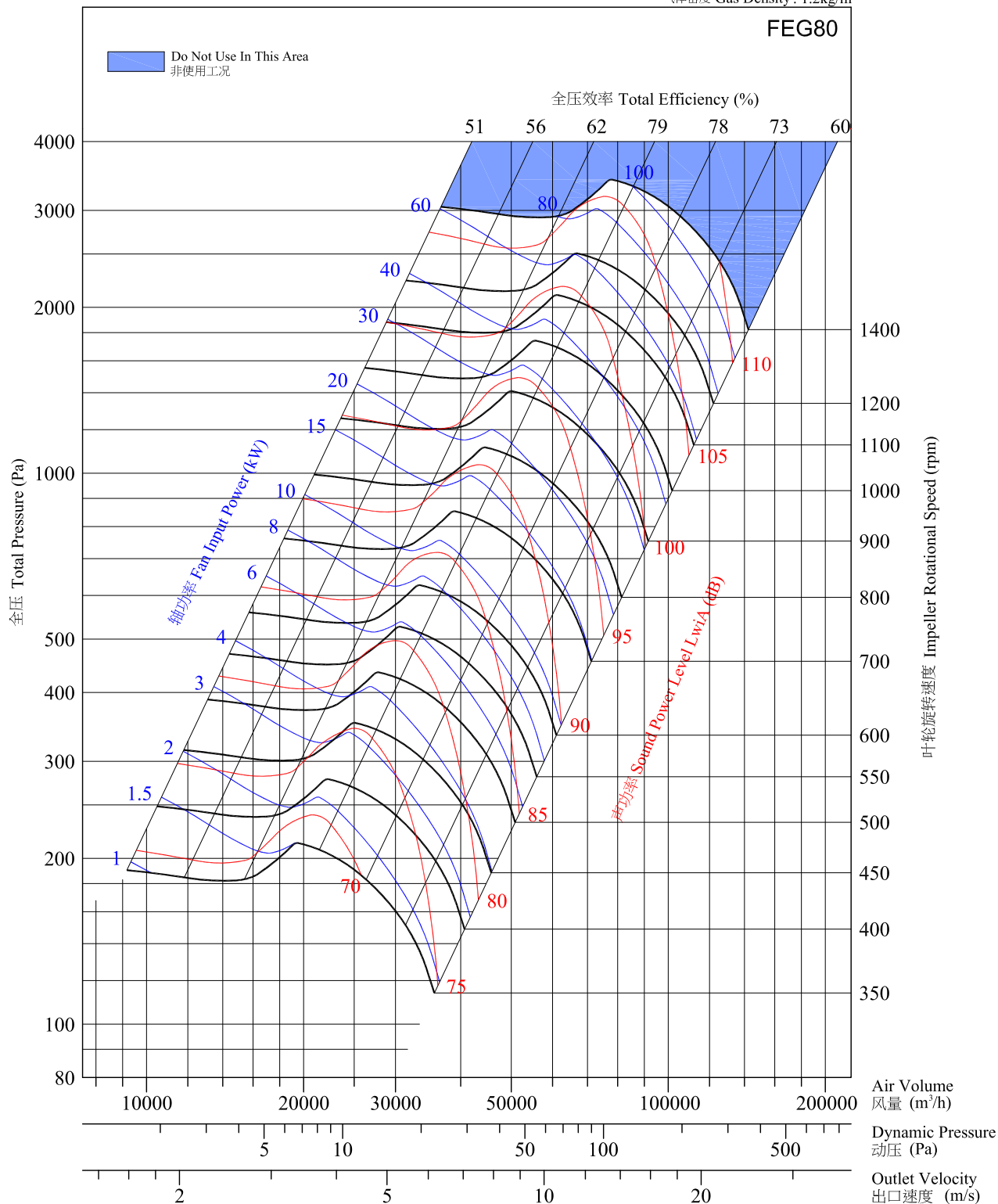


Performance certified is for installation type B - Free inlet, Ducted outlet. Power rating (kW) does not include transmission losses. Performance ratings do not include the effects of appurtenances (accessories). The A-weighted sound ratings shown have been calculated per AMCA International Standard 301. Values shown are for inlet L<sub>WA</sub> sound power levels for installation Type B: free inlet, ducted outlet.

经认证的性能是B类安装-自由入口，管道出口。功率额定值(kW)不包括传输(动)损失。各项性能额定值不包括附属物(附件)的影响。所示A加权声性能额定值已按AMCA International 标准301计算。所示值为安装类型B-自由入口，管道出口的声功率级(入口L<sub>WA</sub>)。

# LDR 1000

气体密度 Gas Density: 1.2kg/m<sup>3</sup>



Performance certified is for installation type B - Free inlet, Ducted outlet. Power rating (kW) does not include transmission losses. Performance ratings do not include the effects of appurtenances (accessories). The A-weighted sound ratings shown have been calculated per AMCA International Standard 301. Values shown are for inlet L<sub>W</sub>A sound power levels for installation Type B: free inlet, ducted outlet.

经认证的性能是B类安装-自由入口，管道出口。功率额定值(kW)不包括传输(动)损失。各项性能额定值不包括附属物(附件)的影响。所示A加权声性能额定值已按AMCA International 标准301计算。所示值为安装类型B-自由入口，管道出口的声功率级(入口L<sub>W</sub>A)。