

TECHNOLOGY MEETS AESTHETICS



Certified Ratings:

Robertson Thermovent FZE certifies that the model RTV-STD-100 shown herein is licensed to bear the AMCA seal. The ratings shown are based on test and procedures performed in accordance with AMCA Publication 511 and comply with the requirements of the AMCA Certified Ratings Program. The AMCA Certified Ratings Seal applies to Air Performance ratings.

STANDARD LOUVER 100



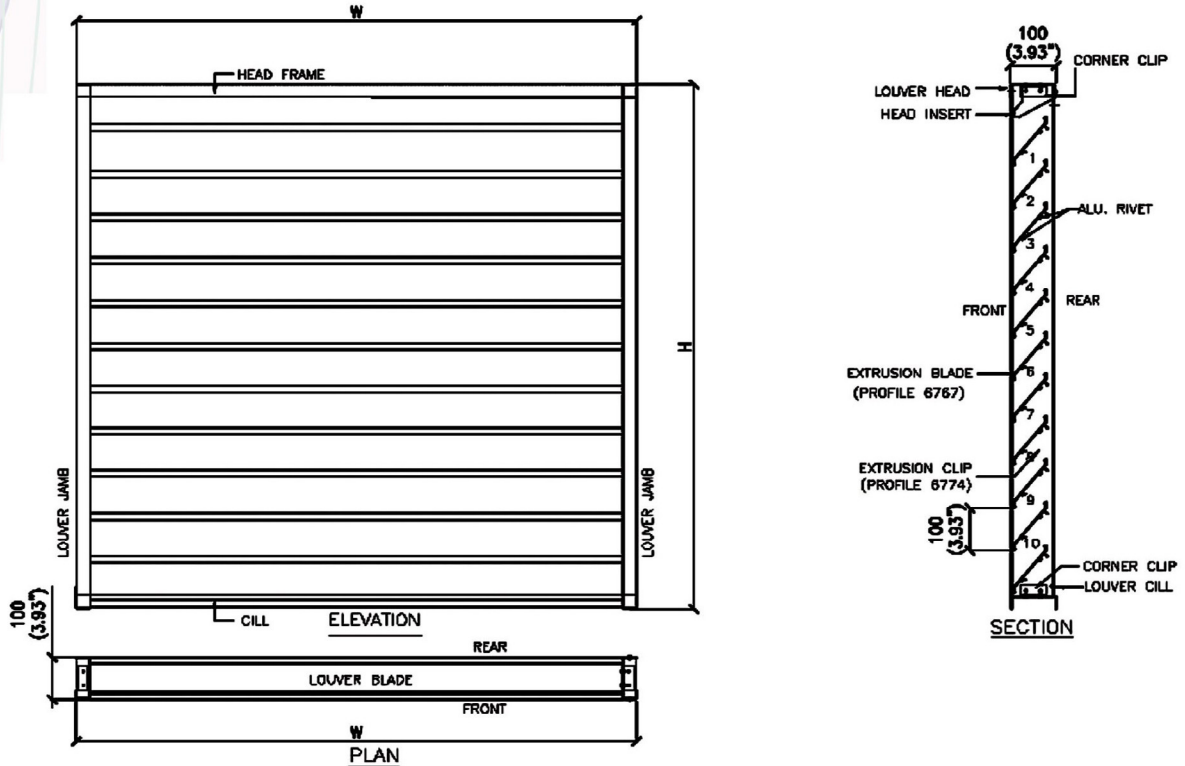
ROBERTSON *THERMOVENT* FZE
ACOUSTIC AND VENTILATION SYSTEMS



Certified Ratings:

Robertson Thermovent FZE certifies that the model RTV-STD-100 shown herein is licensed to bear the AMCA seal. The ratings shown are based on test and procedures performed in accordance with AMCA Publication 511 and comply with the requirements of the AMCA Certified Ratings Program. The AMCA Certified Ratings Seal applies to Air Performance ratings.

Model : RTV -STD-100 STD LOUVER 100 100mm Deep. Alu. Extruded Blades



Application:

The RTV-STD-100 is widely specified for Architectural Application such as building facades, exterior air intake openings and weather protection of spaces. These device are also usefully employed for Industrial Applications such as factories, rolling mill, wire drawing mills, glass factories. Mechanical operable blades are available as option.

FREE AREA (ft²)

Width (Inches)

Height (Inches)	12	18	24	30	36	42	48	54	60	66	72	78	84	90	96	102	108	114	120
12	0.41	0.62	0.82	1.03	1.23	1.44	1.64	1.85	2.05	2.26	2.46	2.67	2.87	3.08	3.28	3.49	3.69	3.90	4.10
18	0.62	0.92	1.23	1.54	1.85	2.15	2.46	2.77	3.08	3.38	3.69	4.00	4.31	4.61	4.92	5.23	5.54	5.84	6.15
24	0.82	1.23	1.64	2.05	2.46	2.87	3.28	3.69	4.10	4.51	4.92	5.33	5.74	6.15	6.56	6.97	7.38	7.79	8.20
30	1.03	1.54	2.05	2.56	3.08	3.59	4.10	4.61	5.13	5.64	6.15	6.66	7.18	7.69	8.20	8.71	9.23	9.74	10.25
36	1.23	1.85	2.46	3.08	3.69	4.31	4.92	5.54	6.15	6.77	7.38	8.00	8.61	9.23	9.84	10.46	11.07	11.69	12.30
42	1.44	2.15	2.87	3.59	4.31	5.02	5.74	6.46	7.18	7.89	8.61	9.33	10.05	10.76	11.48	12.20	12.92	13.63	14.35
48	1.64	2.46	3.28	4.10	4.92	5.74	6.56	7.38	8.20	9.02	9.84	10.66	11.48	12.30	13.12	13.94	14.76	15.58	16.40
54	1.85	2.77	3.69	4.61	5.54	6.46	7.38	8.30	9.23	10.15	11.07	11.99	12.92	13.84	14.76	15.68	16.61	17.53	18.45
60	2.05	3.08	4.10	5.13	6.15	7.18	8.20	9.23	10.25	11.28	12.30	13.33	14.35	15.38	16.40	17.43	18.45	19.48	20.50
66	2.26	3.38	4.51	5.64	6.77	7.89	9.02	10.15	11.28	12.40	13.53	14.66	15.79	16.91	18.04	19.17	20.30	21.42	22.55
72	2.46	3.69	4.92	6.15	7.38	8.61	9.84	11.07	12.30	13.53	14.76	15.99	17.22	18.45	19.68	20.91	22.14	23.37	24.60
78	2.67	4.00	5.33	6.66	8.00	9.33	10.66	11.99	13.33	14.66	15.99	17.32	18.66	19.99	21.32	22.65	23.99	25.32	26.65
84	2.87	4.31	5.74	7.18	8.61	10.05	11.48	12.92	14.35	15.79	17.22	18.66	20.09	21.53	22.96	24.40	25.83	27.27	28.70
90	3.08	4.61	6.15	7.69	9.23	10.76	12.30	13.84	15.38	16.91	18.45	19.99	21.53	23.06	24.60	26.14	27.68	29.21	30.75
96	3.28	4.92	6.56	8.20	9.84	11.48	13.12	14.76	16.40	18.04	19.68	21.32	22.96	24.60	26.24	27.88	29.52	31.16	32.80
102	3.49	5.23	6.97	8.71	10.46	12.20	13.94	15.68	17.43	19.17	20.91	22.65	24.40	26.14	27.88	29.62	31.37	33.11	34.85
108	3.69	5.54	7.38	9.23	11.07	12.92	14.76	16.61	18.45	20.30	22.14	23.99	25.83	27.68	29.52	31.37	33.21	35.06	36.90
114	3.90	5.84	7.79	9.74	11.69	13.63	15.58	17.53	19.48	21.42	23.37	25.32	27.27	29.21	31.16	33.11	35.06	37.00	38.95
120	4.10	6.15	8.20	10.25	12.30	14.35	16.40	18.45	20.50	22.55	24.60	26.65	28.70	30.75	32.80	34.85	36.90	38.95	41.00

**Model : RTV -STD-100
STD LOUVER 100**

100mm Deep. Alu. Extruded Blades



Certified Ratings:

Robertson Thermovent FZE certifies that the model RTV-STD-100 shown herein is licensed to bear the AMCA seal. The ratings shown are based on test and procedures performed in accordance with AMCA Publication 511 and comply with the requirements of the AMCA Certified Ratings Program. The AMCA Certified Ratings Seal applies to Air Performance ratings.

CONFIGURATION :

Supplied in modular assembly or knockdown form for rapid site installation.

MATERIALS :

Mill Finish Aluminium Extrusion

FRAMES :

100 mm Deep

BLADES :

Aluminium Extruded blades

SCREEN :

Birdmesh : Crimped Aluminium

OPTIONAL :

- PVDF (KYNAR)
- Powder Coated
- Super Durable PPC
- Anodized
- Epoxy Painted
- Mill Finish

OPTIONAL :

- Operable blades

Ratings:

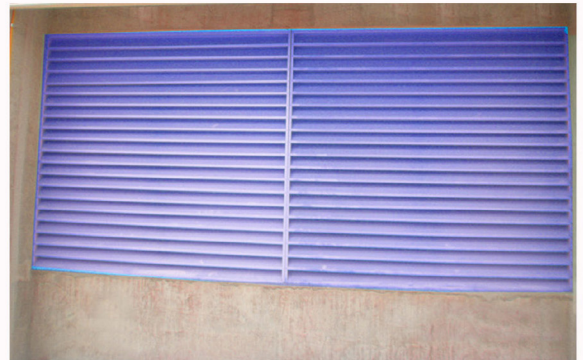
Free Area : [48" x 48" (1220 x 1220mm)] - 6.56 ft²

Performance at beginning point

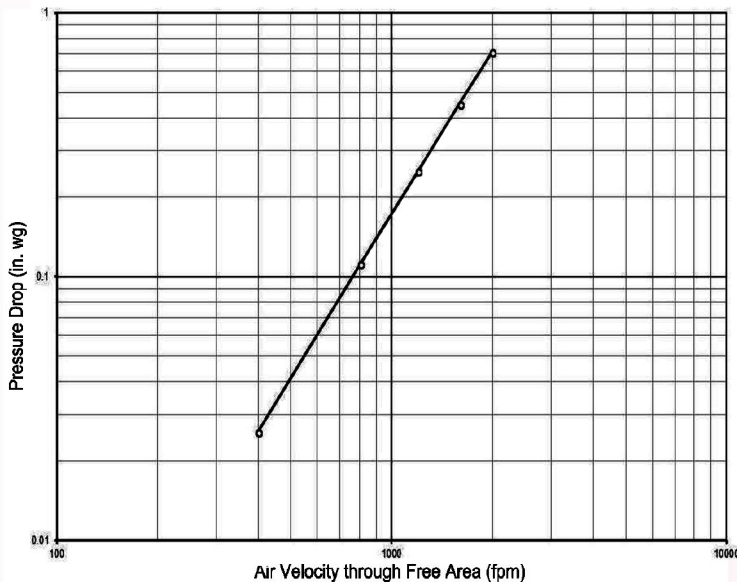
Free Area Velocity: 399 fpm

Air Volume delivered : 2520 cfm

Pressure Loss : 0.026 in wg

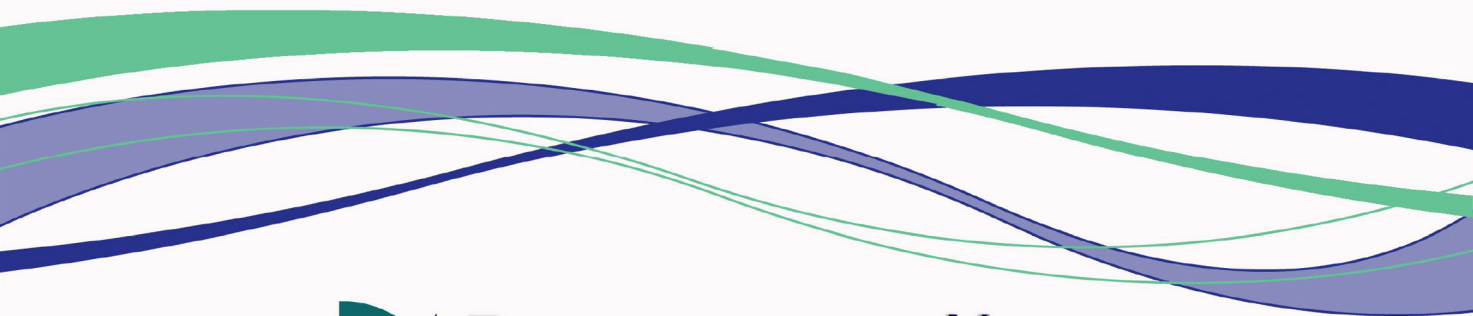


Pressure Loss



Intake

Tested to AMCA 500-L - Figure 5.5 at standard air density.



 **ROBERTSON THERMOVENT**

Robertson Thermovent FZE
P.O.Box 262148, Dubai - U.A.E
Tel. : +9714 - 880 9300
Fax. : +9714 - 880 9039
E-mail info@robertsonvent.com
www.robertsonvent.com

