

TECHNOLOGY MEETS AESTHETICS



### Certified Ratings:

Robertson Thermovent FZE certifies that the model RTV-STD-100 shown herein is licensed to bear the AMCA seal. The ratings shown are based on test and procedures performed in accordance with AMCA Publication 511 and comply with the requirements of the AMCA Certified Ratings Program. The AMCA Certified Ratings Seal applies to Air Performance ratings.

## STANDARD LOUVER 100

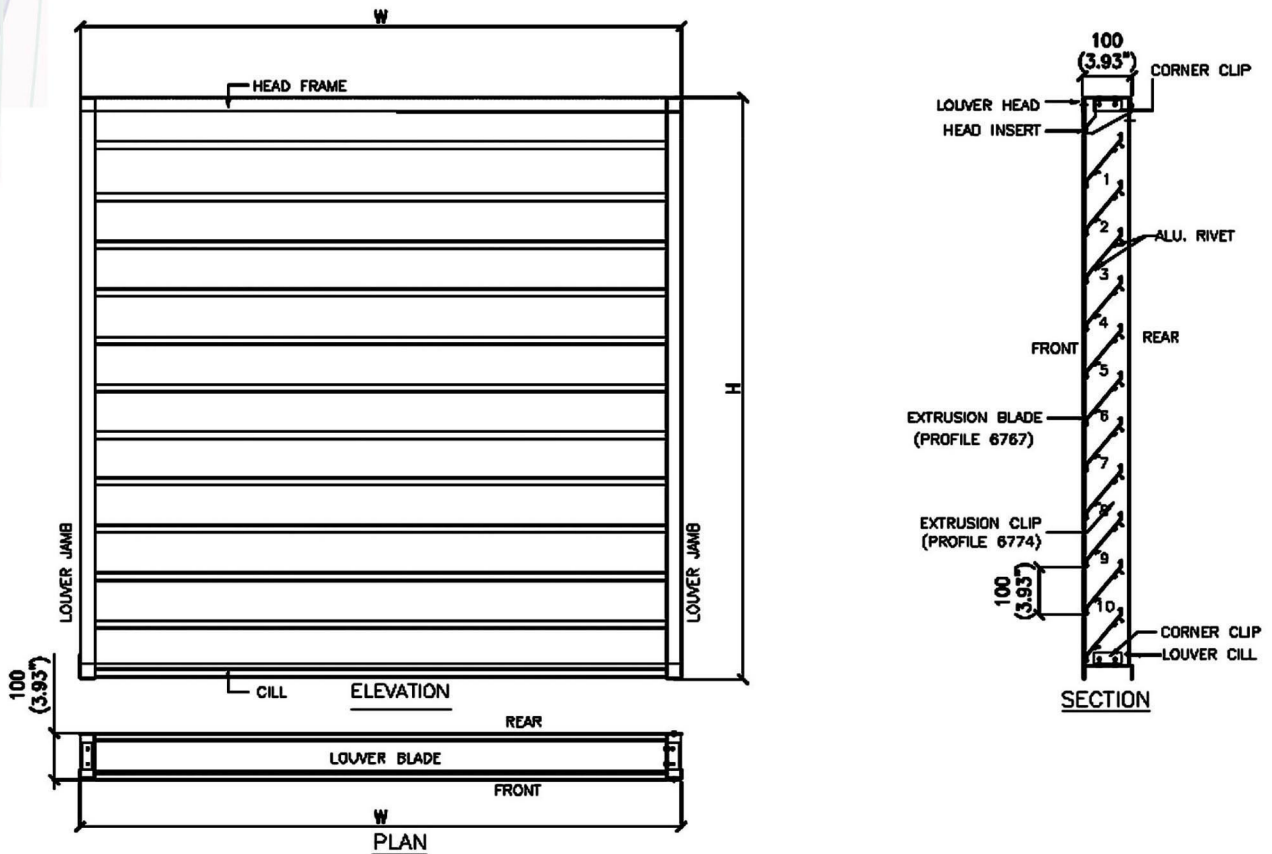


**ROBERTSON *THERMOVENT* FZE**  
ACOUSTIC AND VENTILATION SYSTEMS



**Certified Ratings:**

Robertson Thermovent FZE certifies that the model RTV-STD-100 shown herein is licensed to bear the AMCA seal. The ratings shown are based on test and procedures performed in accordance with AMCA Publication 511 and comply with the requirements of the AMCA Certified Ratings Program. The AMCA Certified Ratings Seal applies to Air Performance ratings.



**Application:**

The RTV-STD-100 is widely specified for Architectural Application such as building facades, exterior air intake openings and weather protection of spaces. These device are also usefully employed for Industrial Applications such as factories, rolling mill, wire drawing mills, glass factories. Mechanical operable blades are available as option.

**FREE AREA (ft<sup>2</sup>)**

Width (Inches)

	12	18	24	30	36	42	48	54	60	66	72	78	84	90	96	102	108	114	120
	9.688	15.688	21.688	27.688	33.688	39.688	45.688	51.688	57.688	63.688	69.688	75.688	81.688	87.688	93.688	99.688	105.688	111.688	117.688
12	0.36	0.58	0.80	1.03	1.25	1.47	1.69	1.91	2.14	2.36	2.58	2.80	3.02	3.25	3.47	3.69	3.91	4.13	4.36
18	0.48	0.78	1.08	1.38	1.67	1.97	2.27	2.57	2.87	3.16	3.46	3.76	4.06	4.36	4.65	4.95	5.25	5.55	5.85
24	0.60	0.98	1.35	1.73	2.10	2.47	2.85	3.22	3.60	3.97	4.34	4.72	5.09	5.47	5.84	6.21	6.59	6.96	7.34
30	0.85	1.37	1.90	2.43	2.95	3.48	4.00	4.53	5.06	5.58	6.11	6.63	7.16	7.68	8.21	8.74	9.26	9.79	10.31
36	0.97	1.57	2.17	2.78	3.38	3.98	4.58	5.18	5.79	6.39	6.99	7.59	8.19	8.79	9.40	10.00	10.60	11.20	11.80
42	1.22	1.97	2.72	3.48	4.23	4.98	5.74	6.49	7.24	8.00	8.75	9.51	10.26	11.01	11.77	12.52	13.27	14.03	14.78
48	1.34	2.17	3.00	3.83	4.66	5.49	6.32	7.15	7.97	8.80	9.63	10.46	11.29	12.12	12.95	13.78	14.61	15.44	16.27
54	1.46	2.37	3.27	4.18	5.08	5.99	6.89	7.80	8.70	9.61	10.52	11.42	12.33	13.23	14.14	15.04	15.95	16.85	17.76
60	1.58	2.57	3.55	4.53	5.51	6.49	7.47	8.45	9.43	10.42	11.40	12.38	13.36	14.34	15.32	16.30	17.28	18.27	19.25
66	1.71	2.76	3.82	4.88	5.94	6.99	8.05	9.11	10.16	11.22	12.28	13.34	14.39	15.45	16.51	17.56	18.62	19.68	20.74
72	1.95	3.16	4.37	5.58	6.79	8.00	9.21	10.41	11.62	12.83	14.04	15.25	16.46	17.67	18.88	20.09	21.30	22.50	23.71
78	2.07	3.36	4.64	5.93	7.21	8.50	9.78	11.07	12.35	13.64	14.92	16.21	17.49	18.78	20.06	21.35	22.63	23.92	25.20
84	2.20	3.56	4.92	6.28	7.64	9.00	10.36	11.72	13.08	14.44	15.81	17.17	18.53	19.89	21.25	22.61	23.97	25.33	26.69
90	2.32	3.76	5.19	6.63	8.07	9.50	10.94	12.38	13.81	15.25	16.69	18.12	19.56	21.00	22.43	23.87	25.31	26.74	28.18
96	2.44	3.95	5.47	6.98	8.49	10.01	11.52	13.03	14.54	16.06	17.57	19.08	20.59	22.11	23.62	25.13	26.64	28.16	29.67
102	2.56	4.15	5.74	7.33	8.92	10.51	12.10	13.68	15.27	16.86	18.45	20.04	21.63	23.22	24.80	26.39	27.98	29.57	31.16
108	2.69	4.35	6.02	7.68	9.35	11.01	12.67	14.34	16.00	17.67	19.33	21.00	22.66	24.33	25.99	27.65	29.32	30.98	32.65
114	2.81	4.55	6.29	8.03	9.77	11.51	13.25	14.99	16.73	18.47	20.21	21.95	23.69	25.43	27.18	28.92	30.66	32.40	34.14
120	2.93	4.75	6.57	8.38	10.20	12.01	13.83	15.65	17.46	19.28	21.10	22.91	24.73	26.54	28.36	30.18	31.99	33.81	35.63

AL STD LOUVER -100 - RTV-STD-100 (1/2) ; Rev. 0 - October 2021

Height (Inches)

**Model: RTV-STD-100**

STD Louver 100

100mm Deep.Alu. Extruded Blades



### Certified Ratings:

Robertson Thermovent FZE certifies that the model RTV-STD-100 shown herein is licensed to bear the AMCA seal. The ratings shown are based on test and procedures performed in accordance with AMCA Publication 511 and comply with the requirements of the AMCA Certified Ratings Program. The AMCA Certified Ratings Seal applies to Air Performance ratings.

#### CONFIGURATION :

Supplied in modular assembly or knockdown form for rapid site installation.

#### MATERIALS :

Mill Finish Aluminium Extrusion

#### FRAMES :

100mm Deep

#### BLADES :

Aluminium Extruded blades

#### SCREEN :

Birdmesh : Crimped Aluminium

Insect Mesh : Stainless steel, 1.4x1.4mm Mesh, 0.23 mm wire

#### OPTIONAL :

PVDF (KYNAR)

Powder Coated

Powder coated - Fluorocarbon polymer

Super Durable PPC

Anodized

Epoxy Painted

Mill Finish

#### OPTIONAL :

Operable blades

### Ratings:

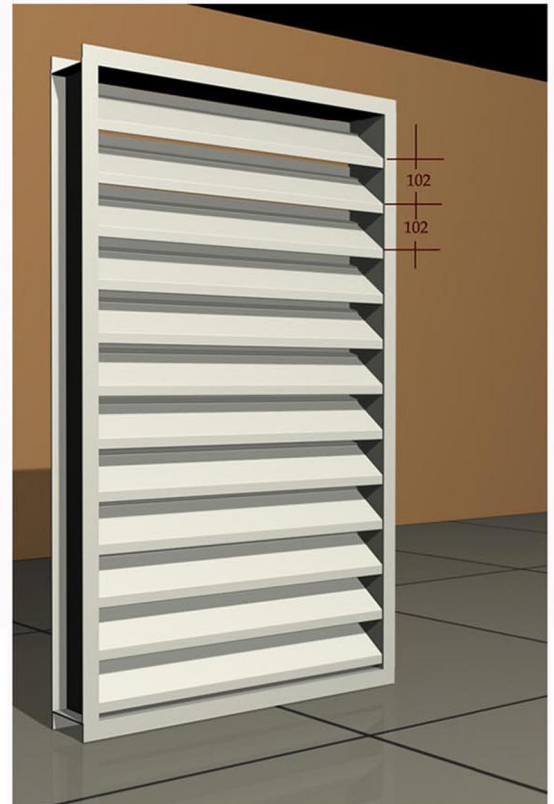
**Free Area :** [48" x 48" (1220 x 1220mm)] - 6.51ft<sup>2</sup>

**Performance at beginning point**

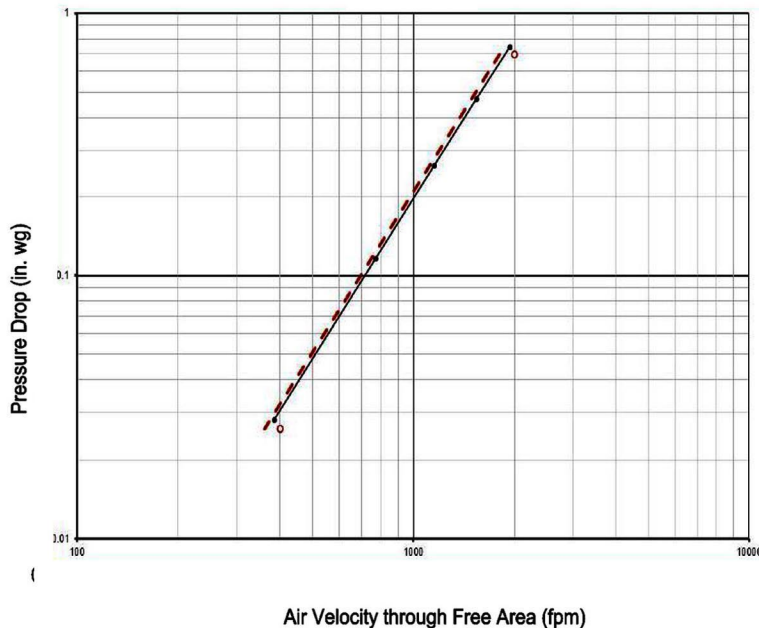
**Free Area Velocity:** 385 fpm

**Air Volume delivered :** 2523 cfm

**Pressure Loss :** 0.028 in wg



### Pressure Loss



### Intake

**Test Size :** [48" x 48" (1220 x 1220mm)]

Tested to AMCA 500-L - Figure 5.5 at standard air density.



Robertson Thermovent FZE  
P.O.Box 262148, Dubai - U.A.E  
Tel. : +9714 - 880 9300  
Fax. : +9714 - 880 9039  
E-mail [info@robertsonvent.com](mailto:info@robertsonvent.com)  
[www.robertsonvent.com](http://www.robertsonvent.com)

