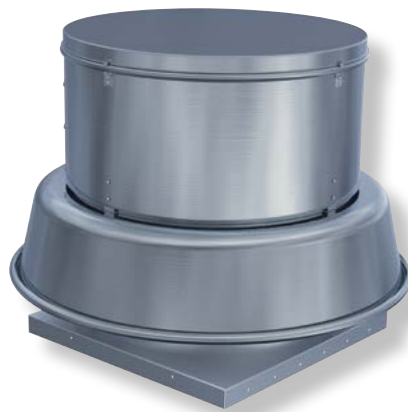


DOWNBLAST ROOF EXHAUSTERS



Model ACX



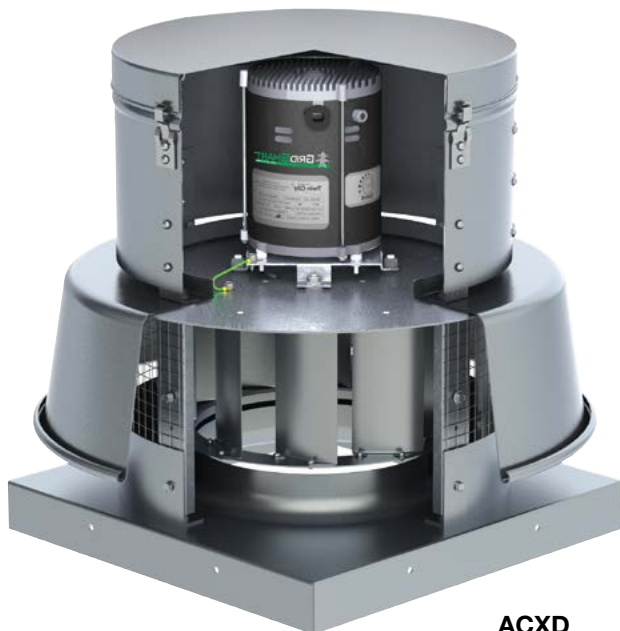
Model ACXD

MODELS: ACX/ACXD



Overview

Downblast Roof Exhausters



ACXD
Direct Drive

Aerovent's line of quiet, efficient and economical centrifugal roof exhausters are designed to offer world-class performance, quality and efficiency to meet the demands of today's ventilating requirements. Model ACXD (direct drive) and ACX (belt driven) spun aluminum ventilators cover a wide variety of commercial and industrial ventilating applications.

Typical Applications Include

Agriculture, Air Pollution Control, Automotive, Boilers, Brick, Car Wash, Commercial Plan & Spec, Composting, Ethanol, Food & Beverage, Foundry, General Manufacturing, Glass, HVAC, Institutional & Hospitality, Metal & Minerals, Microchip, OEM, Pharmaceutical, Power Generation, Recycling, Textile, Transportation

Wheel Types

Backward Inclined Centrifugal

Optional Construction

Special Coatings, Spark Resistant, UL 705

Certifications

AMCA Sound/Air and FEG, UL 705 Listed for Electrical, OSHPD Seismic Preapproval per OSP-0395-10, Miami-Dade County Hurricane Rating per NOA No. 12-0914.12

Now Available with



see page 8



ACXD and ACX models are cULus 705 listed for electrical, File No. E158680.



Aerovent, a Twin City Fan Company, certifies that the Models ACXD and ACX shown herein are licensed to bear the AMCA Seal. The ratings shown are based on tests and procedures performed in accordance with AMCA Publication 211 and AMCA Publication 311 and comply with the requirements of the AMCA Certified Ratings Program.



Fan Efficiency Grade (FEG) certification applies to Model ACX Sizes 140D, 160D, 160DHP, 180D, 180DHP, 210D, 210DHP, 240D, 240DHP, 300D, 300DHP, 360D, 360DHP, 420D and 480D.



For complete product performance, drawings and available accessories, download our Fan Selector program at aerovent.com.

Overview

Models

The centrifugal roof exhausters are designed for roof mounted exhaust of relatively clean air. Typical applications include general HVAC, warehouse exhaust, and exhaust for churches, schools and offices.

Model ACXD (Direct Drive)

8" to 19.25" wheel diameters

Airflow to 5,600 CFM

Static pressure to 1" w.g.

Model ACX (Belt Driven)

8.5" to 49.21" wheel diameters

Airflow to 28,700 CFM

Static pressure to 3.25" w.g.



ACX with
Spun Aluminum Housing



General HVAC
School Exhaust



Housings - ACX and ACXD housings feature heavy-gauge spun aluminum construction of the shroud and top cover. Shrouds feature a rolled bead edge for rigidity. Motor bands are constructed of heavy-gauge aluminum, rolled and beaded for rigidity. All housings provide complete protection of the motor and drive assembly, while allowing quick access to these components.

Bearings - Heavy-duty re-greaseable pillow block ball bearings are specifically designed for air handling applications to provide an average life (L-50) of 500,000 hours or more at maximum cataloged operating speeds.

Shaft - Precision ground and polished with a first critical speed of at least 125% of the fan's maximum operating speed.

Drive - Adjustable pitch V-belt drives with cast iron sheaves and heat resistant belts are selected at 150% of the driven motor horsepower.

Motors - ODP, TEFC and explosion proof, single and three phase motors are carefully matched to the fan load.

Vibration Isolation - Motor and drive assembly is completely isolated from the fan supports by rubber isolators to reduce transmission of noise and vibration.

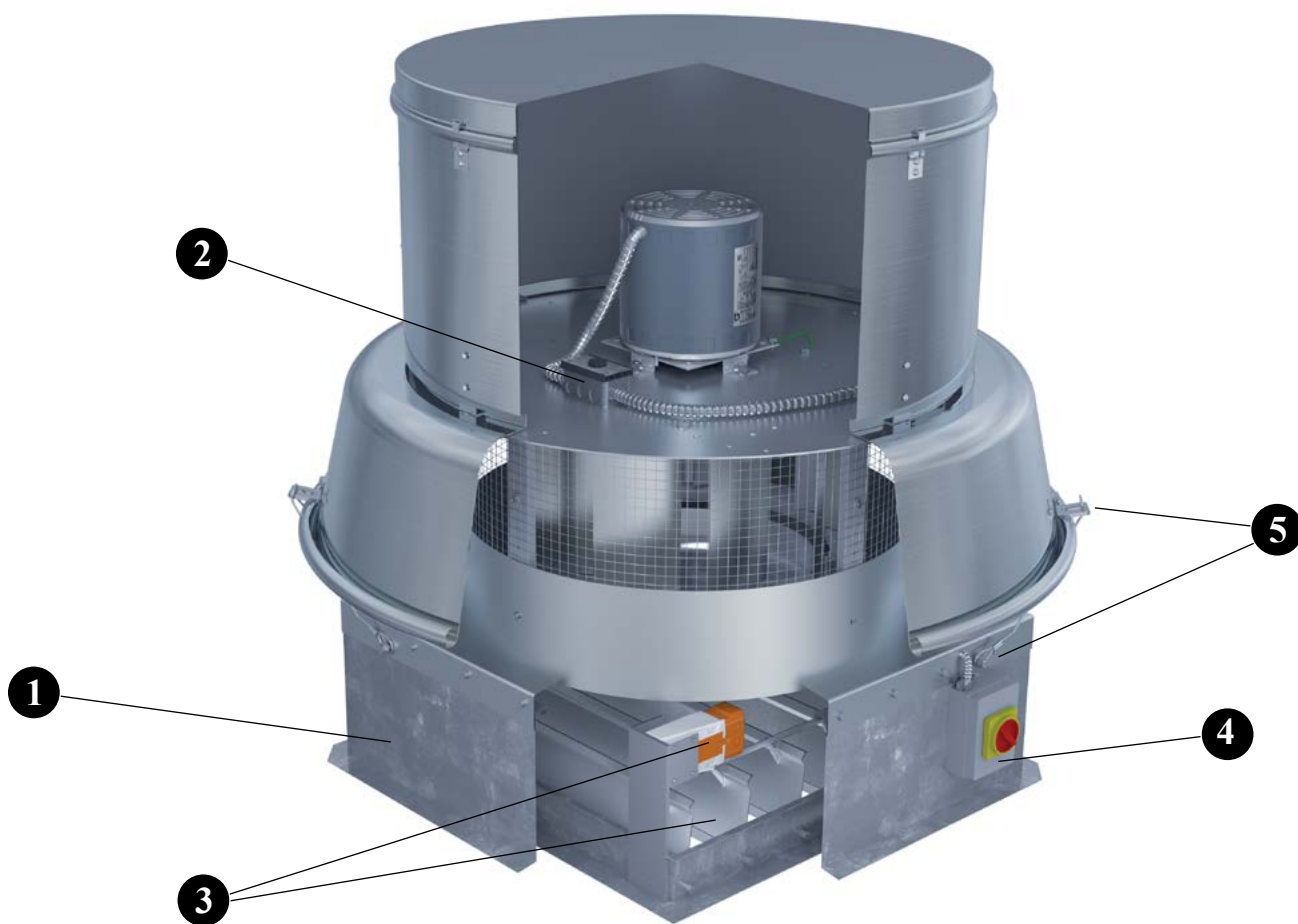
Wheel - Quiet and efficient non-overloading wheels with backwardly curved blades are precisely matched to a deep spun venturi. All wheels are statically and dynamically balanced to ensure smooth and quiet operation.

Galvanized Bird Screen - Protects the wheel, inlet and internal components from entry of birds.

Curb Cap - One-piece curb cap/inlet venturi assembly provides protection from weather. Prepunched mounting holes provide easy and accurate attachment to the roof curb.

Conduit Tubing - A conduit tube is furnished for running electrical wiring through the curb cap and into the motor compartment.

Disconnect Switch - Standard on all units. Fans are provided with a NEMA 1 type disconnect switch mounted in the motor compartment when ODP or TEFC motors are used. When explosion proof motors are specified, a NEMA 7/9 disconnect switch will be shipped loose for field mounting and wiring.



1 Self-Flashing Roof Curb Prefabricated roof curbs are available in heavy-duty galvanized steel or aluminum construction, in heights of 8", 12" or 18". The self-flashing style curb is provided with a factory installed 3/16" polystyrene gasket and damper tray. Curbs are provided with 1.5" of insulation as standard and feature continuously-welded seams for added rigidity and moisture protection. Prefabricated curbs are also available in canted, pitched and peak models. Refer to Catalog 4910 for complete details on roof curb options. Minimum 12" high curbs are recommended for use with motorized dampers.

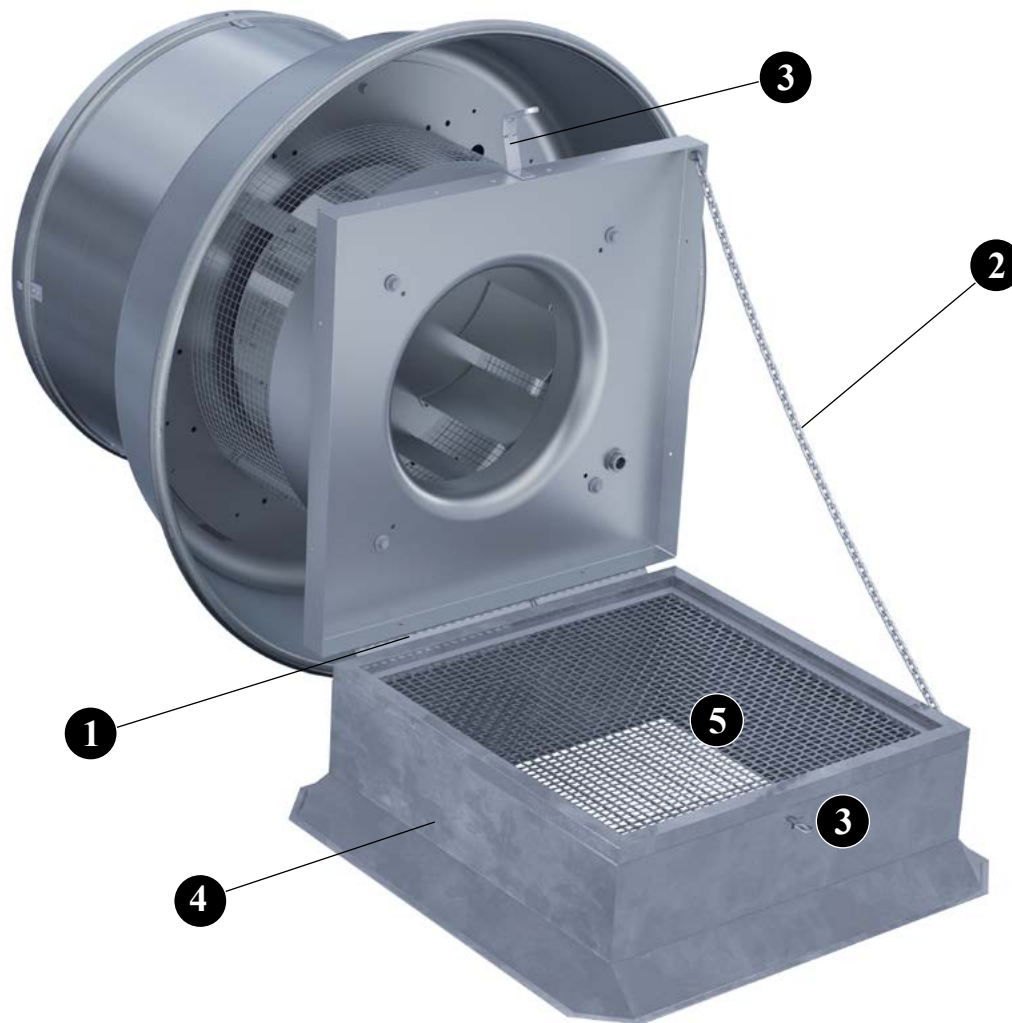
2 Variable Speed Control is an optional accessory on all ACXD models with 115 volt, open type motors, to allow the adjustment of airflow for system balancing. Variable speed controllers are solid-state (Tri-ac) design, and are designed to start the motor on high speed for better startup characteristics. Variable speed controls can be shipped separately, factory installed, or field installed on the unit at a later date. Motor must be ODP 115V, PSC or shaded pole type.

3 Backdraft Damper, with automatic or motorized operation, feature a felt seal on the edge of the damper blades for quiet operation. Damper frames are constructed of 19-gauge galvanized steel and blades are constructed of 26-gauge aluminum.

Motorized dampers are recommended for low CFM applications to assure unrestricted airflow. Motorized dampers are available with 115, 208, 230, 460, 575 or 24 volt service. End switches are available. When a motorized damper option is selected a 12" (or greater) high roof curb is required.

4 NEMA 4 Disconnect Switch provides positive electrical shutoff when fan cleaning or maintenance of fan and is water and dust tight. Switch is available shipped loose for field mounting and wiring or factory mounted and wired. NEMA 3R enclosure is also available.

5 Tie-Down Brackets A quantity of four brackets are mounted to the fan shroud to allow the fan to be secured to the roof in areas where high winds are a concern. Guy wires are supplied and installed by others.



- 1 Curb Hinge** The curb hinge arrangement provides easy access to the exhaust fan, backdraft damper and duct for servicing and cleaning. The curb hinge is of the piano type, running the entire length of the fan's curb base. The curb hinge option ships loose and is designed for use with a standard canted curb only (1.5" less than fan base). This option cannot be used with self-flashing curbs.
- 2 Retaining Chain** is available in conjunction with the curb hinge arrangement to stabilize the unit and to prevent damage from occurring to the unit while servicing and cleaning.
- 3 Security Hasp** A security hasp is available in conjunction with the curb hinge arrangement to prevent removal of the unit from the unit curb cap and prevent entrance into the building through the roof's ductwork.
- 4 Canted Roof Curb** Prefabricated roof curbs are available in heavy-duty galvanized steel or aluminum construction, in heights of 8", 12" or 18". The canted curb is provided with a factory installed wood nailer and damper tray. Curbs are provided with 1.5" of insulation as standard and feature continuously-welded seams for added rigidity and moisture protection. Prefabricated curbs are also available in self-flashing, pitched and peak models. Refer to Catalog 4910 for complete details on roof curb options. Minimum 12" high curbs are recommended for use with motorized dampers.
- 5 Insect Screen** Provides protection from entry of insects into wheel, inlet and interior of building.



- 1 Auto Belt Tensioner** Spring loaded pulley used for automatic belt tensioning. Eliminates the need for regular belt tensioning and extends belt life.
- 2 Miami-Dade Construction** All sizes on model ACXD and sizes 070-360 on model ACX are available with optional Miami-Dade Hurricane Construction. With this option, units are rated for wind loads up to 150 miles per hour. In conjunction with independent, licensed Florida Professional Engineers, these fans have undergone rigorous design, analysis and testing to ensure they meet the stringent product requirements of Miami-Dade County. Aerovent's NOA (Notice of Acceptance) number is 11-0126.08 and can be found on the Miami-Dade County website.

AEROVENT 
INDUSTRIAL VENTILATION SYSTEMS

OTHER OPTIONS/ACCESSORIES INCLUDE:

Special Coatings Powered roof exhausters often require special coatings for protective and decorative purposes. Available coatings include air-dried enamel, air-dried epoxy, and Heresite (air-dried phenolic). Contact your Aerovent sales representative for more information on available coatings and colors.

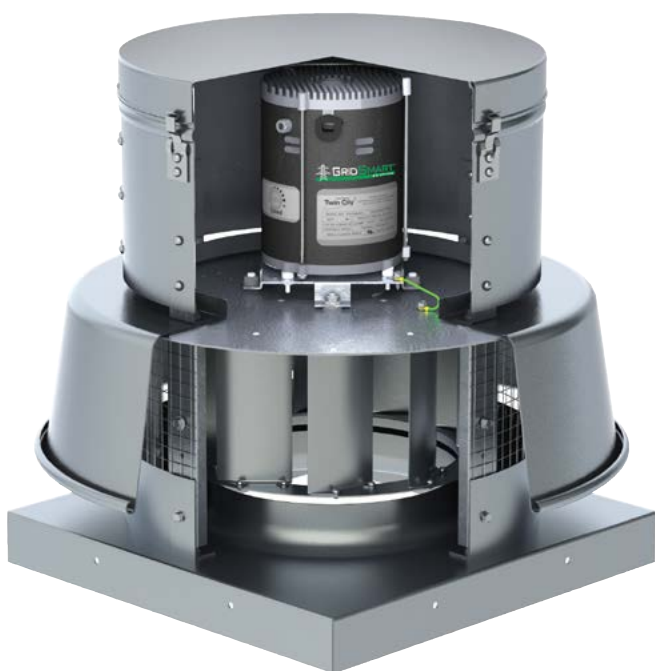
Straight-Sided Roof Curb Prefabricated roof curbs are available in heavy-duty galvanized steel or aluminum construction, in heights of 8", 12" or 18". The straight-sided style curb is provided with a factory installed damper tray and wood nailer, manufactured with the outside dimensions of a canted curb (1.5" less than fan curb cap inside dimension). Curbs are provided with 1.5" of insulation as standard and feature continuously-welded seams for added rigidity and moisture protection. Prefabricated curbs are also available in canted, self-flashing, pitched and peak models. Refer to Catalog 4910 for complete details on roof curb options. Minimum 12" high curbs are recommended for use with motorized dampers.

2-Speed Switch Two speed switch is available for 2 speed/2 winding motors to control the fan speed (high speed, low speed, off). Available on single phase, 1 HP and below.

Firestat Designed to shut down fan in the event of a fire to prevent spreading. For use with single phase motors only. Available shipped loose for field mounting and wiring or factory mounted and wired.

AMCA Spark B Includes a non-ferrous (aluminum) wheel and an aluminum rubbing plate around the opening through which the shaft passes.

Performance Baffle Inlet plate with customized diameter to meet specific performance point. Ships loose for field mounting.



Model ACXD
With GridSmart™ EC Motor

AEROVENT 
INDUSTRIAL VENTILATION SYSTEMS

Aerovent offers its own line of custom engineered Electronically Commutated (EC) motors. Electronic commutation is the latest motor technology to be used in direct drive fans. Also known in the industry as Brush Free or Brushless DC, the EC motors utilize an electronic circuit board to control the functionality of the motor. The motor operates off of single phase AC power, which is converted to DC power within the motor's circuitry. Aerovent has motor options available for 115V, 208-230V or 277V single phase electrical power. The result is a highly efficient motor, even at part load, with an expanded speed control range and a variety of speed control options from which to choose. EC motors are available in ODP, TENV and TEFC enclosures.



Benefits

- Efficiencies up to 85%
- Constant efficiency as the motor speed is varied
- Up to 66% energy savings over traditional PSC motors
- Performance range comparable to a belt drive fan with reduced maintenance benefits of a direct drive fan
- 80% usable turndown range as compared with 40% maximum on PSC motors
- Soft start gives fans smooth, quiet start
- Lower operating temperatures result in longer life and reduces energy consumption
- Heavy-duty ball bearings are permanently lubricated
- Elimination of VFD results in lower initial cost

EC Motor Options

1/6HP to 1HP

- 1/6HP: 115V, single phase
- 1/4HP – 1HP: 115V, 208-230V, 277V, single phase
- ODP or TENV Enclosure
- Motor mounted speed control dial as standard
- 0-10VDC control leads as standard
- Available with remote mounted speed control dial

1HP & 2HP

- 1HP: 115V, 208-230V, single phase
- 2HP: 208-230V, single phase
- TEFC enclosure (totally enclosed fan cooled)
- Available with motor mounted speed dial or 0-10VDC control lead



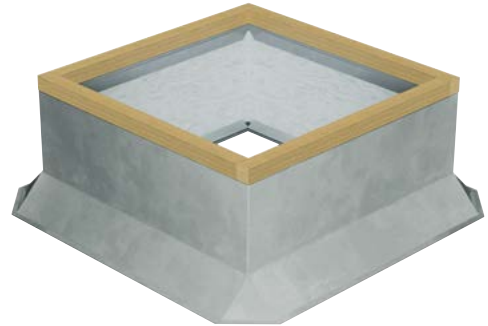
1HP & 2HP
GridSmart™ EC Motors



1/6HP to 1HP
GridSmart™ EC Motors

Canted Roof Curbs

- Constructed of 18-gauge galvanized steel with continuous welded seams
- Large 3" built-in 45° cant to accommodate roofing material to top of curb. Cant is beveled at corners for better support of roofing material
- Wood nailer (1½") secured to top ledge
- Lined with 1½" fiberglass fire-resistant, sound-absorbing insulation
- Damper shelf standard
- Options: Aluminum (16-gauge) construction, burglar security bars, metal liner (galvanized or aluminum), special heights up to 24", single or double pitched curbs for sloping roofs



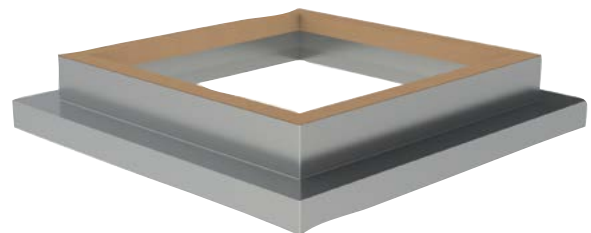
Self-Flashing & Straight-Sided Roof Curbs

- Constructed of 18-gauge galvanized steel with continuous welded seams
- Wide base plate (flashing) to insure watertight seal to roof
- Top ledge covered with 3/16" polystyrene gasket (self-flashing) for weather seal and to reduce metal-to-metal conducted noise
- Wood nailer secured to top ledge (straight-sided)
- Lined with 1½" fiberglass fire-resistant, sound-absorbing insulation
- Damper shelf standard
- Straight-sided roof curbs are constructed with the same features as the self-flashing curbs, but are one dimensional to allow for field supplied cants and roofing material to be brought up to the top of the curb
- Options: Aluminum (16-gauge) construction, burglar security bars, metal liner (galvanized or aluminum), special heights up to 24", single or double pitched curbs for sloping roofs



Curb Adapters

- Constructed of heavy-gauge galvanized steel with continuous welded seams
- Top ledge covered with 3/16" polystyrene gasket to reduce metal-to-metal conducted noise and act as a weather seal
- Available in enlarger or reducer (shown) models





NEMA 1 Disconnect Switch



NEMA 3R Disconnect Switch



NEMA 4 Disconnect Switch

Disconnect switches provide positive electrical shutoff during fan cleaning or maintenance.

NEMA 1 Disconnect Switch (Standard)

A NEMA 1 disconnect switch is available shipped loose for field mounting and wiring or factory mounted and wired with ODP or TEFC motors.

NEMA 3R Disconnect Switch

A NEMA 3R, rain proof, disconnect is available shipped loose for field mounting and wiring or factory mounted and wired externally.

NEMA 4 Disconnect Switch

A NEMA 4, water and dust tight, disconnect is available shipped loose for field mounting and wiring or factory mounted and wired externally.

NEMA 7/9 Disconnect Switch

A NEMA 7/9 disconnect switch is recommended on fans with explosion proof motors. The NEMA 7/9 switch is designed for use with fans operating in hazardous environments. Available shipped loose for field mounting and wiring. (Not shown.)



ACXD | Sizes 060B – 085B

EC MOTOR		PSC MOTOR		RPM	STATIC PRESSURE (INCHES W.G.)																				
SIZE	MTR HP	SIZE	MTR HP		0		0.100		0.125		0.250		0.375		0.500		0.625		0.750		0.875		1.000		
					BHP	Sone	BHP	Sone	BHP	Sone	BHP	Sone	BHP	Sone	BHP	Sone	BHP	Sone	BHP	Sone	BHP	Sone	BHP	Sone	BHP
060BE	1/6	060B	1/8	950	151		101		84																
					0.00	2.5	0.01	2.5	0.01	2.4															
				1150	183		145		133																
					0.01	3.5	0.01	3.2	0.01	3.4															
				1350	215		183		174		121														
					0.01	4.6	0.01	4.3	0.01	4.2	0.01	4.4													
				1425	227		197		189		141														
					0.02	5.1	0.02	5.1	0.02	4.8	0.02	5.0													
		1500	238		211		203		159		91														
			0.02	5.9	0.02	5.9	0.02	5.6	0.02	5.7	0.02	5.9													
1575	250		224		217		176		124																
	0.02	5.9	0.02	6.6	0.02	6.7	0.02	6.2	0.02	5.9															
1650	262		238		231		193		147																
	0.02	7.9	0.02	7.9	0.02	7.9	0.03	6.8	0.02	6.6															
---	---	1750	278		255		249		214		173		114												
			0.03	8.7	0.03	8.7	0.03	8.7	0.03	7.5	0.03	7.9	0.03	7.4											
070BE	1/6	070B	1/8	950	238		149		123																
					0.01	3.2	0.01	2.9	0.01	2.9															
				1150	288		219		199																
					0.01	4.5	0.01	4.0	0.01	4.3															
				1350	338		281		266		176														
					0.01	5.6	0.02	5.2	0.02	5.1	0.02	5.2													
				1425	356		303		289		207														
					0.02	6.1	0.03	5.6	0.02	5.4	0.02	5.2													
		1500	375		324		312		235																
			0.02	6.5	0.02	6.4	0.02	6.2	0.02	6.1															
1575	394		346		333		263		177																
	0.02	7.2	0.02	7.4	0.02	7.0	0.02	6.9	0.02	6.5															
1650	412		367		355		289		214																
	0.02	8.5	0.03	8.5	0.03	8.0	0.03	7.7	0.03	7.1															
---	---	1750	438		394		383		324		255														
			0.03	9.6	0.03	9.6	0.03	9.5	0.03	8.5	0.03	7.6													
080BE	1/6	080B	1/8	950	294		176		137																
					0.00	3.0	0.01	2.5	0.01	2.7															
				1150	356		262		236																
					0.01	4.4	0.01	3.9	0.01	4.1															
				1350	418		340		319		198														
					0.01	5.8	0.02	5.2	0.02	5.1	0.01	5.2													
				1425	442		367		348		240														
					0.01	6.4	0.02	5.8	0.02	5.6	0.02	5.6													
		1500	465		395		376		277																
			0.02	6.9	0.02	6.4	0.02	6.2	0.02	6.0															
1575	488		422		404		312																		
	0.02	7.4	0.02	7.2	0.02	6.7	0.02	6.9																	
1650	512		448		432		345		240																
	0.02	7.9	0.03	7.9	0.03	7.5	0.03	7.7	0.03	7.3															
---	---	1750	542		483		468		387		296														
			0.03	8.9	0.03	8.9	0.03	8.4	0.03	8.4	0.03	7.9													
085BE	1/6	085B	1/8	950	401		331		311		185														
					0.02	4.0	0.02	3.4	0.02	3.4	0.02	3.4													
				1150	485		430		414		328		214												
					0.04	5.8	0.04	5.7	0.04	5.2	0.04	5.3	0.04	5.0											
				1350	570		524		512		443		364		268										
					0.06	7.7	0.06	7.7	0.06	7.7	0.06	6.6	0.06	7.0	0.06	6.7									
				1425	601		558		547		483		412		328		202								
					0.07	8.4	0.07	8.4	0.07	8.4	0.07	7.3	0.07	7.8	0.07	7.3	0.06	7.1							
		1500	633		592		581		522		457		381		291										
			0.08	8.9	0.08	8.9	0.08	8.9	0.08	7.9	0.09	8.4	0.08	7.6	0.08	7.9									
1575	665		626		616		560		499		431		353		244										
	0.09	9.6	0.09	9.6	0.10	9.6	0.10	8.6	0.10	8.5	0.10	8.9	0.10	8.4	0.08	8.4									
1650	696		660		650		596		540		479		407		325										
	0.10	10.2	0.11	10.2	0.11	10.2	0.11	9.6	0.11	9.1	0.11	9.6	0.10	9.0	0.11	9.1									
---	---	1750	738		704		695		647		594		538		475		405		321						
			0.12	11.1	0.13	11.1	0.13	11.1	0.13	10.8	0.13	10.1	0.14	10.4	0.13	10.4	0.13	10.1	0.12	10.2					

EC Motor is an Electronically Commutated Motor.
PSC Motor is a Permanent Split Capacitor Motor.

NOTES:

- The AMCA Seal for sound ratings does not apply to units with speed control.
- Performance certified is for installation Type A: Free inlet, Free outlet.
- Performance ratings do not include the effects of appurtenances (accessories).
- Sound ratings shown are loudness values in fan sones at 5 ft. (1.5 m) in a hemispherical free field calculated per AMCA Standard 301-90.
Type A: Free inlet fan hemispherical sone levels.
- Highlighted speeds indicate nominal speeds without speed control on PSC motors. All other speeds are intermediate speeds set with the solid-state speed controller.
- 1/8 HP motor is 3-speed (1650 RPM/1500 RPM/1350 RPM).
- Speed control on PSC motors is available for ODP 115/60/1 only. PSC motors are wired at either the 1650 or the 1500 RPM taps.

ACXD | Sizes 090B – 120B

EC MOTOR		PSC MOTOR		RPM	STATIC PRESSURE (INCHES W.G.)													
SIZE	MTR HP	SIZE	MTR HP		0	0.100	0.125	0.250	0.375	0.500	0.625	0.750	0.875	1.000				
					CFM BHP Sone	CFM BHP Sone	CFM BHP Sone	CFM BHP Sone	CFM BHP Sone	CFM BHP Sone	CFM BHP Sone	CFM BHP Sone	CFM BHP Sone	CFM BHP Sone	CFM BHP Sone	CFM BHP Sone		
090BE	1/6	090B	1/8	950	519	430	403	235										
					0.02 4.0	0.02 3.5	0.02 3.5	0.02 3.5										
				1150	628	558	538	422	273									
					0.04 5.7	0.04 5.6	0.04 5.3	0.04 5.3	0.04 5.0									
				1350	737	679	663	574	467	340								
					0.06 7.6	0.06 7.6	0.06 7.6	0.07 6.8	0.07 6.8	0.07 6.8								
				1425	778	723	709	627	530	417	253							
					0.07 8.3	0.07 8.3	0.08 8.3	0.08 7.4	0.08 7.7	0.08 7.3	0.07 7.2							
				1500	819	767	754	678	589	488	370							
					0.08 8.9	0.09 8.9	0.09 8.9	0.09 8.1	0.10 8.4	0.09 7.7	0.09 8.0							
				1575	860	811	798	728	646	553	448	310						
					0.09 9.6	0.10 9.6	0.10 9.6	0.11 8.7	0.11 8.7	0.11 8.8	0.11 8.6	0.10 8.6						
---	---	---	---	1650	901	854	842	776	701	616	521	413						
					0.11 10.4	0.11 10.4	0.11 10.4	0.12 9.8	0.13 9.3	0.13 9.8	0.12 9.2	0.12 9.5						
				1750	956	912	900	840	771	694	609	516	409					
					0.13 11.5	0.13 11.5	0.13 11.5	0.14 11.0	0.15 10.2	0.15 10.8	0.15 10.5	0.15 10.2	0.14 10.3					
095BE	1/4	095B	1/8	950	700	574	538	283										
					0.03 4.6	0.03 4.0	0.03 4.1	0.03 3.6										
				1150	848	747	719	564	323									
					0.04 6.6	0.05 6.3	0.05 6.0	0.05 6.0	0.04 5.3									
				1350	995	911	889	767	623	411								
					0.07 8.7	0.08 8.7	0.08 8.3	0.08 7.8	0.08 7.5	0.07 7.1								
				1425	1050	972	951	837	709	534	304							
					0.08 9.5	0.09 9.5	0.09 9.5	0.10 8.7	0.10 8.9	0.09 7.8	0.07 7.5							
				1500	1106	1031	1012	905	789	644	443							
					0.10 10.6	0.11 10.6	0.11 10.6	0.11 9.8	0.11 9.9	0.11 8.4	0.10 8.4							
				1575	1161	1090	1072	972	864	736	568	368						
					0.11 11.3	0.12 11.3	0.12 11.3	0.13 11.2	0.13 11.0	0.13 10.5	0.12 9.5	0.10 9.2						
---	---	---	---	1650	1216	1149	1131	1038	936	823	682	497						
					0.13 13.6	0.14 13.6	0.14 13.6	0.15 12.8	0.15 11.7	0.15 12.4	0.15 10.1	0.13 10.1						
				1750	1290	1227	1210	1124	1029	929	812	661	483					
					0.16 14.9	0.16 14.9	0.17 14.9	0.18 14.8	0.18 13.2	0.18 13.5	0.18 12.8	0.17 11.5	0.15 11.4					
100BE	1/4	100B	1/15*	500	430													
					0.01 1.6													
				700	602	391	318											
					0.01 3.7	0.02 3.3	0.01 3.1											
			1/8*	860	740	581	534	229										
					0.03 5.4	0.03 4.8	0.03 5.1	0.02 4.4										
				1000	860	727	691	465										
					0.04 7.0	0.04 6.5	0.04 6.2	0.04 5.9										
			1/3*	1160	998	885	855	687	467									
					0.06 9.0	0.07 8.6	0.07 8.5	0.07 8.5	0.06 7.7									
				1450	1247	1158	1135	1015	877	713	524							
					0.12 12.9	0.13 12.9	0.13 12.9	0.13 11.6	0.13 12.4	0.13 11.4	0.12 11.6							
1750	1505	1432	1413	1317	1216	1103	977	834	677	517								
	0.22 17.5	0.22 17.5	0.22 17.5	0.23 16.7	0.23 16.0	0.23 16.7	0.23 16.6	0.22 15.7	0.21 16.0	0.19 15.9								
120BE	1/2	120B	1/15*	500	572													
					0.01 1.8													
				700	802	571	489											
					0.02 3.9	0.02 3.4	0.02 3.2											
			1/8*	860	985	806	756	450										
					0.03 5.8	0.04 4.8	0.04 4.7	0.04 4.8										
				1000	1145	995	955	723	418									
					0.05 7.2	0.06 6.7	0.06 6.3	0.07 6.4	0.06 6.4									
			1/3*	1160	1328	1201	1168	985	768	496								
					0.08 9.4	0.10 9.4	0.10 9.0	0.10 8.3	0.10 8.0	0.09 8.2								
				1450	1660	1560	1535	1399	1251	1085	902	682						
					0.16 13.2	0.18 13.2	0.18 13.2	0.19 11.9	0.20 12.1	0.20 12.5	0.19 11.8	0.18 11.9						
1750	2004	1922	1901	1793	1678	1557	1427	1284	1132	968								
	0.29 18.0	0.31 18.0	0.31 18.0	0.33 17.9	0.34 16.4	0.35 16.7	0.35 17.7	0.35 16.7	0.34 15.7	0.33 16.6								

EC Motor is an Electronically Commutated Motor.
PSC Motor is a Permanent Split Capacitor Motor.

* 3-phase units are supplied with 1/8 HP 860 RPM, 1/4 HP 1160 RPM and 1/2 HP 1750 RPM motors.

NOTES:

1. The AMCA Seal for sound ratings does not apply to units with speed control.
2. Performance certified is for installation Type A: Free inlet, Free outlet.
3. Performance ratings do not include the effects of appurtenances (accessories).
4. Sound ratings shown are loudness values in fan sones at 5 ft. (1.5 m) in a hemispherical free field calculated per AMCA Standard 301-90.
Type A: Free inlet fan hemispherical sone levels.
5. Highlighted speeds indicate nominal speeds without speed control on PSC motors. All other speeds are intermediate speeds set with the solid-state speed controller.
6. Speed control on PSC motors is available for ODP 115/60/1 only.

ACXD | Sizes 130B – 180B

EC MOTOR		PSC MOTOR		RPM	STATIC PRESSURE (INCHES W.G.)															
SIZE	MTR HP	SIZE	MTR HP		0	0.100	0.125	0.250	0.375	0.500	0.625	0.750	0.875	1.000						
					CFM BHP Sone	CFM BHP Sone	CFM BHP Sone	CFM BHP Sone	CFM BHP Sone	CFM BHP Sone	CFM BHP Sone	CFM BHP Sone	CFM BHP Sone	CFM BHP Sone	CFM BHP Sone	CFM BHP Sone				
130BE	3/4	130B	1/8	500	778 0.01 2.2	415 0.02 1.9	276 0.01 1.9													
				700	1089 0.04 5.2	865 0.04 4.6	804 0.04 4.9	364 0.04 4.5												
				860	1338 0.07 7.4	1163 0.07 7.0	1114 0.07 6.7	845 0.08 6.8	456 0.07 6.8											
			1/4	1000	1556 0.11 9.4	1408 0.11 9.4	1368 0.12 8.9	1157 0.12 9.4	895 0.12 9.0	552 0.11 9.0										
				1160	1805 0.17 12.1	1679 0.18 12.1	1646 0.18 12.1	1470 0.18 11.5	1282 0.19 12.9	1048 0.19 12.1	760 0.18 12.7									
			1/2	1450	2256 0.33 17.0	2156 0.34 17.0	2131 0.34 17.0	1998 0.35 17.2	1856 0.36 17.1	1709 0.37 18.0	1550 0.37 18.7	1362 0.37 17.2	1139 0.36 18.0	904 0.34 18.0						
				1750	2723 0.58 22	2641 0.59 22	2620 0.59 22	2513 0.60 22	2402 0.62 23	2285 0.62 22	2164 0.63 23	2041 0.64 24	1910 0.65 25	1763 0.65 24						
			140BE	3/4	140B	1/8	500	884 0.02 2.9	502 0.02 2.1	344 0.02 2.1										
							700	1237 0.04 6.3	999 0.05 5.0	931 0.05 5.1	459 0.04 4.6									
							860	1520 0.08 9.0	1334 0.08 8.3	1283 0.08 7.8	994 0.09 7.5	573 0.08 7.0								
1000	1767 0.13 11.0	1611 0.13 11.0				1569 0.13 10.6	1340 0.13 9.4	1067 0.13 8.7	688 0.12 9.1											
1160	2050 0.20 14.3	1917 0.20 14.3				1882 0.20 14.3	1695 0.21 12.1	1488 0.21 12.3	1248 0.21 11.1	940 0.19 11.6										
---	1450	2562 0.39 19.6				2458 0.39 19.6	2431 0.39 19.6	2290 0.4 18.9	2138 0.4 17.4	1977 0.41 17.3	1805 0.41 18.4	1612 0.41 17.3	1391 0.39 17.0	1117 0.38 17.0						
	1750	3092 0.68 26			3006 0.69 26	2984 0.69 26	2872 0.70 26	2753 0.70 25	2628 0.71 24	2497 0.71 23	2362 0.72 23	2220 0.72 24	2068 0.72 24							
	150BE	1			150B	1/8	500	1192 0.03 3.1	714 0.03 2.4	571 0.03 2.6										
700							1670 0.08 6.0	1350 0.08 5.2	1267 0.08 5.4	779 0.07 5.3										
860							2051 0.14 8.6	1788 0.14 8.1	1725 0.15 7.7	1378 0.15 8.2	965 0.13 7.8									
1/4			1000	2385 0.22 10.9		2157 0.22 10.9	2102 0.23 10.4	1822 0.23 9.8	1499 0.23 9.9	1142 0.21 10.0	766 0.19 10.1									
	1160	2767 0.34 13.8	2569 0.35 13.8	2521 0.35 13.8	2284 0.36 12.2	2035 0.36 13.0	1750 0.35 12.8	1445 0.34 12.6	1127 0.31 12.8	777 0.28 12.6										
---	1400	3339 0.60 19.4	3175 0.61 19.4	3134 0.61 19.4	2935 0.62 18.3	2740 0.63 16.6	2535 0.63 17.1	2315 0.63 18.2	2068 0.62 16.9	1816 0.60 16.9	1557 0.58 17.5									
	1750	4174 1.17 27	4042 1.18 27	4010 1.18 27	3847 1.20 27	3688 1.21 26	3532 1.22 24	3375 1.23 24	3210 1.24 24	3040 1.24 25	2859 1.23 26									
160BE	1**	160B	1/4*	500	1394 0.04 4.3	936 0.04 3.6	792 0.04 3.3													
				700	1952 0.10 8.7	1661 0.12 7.6	1577 0.12 7.1	1089 0.12 6.9												
				860	2398 0.19 11.9	2171 0.21 11.9	2109 0.21 11.4	1755 0.22 10.3	1346 0.22 9.8	854 0.19 9.9										
				1000	2788 0.30 14.2	2597 0.32 14.2	2546 0.32 14.2	2265 0.34 12.2	1941 0.35 13.0	1585 0.34 12.3	1197 0.31 12.9									
				1160	3234 0.46 17.5	3071 0.49 17.5	3028 0.49 17.5	2801 0.52 16.5	2546 0.54 15.7	2262 0.54 16.2	1956 0.54 15.4	1644 0.51 15.8	1278 0.47 15.9							
				---	1450	4043 0.91 25	3914 0.94 25	3881 0.94 25	3709 0.98 25	3525 1.01 23	3327 1.04 22	3114 1.06 22	2887 1.06 23	2647 1.06 23	2398 1.05 22					
			1750		4879 1.59 34	4773 1.63 34	4746 1.64 34	4608 1.68 34	4464 1.73 34	4313 1.77 33	4153 1.81 31	3985 1.84 30	3810 1.86 29	3625 1.86 30						
			2		1450	5881 2.59 45	5681 2.63 45	5646 2.64 45	5409 2.68 45	5125 2.73 45	4837 2.77 45	4543 2.81 45	4248 2.84 45	3953 2.86 45	3658 2.88 45					
					1750	7143 3.59 63	6943 3.63 63	6908 3.64 63	6671 3.68 63	6387 3.73 63	6093 3.77 63	5798 3.81 63	5503 3.84 63	5208 3.86 63	4913 3.88 63					

EC Motor is an Electronically Commutated Motor.
PSC Motor is a Permanent Split Capacitor Motor.

* 3-phase units are supplied with 1/2 HP 860 RPM and 1 HP 1160 RPM motors.
** Performance available with 1 HP 1160 RPM EC-ODP or 1 HP 1750 RPM EC-TEFC motors. 1160 RPM maximum.

NOTES:

- The AMCA Seal for sound ratings does not apply to units with speed control.
- Performance certified is for installation Type A: Free inlet, Free outlet.
- Performance ratings do not include the effects of appurtenances (accessories).
- Sound ratings shown are loudness values in fan sones at 5 ft. (1.5 m) in a hemispherical free field calculated per AMCA Standard 301-90. Type A: Free inlet fan hemispherical sone levels.
- Highlighted speeds indicate nominal speeds without speed control on PSC motors. All other speeds are intermediate speeds set with the solid-state speed controller.
- Speed control on PSC motors is available for ODP 115/60/1 only.

ACXD | Sizes 170B – 180B

EC MOTOR		PSC MOTOR		RPM	STATIC PRESSURE (INCHES W.G.)																					
SIZE	MTR HP	SIZE	MTR HP		0	0.100		0.125		0.250		0.375		0.500		0.625		0.750		0.875		1.000				
					CFM	CFM		CFM		CFM		CFM		CFM		CFM		CFM		CFM		CFM		CFM		
					BHP Sone	BHP	Sone	BHP	Sone	BHP	Sone	BHP	Sone	BHP	Sone	BHP	Sone	BHP	Sone	BHP	Sone	BHP	Sone	BHP	Sone	
170BE	1	170B	1/4"	500	1669	1183	1031																			
					0.05	4.0	0.05	3.6	0.05	3.3																
				700	2337	2015	1929	1421	845																	
				0.14	7.8	0.14	7.1	0.14	6.6	0.14	6.1	0.13	6.4													
			860	2871	2613	2546	2185	1755	1293	750																
				0.25	10.8	0.26	10.8	0.26	10.6	0.27	9.6	0.27	8.7	0.25	9.2	0.21	8.7									
	2	---	---	1000	3338	3118	3061	2768	2437	2063	1663	1260														
					0.40	13.8	0.40	13.8	0.40	13.8	0.42	12.2	0.43	12.4	0.42	11.5	0.41	11.6	0.38	12.2						
				1160	3872	3684	3636	3388	3128	2839	2521	2182	1837	1488												
					0.62	17.4	0.62	17.4	0.63	17.4	0.64	16.5	0.66	15.4	0.67	15.8	0.66	15.7	0.65	14.4	0.63	15.3	0.60	15.4		
180BE	1	180B	1/2	1380	4606	4449	4409	4205	3995	3777	3542	3289	3021	2738												
					1.04	22	1.05	22	1.05	22	1.06	22	1.08	21	1.11	20	1.12	20	1.12	21	1.12	21	1.10	19.1		
				1600	5341	5205	5171	4997	4819	4638	4451	4256	4048	3829												
				1.63	28	1.63	28	1.63	28	1.64	28	1.66	28	1.69	27	1.72	26	1.75	25	1.75	26	1.75	27			
			2	---	---	500	2165	1660	1512	440																
							0.08	5.1	0.08	4.5	0.08	4.8	0.05	4.2												
	700	3031				2693	2601	2096	1496																	
		0.21				9.8	0.22	9.5	0.22	9.0	0.23	9.1	0.21	9.2												
	2	---	---	1	860	3724	3454	3383	3005	2583	2115	1571														
						0.38	13.6	0.40	13.6	0.40	13.6	0.41	12.4	0.42	13.6	0.41	12.8	0.37	13.6							
1000					4330	4100	4041	3729	3392	3025	2631	2195	1696	879												
					0.60	17.6	0.62	17.6	0.62	17.6	0.64	17.1	0.65	16.5	0.66	17.5	0.65	16.8	0.62	17.1	0.57	17.1	0.43	15.3		
2				---	---	1160	5023	4826	4776	4515	4239	3945	3633	3304	2954	2575										
							0.94	23	0.96	23	0.96	23	0.98	23	1.00	21	1.02	21	1.02	22	1.02	22	1.01	20	0.97	21
						1230	5326	5141	5094	4850	4594	4323	4038	3737	3422	3088										
							1.12	25	1.14	25	1.14	25	1.17	25	1.19	24	1.20	23	1.22	23	1.22	25	1.22	24	1.20	23
2	---	---	---	1300	5629	5454	5410	5181	4942	4691	4428	4151	3862	3561												
					1.32	27	1.34	27	1.35	27	1.37	27	1.39	27	1.41	25	1.43	25	1.44	26	1.44	26	1.43	25		

EC Motor is an Electronically Commutated Motor.
PSC Motor is a Permanent Split Capacitor Motor.

* 3-phase units are supplied with 1/2 HP 860 RPM and 1 HP 1160 RPM motors.

NOTES:

1. The AMCA Seal for sound ratings does not apply to units with speed control.
2. Performance certified is for installation Type A: Free inlet, Free outlet.
3. Performance ratings do not include the effects of appurtenances (accessories).
4. Sound ratings shown are loudness values in fan sones at 5 ft. (1.5 m) in a hemispherical free field calculated per AMCA Standard 301-90. Type A: Free inlet fan hemispherical sone levels.
5. Highlighted speeds indicate nominal speeds without speed control on PSC motors. All other speeds are intermediate speeds set with the solid-state speed controller.
6. Speed control on PSC motors is available for ODP 115/60/1 only.

ACX | Size 070D

HP	RPM	STATIC PRESSURE (INCHES W.G.)											
		0	0.125	0.25	0.375	0.50	0.625	0.75	0.875	1.00	1.125	1.25	1.375
		CFM BHP Sone	CFM BHP Sone	CFM BHP Sone	CFM BHP Sone	CFM BHP Sone	CFM BHP Sone	CFM BHP Sone	CFM BHP Sone	CFM BHP Sone	CFM BHP Sone	CFM BHP Sone	CFM BHP Sone
1/4	795	180 0.01 4.0	85 0.01 4.0										
	1125	254 0.02 7.4	197 0.02 7.4	120 0.02 7.4									
	1375	311 0.03 4.4	263 0.03 6.5	214 0.03 8.4	145 0.03 9.1								
	1590	359 0.05 5.5	316 0.05 6.3	279 0.05 7.4	234 0.05 8.2	169 0.04 8.4							
	1775	401 0.06 6.5	362 0.06 6.6	329 0.06 6.8	290 0.06 7.3	251 0.06 7.9	187 0.06 7.9						
	1945	440 0.08 7.4	403 0.08 7.4	372 0.08 7.0	340 0.08 6.9	303 0.08 7.7	267 0.08 8.0	206 0.08 7.8					
	2100	475 0.10 8.6	441 0.10 8.7	411 0.10 8.1	383 0.11 7.9	350 0.11 8.4	316 0.11 9.0	282 0.11 9.2	222 0.10 9.1				

MAXIMUM MOTOR FRAME SIZE: 48

ACX | Size 075D

HP	RPM	STATIC PRESSURE (INCHES W.G.)											
		0	0.125	0.25	0.375	0.50	0.625	0.75	0.875	1.00	1.125	1.25	1.375
		CFM BHP Sone	CFM BHP Sone	CFM BHP Sone	CFM BHP Sone	CFM BHP Sone	CFM BHP Sone	CFM BHP Sone	CFM BHP Sone	CFM BHP Sone	CFM BHP Sone	CFM BHP Sone	CFM BHP Sone
1/4	940	322 0.02 3.7	217 0.02 3.5										
	1060	363 0.02 4.4	278 0.02 4.5										
	1180	404 0.03 5.0	327 0.03 4.7	214 0.03 4.7									
	1300	445 0.04 5.5	372 0.04 5.2	291 0.05 5.3									
	1420	486 0.05 6.0	419 0.06 6.0	355 0.06 5.6	242 0.06 5.4								
	1540	527 0.06 6.6	467 0.07 6.6	412 0.07 6.2	327 0.08 6.5	167 0.06 5.6							
	1660	568 0.08 7.5	514 0.09 7.5	459 0.09 7.0	393 0.09 7.4	296 0.09 6.7							
	1780	609 0.10 8.5	560 0.11 8.5	504 0.11 8.0	456 0.11 7.9	378 0.12 8.4	260 0.11 7.5						
	1900	650 0.12 9.4	605 0.13 9.4	550 0.14 9.2	510 0.14 8.7	445 0.14 9.2	365 0.14 8.9	225 0.12 8.1					

MAXIMUM MOTOR FRAME SIZE: 48

ACX | Size 085D

HP	RPM	STATIC PRESSURE (INCHES W.G.)											
		0	0.125	0.25	0.375	0.50	0.625	0.75	0.875	1.00	1.125	1.25	1.50
		CFM BHP Sone	CFM BHP Sone	CFM BHP Sone	CFM BHP Sone	CFM BHP Sone	CFM BHP Sone	CFM BHP Sone	CFM BHP Sone	CFM BHP Sone	CFM BHP Sone	CFM BHP Sone	CFM BHP Sone
1/4	715	273 0.009 2.4	180 0.01 2.1										
	860	329 0.016 3.8	260 0.018 3.2	122 0.015 3.4									
	940	359 0.02 4.5	298 0.022 3.9	204 0.023 4.1									
	1200	458 0.042 7.4	413 0.044 7	359 0.048 6.3	286 0.048 6.6	143 0.04 6.4							
	1450	554 0.074 11.5	517 0.076 12.1	477 0.08 10.2	430 0.084 10	373 0.085 10	292 0.082 10.7						
	1600	611 0.1 15	578 0.102 15.1	543 0.105 13.9	503 0.111 13.1	459 0.114 12.7	404 0.114 13.6	330 0.111 13.8	214 0.097 13.6				
	1750	668 0.13 17.3	639 0.13 17.5	607 0.14 17.1	572 0.14 15.4	534 0.15 15.1	492 0.15 14.8	441 0.15 15.8	374 0.15 15.9	284 0.13 15.9			
	1880	718 0.16 19.3	691 0.16 19.3	661 0.17 19.9	630 0.17 17.1	596 0.18 17.1	560 0.18 17.2	519 0.19 16.5	469 0.19 17.4	408 0.18 18.3	328 0.17 18.3		
	2000	764 0.2 22	738 0.2 22	711 0.2 22	682 0.2 21	652 0.21 19.3	618 0.22 19.2	583 0.22 18.6	543 0.22 18.6	495 0.22 19.9	437 0.22 20	365 0.21 20	
	2110	806 0.23 24	782 0.23 24	756 0.23 24	729 0.24 23	701 0.24 21	671 0.25 21	638 0.26 21	603 0.26 20	564 0.26 21	517 0.26 22	462 0.26 22	304 0.23 22

MAXIMUM MOTOR FRAME SIZE: 48

NOTES:

- Performance certified is for Installation Type A: Free inlet, free outlet.
- Power rating (BHP) does not include transmission losses.
- Performance ratings do not include the effects of appurtenances (accessories).
- The sound ratings shown are loudness values in fan sones at 5 ft. (1.5 m) in a hemispherical free field calculated per AMCA Standard 301.
- Values shown are for installation Type A: Free inlet fan hemispherical sone levels.

ACX | Size 100D

HP	RPM	STATIC PRESSURE (INCHES W.G.)											
		0	0.125	0.25	0.375	0.50	0.625	0.75	0.875	1.00	1.125	1.25	1.375
		CFM	CFM	CFM	CFM	CFM	CFM	CFM	CFM	CFM	CFM	CFM	CFM
		BHP Sone	BHP Sone	BHP Sone	BHP Sone	BHP Sone	BHP Sone	BHP Sone	BHP Sone	BHP Sone	BHP Sone	BHP Sone	BHP Sone
1/4	775	725 0.03 4.8	591 0.03 4.2	448 0.03 3.9									
	925	865 0.05 6.5	749 0.06 5.7	651 0.06 6.3	498 0.06 5.4								
	1250	1169 0.13 10.0	1080 0.14 10.1	999 0.14 8.7	924 0.14 9.3	856 0.15 10.0	755 0.15 8.2						
	1510	1412 0.23 14.0	1337 0.24 14.0	1267 0.24 12.3	1202 0.25 11.6	1139 0.25 11.8	1081 0.26 12.7	1024 0.26 12.7	946 0.26 10.8	812 0.25 10.4			
	1590	1487 0.26 14.9	1416 0.27 14.9	1349 0.28 13.6	1285 0.29 12.6	1225 0.29 12.5	1167 0.30 13.3	1114 0.30 14.1	1057 0.30 13.5	970 0.30 11.0	834 0.29 11.2		
1/3	1665	1557 0.30 16.1	1489 0.31 16.1	1424 0.32 14.9	1363 0.33 13.8	1305 0.33 13.3	1248 0.34 13.6	1196 0.34 14.5	1145 0.35 15.0	1085 0.35 13.7	990 0.34 12.1	851 0.33 12.2	

MAXIMUM MOTOR FRAME SIZE: 56

ACX | Size 100DHP

HP	RPM	STATIC PRESSURE (INCHES W.G.)											
		0.125	0.25	0.50	0.625	0.75	0.875	1.00	1.25	1.50	1.75	2.00	2.25
		CFM	CFM	CFM	CFM	CFM	CFM	CFM	CFM	CFM	CFM	CFM	CFM
		BHP Sone	BHP Sone	BHP Sone	BHP Sone	BHP Sone	BHP Sone	BHP Sone	BHP Sone	BHP Sone	BHP Sone	BHP Sone	BHP Sone
1/4	1275	445 0.052 8.5	417 0.055 7.5	241 0.055 7.9									
	1400	497 0.069 11	472 0.071 9.5	340 0.076 9.5	243 0.071 9.7								
	1600	578 0.102 15.1	557 0.104 13.9	459 0.114 12.7	404 0.114 13.6	330 0.111 13.8	214 0.097 13.6						
	1870	687 0.16 19.2	669 0.16 19.2	592 0.18 17.4	554 0.18 16.5	513 0.18 16.5	463 0.18 17.3	400 0.18 18.3					
	2140	793 0.24 24	778 0.24 25	714 0.25 22	684 0.26 22	653 0.27 21	619 0.27 21	581 0.27 21	485 0.27 22				
	2245	835 0.28 26	820 0.28 28	760 0.29 24	732 0.3 24	703 0.31 24	672 0.31 23	639 0.32 22	560 0.32 24	451 0.3 25	267 0.26 24		
	2350	876 0.32 28	862 0.32 30	805 0.33 27	779 0.34 25	752 0.35 26	724 0.36 26	694 0.36 24	625 0.36 26	536 0.36 26	415 0.34 27		
	2525	944 0.4 33	932 0.4 33	879 0.41 33	856 0.41 29	832 0.42 29	807 0.43 29	780 0.44 29	723 0.45 28	655 0.45 29	569 0.44 30	457 0.42 30	
	2655	995 0.46 36	983 0.46 36	934 0.47 36	912 0.48 34	889 0.48 32	866 0.49 31	842 0.5 31	789 0.52 31	731 0.52 31	661 0.52 32	574 0.51 33	460 0.48 33

MAXIMUM MOTOR FRAME SIZE: 56

ACX | Size 120D

HP	RPM	STATIC PRESSURE (INCHES W.G.)											
		0	0.125	0.25	0.375	0.50	0.625	0.75	0.875	1.00	1.125	1.25	1.50
		CFM	CFM	CFM	CFM	CFM	CFM	CFM	CFM	CFM	CFM	CFM	CFM
		BHP Sone	BHP Sone	BHP Sone	BHP Sone	BHP Sone	BHP Sone	BHP Sone	BHP Sone	BHP Sone	BHP Sone	BHP Sone	BHP Sone
1/4	575	745 0.02 3.1	563 0.02 2.7										
	825	1068 0.06 6.3	940 0.06 5.4	817 0.07 5.6	633 0.07 4.9								
	1050	1360 0.12 9.2	1255 0.12 8.7	1163 0.13 7.9	1067 0.13 7.9	942 0.14 8.2							
	1300	1684 0.22 12.6	1598 0.23 12.6	1517 0.24 11.5	1444 0.25 10.8	1371 0.25 10.7	1284 0.26 11.3	1181 0.26 11.3	1068 0.26 10.1				
1/3	1365	1768 0.25 13.6	1686 0.27 13.6	1609 0.28 12.7	1537 0.28 11.7	1469 0.29 11.6	1393 0.30 11.7	1302 0.30 12.3	1200 0.30 11.7	1084 0.30 10.3			
	1430	1852 0.29 14.5	1774 0.30 14.5	1699 0.32 13.8	1629 0.32 12.9	1565 0.33 12.4	1497 0.34 12.5	1417 0.34 13.1	1324 0.35 13.3	1226 0.35 12.5	1099 0.34 11.3		
	1540	1994 0.36 16.4	1921 0.38 16.4	1852 0.39 15.7	1785 0.40 14.7	1723 0.41 13.9	1663 0.42 13.8	1598 0.42 14.0	1523 0.43 14.7	1437 0.43 14.8	1346 0.43 14.0	1245 0.43 12.6	
1/2	1650	2137 0.45 17.9	2068 0.46 17.9	2003 0.48 17.9	1940 0.49 16.8	1880 0.50 15.9	1824 0.51 15.5	1767 0.51 15.1	1705 0.52 15.6	1634 0.53 16.0	1555 0.53 16.5	1470 0.53 15.9	1265 0.53 13.5

MAXIMUM MOTOR FRAME SIZE: 56

NOTES:

1. Performance certified is for Installation Type A: Free inlet, free outlet.
2. Power rating (BHP) does not include transmission losses.
3. Performance ratings do not include the effects of appurtenances (accessories).
4. The sound ratings shown are loudness values in fan sones at 5 ft. (1.5 m) in a hemispherical free field calculated per AMCA Standard 301.
5. Values shown are for installation Type A: Free inlet fan hemispherical sone levels.

ACX | Size 140D

Outlet Area = 2.34 ft²

Fan Efficiency Grade: FEG67

HP	RPM	STATIC PRESSURE (INCHES W.G.)											
		0	0.125	0.25	0.375	0.5	0.625	0.75	0.875	1.00	1.25	1.50	1.75
		CFM	CFM	CFM	CFM	CFM	CFM	CFM	CFM	CFM	CFM	CFM	CFM
		BHP Sone	BHP Sone	BHP Sone	BHP Sone	BHP Sone	BHP Sone	BHP Sone	BHP Sone	BHP Sone	BHP Sone	BHP Sone	BHP Sone
1/4	475	850	584										
		0.02 2.2	0.02 2.0										
	550	984	762										
		0.03 3.2	0.03 3.0										
1/3	825	1477	1345	1183	1017								
		0.09 6.8	0.10 6.7	0.11 6.2	0.11 6.2								
	1105	1978	1883	1779	1659	1536	1415	1264					
		0.22 11.0	0.24 11.0	0.25 10.5	0.25 9.6	0.26 10.2	0.26 10.3	0.26 8.7					
1/2	1165	2085	1996	1898	1788	1670	1558	1433					
		0.26 12.0	0.28 12.0	0.29 11.6	0.30 10.7	0.30 10.8	0.30 11.6	0.30 10.6					
	1225	2193	2108	2016	1915	1803	1694	1586	1457				
		0.30 13.0	0.32 13.0	0.33 13.0	0.34 11.7	0.35 11.6	0.35 12.3	0.35 12.4	0.35 11.1				
3/4	1310	2345	2266	2181	2091	1989	1883	1783	1681	1559			
		0.37 14.4	0.39 14.4	0.41 14.8	0.42 13.8	0.42 13.3	0.43 13.4	0.43 14.2	0.43 13.9	0.43 12.1			
	1400	2506	2432	2354	2272	2181	2083	1985	1892	1796	1544		
		0.45 16.2	0.47 16.2	0.49 16.2	0.51 16.1	0.51 15.6	0.52 15.2	0.52 15.4	0.52 16.3	0.53 15.9	0.52 12.7		
1	1500	2685	2616	2544	2469	2388	2300	2208	2117	2031	1840		
		0.55 19.0	0.58 19.0	0.60 19.0	0.61 18.6	0.63 17.9	0.63 16.9	0.64 16.7	0.64 17.3	0.64 17.9	0.65 16.2		
	1605	2873	2809	2742	2673	2600	2522	2438	2351	2266	2104	1911	
		0.68 21	0.70 21	0.73 21	0.75 21	0.76 19.9	0.77 18.8	0.78 18.5	0.78 18.2	0.79 18.9	0.79 19.4	0.79 16.9	
1	1685	3016	2955	2892	2827	2758	2687	2609	2527	2445	2288	2125	1921
		0.79 23	0.81 23	0.84 23	0.86 23	0.88 22	0.89 21	0.90 19.7	0.90 19.5	0.91 19.6	0.91 21	0.92 19.9	0.91 16.7
	1765	3159	3101	3041	2979	2915	2848	2777	2701	2622	2468	2320	2150
		0.90 24	0.93 24	0.96 24	0.98 24	1.00 24	1.02 23	1.03 22	1.03 21	1.04 21	1.05 22	1.05 22	1.05 20

MAXIMUM MOTOR FRAME SIZE: 143T

ACX | Size 140DHP

HP	RPM	STATIC PRESSURE (INCHES W.G.)											
		0.50	0.625	0.75	0.875	1.00	1.25	1.50	1.75	2.00	2.25	2.50	2.75
		CFM	CFM	CFM	CFM	CFM	CFM	CFM	CFM	CFM	CFM	CFM	CFM
		BHP Sone	BHP Sone	BHP Sone	BHP Sone	BHP Sone	BHP Sone	BHP Sone	BHP Sone	BHP Sone	BHP Sone	BHP Sone	BHP Sone
1/4	1310	499											
		0.07 6.4											
	1750	870	811	747	677	600							
		0.17 11.6	0.17 12.2	0.17 12.4	0.17 10.9	0.16 10.4							
1/3	2015	1069	1018	966	913	857	731						
		0.25 14.7	0.26 13.9	0.26 14	0.26 14.9	0.26 15.0	0.25 12.4						
	2125	1147	1101	1052	1003	952	841	715					
		0.30 16.4	0.30 15.2	0.30 15	0.30 15.3	0.30 16.1	0.30 14.7	0.29 13.8					
1/2	2235	1224	1182	1136	1089	1043	943	830					
		0.34 17.8	0.35 16.9	0.35 16	0.35 16	0.35 16.5	0.35 16.7	0.34 14.2					
	2400	1337	1300	1259	1217	1173	1085	989	882				
		0.42 21	0.42 19.7	0.43 18.8	0.43 17.9	0.43 17.8	0.43 19.1	0.43 18.5	0.43 15.7				
3/4	2560	1445	1411	1375	1337	1296	1215	1130	1039	937	825		
		0.51 23	0.51 23	0.52 22	0.52 21	0.52 19.9	0.53 20	0.53 21	0.52 20	0.52 17.4	0.5 18.3		
	2790	1597	1567	1536	1503	1468	1394	1319	1242	1159	1070	973	
		0.65 28	0.66 26	0.66 26	0.67 25	0.67 24	0.68 23	0.68 23	0.68 24	0.68 24	0.67 21	0.66 21	
1	2920	1682	1654	1625	1594	1562	1493	1422	1349	1274	1194	1107	1014
		0.74 29	0.75 29	0.76 28	0.76 27	0.77 26	0.78 25	0.78 24	0.78 25	0.78 26	0.78 25	0.77 22	0.76 22

MAXIMUM MOTOR FRAME SIZE: 56

NOTES:

1. Performance certified is for Installation Type A: Free inlet, free outlet.
2. Power rating (BHP) does not include transmission losses.
3. Performance ratings do not include the effects of appurtenances (accessories).
4. The sound ratings shown are loudness values in fan sones at 5 ft. (1.5 m) in a hemispherical free field calculated per AMCA Standard 301.
5. Values shown are for installation Type A: Free inlet fan hemispherical sone levels.

ACX | Size 160D

Outlet Area = 2.53 ft²

Fan Efficiency Grade: FEG75

HP	RPM	STATIC PRESSURE (INCHES W.G.)											
		0	0.125	0.25	0.375	0.50	0.625	0.75	0.875	1.00	1.25	1.50	1.75
		CFM	CFM	CFM	CFM	CFM	CFM	CFM	CFM	CFM	CFM	CFM	CFM
		BHP Sone	BHP Sone	BHP Sone	BHP Sone	BHP Sone	BHP Sone	BHP Sone	BHP Sone	BHP Sone	BHP Sone	BHP Sone	BHP Sone
1/4	475	1321 0.03 3.2	1001 0.04 2.8										
	625	1738 0.07 5.5	1519 0.08 4.8	1235 0.08 4.9									
	775	2155 0.13 7.9	1987 0.14 7.6	1783 0.15 6.5	1551 0.15 7.0	1199 0.15 5.8							
	930	2586 0.23 10.6	2449 0.24 10.6	2296 0.25 9.6	2117 0.26 8.7	1927 0.26 9.2	1697 0.26 9.1						
1/3	975	2711 0.26 11.4	2582 0.27 11.4	2438 0.28 10.4	2273 0.30 9.7	2093 0.30 9.8	1898 0.30 10.0	1634 0.30 8.8					
	1020	2837 0.30 12.1	2713 0.31 12.1	2578 0.32 11.5	2425 0.33 10.4	2255 0.34 10.0	2078 0.35 10.6	1865 0.34 10.3	1547 0.33 9.0				
1/2	1100	3059 0.38 13.3	2945 0.39 13.3	2822 0.40 13.0	2687 0.41 12.0	2535 0.43 11.2	2376 0.43 11.4	2209 0.44 12.0	2006 0.43 11.5	1724 0.42 10.1			
	1180	3282 0.46 14.5	3176 0.48 14.5	3063 0.49 14.5	2942 0.50 13.6	2807 0.52 12.7	2661 0.53 12.3	2512 0.54 12.8	2354 0.54 13.2	2164 0.53 12.6			
3/4	1260	3504 0.57 16.2	3405 0.58 16.2	3301 0.59 16.2	3190 0.61 15.4	3070 0.62 14.5	2938 0.64 13.7	2800 0.65 13.6	2660 0.65 14.1	2510 0.65 14.5	2116 0.64 13.0		
	1340	3727 0.68 17.6	3634 0.70 17.6	3537 0.71 17.6	3435 0.73 17.2	3326 0.74 16.2	3207 0.76 15.3	3080 0.77 14.7	2949 0.78 14.7	2817 0.79 15.5	2515 0.78 15.5	2059 0.75 13.8	
1	1405	3907 0.78 18.6	3819 0.8 18.6	3727 0.82 18.6	3631 0.83 18.6	3529 0.85 17.8	3420 0.86 16.7	3303 0.88 16.3	3179 0.89 15.8	3054 0.90 16.2	2791 0.91 17.2	2453 0.89 16.5	
	1475	4102 0.91 20	4018 0.92 20	3931 0.94 20	3840 0.96 19.7	3745 0.97 19.4	3645 0.99 18.4	3537 1.01 17.6	3422 1.02 16.9	3304 1.04 16.8	3063 1.05 17.9	2786 1.05 18.2	2410 1.02 16.0

MAXIMUM MOTOR FRAME SIZE: 143T

ACX | Size 160DHP

Outlet Area = 2.53 ft²

Fan Efficiency Grade: FEG63

HP	RPM	STATIC PRESSURE (INCHES W.G.)											
		0.50	0.625	0.75	0.875	1.00	1.25	1.50	1.75	2.00	2.25	2.50	2.75
		CFM	CFM	CFM	CFM	CFM	CFM	CFM	CFM	CFM	CFM	CFM	CFM
		BHP Sone	BHP Sone	BHP Sone	BHP Sone	BHP Sone	BHP Sone	BHP Sone	BHP Sone	BHP Sone	BHP Sone	BHP Sone	BHP Sone
1/4	1100	1021 0.16 8.7	872 0.15 7.6										
	1225	1231 0.21 9.8	1133 0.21 10.2	1003 0.21 9.3	826 0.21 8.4								
	1300	1352 0.25 10.2	1263 0.25 11.1	1162 0.26 11.1	1029 0.26 9.8	850 0.24 9.0							
	1370	1464 0.29 11.0	1377 0.29 11.7	1291 0.30 12.4	1186 0.30 11.8	1051 0.30 9.7							
1/3	1435	1567 0.34 11.7	1482 0.33 12.0	1401 0.34 12.7	1314 0.34 12.8	1204 0.35 12.2							
	1545	1737 0.42 13.4	1658 0.42 12.9	1580 0.42 13.4	1505 0.42 14.2	1425 0.43 14.4	1208 0.43 11.9						
1/2	1655	1902 0.52 14.6	1830 0.52 14.4	1757 0.51 14.4	1685 0.51 14.9	1615 0.52 15.8	1454 0.53 15.5	1229 0.52 12.5					
	1770	2071 0.63 16.7	2006 0.64 16.2	1938 0.63 16.1	1869 0.63 16.1	1802 0.63 16.5	1669 0.64 17.4	1503 0.65 16.5	1280 0.63 13.6				
3/4	1890	2244 0.77 18.6	2185 0.77 17.9	2123 0.77 17.4	2059 0.77 17.9	1995 0.76 17.3	1871 0.77 18.4	1741 0.79 18.9	1575 0.79 17.6	1362 0.77 14.8			
	1980	2372 0.88 20	2317 0.89 19.7	2259 0.89 18.9	2199 0.89 18.7	2138 0.88 18.5	2017 0.88 18.8	1899 0.90 20	1764 0.91 20	1590 0.90 17.7	1374 0.88 16.3		
1	2075	2506 1.01 21	2454 1.02 21	2401 1.02 21	2345 1.02 19.9	2287 1.02 19.8	2169 1.01 19.8	2057 1.02 21	1941 1.04 22	1801 1.05 21	1626 1.04 18.5	1410 1.00 17.4	

MAXIMUM MOTOR FRAME SIZE: 143T

NOTES:

1. Performance certified is for Installation Type A: Free inlet, free outlet.
2. Power rating (BHP) does not include transmission losses.
3. Performance ratings do not include the effects of appurtenances (accessories).
4. The sound ratings shown are loudness values in fan sones at 5 ft. (1.5 m) in a hemispherical free field calculated per AMCA Standard 301.
5. Values shown are for installation Type A: Free inlet fan hemispherical sone levels.

ACX | Size 180D

Outlet Area = 3.37 ft²

Fan Efficiency Grade: FEG60

HP	RPM	STATIC PRESSURE (INCHES W.G.)													
		0	0.125	0.25	0.375	0.5	0.75	1.00	1.25	1.50	1.75	2.00	2.25		
		CFM	CFM	CFM	CFM	CFM	CFM	CFM	CFM	CFM	CFM	CFM	CFM	CFM	CFM
		BHP Sone	BHP Sone	BHP Sone	BHP Sone	BHP Sone	BHP Sone	BHP Sone	BHP Sone	BHP Sone	BHP Sone	BHP Sone	BHP Sone	BHP Sone	BHP Sone
1/4	475	2320	1826	1376											
		0.08 5.5	0.09 4.2	0.10 4.5											
		2809	2389	2036	1632										
1/3	575	0.15 8.0	0.16 6.5	0.17 6.4	0.17 6.2										
		3224	2857	2516	2225	1852									
		0.22 9.9	0.24 8.9	0.25 7.7	0.26 8.3	0.26 7.9									
1/2	690	3371	3020	2685	2409	2084									
		0.25 10.6	0.27 9.6	0.29 8.2	0.30 8.8	0.30 9.0									
		3542	3207	2882	2613	2328									
3/4	725	0.29 11.4	0.31 10.8	0.33 8.9	0.34 9.3	0.35 10.0									
		3810	3498	3192	2924	2681	2019								
		0.37 13.0	0.39 12.3	0.41 10.4	0.42 10	0.43 11.1	0.43 9.5								
1	830	4055	3761	3472	3203	2977	2440								
		0.44 14.3	0.47 13.9	0.48 11.8	0.50 11.2	0.51 11.8	0.53 12.1								
		4348	4073	3804	3541	3316	2864	2229							
1-1/2	890	0.54 15.8	0.57 15.8	0.59 13.9	0.61 12.6	0.62 12.6	0.64 14.0	0.63 11.3							
		4641	4383	4131	3880	3652	3250	2752	1968						
		0.66 17.6	0.69 17.6	0.71 15.9	0.73 14.2	0.75 14.0	0.77 15.0	0.79 15.0	0.71 12.1						
2	950	4885	4640	4400	4160	3933	3550	3119	2540						
		0.77 19.0	0.80 19	0.83 17.2	0.85 15.7	0.87 15.0	0.90 15.8	0.92 17.0	0.89 14.2						
		5105	4870	4640	4411	4187	3808	3422	2940	2215					
2	1000	0.88 20	0.91 20	0.94 19.1	0.96 17.2	0.98 16.1	1.01 16.6	1.04 17.9	1.05 17.0	0.95 14.2					
		5471	5252	5036	4823	4610	4229	3894	3501	3010	2273				
		1.08 22	1.12 22	1.15 22	1.18 20	1.20 18.8	1.23 17.9	1.26 19.1	1.29 20	1.28 18.0	1.15 15.8				
2	1045	5838	5632	5429	5230	5028	4649	4331	3998	3608	3117	2397			
		1.32 25	1.35 25	1.39 25	1.42 23	1.44 21	1.48 19.7	1.52 20	1.55 22	1.57 22	1.54 19.5	1.39 17.6			
		6131	5935	5741	5551	5360	4988	4670	4370	4026	3627	3115			
2	1120	1.53 27	1.56 27	1.60 27	1.63 25	1.66 23	1.71 22	1.75 21	1.78 22	1.81 24	1.82 23	1.75 20			
		6424	6237	6052	5869	5688	5326	5005	4722	4417	4071	3662	3137		
		1.76 29	1.80 29	1.83 29	1.87 27	1.90 26	1.95 23	1.99 23	2.03 23	2.06 25	2.09 26	2.08 24	1.99 21		

MAXIMUM MOTOR FRAME SIZE: 145T

ACX | Size 180DHP

Outlet Area = 3.37 ft²

Fan Efficiency Grade: FEG67

HP	RPM	STATIC PRESSURE (INCHES W.G.)													
		0.50	0.75	1.00	1.25	1.50	1.75	2.00	2.25	2.50	2.75	3.00	3.25		
		CFM	CFM	CFM	CFM	CFM	CFM	CFM	CFM	CFM	CFM	CFM	CFM	CFM	CFM
		BHP Sone	BHP Sone	BHP Sone	BHP Sone	BHP Sone	BHP Sone	BHP Sone	BHP Sone	BHP Sone	BHP Sone	BHP Sone	BHP Sone	BHP Sone	BHP Sone
1/4	775	1089													
		0.14 6.9													
		1597													
1/3	890	0.22 9.9													
		1755	1260												
		0.26 10.5	0.25 8.6												
1/2	980	1900	1488												
		0.30 10.8	0.30 10.8												
		2035	1700												
3/4	1025	0.34 11.6	0.34 12.3												
		2260	2010	1585											
		0.42 12.9	0.43 13.7	0.42 12.0											
1	1105	2476	2280	1969	1502										
		0.51 14.8	0.53 14.8	0.53 15.3	0.50 12.0										
		2701	2535	2300	1945	1451									
2	1270	0.63 16.9	0.64 15.9	0.65 16.9	0.65 15.6	0.59 12.8									
		2925	2772	2590	2325	1950									
		0.76 18.7	0.78 17.4	0.79 17.5	0.79 18.4	0.78 15.5									
2	1355	3096	2948	2792	2572	2270	1880								
		0.87 20	0.89 18.7	0.90 18.4	0.91 19.5	0.91 18.5	0.87 14.6								
		3281	3135	2994	2814	2569	2238	1843							
2	1420	1.00 22	1.02 19.8	1.04 19.2	1.05 20	1.05 20	1.04 18.1	0.98 15.4							
		3557	3413	3284	3143	2957	2718	2404	2046						
		1.21 25	1.24 22	1.26 21	1.28 21	1.29 22	1.29 22	1.28 20	1.22 17.0						
2	1490	3844	3702	3579	3457	3315	3132	2905	2615	2289					
		1.47 29	1.50 26	1.53 24	1.55 23	1.57 24	1.58 25	1.58 25	1.57 22	1.52 19.5					
		4065	3926	3804	3689	3568	3418	3230	3006	2721	2411	2004			
2	1595	1.70 33	1.73 28	1.76 26	1.78 25	1.81 25	1.82 25	1.83 27	1.82 27	1.81 25	1.76 21	1.63 20			
		4286	4150	4028	3918	3807	3683	3527	3339	3119	2842	2546	2178		
		1.94 36	1.98 31	2.01 29	2.04 28	2.06 27	2.08 27	2.10 28	2.10 28	2.10 28	2.08 26	2.03 22	1.91 22		

MAXIMUM MOTOR FRAME SIZE: 145T

NOTES:

1. Performance certified is for Installation Type A: Free inlet, free outlet.
2. Power rating (BHP) does not include transmission losses.
3. Performance ratings do not include the effects of appurtenances (accessories).
4. The sound ratings shown are loudness values in fan sones at 5 ft. (1.5 m) in a hemispherical free field calculated per AMCA Standard 301.
5. Values shown are for installation Type A: Free inlet fan hemispherical sone levels.

ACX | Size 210D

Outlet Area = 4.61 ft²

Fan Efficiency Grade: FEG56

HP	RPM	STATIC PRESSURE (INCHES W.G.)											
		0	0.125	0.25	0.375	0.50	0.625	0.75	1.00	1.25	1.50	1.75	2.00
		CFM	CFM	CFM	CFM	CFM	CFM	CFM	CFM	CFM	CFM	CFM	CFM
		BHP Sone	BHP Sone	BHP Sone	BHP Sone	BHP Sone	BHP Sone	BHP Sone	BHP Sone	BHP Sone	BHP Sone	BHP Sone	BHP Sone
1/4	480	3078	2673	2193	1535								
		0.15 7.0	0.17 6.2	0.18 6.1	0.18 5.2								
1/3	535	3431	3080	2646	2203	1471							
		0.21 8.7	0.23 7.9	0.25 6.9	0.26 7.2	0.24 6.3							
1/2	550	3527	3188	2766	2346	1709							
		0.23 9.2	0.25 8.5	0.27 7.2	0.28 7.8	0.26 6.5							
3/4	595	3816	3507	3125	2747	2311	1588						
		0.29 10.5	0.31 10.1	0.33 8.3	0.35 8.8	0.35 8.2	0.32 7.4						
1	650	4168	3890	3558	3199	2845	2407	1705					
		0.37 12.5	0.40 12.5	0.42 10.2	0.44 9.8	0.46 10.5	0.46 9.1	0.42 8.5					
1-1/2	680	4361	4096	3789	3439	3111	2739	2188					
		0.43 13.4	0.45 13.4	0.48 11.4	0.50 10.5	0.52 11.3	0.53 10.8	0.50 9.3					
2	720	4617	4369	4089	3758	3446	3120	2732					
		0.51 15.1	0.53 15.1	0.56 13.3	0.59 11.6	0.61 12.2	0.63 12.7	0.63 11.2					
3	770	4938	4707	4452	4154	3850	3562	3244	2298				
		0.62 17.0	0.65 17.0	0.68 15.7	0.70 13.7	0.73 13.3	0.76 14.3	0.77 14.3	0.72 11.8				
4	800	5130	4909	4667	4389	4089	3812	3520	2745				
		0.70 18.2	0.72 18.2	0.75 17.2	0.78 15.0	0.81 14.3	0.84 14.8	0.86 15.4	0.83 12.5				
5	855	5483	5277	5054	4808	4527	4257	3999	3412	2478			
		0.85 20	0.88 20	0.91 19.2	0.94 17.6	0.97 16.1	1.00 16.1	1.03 16.7	1.05 16.3	0.97 14.1			
6	900	5772	5577	5368	5141	4882	4616	4369	3848	3148			
		0.99 22	1.02 22	1.05 21	1.09 19.8	1.12 18.1	1.15 17.3	1.19 17.7	1.23 18.4	1.20 15.3			
7	975	6253	6073	5884	5681	5459	5213	4970	4514	4005	3292		
		1.26 25	1.29 25	1.33 25	1.36 23	1.40 22	1.44 20	1.47 19.6	1.54 21	1.56 20	1.50 17.5		
8	1010	6477	6304	6122	5929	5721	5488	5248	4806	4337	3766	2905	
		1.40 27	1.44 27	1.47 27	1.51 26	1.54 24	1.58 22	1.62 21	1.69 22	1.73 22	1.72 19.1	1.6 18.2	
9	1075	6894	6732	6563	6385	6196	5989	5765	5333	4918	4455	3864	3028
		1.69 31	1.73 31	1.76 31	1.80 29	1.84 27	1.88 25	1.92 24	2.00 23	2.07 24	2.10 24	2.06 20	1.92 20

MAXIMUM MOTOR FRAME SIZE: 145T

ACX | Size 210DHP

Outlet Area = 4.61 ft²

Fan Efficiency Grade: FEG60

HP	RPM	STATIC PRESSURE (INCHES W.G.)											
		0.50	0.75	1.00	1.25	1.50	1.75	2.00	2.25	2.50	2.75	3.00	3.25
		CFM	CFM	CFM	CFM	CFM	CFM	CFM	CFM	CFM	CFM	CFM	CFM
		BHP Sone	BHP Sone	BHP Sone	BHP Sone	BHP Sone	BHP Sone	BHP Sone	BHP Sone	BHP Sone	BHP Sone	BHP Sone	BHP Sone
1/2	700	2532	1925										
		0.37 9.9	0.40 10.1										
3/4	775	3001	2538	1900									
		0.48 11.4	0.52 12.5	0.53 12.0									
1	810	3215	2788	2238									
		0.53 12.4	0.59 12.8	0.61 12.9									
1-1/2	875	3605	3214	2779	2217								
		0.65 14.5	0.71 13.7	0.76 15.1	0.77 14.5								
2	900	3752	3371	2968	2453								
		0.70 15.2	0.76 14.5	0.82 15.4	0.84 15.3								
3	970	4152	3803	3452	3041	2541							
		0.86 18.2	0.92 16.2	0.99 16.8	1.04 17.9	1.05 17.3							
4	1050	4593	4287	3960	3629	3231	2766						
		1.06 21	1.14 19.1	1.21 18.6	1.28 19.3	1.32 20	1.33 19.4						
5	1110	4916	4640	4329	4024	3692	3291	2836					
		1.23 24	1.31 21	1.39 20	1.47 20	1.53 21	1.57 21	1.57 21					
6	1150	5129	4870	4574	4278	3974	3617	3204	2695				
		1.35 25	1.44 23	1.52 21	1.60 21	1.68 23	1.73 23	1.75 22	1.72 22				
7	1220	5498	5263	4995	4711	4435	4139	3792	3401	2941			
		1.58 28	1.69 26	1.78 24	1.86 23	1.95 23	2.02 25	2.07 25	2.09 25	2.07 25			
8	1300	5915	5701	5463	5200	4936	4676	4395	4069	3706	3310	2629	
		1.88 32	2.00 30	2.10 28	2.19 26	2.28 25	2.37 26	2.45 27	2.51 28	2.53 27	2.53 27	2.39 26	
9	1395	6405	6210	6001	5768	5520	5275	5032	4775	4482	4155	3806	3401
		2.29 36	2.42 35	2.53 32	2.64 30	2.73 29	2.83 28	2.93 29	3.01 30	3.08 31	3.12 31	3.13 30	3.10 30

MAXIMUM MOTOR FRAME SIZE: 182T

NOTES:

- Performance certified is for Installation Type A: Free inlet, free outlet.
- Power rating (BHP) does not include belt drive losses.
- Performance ratings do not include the effects of appurtenances in the airstream.
- The sound ratings shown are loudness values in fan sones at 5 ft. (1.5 m) in a hemispherical free field calculated per AMCA Standard 301.
- Values shown are for installation Type A: Free inlet fan hemispherical sone levels.

ACX | Size 240D

Outlet Area = 5.60 ft²

Fan Efficiency Grade: FEG60

HP	RPM	STATIC PRESSURE (INCHES W.G.)													
		0	0.125	0.25	0.375	0.50	0.625	0.75	0.875	1.00	1.25	1.50	1.75		
		CFM	CFM	CFM	CFM	CFM	CFM	CFM	CFM	CFM	CFM	CFM	CFM	CFM	CFM
		BHP Sone	BHP Sone	BHP Sone	BHP Sone	BHP Sone	BHP Sone	BHP Sone	BHP Sone	BHP Sone	BHP Sone	BHP Sone	BHP Sone	BHP Sone	BHP Sone
1/4	410	4128	3525	2834	1981										
		0.16 6.0	0.20 5.4	0.22 5.8	0.21 4.7										
1/3	435	4380	3809	3180	2487										
		0.20 6.6	0.24 6.1	0.26 6.2	0.26 5.4										
1/2	460	4631	4089	3525	2886	1850									
		0.23 7.4	0.28 6.9	0.30 6.7	0.31 6.7	0.28 5.8									
3/4	480	4833	4312	3789	3168	2444									
		0.26 7.9	0.31 7.5	0.34 7.1	0.35 7.5	0.35 6.3									
1	530	5336	4864	4405	3856	3315	2575								
		0.35 9.3	0.41 9.1	0.44 8.5	0.47 8.8	0.47 8.8	0.46 7.7								
1-1/2	550	5537	5082	4640	4134	3600	3002								
		0.40 9.9	0.45 9.7	0.49 8.9	0.52 9.3	0.53 9.5	0.53 8.2								
2	580	5839	5407	4987	4538	4010	3516	2806							
		0.46 10.9	0.52 10.8	0.57 10.0	0.60 10.0	0.61 10.6	0.62 10.3	0.60 9.2							
3	625	6292	5891	5497	5106	4634	4164	3683	2992						
		0.58 12.5	0.65 12.5	0.70 12.0	0.73 11.6	0.76 12.0	0.77 12.5	0.78 11.5	0.75 10.8						
4	650	6544	6158	5777	5406	4977	4505	4073	3538						
		0.65 13.3	0.72 13.3	0.78 12.8	0.82 12.5	0.85 12.6	0.87 13.4	0.87 13.1	0.87 11.6						
5	690	6947	6583	6222	5874	5502	5059	4634	4218	3688					
		0.78 14.9	0.86 14.9	0.92 14.4	0.96 14.0	1.00 13.9	1.02 14.7	1.04 14.9	1.05 14.5	1.04 13.0					
6	750	7551	7216	6883	6558	6236	5875	5460	5070	4695	3654				
		1.01 16.8	1.09 16.8	1.16 16.5	1.21 16.0	1.26 15.8	1.29 15.9	1.32 16.6	1.33 16.8	1.34 16.6	1.31 14.7				
7	790	7954	7636	7320	7008	6704	6384	6013	5618	5259	4467				
		1.17 18.1	1.26 18.1	1.34 17.6	1.40 17.2	1.45 16.9	1.49 16.8	1.53 17.3	1.55 17.8	1.56 18.3	1.57 16.3				
8	840	8457	8158	7860	7565	7278	6989	6674	6313	5943	5271	4415			
		1.41 19.8	1.50 19.8	1.59 19.6	1.66 19.1	1.72 18.7	1.77 18.6	1.81 18.6	1.84 18.8	1.86 19.7	1.89 19.7	1.87 17.1			
9	870	8759	8470	8183	7897	7618	7342	7051	6721	6360	5697	4974	3809		
		1.57 21	1.67 21	1.75 21	1.83 19.8	1.89 19.5	1.94 19.2	1.99 19.2	2.03 19.7	2.06 20	2.09 21	2.09 18.9	1.97 18.0		

MAXIMUM MOTOR FRAME SIZE: 145T

ACX | Size 240DHP

Outlet Area = 5.60 ft²

Fan Efficiency Grade: FEG67

HP	RPM	STATIC PRESSURE (INCHES W.G.)													
		0.50	0.625	0.75	0.875	1.00	1.25	1.50	1.75	2.00	2.25	2.50	2.75		
		CFM	CFM	CFM	CFM	CFM	CFM	CFM	CFM	CFM	CFM	CFM	CFM	CFM	CFM
		BHP Sone	BHP Sone	BHP Sone	BHP Sone	BHP Sone	BHP Sone	BHP Sone	BHP Sone	BHP Sone	BHP Sone	BHP Sone	BHP Sone	BHP Sone	BHP Sone
1/2	600	3080	2656	2117											
		0.41 8.5	0.43 8.7	0.43 8.5											
3/4	640	3471	3120	2692	2149										
		0.47 9.1	0.50 9.8	0.52 9.5	0.52 9.6										
1	670	3750	3435	3064	2621										
		0.53 9.7	0.57 10.3	0.59 10.5	0.60 10.3										
1-1/2	725	4238	3970	3671	3325	2922									
		0.64 11.2	0.68 11.2	0.72 11.7	0.75 11.8	0.76 11.5									
2	750	4451	4201	3924	3611	3248									
		0.70 11.9	0.74 11.6	0.78 12.2	0.82 12.5	0.84 12.6									
3	805	4909	4690	4450	4187	3896	3191								
		0.83 13.4	0.88 12.9	0.93 13.0	0.97 13.8	1.01 14.1	1.04 13.6								
4	860	5357	5157	4947	4718	4471	3896	3178							
		0.98 15.2	1.04 14.6	1.09 14.4	1.14 14.5	1.19 15.2	1.25 15.6	1.27 14.9							
5	925	5878	5693	5506	5309	5096	4625	4059	3371						
		1.18 17.1	1.24 16.5	1.30 16.2	1.36 15.9	1.41 15.9	1.51 17.0	1.57 17.0	1.57 16.6						
6	950	6076	5896	5715	5528	5326	4883	4362	3741						
		1.27 18.0	1.33 17.4	1.39 16.7	1.45 16.7	1.51 16.6	1.61 17.7	1.68 18.1	1.71 17.4						
7	1015	6589	6419	6251	6081	5904	5518	5084	4579	3991	3238				
		1.51 19.9	1.58 19.2	1.64 18.7	1.71 18.1	1.77 18.0	1.89 18.4	1.99 19.5	2.06 19.7	2.09 18.9	2.04 18.9				
8	1100	7250	7093	6936	6781	6625	6295	5931	5530	5072	4551	3940			
		1.88 23	1.95 22	2.01 21	2.08 21	2.16 21	2.30 20	2.42 21	2.53 22	2.61 22	2.65 21	2.64 21			
9	1165	7750	7602	7454	7307	7160	6861	6537	6184	5797	5360	4869	4311		
		2.21 25	2.27 24	2.34 24	2.41 24	2.49 23	2.64 23	2.78 23	2.91 23	3.02 24	3.10 24	3.15 23	3.15 24		

MAXIMUM MOTOR FRAME SIZE: 182T

NOTES:

- Performance certified is for Installation Type A: Free inlet, free outlet.
- Power rating (BHP) does not include transmission losses.
- Performance ratings do not include the effects of appurtenances (accessories).
- The sound ratings shown are loudness values in fan sones at 5 ft. (1.5 m) in a hemispherical free field calculated per AMCA Standard 301.
- Values shown are for installation Type A: Free inlet fan hemispherical sone levels.

ACX | Size 300D

Outlet Area = 7.88 ft²

Fan Efficiency Grade: FEG67

HP	RPM	STATIC PRESSURE (INCHES W.G.)											
		0	0.125	0.25	0.50	0.75	1.00	1.25	1.50	1.75	2.00	2.25	2.50
		CFM	CFM	CFM	CFM	CFM	CFM	CFM	CFM	CFM	CFM	CFM	CFM
		BHP Sone	BHP Sone	BHP Sone	BHP Sone	BHP Sone	BHP Sone	BHP Sone	BHP Sone	BHP Sone	BHP Sone	BHP Sone	BHP Sone
1/4	330	5000	4086	3166									
		0.14 4.0	0.17 5.4	0.20 5.7									
1/3	360	5454	4579	3880									
		0.18 4.6	0.22 6.1	0.26 6.7									
1/2	380	5757	4902	4264									
		0.22 5.3	0.25 6.5	0.29 7.3									
1/2	405	6136	5303	4714									
		0.26 5.9	0.30 7.1	0.34 8.0									
1/2	430	6514	5702	5151	3222								
		0.31 6.5	0.35 7.7	0.40 8.8	0.43 8.6								
3/4	450	6818	6021	5497	3978								
		0.36 7.0	0.40 8.3	0.45 9.4	0.52 9.6								
3/4	470	7120	6339	5834	4571								
		0.41 7.7	0.45 8.8	0.50 10.0	0.59 10.3								
1	520	7878	7138	6652	5702	3467							
		0.55 9.1	0.60 10.0	0.65 11.5	0.77 12.8	0.71 10.8							
1	530	8030	7298	6814	5892	4107							
		0.59 9.4	0.63 10.1	0.68 11.9	0.80 13.1	0.81 12.5							
1-1/2	565	8560	7855	7375	6529	5292							
		0.71 10.5	0.75 10.9	0.81 12.4	0.94 14.1	1.03 14.1							
2	600	9090	8412	7934	7144	6215	3958						
		0.85 11.6	0.90 12.0	0.96 13.2	1.09 14.9	1.21 15.2	1.09 13.1						
2	650	9848	9203	8731	8004	7233	6039						
		1.08 13.4	1.13 13.4	1.19 14.4	1.33 15.9	1.48 17.4	1.56 15.9						
2	670	10150	9519	9050	8338	7602	6609	4338					
		1.18 14.3	1.23 14.3	1.30 15.1	1.44 16.4	1.59 17.8	1.71 17.4	1.50 14.8					
3	715	10832	10228	9769	9077	8403	7659	6398					
		1.44 16.2	1.49 16.2	1.56 16.1	1.71 17.2	1.86 19.1	2.02 19.5	2.08 17.5					
3	750	11362	10779	10328	9643	9013	8342	7414	5829				
		1.66 17.2	1.71 17.2	1.78 17.2	1.94 17.8	2.10 19.4	2.27 21	2.39 19.3	2.30 18.4				
5	820	12423	11876	11443	10766	10203	9604	8973	8079	6697			
		2.17 20	2.23 20	2.30 19.7	2.46 19.1	2.64 19.9	2.82 22	3.00 22	3.13 20	3.06 19.5			
5	850	12878	12345	11919	11244	10697	10129	9540	8823	7693	5744		
		2.41 21	2.47 21	2.55 21	2.72 20	2.90 21	3.09 22	3.28 24	3.44 23	3.49 20	3.13 20		
	970	14696	14215	13817	13157	12637	12164	11666	11155	10613	9918	8909	7602
		3.59 26	3.65 26	3.73 26	3.91 25	4.12 25	4.33 25	4.54 27	4.76 29	4.97 29	5.14 28	5.20 25	4.99 25

MAXIMUM MOTOR FRAME SIZE: 184T

ACX | Size 300DHP

Outlet Area = 7.88 ft²

Fan Efficiency Grade: FEG71

HP	RPM	STATIC PRESSURE (INCHES W.G.)											
		0.50	0.75	1.00	1.25	1.50	1.75	2.00	2.25	2.50	2.75	3.00	3.25
		CFM	CFM	CFM	CFM	CFM	CFM	CFM	CFM	CFM	CFM	CFM	CFM
		BHP Sone	BHP Sone	BHP Sone	BHP Sone	BHP Sone	BHP Sone	BHP Sone	BHP Sone	BHP Sone	BHP Sone	BHP Sone	BHP Sone
1/2	500	3881											
		0.47 8.9											
3/4	515	4121	2721										
		0.51 9.5	0.52 9.6										
3/4	550	4645	3617										
		0.60 10.7	0.66 10.5										
1	580	5066	4201										
		0.69 11.4	0.76 10.9										
1	610	5469	4715	3587									
		0.78 11.9	0.86 11.5	0.88 12.0									
1-1/2	640	5860	5190	4279									
		0.88 12.5	0.97 13.1	1.03 12.8									
1-1/2	700	6617	6061	5372	4450								
		1.10 14.2	1.22 15.4	1.31 14.2	1.35 14.5								
2	735	7048	6537	5931	5168	4054							
		1.25 15.6	1.37 15.8	1.48 16.3	1.56 15.6	1.52 15.9							
2	750	7230	6737	6160	5445	4469							
		1.31 16.0	1.44 16.4	1.56 16.9	1.64 15.8	1.65 16.5							
3	810	7950	7512	7023	6448	5753	4824						
		1.60 17.6	1.75 17.7	1.88 18.8	2.00 18.3	2.08 17.7	2.07 18.2						
3	900	9007	8629	8222	7774	7261	6666	5946	4959				
		2.10 21	2.29 20	2.45 20	2.59 22	2.72 21	2.82 20	2.88 21	2.79 21				
5	925	9297	8933	8543	8118	7640	7090	6448	5636	4430			
		2.25 23	2.46 22	2.63 21	2.77 23	2.91 23	3.02 21	3.11 21	3.10 22	2.90 21			
	1000	10160	9831	9483	9112	8711	8266	7763	7193	6515	5629		
		2.77 25	3.00 25	3.20 25	3.37 25	3.52 26	3.67 27	3.80 24	3.90 24	3.94 24	3.85 25		
	1100	11297	11005	10699	10379	10041	9680	9289	8858	8381	7850	7234	6474
		3.57 29	3.83 30	4.07 29	4.29 29	4.48 29	4.65 31	4.81 31	4.97 30	5.10 27	5.20 28	5.25 28	5.18 29

MAXIMUM MOTOR FRAME SIZE: 184T

NOTES:

- Performance certified is for Installation Type A: Free inlet, free outlet.
- Power rating (BHP) does not include transmission losses.
- Performance ratings do not include the effects of appurtenances (accessories).
- The sound ratings shown are loudness values in fan sones at 5 ft. (1.5 m) in a hemispherical free field calculated per AMCA Standard 301.
- Values shown are for Installation Type A: Free inlet fan hemispherical sone levels.

ACX | Size 360D

Outlet Area = 10.50 ft²

Fan Efficiency Grade: FEG60

HP	RPM	STATIC PRESSURE (INCHES W.G.)													
		0	0.125	0.25	0.375	0.50	0.625	0.75	0.875	1.00	1.25	1.50	1.75		
		CFM BHP Sone	CFM BHP Sone	CFM BHP Sone	CFM BHP Sone	CFM BHP Sone	CFM BHP Sone	CFM BHP Sone	CFM BHP Sone	CFM BHP Sone	CFM BHP Sone	CFM BHP Sone	CFM BHP Sone	CFM BHP Sone	
1/3	250	7390	5833	2981											
		0.21 5.4	0.25 4.1	0.22 3.7											
	280	8277	6936	4828											
1/2	300	0.29 6.9	0.34 5.5	0.35 5.2											
		8868	7627	5885											
	320	0.36 7.8	0.42 6.5	0.44 6.2											
3/4		9459	8302	6836	4624										
		0.43 9.0	0.50 7.7	0.53 6.9	0.49 6.6										
	340	10050	8966	7703	5758										
1		0.52 9.9	0.59 9.0	0.63 7.6	0.62 7.6										
		10789	9786	8688	7084	5047									
	365	0.64 11.2	0.72 10.4	0.77 8.9	0.78 8.9	0.72 8.3									
1-1/2		11233	10272	9239	7824	5964									
		0.72 12.2	0.81 11.3	0.86 9.6	0.89 9.5	0.85 9.2									
	400	11824	10915	9949	8733	7041	5076								
2		0.84 13.1	0.93 12.9	1.00 10.9	1.03 10.2	1.01 10.6	0.91 10.0								
		12415	11552	10640	9582	8103	6389								
	420	0.97 14.7	1.07 14.1	1.14 12.1	1.19 11.2	1.19 11.6	1.13 10.8								
3		13598	12814	11989	11120	10001	8555	6994							
		1.28 17.0	1.39 17.0	1.48 15.0	1.53 13.7	1.57 13.4	1.56 13.8	1.49 13.1							
	460	14189	13439	12652	11837	10859	9590	8098	6484						
4		1.46 18.1	1.57 18.1	1.66 16.6	1.73 15.3	1.77 14.6	1.79 15.1	1.74 14.3	1.62 14.0						
		14928	14217	13474	12709	11860	10764	9430	8018	6349					
	505	1.69 19.7	1.82 19.7	1.92 18.6	1.99 17.2	2.05 16.2	2.08 16.4	2.06 16.3	1.99 15.2	1.82 15.1					
5		16258	15608	14933	14236	13518	12686	11646	10426	9124					
		2.19 22	2.32 22	2.44 22	2.53 20	2.60 19.4	2.66 18.9	2.69 19.4	2.67 20	2.60 18.5					
	550	16997	16376	15733	15070	14395	13657	12756	11692	10454	7837				
7		2.50 25	2.64 25	2.77 24	2.87 23	2.95 22	3.01 21	3.06 21	3.08 21	3.03 21	2.79 19.6				
		19214	18667	18105	17527	16937	16340	15706	14979	14119	12069	9860			
	650	3.61 31	3.78 31	3.92 31	4.05 29	4.16 29	4.25 28	4.32 28	4.39 27	4.43 28	4.39 28	4.19 24			
9		20249	19730	19199	18654	18097	17536	16958	16334	15613	13865	11781	9583		
		4.23 34	4.40 34	4.56 34	4.70 34	4.83 32	4.93 32	5.01 31	5.08 31	5.15 31	5.20 31	5.07 30	4.76 27		
	685														

MAXIMUM MOTOR FRAME SIZE: 184T

ACX | Size 360DHP

Outlet Area = 10.50 ft²

Fan Efficiency Grade: FEG67

HP	RPM	STATIC PRESSURE (INCHES W.G.)													
		0.50	0.75	1.00	1.25	1.50	1.75	2.00	2.25	2.50	2.75	3.00	3.25		
		CFM	CFM	CFM	CFM	CFM	CFM	CFM	CFM	CFM	CFM	CFM	CFM		
		BHP Sone	BHP Sone	BHP Sone	BHP Sone	BHP Sone	BHP Sone	BHP Sone	BHP Sone	BHP Sone	BHP Sone	BHP Sone	BHP Sone		
1	430	6426	4046												
		0.83 9.3	0.82 7.9												
	460	7282	5562												
		0.99 10.0	1.05 8.8												
1-1/2	500	8354	7039	4872											
		1.21 11.4	1.34 11.7	1.30 10.4											
	525	9001	7821	6151											
		1.35 12.3	1.52 13.1	1.56 11.2											
2	550	9631	8545	7169	4906										
		1.51 13.8	1.71 13.9	1.79 13.2	1.67 12.0										
	580	10368	9372	8214	6549										
		1.72 15.6	1.95 14.9	2.08 15.7	2.09 13.4										
3	650	12024	11202	10283	9234	7842	5754								
		2.27 21	2.55 19.1	2.78 19.1	2.93 19.6	2.96 16.9	2.74 16.5								
	660	12255	11455	10558	9553	8254	6364								
		2.36 22	2.65 20	2.89 19.1	3.05 20	3.10 17.8	2.98 17.2								
5	750	14293	13648	12921	12132	11284	10289	9032	7308						
		3.27 28	3.60 26	3.92 24	4.20 23	4.41 25	4.53 24	4.55 21	4.38 21						
	785	15072	14469	13799	13063	12287	11431	10404	9111	7383					
		3.69 30	4.03 27	4.37 26	4.69 24	4.94 25	5.12 26	5.21 24	5.20 22	4.96 22					
7-1/2	860	16721	16189	15616	14988	14312	13607	12851	11991	10969	9701	8092			
		4.70 33	5.07 31	5.44 29	5.82 28	6.17 27	6.45 27	6.66 29	6.81 28	6.86 27	6.83 26	6.52 25			
	900	17592	17090	16557	15978	15351	14693	14007	13265	12420	11427	10217	8705		
		5.31 36	5.71 34	6.09 32	6.49 31	6.87 30	7.21 29	7.47 30	7.68 31	7.82 31	7.86 28	7.83 27	7.55 27		

MAXIMUM MOTOR FRAME SIZE: 213T

NOTES:

- Performance certified is for Installation Type A: Free inlet, free outlet.
- Power rating (BHP) does not include transmission losses.
- Performance ratings do not include the effects of appurtenances (accessories).
- The sound ratings shown are loudness values in fan sones at 5 ft. (1.5 m) in a hemispherical free field calculated per AMCA Standard 301.
- Type A: Free inlet fan hemispherical sone levels.

ACX | Size 420D

Outlet Area = 11.40 ft²

Fan Efficiency Grade: FEG63

HP	RPM	STATIC PRESSURE (INCHES W.G.)											
		0	0.125	0.25	0.375	0.50	0.625	0.75	1.00	1.25	1.50	1.75	2.00
		CFM	CFM	CFM	CFM	CFM	CFM	CFM	CFM	CFM	CFM	CFM	CFM
		BHP Sone	BHP Sone	BHP Sone	BHP Sone	BHP Sone	BHP Sone	BHP Sone	BHP Sone	BHP Sone	BHP Sone	BHP Sone	BHP Sone
1/2	230	9414	7930	5813									
		0.31 5.3	0.37 4.3	0.40 4.4									
3/4	250	10232	8872	7303									
		0.40 6.3	0.47 5.2	0.51 5.2									
1	270	11051	9794	8433	5934								
		0.50 7.3	0.58 6.3	0.63 5.9	0.63 5.2								
1-1/2	285	11665	10476	9220	7415								
		0.59 8.1	0.68 7.2	0.73 6.4	0.77 6.8								
2	300	12279	11152	9983	8553	5471							
		0.69 8.9	0.78 8.2	0.84 7.1	0.88 7.6	0.79 6.1							
3	315	12893	11822	10721	9463	7218							
		0.80 9.9	0.89 9.4	0.96 7.8	1.01 8.3	1.01 7.4							
4	330	13507	12486	11440	10291	8641	5396						
		0.92 10.9	1.02 10.2	1.09 8.8	1.15 8.9	1.19 9.0	0.98 7.0						
5	360	14734	13802	12846	11853	10712	8855						
		1.19 12.7	1.31 12.5	1.39 10.7	1.45 10.0	1.51 10.8	1.54 10.1						
6	370	15144	14237	13308	12355	11280	9751	7010					
		1.29 13.5	1.41 13.5	1.50 11.5	1.57 10.8	1.63 11.4	1.68 11.3	1.51 8.9					
7	395	16167	15319	14450	13574	12621	11530	9759					
		1.57 15.2	1.70 15.2	1.81 13.4	1.88 12.2	1.95 12.2	2.01 13.0	2.04 12.2					
8	430	17599	16822	16028	15227	14403	13498	12464	8417				
		2.03 17.3	2.17 17.3	2.29 16.0	2.39 14.5	2.46 14.1	2.53 14.3	2.59 15.0	2.41 11.7				
9	455	18623	17889	17141	16383	15621	14804	13918	11167				
		2.40 18.7	2.55 18.7	2.69 17.8	2.80 16.3	2.88 15.4	2.95 15.4	3.03 16.1	3.11 15.3				
10	500	20464	19797	19120	18433	17744	17045	16298	14606	11622			
		3.19 22	3.36 22	3.51 21	3.64 20	3.75 18.7	3.83 17.9	3.91 17.9	4.07 19.1	4.07 16.9			
11	540	22102	21485	20860	20227	19588	18950	18297	16865	15089	11869		
		4.01 25	4.20 25	4.37 25	4.52 23	4.65 22	4.75 21	4.84 21	5.02 21	5.17 22	5.03 18.6		
12	580	23739	23165	22585	21998	21404	20810	20215	18955	17555	15664	12437	
		4.97 28	5.17 28	5.36 28	5.53 27	5.68 26	5.80 24	5.91 24	6.10 24	6.29 25	6.45 25	6.17 20	
13	615	25171	24630	24084	23532	22975	22413	21854	20709	19455	18048	15960	12702
		5.93 31	6.14 31	6.34 31	6.52 31	6.69 29	6.84 27	6.96 27	7.17 26	7.37 27	7.57 28	7.71 27	7.23 22

MAXIMUM MOTOR FRAME SIZE: 213T

ACX | Size 480D

Outlet Area = 14.11 ft²

Fan Efficiency Grade: FEG63

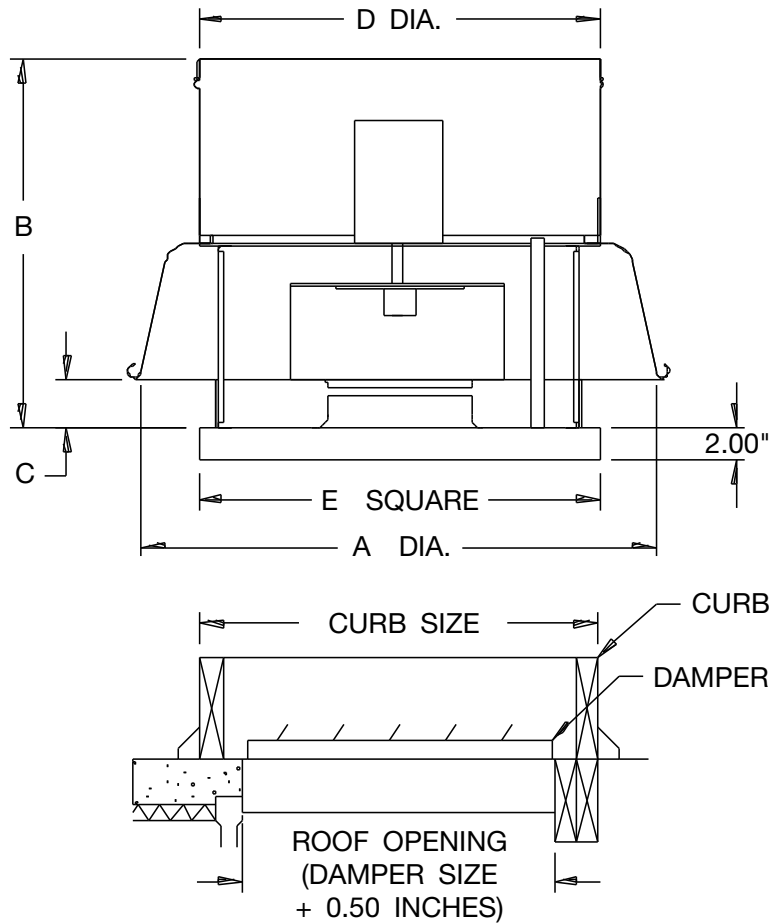
HP	RPM	STATIC PRESSURE (INCHES W.G.)											
		0	0.125	0.25	0.375	0.50	0.625	0.75	0.875	1.00	1.25	1.50	1.75
		CFM	CFM	CFM	CFM	CFM	CFM	CFM	CFM	CFM	CFM	CFM	CFM
		BHP Sone	BHP Sone	BHP Sone	BHP Sone	BHP Sone	BHP Sone	BHP Sone	BHP Sone	BHP Sone	BHP Sone	BHP Sone	BHP Sone
1/2	190	10494	8604	4418									
		0.30 4.8	0.37 4.0	0.32 3.0									
3/4	210	11599	9890	7393									
		0.41 5.7	0.48 4.8	0.51 4.5									
1	225	12427	10824	8907									
		0.50 6.5	0.58 5.5	0.64 6.0									
1-1/2	240	13256	11745	10130	6645								
		0.61 7.4	0.69 6.4	0.76 6.8	0.70 5.0								
2	250	13808	12355	10874	8149								
		0.69 8.0	0.78 6.9	0.85 7.2	0.85 5.5								
3	265	14636	13265	11921	9923								
		0.82 8.7	0.91 7.8	1.00 7.7	1.04 7.6								
4	285	15741	14466	13228	11702	8899							
		1.02 10.1	1.12 9.4	1.21 8.5	1.28 9.1	1.24 7.0							
5	300	16570	15358	14177	12864	10809	6905						
		1.18 11.2	1.30 10.6	1.39 9.4	1.48 10.1	1.50 9.1	1.24 7.5						
6	320	17674	16538	15419	14291	12753	10144						
		1.44 12.8	1.56 12.5	1.66 10.5	1.76 10.9	1.83 11.2	1.76 8.9						
7	335	18503	17418	16341	15292	13984	12038	8684					
		1.65 13.7	1.77 13.7	1.89 11.8	1.99 11.4	2.08 12.3	2.09 11.2	1.84 9.5					
8	350	19331	18293	17257	16261	15120	13570	11035					
		1.88 14.4	2.01 14.4	2.13 12.6	2.24 12.4	2.34 13.3	2.40 13.2	2.30 10.3					
9	380	20988	20031	19076	18147	17208	16057	14548	12193	8837			
		2.41 16.6	2.55 16.6	2.68 15.4	2.81 14.4	2.93 14.7	3.02 15.6	3.07 15.4	2.96 12.5	2.54 11.9			
10	420	23197	22332	21467	20607	19781	18915	17874	16582	14786			
		3.25 19.0	3.41 19.0	3.56 18.8	3.70 17.0	3.84 16.9	3.96 16.9	4.07 17.9	4.14 18.1	4.11 16.2			
11	455	25131	24331	23533	22735	21957	21194	20377	19407	18246	14685		
		4.13 22	4.31 22	4.47 22	4.63 19.7	4.78 18.7	4.92 18.6	5.05 19.5	5.17 19.9	5.25 19.9	5.10 16.4		
12	500	27616	26889	26162	25435	24710	24011	23317	22585	21748	19643	16297	11145
		5.48 24	5.68 24	5.86 24	6.04 24	6.21 22	6.37 22	6.53 21	6.67 22	6.80 23	6.99 23	6.79 18.8	5.67 18.5
13	520	28721	28021	27322	26624	25926	25243	24579	23899	23161	21338	18766	14603
		6.17 26	6.37 26	6.56 26	6.75 25	6.92 24	7.10 23	7.26 22	7.42 23	7.57 23	7.80 25	7.83 23	7.15 20

MAXIMUM MOTOR FRAME SIZE: 213T

NOTES:

- Performance certified is for Installation Type A: Free inlet, free outlet.
- Power rating (BHP) does not include transmission losses.
- Performance ratings do not include the effects of appurtenances (accessories).
- The sound ratings shown are loudness values in fan sones at 5 ft. (1.5 m) in a hemispherical free field calculated per AMCA Standard 301.
- Values shown are for Installation Type A: Free inlet fan hemispherical sone levels.

ACXD



Notes:

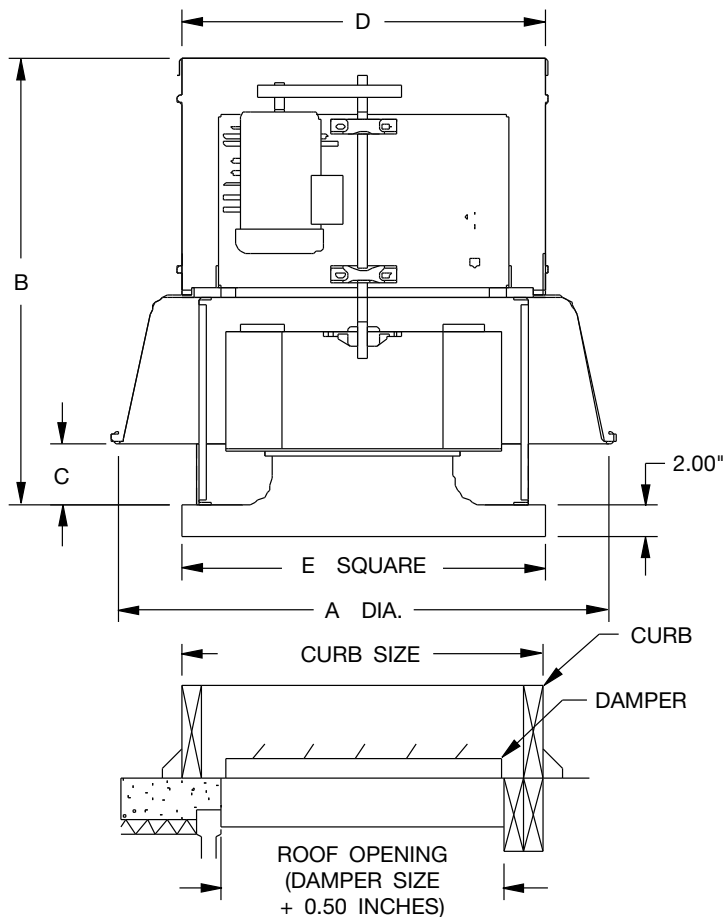
1. All dimensions are in inches unless otherwise noted.
2. Dimensions are not to be used for construction.
3. Outside dimensions of dampers are nominal.
4. Outside dimensions of roof curb should be 1" to 1.50" less than inside curb cap dimension 'E', depending on thickness of flashing material used.
If curb hinges are used, specify 1.50" difference.
5. Self-flashing roof curbs are 1" larger than canted curbs.

EC MOTOR SIZES	PSC MOTOR SIZES	FAN DIMENSIONS					CANTED CURB SIZE	DAMPER SIZE	AVG. SHIP WT. (LBS.)
		A	B	C	D	E			
060BE/070BE	060B/070B	18.50	15.63	2.06	15.12	17.00	15.5 x 15.5	10 x 10	30
080BE	080B	18.50	15.63	2.06	15.12	17.00	15.5 x 15.5	10 x 10	32
085BE/090BE/095BE	085B/090B/095B	21.00	19.31	2.63	15.12	17.00	15.5 x 15.5	10 x 10	43
100BE	100B	21.00	17.31	2.63	15.12	17.00	15.5 x 15.5	10 x 10	48
120BE	120B	27.50	22.38	3.63	22.00	20.00	18.5 x 18.5	14 x 14	50
130BE	130B	27.50	23.25	4.44	22.00	24.00	22.5 x 22.5	18 x 18	65
140BE	140B	27.50	23.50	4.69	22.00	24.00	22.5 x 22.5	18 x 18	67
150BE	150B	30.44	26.75	4.63	24.00	24.00	22.5 x 22.5	18 x 18	77
160BE	160B	30.44	27.25	5.19	24.00	24.00	22.5 x 22.5	18 x 18	82
170BE	170B	38.38	29.25	4.06	30.00	30.00	28.5 x 28.5	24 x 24	95
180BE	180B	38.38	30.25	5.06	30.00	30.00	28.5 x 28.5	24 x 24	100

R-33717C

DIMENSIONS NOT TO BE USED FOR CONSTRUCTION. CERTIFIED DRAWINGS AVAILABLE UPON REQUEST.

ACX



Notes:

1. All dimensions are in inches unless otherwise noted.
2. Dimensions are not to be used for construction.
3. Outside dimensions of dampers are nominal.
4. Outside dimensions of roof curb should be 1" to 1.50" less than inside curb cap dimension 'E', depending on thickness of flashing material used. If curb hinges are used, specify 1.50" difference.
5. Self-flashing roof curbs are 1" larger than canted curbs.

SIZE	FAN DIMENSIONS					CANTED CURB SIZE	DAMPER SIZE	AVG. SHIP WT. (LBS.)
	A	B	C	D	E			
070D/075D	25.88	22.13	2.06	22.00	17.00	15.5 x 15.5	10 x 10	58
085D	27.50	23.94	2.38	22.00	17.00	15.5 x 15.5	10 x 10	67
100D/100DHP	27.50	23.94	2.38	22.00	20.00	18.5 x 18.5	14 x 14	74
120D	30.44	28.13	2.56	24.00	20.00	18.5 x 18.5	14 x 14	78
140D	30.44	28.25	2.81	24.00	24.00	22.5 x 22.5	18 x 18	93
140DHP	30.44	28.25	2.81	24.00	24.00	22.5 x 22.5	18 x 18	88
160D/160DHP	32.63	29.00	3.38	24.00	26.00	24.5 x 24.5	20 x 20	107
180D/180DHP	38.38	33.88	3.75	30.00	30.00	28.5 x 28.5	24 x 24	130
210D/210DHP	38.38	34.06	4.00	30.00	30.00	28.5 x 28.5	24 x 24	160
240D/240DHP	43.13	35.88	4.88	30.00	34.00	32.5 x 32.5	28 x 28	220
300D/300DHP	51.38	38.88	4.88	42.00	40.00	38.5 x 38.5	34 x 34	270
360D/360DHP	60.75	44.38	6.88	50.00	46.00	44.5 x 44.5	40 x 40	360
420D	65.81	47.81	7.00	50.00	52.00	50.5 x 50.5	46 x 46	420
480D	74.06	50.25	7.75	58.00	58.00	56.5 x 56.5	50 x 50	475

R-33718D

DIMENSIONS NOT TO BE USED FOR CONSTRUCTION. CERTIFIED DRAWINGS AVAILABLE UPON REQUEST.



Model

ACXD

Roof exhaust fans shall be of the direct drive centrifugal type, Model ACXD, as manufactured by Aerovent, Minneapolis, Minnesota.

PERFORMANCE — Fans shall be tested in accordance with AMCA 210 and AMCA 300 test codes for air moving devices and shall be guaranteed by the manufacturer to deliver rated published performance levels. Fans shall be licensed to bear the AMCA certified ratings seal for both sound and air. Models shall be cULus 705 listed.

CONSTRUCTION — Model ACXD fan housings shall be constructed of aluminum for durability and appearance. Fan spinings shall have a rolled bead edge for rigidity. Units shall have a deep venturi inlet to prevent snow and rain entry into the building. The curb cap shall include prepunched mounting holes for ease of installation. A conduit chase constructed of electrical metallic tubing shall be provided to the motor compartment. The curb base shall provide protection from weather. Fans shall bear a permanently attached nameplate displaying model and serial number of the unit for future identification.

MOTOR ASSEMBLY — Motor assembly shall be mounted on vibration isolators to eliminate vibration and noise transmission into the ductwork. Motors shall be mounted out of the exhaust airstream.

WHEEL — Fan wheels shall be of the centrifugal backward inclined type, containing a matching inlet venturi for optimum unit performance. Wheels shall be statically and dynamically balanced.

MOTOR — Motors shall be heavy-duty ball bearing type, closely matched to the fan load. All single-phase ODP motors shall contain thermal overload protection. All motors shall be UL and /or CSA recognized. Motors for use with speed control shall provide good speed controllability without any objectionable noise.

DISCONNECT SWITCH — A NEMA 1 disconnect switch shall be supplied with wiring leading from the motor to the junction box (ODP and TEFC motors).

ACCESSORIES — When specified, accessories such as backdraft damper, roof curb, curb hinge, retaining chain, security hasp, variable speed controller, NEMA 3R or NEMA 4 disconnect switches, firestat, aluminum bird screen, aluminum insect screen and special coatings shall be provided by Aerovent to maintain one source responsibility.

FACTORY RUN TEST — All fans prior to shipment shall be completely assembled and test run as a unit at operating speed or maximum RPM allowed for the particular construction type. Each wheel shall be statically and dynamically balanced in accordance with ANSI/AMCA 204-96 "Balance Quality and Vibration Levels for Fans" to Fan Application Category BV-3, Balance Quality Grade G6.3. Balance readings shall be taken by electronic type equipment in the axial, vertical, and horizontal directions on each of the bearings. Records shall be maintained and a written copy shall be available upon request.

GUARANTEE — The manufacturer shall guarantee the workmanship and materials for its roof and wall mounted centrifugal exhaust fans for at least one (1) year from startup or eighteen (18) months from shipment, whichever occurs first.





Model

ACX

Roof mounted exhaust fans shall be of the belt driven centrifugal type, Model ACX (Spun Aluminum Housing) and as manufactured by Aerovent, Minneapolis, Minnesota.

PERFORMANCE — Fans shall be tested in accordance with AMCA 210 and AMCA 300 test codes for air moving devices and shall be guaranteed by the manufacturer to deliver rated published performance levels. Fans shall be licensed to bear the AMCA certified ratings seal for both sound and air. Models shall be cULus 705 listed.

CONSTRUCTION — Model ACX fan housings shall be constructed of spun aluminum and shall offer finish durability and aesthetic appearance. Fan spinings shall have a rolled bead edge for rigidity. All units have a deep venturi inlet to prevent snow and rain entry into the building. The curb cap shall include prepunched mounting holes for ease of installation. A conduit chase constructed of electrical metallic tubing shall be provided to the motor compartment. The curb base shall provide protection from weather. Lifting lugs shall be provided inside the motor compartment for ease of handling and installation. Fans shall bear a permanently attached nameplate displaying model and serial number of the unit for future identification.

MOTOR AND DRIVE ASSEMBLY — Motor and drive assembly shall be mounted on vibration isolators to eliminate vibration and noise transmission into the ductwork. Motors and drives shall be mounted out of the exhaust airstream.

WHEEL — Fan wheels shall be of the centrifugal backward inclined type, containing a matching inlet venturi for optimum unit performance. Wheels shall be statically and dynamically balanced.

SHAFT — Fan shafts shall be precision-ground and polished. Shafts shall have a first critical speed of at least 125% of the fan's maximum operating speed.

BEARINGS — Bearings shall be of the one-piece, pillow block type with relubricable zerk fittings. Bearings shall be designed for air handling service with a minimum L-10 life in excess of 100,000 hours; L-50 500,000 hours at the maximum cataloged operating speed. Bearing mounting plate shall have self-aligning tabs for exact locating and alignment of bearings.

DRIVE — Drive assembly shall be constructed of heavy-gauge galvanized steel. Drives shall be sized for a minimum of 150% of driven horsepower. Machined, cast iron motor sheaves shall be adjustable for final system balance.

MOTOR — Motors shall be heavy-duty ball bearing type, closely matched to the fan load. All single-phase ODP motors shall contain thermal overload protection. All motors shall be UL and /or CSA recognized. Motor adjustment shall allow precise belt tensioning for optimum belt life and one-person adjustment and servicing.

DISCONNECT SWITCH — A NEMA 1 disconnect switch shall be supplied with wiring leading from the motor to the junction box (ODP and TEFC motors).

ACCESSORIES — When specified, accessories such as backdraft damper, roof curb, curb hinge, retaining chain, security hasp, NEMA 3R or NEMA 4 disconnect switches, 2-speed switch, firestat, aluminum bird screen, aluminum insect screen and special coatings shall be provided by Aerovent to maintain one source responsibility.

FACTORY RUN TEST — All fans prior to shipment shall be completely assembled and test run as a unit at operating speed or maximum RPM allowed for the particular construction type. Each wheel shall be statically and dynamically balanced in accordance with ANSI/AMCA 204-96 "Balance Quality and Vibration Levels for Fans" to Fan Application Category BV-3, Balance Quality Grade G6.3. Balance readings shall be taken by electronic type equipment in the axial, vertical, and horizontal directions on each of the bearings. Records shall be maintained and a written copy shall be available upon request.

GUARANTEE — The manufacturer shall guarantee the workmanship and materials for its roof and wall mounted centrifugal exhaust fans for at least one (1) year from startup or eighteen (18) months from shipment, whichever occurs first.



**PROPELLER FANS | TUBEAXIAL & VANEAXIAL FANS | CENTRIFUGAL FANS & BLOWERS | ROOF VENTILATORS
AIR HEATERS & COOLERS | AIR MAKE-UP | FIBERGLASS FANS | CUSTOM FANS**



AEROVENT 
INDUSTRIAL VENTILATION SYSTEMS

AEROVENT.COM

5959 Trenton Lane N | Minneapolis, MN 55442 | Phone: 763-551-7500 | Fax: 763-551-7501