

# 6375DFL

## Drainable Stationary Louver | Extruded Aluminum

UL Listed for 50 PSF Windload | Florida Product Approval #11614

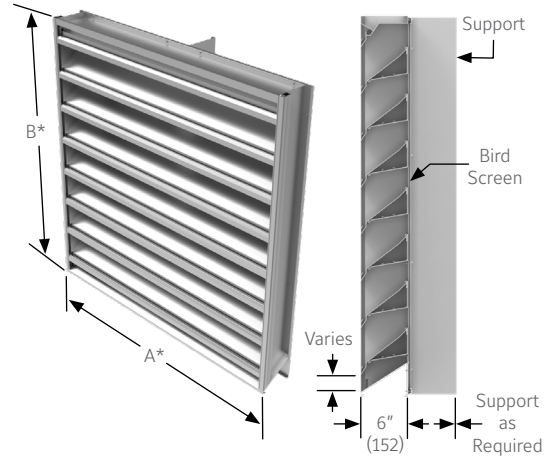


### APPLICATION

The 6375DFL is a stationary louver that is UL listed for windload resistance and Florida Product Approved for compliance to the Florida Building Code. It has a 6" deep frame and air performance and water penetration tested in accordance with AMCA Publication 511.

### STANDARD CONSTRUCTION

<b>Frame</b>	6" (152) deep, 6063T6 extruded aluminum. .081" (2.1) nominal wall thickness. Downspouts and caulking slots provided.
<b>Blades</b>	6063T6 extruded aluminum. .081" (2.1) nominal wall thickness. Drainable blades are positioned at 37 1/2° angle and spaced approximately 5 29/32" (150) center to center.
<b>Screen</b>	5/8" x .040" (16 x 1) expanded, flattened aluminum bird screen in removable frame. Screen adds approximately 1/2" (13) to louver depth.
<b>Finish</b>	Mill.
<b>Minimum Size</b>	12"w x 12"h (305 x 305).
<b>Approximate Shipping Weight</b>	5 lbs./ft. <sup>2</sup> (24.4 kg/m <sup>2</sup> ).
<b>Maximum Size</b>	Maximum single ship section size 90"w x 120"h (2286 x 3048) or 120"w x 90"h (3048 x 2286). Maximum field assembled size of ship sections is 180"w x 120"h (4572 x 3048) or 240"w x 90"h (6096 x 2286). A maximum of two sections may be joined side by side. Single section heights only: <b>sections cannot be stacked in height.</b> Openings taller than the maximum louver height will need to be divided into multiple openings with suitable structural members. Structural members are not designed or provided by Reliable.
<b>Installation</b>	Must be installed per approved installation method. Refer to the related installation instruction sheet for details.
<b>Supports</b>	Factory installed on louvers over 60" wide. Depth varies from 3" (76) to 6" (152) depending on louver size (consult Reliable for more information).



### VARIATIONS

Variations to the basic design of this louvers are available at additional cost. They include:

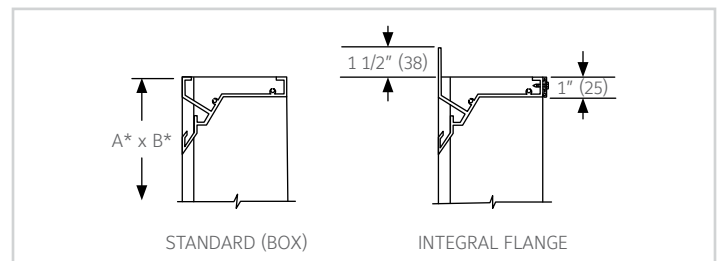
- Extended sill.
- Front or rear security bars.
- Filter racks.
- Blank off panels.
- Universe sleeve.
- A variety of bird and insect screens.
- Please provide rough opening dimensions for "A" and "B" dimensions unless ordered as actual size, the louver will be provided 1/2" (12) smaller than "A" and "B" dimensions provided.
- Optional finishes available at additional cost: Prime coat, 50% PVDF (modified fluoropolymer), Epoxy, Pearledize, 70% PVDF, Clear and Anodized finishes. (Some variation in anodize color consistency is possible).

Consult Reliable for other special requirements.

### FEATURES

- Meets 2004 Florida Building Code TAS202-94 requirements ±50 psf windload.
- 57% Free Area.
- Published performance ratings based on testing in accordance with AMCA Publication 511.
- Beginning point of water penetration at .01 oz/sq ft. is 932 fpm.
- Drain gutter in each blade minimizes water cascade between blades.
- Architecturally styled hidden mullions allowing continuous line appearance up to 120" (3048).
- All aluminum construction for low maintenance and high resistance to corrosion.
- All welded construction.
- AMCA540 Listed (Basic Protection).

### FRAME CONSTRUCTION



Note:

- Dimensions in inches, parenthesis ( ) indicate millimeters.
- Units furnished 1/4" (6) smaller than given opening dimensions.



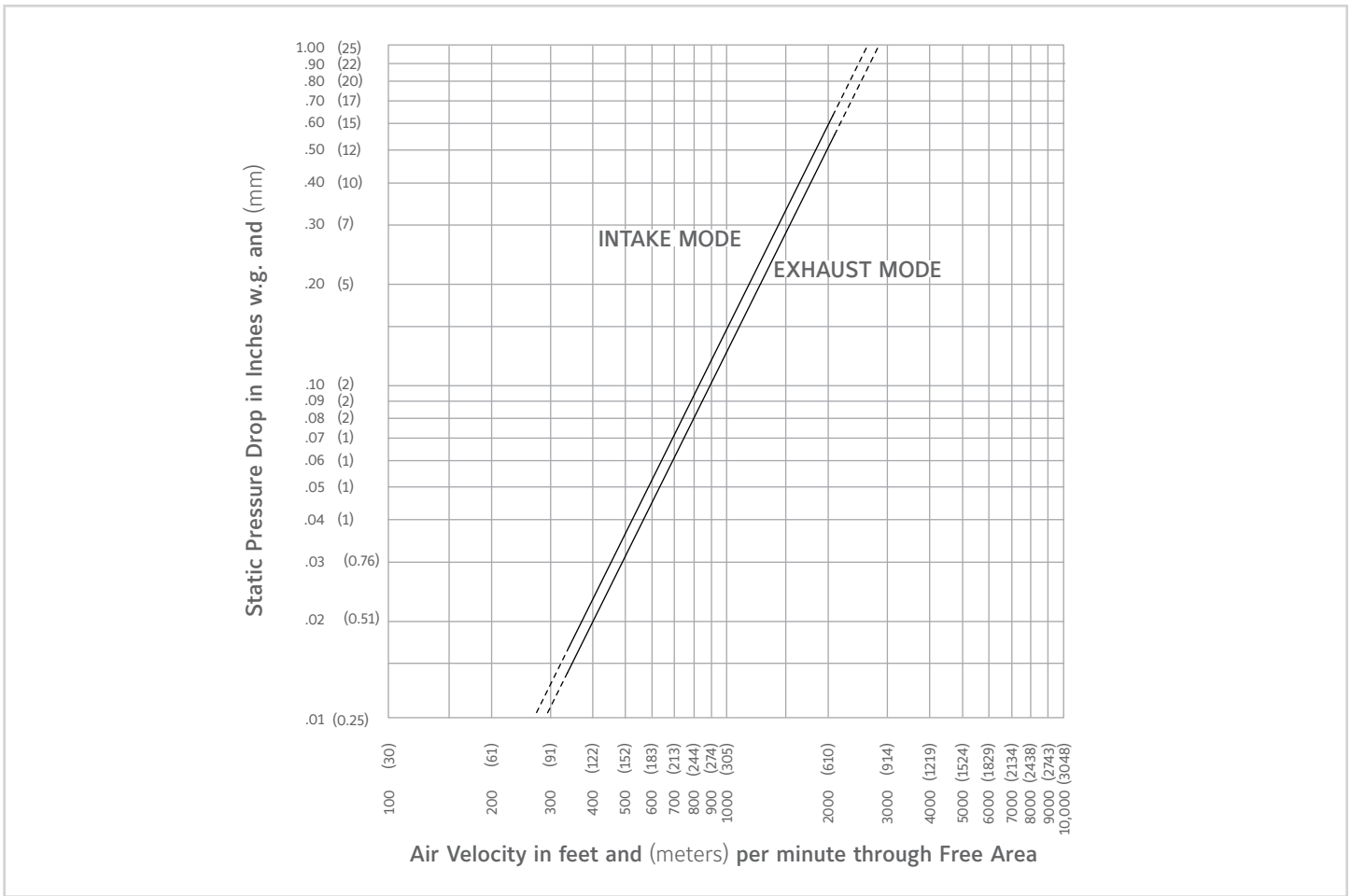
UL CLASSIFIED as a Wind Resistive Building Component in accordance with ASTM E330-02 for ±50 psf (2.39 kPa) windload. UL File No. R22052.

# FREE AREA GUIDE

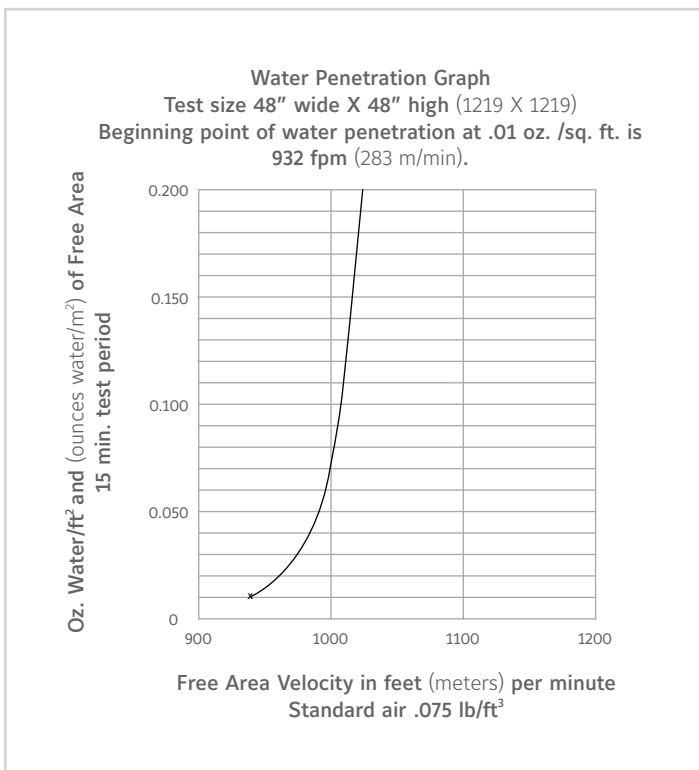
Free Area Guide shows free area in ft<sup>2</sup> and m<sup>2</sup> for various sizes of 6375DFL.

		Width – Inches and Meters																			
		12	18	24	30	36	42	48	54	60	66	72	78	84	90	96	102	108	114	120	
Height – Inches and Meters	12	0.30	0.45	0.60	0.75	0.90	1.05	1.20	1.35	1.50	1.65	1.80	1.95	2.10	2.25	2.40	2.55	2.70	2.85	3.00	
	12	0.30	0.36	0.57	0.79	1.00	1.22	1.43	1.65	1.86	2.08	2.29	2.51	2.72	2.94	3.15	3.37	3.58	3.80	4.01	4.23
	18	0.45	0.63	1.00	1.38	1.76	2.13	2.51	2.89	3.26	3.64	4.02	4.39	4.77	5.15	5.52	5.90	6.28	6.65	7.03	7.41
	24	0.60	0.90	1.44	1.97	2.51	3.05	3.59	4.13	4.66	5.20	5.74	6.28	6.82	7.36	7.89	8.43	8.97	9.51	10.05	10.58
	30	0.75	1.17	1.87	2.57	3.27	3.97	4.67	5.37	6.07	6.76	7.46	8.16	8.86	9.56	10.26	10.96	11.66	12.36	13.06	13.76
	36	0.90	1.44	2.30	3.16	4.02	4.88	5.74	6.60	7.47	8.33	9.19	10.05	10.91	11.77	12.63	13.50	14.36	15.22	16.08	16.94
	42	1.05	1.71	2.73	3.75	4.77	5.80	6.82	7.84	8.87	9.89	10.91	11.94	12.96	13.98	15.01	16.03	17.05	18.07	19.10	20.12
	48	1.20	1.97	3.16	4.34	5.53	6.71	7.90	9.08	10.27	11.45	12.64	13.82	15.01	16.19	17.38	18.56	19.75	20.93	22.11	23.30
	54	1.35	2.24	3.59	4.94	6.28	7.63	8.98	10.32	11.67	13.01	14.36	15.71	17.05	18.40	19.75	21.09	22.44	23.79	25.13	26.48
	60	1.50	2.51	4.02	5.53	7.04	8.55	10.05	11.56	13.07	14.58	16.09	17.59	19.10	20.61	22.12	23.63	25.13	26.64	28.15	29.66
	66	1.65	2.78	4.45	6.12	7.79	9.46	11.13	12.80	14.47	16.14	17.81	19.48	21.15	22.82	24.49	26.16	27.83	29.50	31.17	32.84
	72	1.80	3.05	4.88	6.71	8.55	10.38	12.21	14.04	15.87	17.70	19.53	21.36	23.20	25.03	26.86	28.69	30.52	32.35	34.18	36.02
	78	1.95	3.32	5.31	7.31	9.30	11.29	13.29	15.28	17.27	19.26	21.26	23.25	25.24	27.24	29.23	31.22	33.22	35.21	37.20	39.19
	84	2.10	3.59	5.75	7.90	10.05	12.21	14.36	16.52	18.67	20.83	22.98	25.14	27.29	29.45	31.60	33.75	35.91	38.06	40.22	42.37
	90	2.25	3.86	6.18	8.49	10.81	13.13	15.44	17.76	20.07	22.39	24.71	27.02	29.34	31.65	33.97	36.29	38.60	40.92	43.24	45.55
	96	2.40	4.13	6.61	9.09	11.56	14.04	16.52	19.00	21.47	23.95	26.43	28.91	31.39	33.86	36.34	38.82	41.30	43.78	46.25	48.73
102	2.55	4.40	7.04	9.68	12.32	14.96	17.60	20.24	22.88	25.51	28.15	30.79	33.43	36.07	38.71	41.35	43.99	46.63	49.27	51.91	
108	2.70	4.67	7.47	10.27	13.07	15.87	18.67	21.48	24.28	27.08	29.88	32.68	35.48	38.28	41.08	43.88	46.69	49.49	52.29	55.09	
114	2.85	4.94	7.90	10.86	13.83	16.79	19.75	22.71	25.68	28.64	31.60	34.57	37.53	40.49	43.45	46.42	49.38	52.34	55.30	58.27	
120	3.00	5.21	8.33	11.46	14.58	17.70	20.83	23.95	27.08	30.20	33.33	36.45	39.58	42.70	45.82	48.95	52.07	55.20	58.32	61.45	

## PRESSURE DROP



## PERFORMANCE DATA



Ratings do not include the effect of a bird screen.

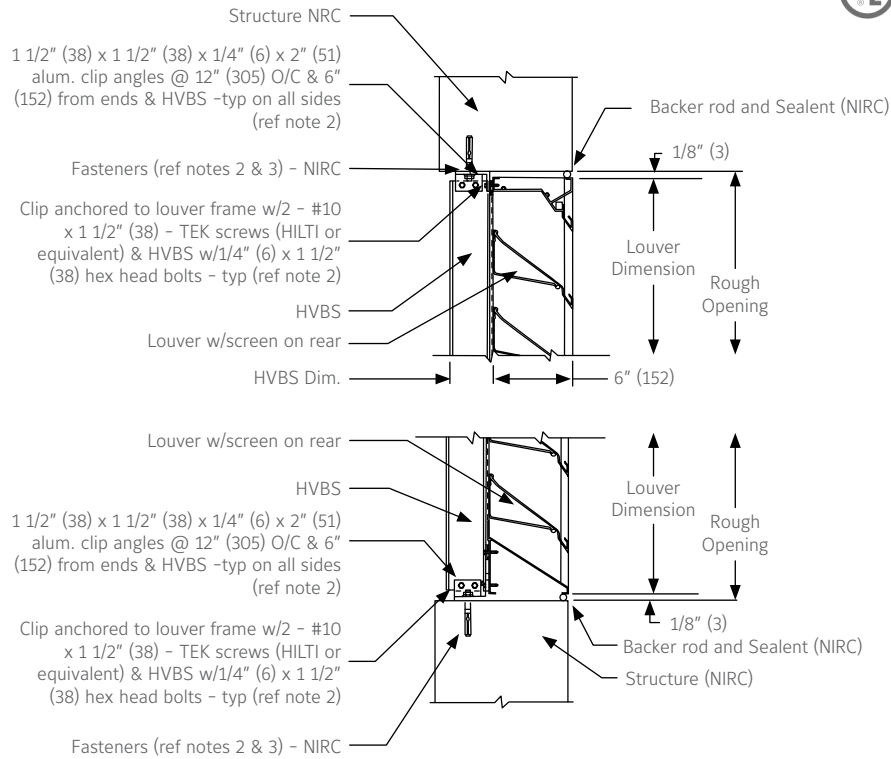


Reliable products certifies that the 6375DFL Louvers shown herein are licensed to bear the AMCA Seal. The ratings shown are based on tests and procedures performed in accordance with AMCA Publication 511 and comply with the requirements of the AMCA Certified Ratings Program. The AMCA Certified Ratings Seal applies to air performance ratings and water penetration ratings only.

## INSTALLATION DETAILS



SEE COMPLETE MARKING  
ON PRODUCT.

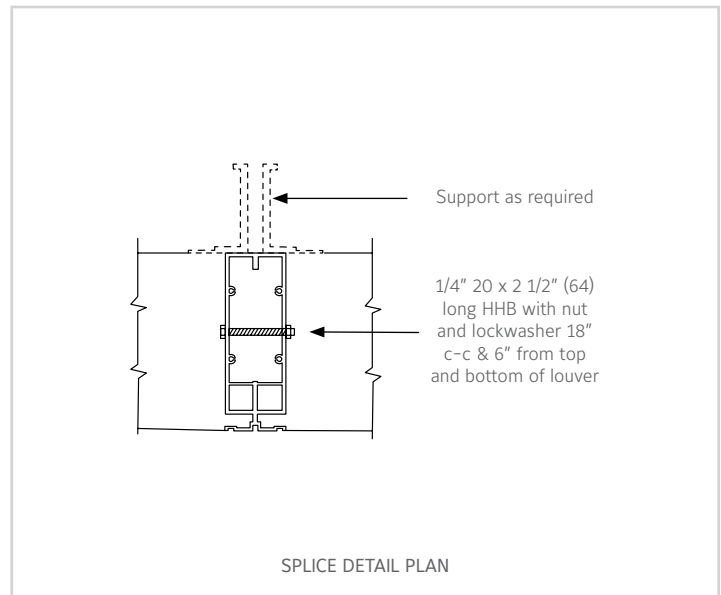
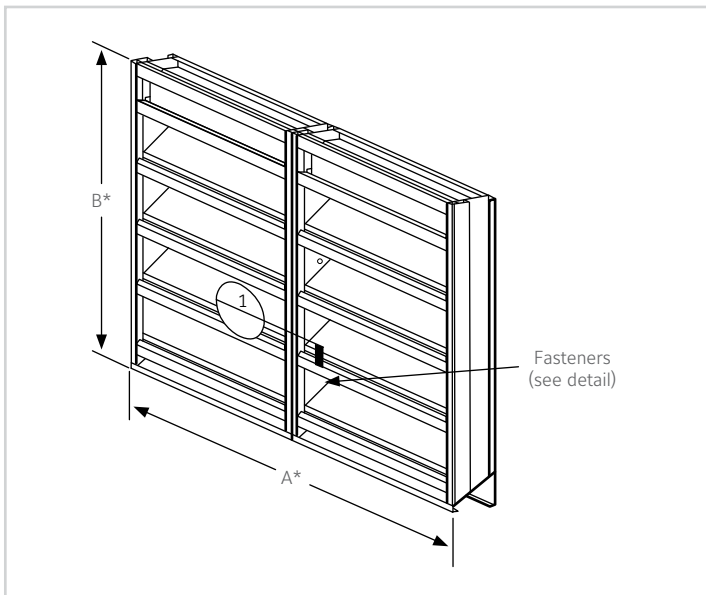


### 6375DLS LOUVER INSTALLATION DETAIL

#### Jamb Similar

- Notes:
1. The Installation shown herein must be followed strictly to ensure compliance with UL and florida listings.
  2. Aluminum clip angles & #10 TEK screws are available from Reliable at additional cost. Anchors for connection to structure are not provided by Reliable.
  3. One anchor into the substrate is required at every clip angle (both frame and HVBS clips). Anchor must be at least 5/16" in diameter. Anchors are not provided by Reliable.
  4. Reliable is not responsible for determining the suitability of the structure.
  5. Shims may be required to achieve consistent clearance between louver and opening on all sides. Shims not provided by Reliable.
  6. HVBS = Hidden Vertical Blade Support.
  7. NIRC = Not in Reliable's Contract.
  8. Dimensions shown in parenthesis ( ) indicate millimeters.

## 2x1 ASSEMBLY FILED SPLICE DETAIL



## SUGGESTED SPECIFICATION

Furnish and install louvers as hereinafter specified where shown on plans or as described in schedules. Louvers shall be UL Classified for wind resistant building components in accordance with ASTM E330-02 for  $\pm 50$  psf windload. Louvers shall be stationary drainable type with drain gutters in each blade and downspouts in jambs and mullions. Louvers shall have a minimum of 57% free area based on a 48" wide x 48" high (1219 x 1219) size. Stationary drainable blades shall be contained within a 6" (152) frame. Louver components (heads, jambs, sills, blades, & mullions) shall be factory assembled by the louver manufacturer. Louver sizes too large for shipping shall be built up by the contractor from factory assembled louver sections to provide overall sizes required. Louver design shall limit span between visible mullion to 10 feet (3) and shall incorporate structural supports required to withstand a wind load of 50 lbs. per sq. ft. (.96kPa).

Louvers shall be Reliable model 6375DFL extruded 6063T6 aluminum alloy construction as follows:

Frame: 6" (152) deep, .081" (2.1) wall thickness.

Blades: .081" (2.1) wall thickness. Drainable blades positioned at 37 1/2° angle and spaced approximately 5 29/32" (150) center to center.

Screen: 5/8" x .040" (16 x 1) expanded, flattened aluminum bird screen in removable frame.

Finish: Select finish specification from Reliable Finishes Brochure.

Published louver performance data bearing: a) AMCA Certified Ratings Seal for Air Performance & Water Penetration and b) UL classification information and file number must be submitted for approval prior to fabrication and must demonstrate pressure drop and water penetration equal to or less than the Reliable model specified.

## LINKS TO IMPORTANT DOCUMENTS

### Document Title

Finishes and Color Guide

Limited Warranty Document

**RELIABLE**

1300 Enterprise Road, P.O. Box  
580, Geneva, Alabama 36340  
Tel: 334-684-3621  
Tel: 800-624-3914  
Fax: 800-508-1469