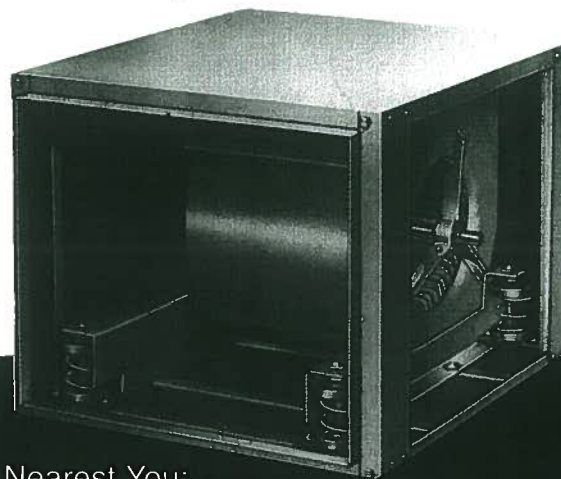
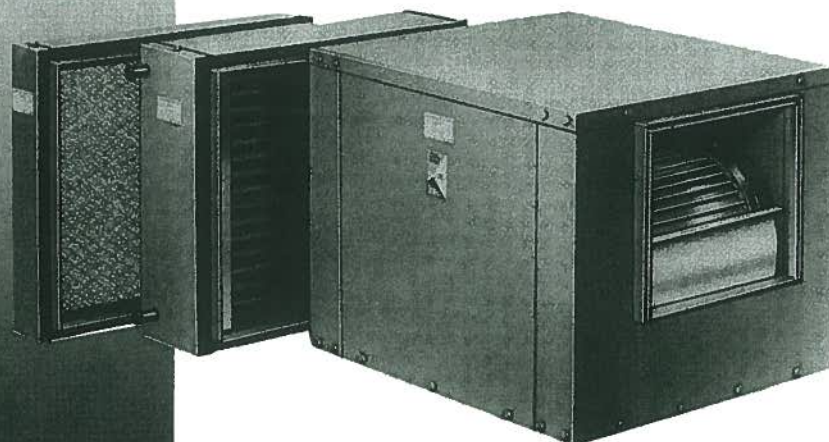
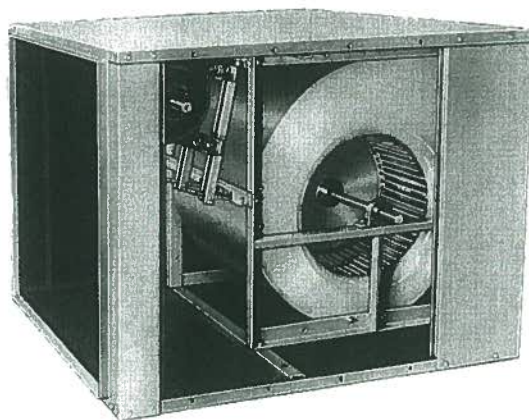


Quietaire

C O R P O R A T I O N

*Forward Curved
Inline Duct
Blowers*



For Distributor Nearest You:

Phone: (713) 228-9421

Fax: (713) 228-9425

505 North Hutcheson

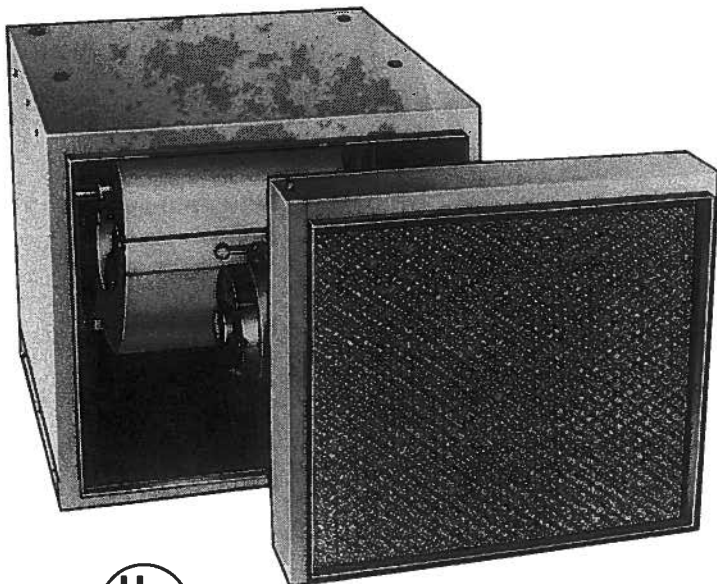
Houston, Texas 77003

Web: www.quietaire.com

E-mail: info@quietaire.com

July 2000

200 SERIES SINGLE & TWIN INLINE DUCT BLOWERS



FEATURES

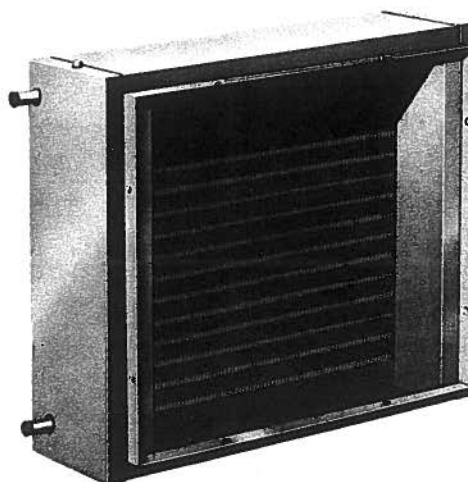
- An economical and efficient all purpose inline duct blower for indoor use with heating, cooling and ventilating systems.
- Quiet forward curved blowers operate at low RPM.
- Attractive green baked enamel paint finish.
- Motor receives the cooling benefits of being in the air stream for increased motor life.
- 9/16" mounting holes are provided in the top of the cabinet and through channels reinforcing the top panel.
- Heavy duty ball bearings suitable for -65 to +250 deg. F.
- Access panels for convenient motor and drive installation and servicing from either side.
- Shaft flats are standard on both ends for CW or CCW rotation.

OPTIONAL ACCESSORIES

- F200A filter sections are insulated and supplied with 1" framed aluminum mesh filter. All filter tracks will accommodate either 1" or 2" filters. Easily removed for servicing through end access panel.
- 1/2" internal fiberglass insulation to overcome condensation on cabinet when used in cooling applications.
- External vibration isolators.
- HC Hot Water Coil

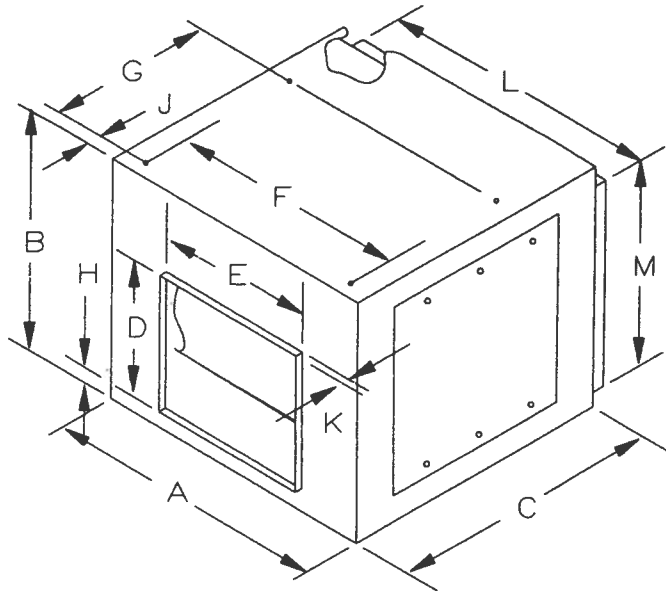
FEATURES (cont'd)

- Hook bolt motor adjustment allows models 207 to 212, single and twin units, to be used in up-flow, down-flow and horizontal discharge positions.
- Heavy duty motor mounting bracket with motor adjusting bolt and rubber bumper is supplied on models 215, 218, & 215-2 and is suitable for horizontal discharge only.
- All twin units use a common shaft for balanced air supply by each blower.



**OPTIONAL HOT WATER COIL
ATTACHES TO BLOWER INLET**

200 & 200-2 SERIES DIMENSIONS

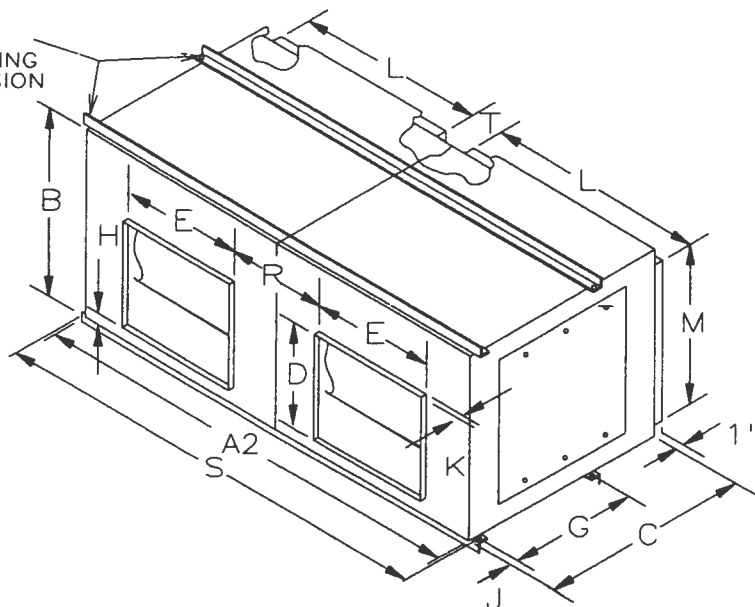


DIMENSIONS (inches)

NOTE: WT. SHOWN IS LESS MOTOR AND DRIVE

MODEL	A	B	C	D	E	F	G	H	J	K	L	M			WT. (LBS.)
207	18	15-3/8	23	8-1/4	9-3/16	14-1/2	9-5/8	1-1/4	1-1/4	7/8	15-7/8	13-3/8			46
209	21	18	23	10-1/4	11-13/16	17-1/2	11-3/4	1-1/4	1-3/4	7/8	19	16			58
210	22-1/4	20	24-3/4	11-3/8	13-1/8	18-3/4	13-3/8	1-1/4	1-3/4	7/8	20-1/4	18			69
212	27	23	27-1/2	13-7/16	15-5/8	23-1/2	16-1/8	1-1/4	1-3/4	7/8	25	21			89
215	33-1/2	28	32	15-7/8	18-5/8	28	19-1/2	2-5/8	1-3/4	7/8	30-1/2	25			175
218	41-1/2	34	44	19-5/8	22-5/8	35	24	2-3/4	1-3/4	1-1/8	35-3/8	31-5/8			205

STRUCTURAL STEEL ANGLE
TWINNING RAIL, TOP AND
BOTTOM WITH 5/8" MOUNTING
HOLES ON "G & S" DIMENSION
CENTRES.

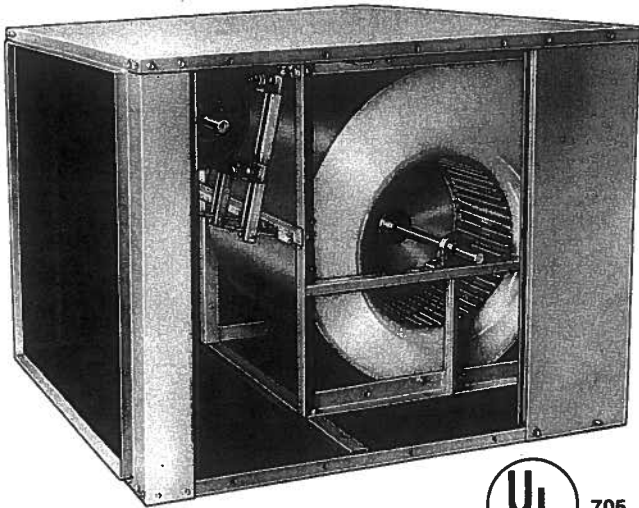


DIMENSIONS (inches)

NOTE: WT. SHOWN IS LESS MOTOR AND DRIVE

MODEL	A2	B	C	D	E	G	H	J	K	L	M	R	S	T	WT. (LBS.)
207-2	36	15-3/8	23	8-1/4	9-3/16	9-5/8	1-1/4	1-1/4	7/8	15-7/8	13-3/8	8-13/16	38-1/4	2	145
209-2	42	18	23	10-1/4	11-13/16	11-3/4	1-1/4	1-3/4	7/8	19	16	9-3/16	44-1/4	2	163
210-2	44-1/2	20	24-3/4	11-3/8	13-1/8	13-3/8	1-1/4	1-3/4	7/8	20-1/4	18	9-1/8	46-3/4	2	190
212-2	54	23	27-1/2	13-7/16	15-5/8	16-1/8	1-1/4	1-3/4	7/8	25	21	11-3/8	56-1/4	2	240
215-2	67	28	32	15-7/8	18-5/8	19-1/2	2-5/8	1-3/4	7/8	30-1/2	25	14-7/8	69-1/4	3	345

9200 SERIES SINGLE & TWIN INLINE DUCT BLOWERS

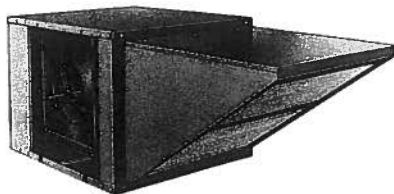


OPTIONAL ACCESSORIES

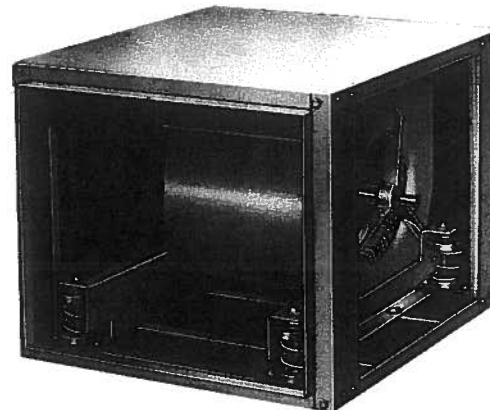
- F200A and F9220A filter sections are insulated and supplied with 1" framed aluminum mesh filters. All filter tracks will accommodate either 1" or 2" filters. Easily removed for servicing through end access panel.
- HC Hot Water Coil Section (see page 2).
- H9209 to H9218 filtered intake hood sections supplied with 1" aluminum mesh filters. H9220 hood section has a screened inlet for use with F9220A filter section. (Note: Twin units require 2 filter sections or two hood sections).
- External vibration isolators.
- Internal factory installed vibration isolation (see illustration below). Add "VIB" suffix.

FEATURES

- All purpose heavy duty blower with weather resistant insulated cabinet for indoor and outdoor installation.
- Quiet FC blowers operate at low RPM.
- Attractive green corrosion resistant high solids enamel paint finish on zinc coated outer panels.
- 1/2" fiberglass insulation to reduce cabinet condensation and energy costs.
- Access panels for convenient motor and drive installation and servicing from either side.
- Motor mounting hardware as required:
 - motor mounting brackets and adjusting hardware for models 9209 and 9210.
 - 1-5 HP base mount motor plate for 9212, 9215, 9212-VIB and 9215-VIB.
 - 1-15 HP motor platform for 9218.
 - specify 1-15 HP or 20-50 HP motor platform for model 9220.
- Heavy duty ball bearings suitable for -65 to +250 deg. F.
- Spider bearing bracket for models 9209 to 9215.
- Pillow block bearings for models 9218 and 9220.



9200 SERIES WITH INTAKE HOOD

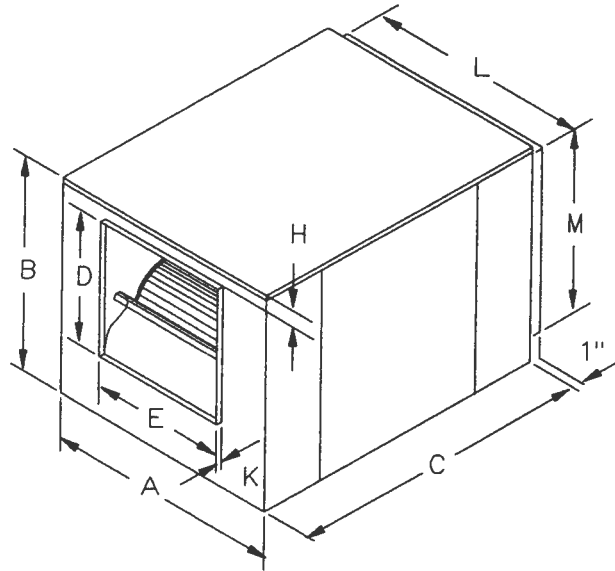


9200-VIB WITH INTERNAL VIBRATION ISOLATION

FEATURES (cont'd)

- Models 9209 and 9210 have shaft flat extensions, both ends, for CW or CCW drive.
- Models 9212 to 9220 have keywayed shaft extension, both ends, for single and multiple grooved drive.
- Blower is firmly mounted on 2 heavy steel reinforcing channels which also contain the holes necessary for hanging when unit is suspended overhead.
- Reinforcing angle frame (as illustrated) is standard on all models except 9209 and 9210.
- Twin models are tied together with angle iron runners. Blowers are driven by a common shaft for a balanced air supply by each blower.

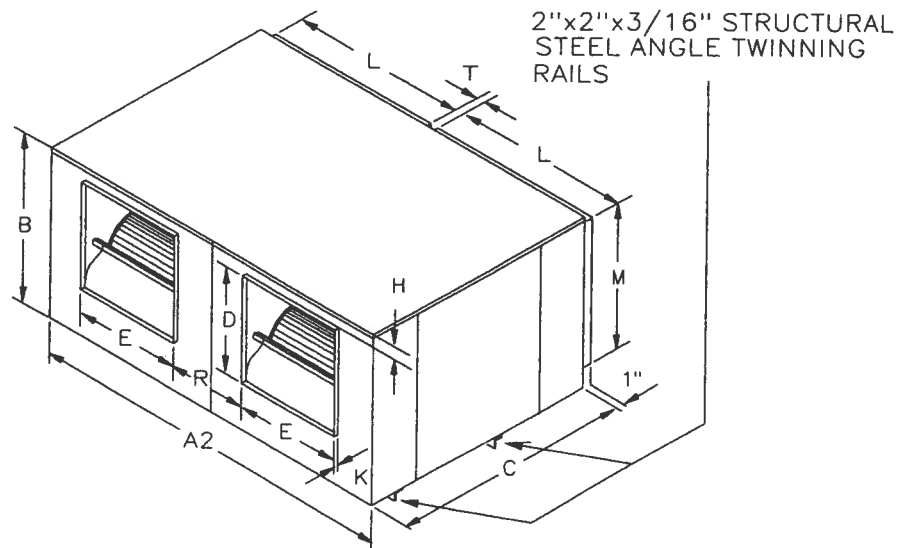
9200 & 9200-2 SERIES DIMENSIONS



DIMENSIONS (inches)

NOTE: WT. SHOWN IS LESS MOTOR AND DRIVE

MODEL	A	B	C	D	E	H	K	L	M			WT. (LBS.)
9209	21	18	23	11-1/4	12-3/4	1	1-1/8	19	16			64
9210	22-1/4	20	24-3/4	12-3/8	14-1/8	1	1-1/8	20-1/4	18			74
9212	30-1/8	24-3/4	34	14-1/2	16-5/8	2-1/8	1-1/8	25-1/8	21-1/8			175
9215	33-3/4	28-5/8	38-1/8	17	19-5/8	2-1/8	1-1/8	30-5/8	25-1/4			214
9218	41-1/2	34	44	19-5/8	22-5/8	2-3/4	1-1/8	35-3/8	31-5/8			370
9220	44-3/4	41-1/8	57-1/2	25-3/4	25-3/4	3	1-1/8	38-3/8	35-1/8			575

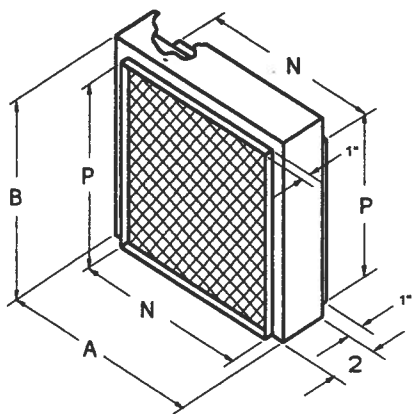


DIMENSIONS (inches)

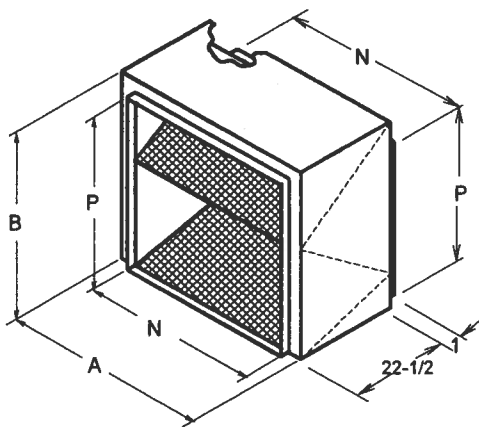
NOTE: WT. SHOWN IS LESS MOTOR AND DRIVE

MODEL	A2	B	C	D	E	H	K	L	M	R	T	WT. (LBS.)
9209-2	42	18	23	11-1/4	12-3/4	1	1-1/8	19	16	9-1/4	2	171
9210-2	44-1/2	20	24-3/4	12-3/8	14-1/8	1	1-1/8	20-1/4	18	9-1/8	2	198
9212-2	60-1/8	24-3/4	34	14-1/2	16-5/8	2-1/8	1-1/8	25-1/8	21-1/8	13-1/4	4-3/4	390
9215-2	67-5/8	28-5/8	38-1/8	17	19-5/8	2-1/8	1-1/8	30-5/8	25-1/4	14-1/8	2-7/8	467
9218-2	83-3/8	34	44	19-5/8	22-5/8	2-3/4	1-1/8	35-3/8	31-5/8	19	6-1/4	750
9220-2	89-1/2	41-1/8	57-1/2	25-3/4	25-3/4	3	1-1/8	38-3/8	35-1/8	19	6-1/8	1200

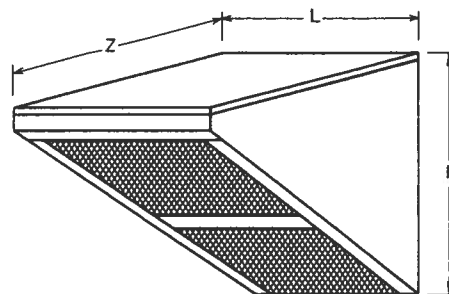
F200A SERIES & F9220A FILTER SECTIONS, H9200 SERIES INTAKE HOODS



**SERIES F200A
FILTER SECTION**



**F9220A
FILTER SECTION**



**SERIES H9200
INTAKE HOOD**

DIMENSIONS (inches)

MODEL	A	B	N	P	FILTER SIZE - (QTY.)	WT. (LBS.)	MODEL	L	M	Z	FILTER SIZE - (QTY.)	WT. (LBS.)
F207A	17-3/4	15-3/8	16	13-1/2	14-1/8 x 16-5/8 (1)	6	N/A	--	--	--	--	--
F209A	21	18	19-1/8	16-1/8	16-3/4 x 19-7/8 (1)	7	H9209	19-1/4	16-9/16	21-1/4	16 x 24 (1)	18
F210A	22-1/4	20	20-3/8	18-1/8	18-3/4 x 21-1/8 (1)	8	H9210	20-1/2	18-9/16	25-3/4	15 x 20 (2)	20
F212A	27	23	25-1/8	21-1/8	21-3/4 x 25-7/8 (1)	10	H9212	25-3/8	21-9/16	30-3/4	20 x 25 & 16 x 25 (2)	32
F215A	32-1/2	26-3/4	30-5/8	25-1/8	25-3/4 x 31 (1)	12	H9215	31-3/16	25-13/16	33-1/2	20 x 28-1/2 (2)	44
F218A	37	33-1/4	35-1/4	31-1/2	32-1/4 x 35-7/8 (1)	14	H9218	35-5/8	32-11/16	40-1/4	20 x 25 (2) & 16 x 25 (2)	56
F9220A	39-3/4	37-1/4	38-1/2	35-1/4	20 x 25 (6)	70	H9220	38-5/8	35-9/16	22	SEE F9220A	44

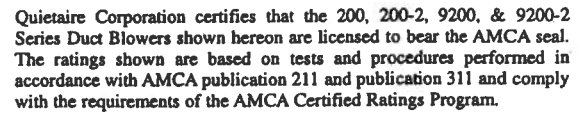
ALL FILTER SECTIONS HAVE 1" ALUMINUM FILTERS.

INTAKE HOODS (EXCEPT H9220) HAVE 1" ALUMINUM FILTERS.
H9220 HAS SCREENED INLET FOR USE WITH F9220A FILTER SECTION.

NOTE: TWIN DUCT BLOWERS REQUIRE TWO FILTER SECTIONS AND/OR TWO HOOD SECTIONS

PRESSURE DROP in. wg WITH 1" ALUMINUM FILTERS

FILTER SECTION								HOOD SECTION				
CFM	F207A	F209A	F210A	F212A	F215A	F218A	F9220A	H9209	H9210	H9212	H9215	H9218
300	.010	.007						.013				
400	.018	.010						.018				
600	.030	.020	.013					.030	.018			
800	.067	.026	.022	.012				.043	.025	.015		
1000	.117	.042	.028	.020				.065	.034	.019		
1200	.171	.073	.041	.023	.012			.093	.043	.023	.017	
1300		.091	.053	.025	.015			.107	.049	.027	.019	
1400		.109	.067	.029	.018			.122	.055	.030	.020	
1600		.145	.095	.038	.021	.011			.072	.035	.025	.015
1800		.182	.124	.054	.024	.013			.091	.042	.030	.017
2000			.154	.073	.026	.017			.109	.048	.034	.019
2500				.126	.042	.023				.073	.045	.025
3000				.182	.073	.028				.103	.061	.032
3500					.110	.040				.131	.082	.040
4000					.147	.057	.023				.107	.048
4500					.182	.082	.027				.130	.059
5000						.107	.032					.072
5500						.132	.036					.088
6000						.157	.040					.103
6500						.182	.046					.117
7000							.052					.131
7500							.058					
8000							.065					
8500							.074					
9000							.082					
10000							.101					
11000							.118					
12000							.137					
MAXIMUM CFM												
	1250	1800	2200	3500	4500	6700	12000	1450	2200	3500	4500	7000



- 7 -



Quietaire Corporation certifies that the 200, 200-2, 9200, & 9200-2 Series Duct Blowers shown hereon are licensed to bear the AMCA seal. The ratings shown are based on tests and procedures performed in accordance with AMCA publication 211 and publication 311 and comply with the requirements of the AMCA Certified Ratings Program.

200 & 9200 SERIES PERFORMANCE DATA

Model 215 & 9215				215 - 3 HP MAXIMUM				9215 - 5 HP MAXIMUM				TIP SPEED = 3.99 x RPM				STANDARD DRIVE RANGE									
				1" SHAFT				1" SHAFT				WHEEL DIA. = 15.25"				401- 548 RPM									
CFM	OUTLET VELOCITY FPM	1/8" BHP	SP SONES	1/4" BHP	SP SONES	1/2" BHP	SP SONES	3/4" BHP	SP SONES	1" BHP	SP SONES	1-1/2" BHP	SP SONES	2" BHP	SP SONES	2-1/2" BHP	SP SONES								
1800	876	273	0.10	2.7	370	0.18	4.8	510	0.29	8.8	617	0.42	11.3	705	0.57	14.1	850	0.88	18.3	969	1.20	21	1071	1.52	24
1900	925	278	0.11	3.4	373	0.19	5.0	510	0.32	9.0	620	0.44	11.5	708	0.60	14.3	854	0.93	18.6	974	1.26	22	1077	1.59	25
2000	974	284	0.12	4.2	375	0.20	4.5	510	0.35	9.0	622	0.47	11.7	711	0.62	14.6	857	0.97	19.0	978	1.32	22	1083	1.67	25
2100	1022	290	0.14	2.9	375	0.21	4.8	510	0.38	9.0	623	0.50	11.8	714	0.65	14.9	860	1.01	19.3	982	1.37	22	1088	1.74	26
2200	1071	297	0.15	3.6	376	0.22	4.8	511	0.41	9.2	624	0.54	11.9	716	0.68	15.1	863	1.05	19.7	986	1.43	23	1092	1.81	27
2300	1120	305	0.17	4.2	378	0.23	4.7	514	0.44	10.0	624	0.58	11.9	718	0.72	15.3	866	1.09	20	989	1.48	23	1096	1.89	27
2400	1168	314	0.19	4.8	381	0.25	4.8	517	0.46	10.8	624	0.62	12.0	720	0.76	15.5	869	1.13	20	992	1.54	24	1100	1.96	27
2500	1217	323	0.21	5.5	385	0.27	5.1	521	0.49	12.0	624	0.67	12.0	721	0.81	15.5	872	1.17	21	995	1.59	24	1104	2.02	28
2600	1266	332	0.23	4.6	389	0.29	5.3	525	0.51	13.3	625	0.71	12.1	721	0.86	15.5	875	1.21	21	999	1.64	25	1107	2.09	29
2700	1314	342	0.26	6.1	394	0.32	5.6	528	0.54	14.3	626	0.76	12.2	721	0.92	15.5	877	1.26	22	1002	1.69	25	1110	2.16	29
2800	1363	352	0.29	5.6	400	0.34	5.9	530	0.56	9.0	629	0.80	12.6	721	0.98	15.5	879	1.31	22	1005	1.75	25	1113	2.22	29
2900	1412	363	0.31	6.0	406	0.37	6.2	531	0.58	9.1	632	0.84	13.0	721	1.04	15.5	881	1.37	23	1007	1.81	26	1116	2.29	29
3000	1461	373	0.35	6.4	413	0.40	6.5	531	0.60	9.2	636	0.87	13.8	722	1.09	15.8	882	1.44	23	1010	1.87	26	1119	2.36	30
3100	1509	384	0.38	6.7	420	0.43	7.1	532	0.62	9.2	640	0.91	14.5	723	1.15	15.8	883	1.51	23	1012	1.93	27	1122	2.42	30
3200	1558	394	0.42	7.0	427	0.46	8.8	533	0.65	8.3	643	0.95	15.0	725	1.21	15.9	883	1.59	23	1015	2.00	27	1125	2.49	31
3300	1607	405	0.45	7.2	436	0.50	10.3	536	0.68	8.5	646	0.98	16.6	728	1.26	16.2	883	1.68	23	1016	2.07	27	1128	2.57	32
3400	1655	416	0.49	7.4	445	0.54	12.0	539	0.71	9.7	649	1.01	13.8	732	1.31	16.6	883	1.77	23	1018	2.16	28	1130	2.64	32
3500	1704	427	0.54	7.8	454	0.58	14.1	543	0.75	10.0	650	1.04	13.7	736	1.36	16.9	883	1.86	23	1019	2.25	28	1133	2.73	32
3600	1753	437	0.58	8.3	463	0.62	16.4	547	0.80	10.7	651	1.08	18.8	740	1.41	17.3	883	1.94	23	1019	2.35	28	1135	2.81	32
3700	1801	448	0.63	8.8	473	0.67	9.4	552	0.84	11.6	651	1.10	13.8	743	1.46	17.5	884	2.03	24	1020	2.46	28	1137	2.91	33
3800	1850	459	0.68	9.4	483	0.72	10.0	557	0.89	12.5	652	1.14	13.9	746	1.51	17.8	886	2.12	25	1020	2.57	28	1138	3.01	33
3900	1899	470	0.73	9.9	493	0.78	10.8	562	0.94	13.6	653	1.18	13.9	749	1.55	17.8	888	2.20	26	1020	2.69	28	1139	3.13	33
4000	1948	481	0.79	10.5	503	0.83	11.9	568	0.99	14.9	655	1.23	14.1	750	1.59	17.7	891	2.29	27	1020	2.81	28	1140	3.26	33
4100	1996	492	0.85	11.1	513	0.89	13.1	574	1.04	16.1	658	1.28	14.3	751	1.63	17.8	894	2.36	29	1020	2.93	28	1140	3.38	33
4200	2045	503	0.91	11.7	523	0.95	14.2	581	1.10	12.5	661	1.33	14.5	751	1.67	17.8	898	2.44	32	1020	3.05	28	1140	3.52	33
4300	2094	514	0.97	12.4	534	1.02	15.4	588	1.16	13.1	665	1.39	14.9	752	1.71	17.8	902	2.52	35	1022	3.16	29	1140	3.67	33
4400	2142	526	1.04	12.9	544	1.09	16.6	595	1.22	13.8	670	1.46	15.8	753	1.76	17.9	906	2.59	39	1023	3.28	29	1140	3.81	33

Model 215-2 & 9215-2										215-2 - 3 HP MAXIMUM 1" SHAFT										9215-2 - 5 HP MAXIMUM 1" SHAFT										TIP SPEED = 3.99 x RPM WHEEL DIA. = 15.25"																																																																																																																																																																																																																																																																																																																																																																																																																																																																																																																																																																																																																																												
CFM	OUTLET VELOCITY FPM	1/8" BHP	SP SONES	1/4" BHP	SP SONES	1/2" BHP	SP SONES	3/4" BHP	SP SONES	1" BHP	SP SONES	1-1/2" BHP	SP SONES	2" BHP	SP SONES	2-1/2" BHP	SP SONES	CFM	OUTLET VELOCITY FPM	1/8" BHP	SP SONES	1/4" BHP	SP SONES	1/2" BHP	SP SONES	3/4" BHP	SP SONES	1" BHP	SP SONES	1-1/2" BHP	SP SONES	2" BHP	SP SONES	2-1/2" BHP	SP SONES																																																																																																																																																																																																																																																																																																																																																																																																																																																																																																																																																																																																																																							
3600	876	273	0.20	3.5	370	0.35	5.8	510	0.59	10.2	617	0.84	13.2	705	1.14	16.2	850	1.77	20	969	2.40	24	1071	3.04	27	3800	925	278	0.22	4.2	373	0.38	6.0	510	0.64	10.5	620	0.89	13.6	708	1.19	16.5	854	1.85	21	974	2.52	24	1077	3.19	28	4000	974	284	0.25	5.0	375	0.40	5.8	510	0.70	10.5	622	0.94	13.8	711	1.25	16.8	857	1.93	21	978	2.63	25	1083	3.34	28	4200	1022	290	0.28	3.8	375	0.42	5.7	510	0.76	10.5	623	1.00	13.9	714	1.31	17.1	860	2.01	22	982	2.75	25	1088	3.49	29	4400	1071	297	0.31	4.5	376	0.44	5.7	511	0.82	10.8	624	1.07	14.0	716	1.37	17.3	863	2.09	22	986	2.86	26	1092	3.63	30	4600	1120	305	0.34	5.2	378	0.47	5.8	514	0.87	11.5	624	1.16	14.0	718	1.44	17.5	866	2.17	22	989	2.96	26	1096	3.77	30	4800	1168	314	0.38	5.8	381	0.50	6.0	517	0.93	12.4	624	1.24	14.0	720	1.52	17.7	869	2.25	23	992	3.07	26	1100	3.91	31	5000	1217	323	0.42	6.5	385	0.54	6.2	521	0.98	13.6	624	1.33	14.0	721	1.61	17.8	872	2.33	23	995	3.18	27	1104	4.05	31	5200	1266	333	0.47	5.8	389	0.59	6.5	525	1.03	14.8	625	1.42	14.1	721	1.72	17.8	875	2.42	24	999	3.28	28	1107	4.18	32	5400	1314	342	0.52	6.9	394	0.63	6.8	528	1.07	15.8	626	1.51	14.2	721	1.83	17.8	877	2.52	24	1002	3.39	28	1110	4.31	32	5600	1363	352	0.57	6.8	400	0.68	7.1	530	1.11	16.8	629	1.59	14.6	721	1.95	17.8	879	2.63	25	1005	3.50	28	1113	4.44	33	5800	1412	363	0.63	7.3	406	0.74	7.5	531	1.15	16.9	632	1.67	15.2	721	2.07	17.8	881	2.75	26	1007	3.61	29	1116	4.58	33	6000	1461	373	0.69	7.7	413	0.80	7.8	531	1.19	17.0	636	1.75	15.9	722	2.19	18.0	882	2.88	26	1010	3.73	29	1119	4.71	34	6200	1509	384	0.76	8.1	420	0.86	8.5	532	1.24	17.0	640	1.82	16.6	723	2.30	18.0	883	3.02	26	1013	3.86	30	1122	4.84	34	6400	1558	394	0.83	8.4	428	0.93	10.2	533	1.29	17.1	643	1.89	17.1	725	2.42	18.2	883	3.18	26	1015	4.00	30	1125	4.98	35	6600	1607	405	0.91	8.7	436	1.00	11.8	536	1.36	17.4	647	1.96	17.8	728	2.52	18.5	883	3.35	26	1017	4.15	31	-- -- --	6800	1655	416	0.99	9.0	445	1.08	13.5	539	1.43	17.7	649	2.03	18.8	732	2.63	18.9	883	3.53	26	1018	4.31	31	-- -- --	7000	1704	427	1.07	9.5	454	1.16	15.5	543	1.51	12.0	650	2.09	15.9	736	2.73	19.3	883	3.71	26	1019	4.50	32	-- -- --	7200	1753	437	1.16	10.0	463	1.25	17.8	547	1.59	12.8	650	2.15	16.0	740	2.83	19.7	883	3.89	26	1019	4.70	32	-- -- --	7400	1801	448	1.26	10.5	473	1.34	17.4	552	1.68	13.5	651	2.21	16.0	743	2.92	20	884	4.07	27	1020	4.91	32	-- -- --	7600	1850	459	1.36	11.1	483	1.44	12.0	557	1.78	14.5	652	2.28	16.1	746	3.01	20	886	4.24	28	-- -- --	7800	1899	470	1.47	11.8	493	1.55	12.3	562	1.88	15.5	653	2.36	16.2	749	3.10	20	888	4.41	29	-- -- --	8000	1948	481	1.58	12.4	503	1.66	13.9	568	1.98	17.0	655	2.45	16.3	750	3.18	20	891	4.57	31	-- -- --	8200	1996	492	1.69	13.1	513	1.78	15.1	574	2.09	18.1	658	2.55	16.5	751	3.26	20	894	4.73	32	-- -- --	8400	2045	503	1.82	13.7	523	1.90	16.3	581	2.20	14.9	661	2.66	16.8	751	3.34	20	898	4.88	35	-- -- --	8600	2094	514	1.95	14.4	534	2.03	17.5	588	2.32	15.5	665	2.78	17.2	752	3.43	20	-- -- --	8800	2142	526	2.08	15.0	544	2.17	19.0	595	2.45	16.1	670	2.91	17.6	753	3.52	20	-- -- --

Performance shown is for installation Type B - Free Inlet, Ducted outlet, without filter section. Power rating (BHP) does not include drive losses.

Performance ratings do not include the effects of appurtenances in the airstream. The sound ratings shown are loudness values in fan sones at 5 ft. (1.5m) in a hemispherical free field calculated per AMCA Standard 301. Values shown are for installation Type B: free inlet fan sone levels.

Sone values not documented in unlisted areas. Twin data is derived from tests of single width fans.

SI CONVERSION FACTOR
CFM x .472 = L/s SP x .249 = kPa



Quietaire Corporation certifies that the 200, 200F2, 9200, & 9200-2 Series Duct Blowers shown hereon are licensed to bear the AMCA seal. The ratings shown are based on tests and procedures performed in accordance with AMCA publication 211 and publication 311 and comply with the requirements of the AMCA Certified Ratings Program.

200 & 9200 SERIES PERFORMANCE DATA

Model 218 & 9218												5 HP MAXIMUM 1" SHAFT						TIP SPEED = 4.76 x RPM WHEEL DIA. = 18.19"							
CFM	OUTLET VELOCITY FPM	1/8" SP			1/4" SP			1/2" SP			3/4" SP			1" SP			1-1/2" SP			2" SP			2-1/2" SP		
		RPM	BHP	SONES	RPM	BHP	SONES	RPM	BHP	SONES	RPM	BHP	SONES	RPM	BHP	SONES	RPM	BHP	SONES	RPM	BHP	SONES	RPM	BHP	SONES
3000	972	255	0.20	3.0	321	0.29	6.3	429	0.47	--	533	0.72	--	615	0.97	--	748	1.50	--	860	2.06	--	957	2.68	--
3200	1037	264	0.23	3.7	325	0.33	7.6	428	0.51	--	531	0.77	--	616	1.03	--	750	1.59	--	861	2.16	--	959	2.79	--
3400	1102	273	0.27	4.8	330	0.36	8.0	432	0.56	--	529	0.82	--	615	1.10	--	751	1.67	--	863	2.27	--	961	2.91	--
3600	1167	282	0.31	6.5	336	0.41	8.4	437	0.61	--	526	0.86	--	614	1.16	--	753	1.76	--	865	2.39	--	963	3.03	--
3800	1232	292	0.35	8.9	343	0.45	8.0	442	0.67	8.0	523	0.89	--	613	1.22	--	754	1.84	--	867	2.50	--	965	3.17	--
4000	1297	302	0.40	10.1	351	0.50	8.6	448	0.74	8.6	526	0.97	--	610	1.28	--	754	1.93	--	868	2.62	--	967	3.32	--
4200	1362	312	0.45	11.0	359	0.56	7.2	452	0.81	9.1	530	1.04	--	607	1.33	--	754	2.03	--	869	2.73	--	969	3.46	--
4400	1426	323	0.51	6.0	367	0.61	7.8	457	0.88	9.7	534	1.12	--	604	1.38	--	752	2.13	--	870	2.84	--	970	3.60	--
4600	1491	334	0.58	6.6	376	0.68	8.5	462	0.95	10.3	540	1.21	11.7	606	1.48	--	751	2.22	--	871	2.96	--	971	3.75	--
4800	1556	345	0.65	7.4	385	0.75	9.2	466	1.02	8.8	546	1.31	12.5	610	1.58	--	749	2.31	--	870	3.09	--	972	3.89	--
5000	1621	356	0.72	8.2	395	0.83	9.9	473	1.11	10.3	551	1.41	13.6	615	1.69	--	746	2.39	--	869	3.22	--	973	4.03	--
5200	1686	367	0.80	8.8	404	0.91	10.5	479	1.20	10.8	555	1.51	15.0	620	1.80	14.4	742	2.46	--	868	3.35	--	973	4.18	--
5400	1751	378	0.89	9.7	414	1.01	11.1	487	1.29	11.3	560	1.61	17.2	627	1.92	16.4	739	2.55	--	866	3.47	--	973	4.35	--
5600	1816	390	0.98	10.6	424	1.10	11.6	494	1.39	11.8	565	1.72	20	632	2.05	16.9	742	2.69	--	864	3.58	--	972	4.51	--
5800	1881	401	1.08	11.4	435	1.21	12.1	502	1.50	12.4	569	1.84	14.4	636	2.18	18.3	746	2.84	--	861	3.69	--	971	4.67	--
6000	1945	413	1.19	12.1	445	1.32	12.8	510	1.61	13.0	575	1.95	14.7	641	2.32	20	750	3.00	--	857	3.79	--	969	4.82	--
6200	2010	424	1.30	12.9	456	1.44	12.3	519	1.73	13.7	581	2.08	15.2	646	2.46	23	755	3.16	--	853	3.89	--	967	4.96	--
6400	2075	436	1.42	13.7	466	1.56	13.1	527	1.85	14.4	588	2.22	15.7	650	2.61	26	761	3.33	20	856	4.08	--	--	--	
6600	2140	448	1.55	14.6	477	1.70	14.0	536	1.98	15.2	595	2.36	16.4	655	2.75	17.5	767	3.52	21	859	4.27	--	--	--	
6800	2205	460	1.69	15.4	488	1.84	14.8	545	2.13	16.5	603	2.51	17.1	660	2.90	17.9	772	3.71	22	863	4.48	--	--	--	
7000	2270	472	1.83	16.2	499	1.98	15.8	555	2.28	18.8	611	2.66	18.2	666	3.07	18.4	777	3.91	23	868	4.69	--	--	--	
7200	2335	484	1.98	17.0	510	2.14	16.4	564	2.45	22	619	2.83	19.2	673	3.24	19.1	782	4.11	24	873	4.91	--	--	--	
7400	2399	496	2.14	17.9	522	2.31	17.4	574	2.63	26	627	3.00	20	680	3.42	19.7	786	4.32	25	--	--	--	--	--	
7600	2464	508	2.31	18.7	533	2.48	18.4	584	2.81	30	635	3.18	21	687	3.61	20	791	4.53	27	--	--	--	--	--	

Model 9218-2												10 HP MAXIMUM 1-3/16" SHAFT						TIP SPEED = 4.76 x RPM WHEEL DIA. = 18.19"							
CFM	OUTLET VELOCITY FPM	1/8" SP			1/4" SP			1/2" SP			3/4" SP			1" SP			1-1/2" SP			2" SP			2-1/2" SP		
		RPM	BHP	SONES	RPM	BHP	SONES	RPM	BHP	SONES	RPM	BHP	SONES	RPM	BHP	SONES	RPM	BHP	SONES	RPM	BHP	SONES	RPM	BHP	SONES
6000	972	255	0.40	3.8	321	0.58	7.6	429	0.95	13.1	533	1.45	19.1	615	1.95	24.1	748	3.00	30.1	860	4.12	36.1	957	5.36	42.1
6400	1037	264	0.46	4.7	325	0.65	9.1	428	1.02	14.1	531	1.54	20.1	616	2.06	25.1	750	3.17	31.1	861	4.31	37.1	959	5.59	43.1
6800	1102	273	0.53	5.9	330	0.73	10.1	432	1.12	15.1	529	1.63	21.1	615	2.19	26.1	751	3.34	32.1	863	4.54	38.1	961	5.82	44.1
7200	1167	282	0.61	6.8	336	0.81	11.1	437	1.23	16.1	526	1.71	22.1	614	2.32	27.1	753	3.51	33.1	865	4.77	39.1	963	6.06	45.1
7600	1232	292	0.70	7.7	343	0.90	12.1	442	1.35	17.1	523	1.79	23.1	613	2.44	28.1	754	3.68	34.1	867	5.00	40.1	965	6.35	46.1
8000	1297	302	0.80	8.6	351	1.00	13.1	448	1.48	18.1	526	1.93	24.1	610	2.55	29.1	754	3.86	35.1	868	5.23	41.1	967	6.64	47.1
8400	1362	312	0.91	9.5	359	1.11	14.1	452	1.61	19.1	530	2.09	25.1	607	2.66	30.1	754	4.06	36.1	869	5.46	42.1	969	6.92	48.1
8800	1426	323	1.03	10.4	367	1.23	15.1	457	1.75	20.1	534	2.25	26.1	604	2.77	31.1	752	4.25	37.1	870	5.68	43.1	970	7.21	49.1
9200	1491	334	1.15	11.3	376	1.36	16.1	462	1.90	21.1	540	2.42	27.1	606	2.96	32.1	751	4.44	38.1	871	5.92	44.1	971	7.49	50.1
9600	1556	345	1.29	12.2	385	1.50	17.1	466	2.05	22.1	546	2.61	28.1	610	3.16	33.1	749	4.61	39.1	870	6.18	45.1	972	7.78	51.1
10000	1621	356	1.44	13.1	395	1.66	18.1	473	2.21	23.1	551	2.81	29.1	615	3.37	34.1	746	4.78	40.1	869	6.44	46.1	973	8.05	52.1
10400	1686	367	1.60	14.0	404	1.83	19.1	479	2.39	24.1	555	3.02	30.1	620	3.60	35.1	742	4.93	41.1	868	6.69	47.1	973	8.37	53.1
10800	1751	378	1.78	14.9	414	2.01	20.1	487	2.58	25.1	560	3.23	31.1	627	3.84	36.1	739	5.10	42.1	866	6.93	48.1	973	8.70	54.1
11200	1816	390	1.96	15.8	424	2.21	21.1	494	2.78	26.1	565	3.45	32.1	632	4.10	37.1	742	5.38	43.1	864	7.16	49.1	972	9.02	55.1
11600	1881	401	2.16	16.7	435	2.42	22.1	502	2.99	27.1	569	3.67	33.1	636	4.37	38.1	746	5.68	44.1	861	7.38	50.1	971	9.33	56.1
12000	1945	413	2.38	17.6	445	2.64	23.1	510	3.21	28.1	575	3.91	34.1	641	4.64	39.1	750	5.99	45.1	857	7.58	51.1	969	9.63	57.1
12400	2010	424	2.60	18.5	456	2.87	24.1	519	3.45	29.1	581	4.16	35.1	646	4.92	40.1	755	6.32	46.1	853	7.78	52.1	967	9.92	58.1
12800	2075	436	2.84	19.4	466	3.12	25.1	527	3.70	30.1	588	4.43	36.1	650	5.21	41.1	761	6.67	47.1	856	8.16	53.1	--	--	--
13200	2140	448	3.10	20.3	477	3.39	26.1	536	3.96	31.1	595	4.72	37.1	655	5.50	42.1	767	7.03	48.1	859	8.55	54.1	--	--	--
13600	2205	460	3.37	21.2	488	3.67	27.1	545	4.25	32.1	603	5.02	38.1	660	5.81	43.1	772	7.42	49.1	863	8.96	55.1	--	--	--
14000	2270	472	3.66	22.1	499	3.97	28.1	555	4.57	33.1	611	5.33	39.1	666	6.14	44.1	777	7.81	50.1	868	9.38	56.1	--	--	--
14400	2335	484	3.97	23.0	510	4.28	29.1	564	4.90	34.1	619	5.65	40.1	673	6.48	45.1	782	8.22	51.1	873	9.83	57.1	--	--	--
14800	2399	496	4.29	23.9	522	4.61	30.1	574	5.25	35.1	627	5.99	41.1	680	6.85	46.1	786	8.63	52.1	--	--	--	--	--	--
15200	2464	508	4.63	24.8	533	4.96	31.1	584	5.62	36.1	635	6.35	42.1	687	7.22	47.1	791	9.06	53.1	--	--	--	--	--	--



Quietaire Corporation certifies that the 200, 200-2, 9200, & 9200-2 Series Duct Blowers shown hereon are licensed to bear the AMCA seal. The ratings shown are based on tests and procedures performed in accordance with AMCA publication 211 and publication 311 and comply with the requirements of the AMCA Certified Ratings Program.

9200 SERIES PERFORMANCE DATA

Model 9220

15 HP MAXIMUM
1-7/16" SHAFT

TIP SPEED = 5.35 x RPM
WHEEL DIA. = 20.44"

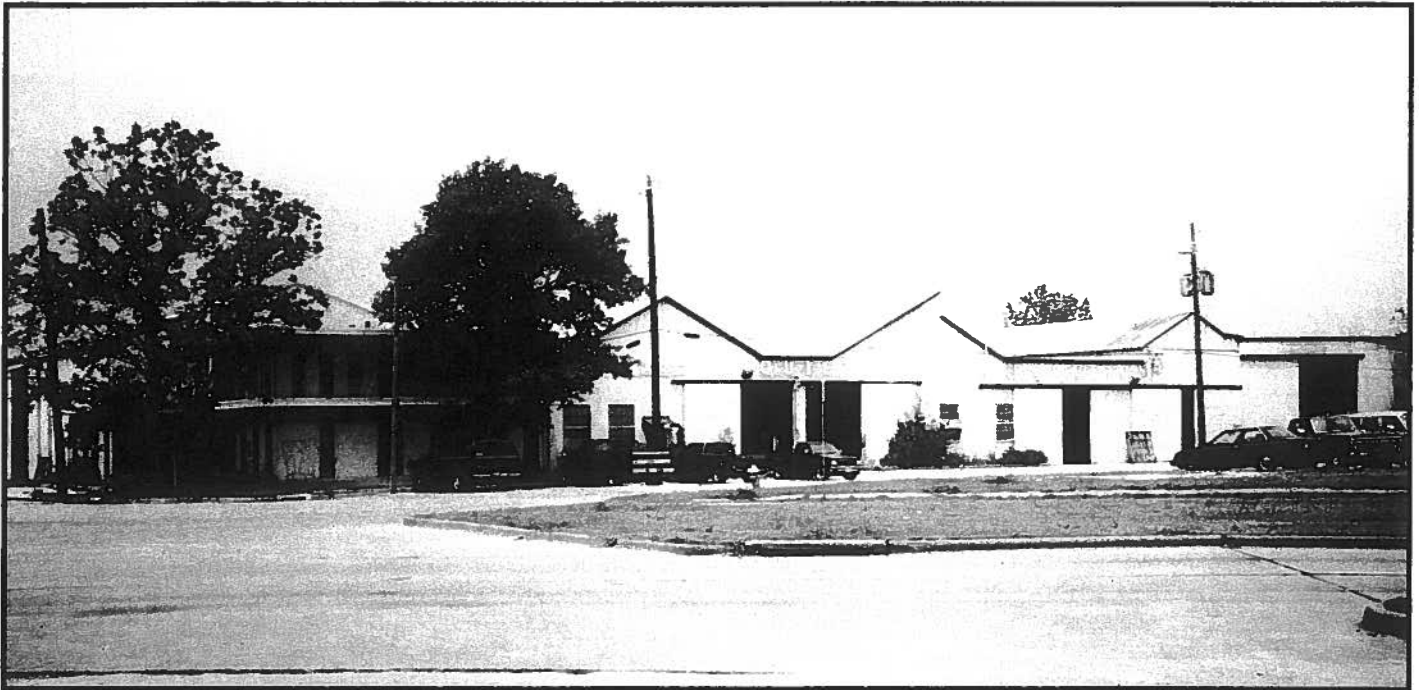
CFM	OUTLET VELOCITY FPM	1/8" SP			1/4" SP			1/2" SP			3/4" SP			1" SP			1-1/2" SP			2" SP			2-1/2" SP		
		RPM	BHP	SONES	RPM	BHP	SONES	RPM	BHP	SONES	RPM	BHP	SONES	RPM	BHP	SONES	RPM	BHP	SONES	RPM	BHP	SONES	RPM	BHP	SONES
6000	1303	336	0.84	13.3	373	1.00	9.1	446	1.35	7.8	511	1.75	10.0	569	2.14	11.8	674	2.99	16.6	765	3.86	20	845	4.75	23
6250	1357	347	0.94	14.7	382	1.10	9.8	453	1.46	8.0	517	1.87	10.3	574	2.28	12.1	678	3.15	17.1	768	4.06	20	848	4.95	24
6500	1411	358	1.04	14.4	392	1.21	10.5	461	1.58	8.5	523	2.00	10.6	580	2.43	12.4	682	3.31	18.1	772	4.26	21	852	5.19	24
6750	1465	370	1.15	14.1	402	1.33	11.2	468	1.71	8.9	530	2.13	10.5	585	2.58	12.7	685	3.47	18.7	776	4.46	21	855	5.43	24
7000	1520	381	1.27	13.8	412	1.46	11.8	476	1.85	9.4	536	2.28	10.9	591	2.74	13.2	690	3.66	19.8	780	4.67	21	859	5.68	25
7250	1574	392	1.40	13.6	423	1.59	12.3	484	1.99	9.8	543	2.42	11.4	597	2.90	13.7	695	3.86	21	783	4.88	22	863	5.93	25
7500	1628	404	1.54	13.5	433	1.73	12.7	492	2.14	10.3	551	2.58	11.9	604	3.07	14.5	700	4.06	22	787	5.09	22	867	6.19	25
7750	1683	415	1.68	13.3	444	1.88	13.2	500	2.30	10.7	558	2.75	12.3	610	3.25	14.0	705	4.28	24	791	5.31	22	871	6.45	26
8000	1737	427	1.84	13.3	455	2.05	13.3	509	2.47	11.2	565	2.94	12.8	617	3.44	14.5	711	4.50	25	795	5.55	23	874	6.71	26
8250	1791	439	2.00	13.3	465	2.22	13.3	518	2.65	11.8	573	3.13	13.4	624	3.63	15.0	716	4.72	27	800	5.81	23	878	6.97	26
8500	1845	450	2.18	13.3	476	2.40	13.3	528	2.84	12.4	581	3.33	14.0	631	3.84	15.5	722	4.96	29	805	6.08	24	882	7.24	27
8750	1900	462	2.36	13.3	487	2.59	13.4	537	3.05	12.9	588	3.54	14.5	638	4.05	16.0	728	5.20	31	810	6.36	25	885	7.51	27
9000	1954	474	2.56	13.3	498	2.79	13.5	547	3.26	13.5	596	3.76	15.1	646	4.29	16.7	735	5.45	33	815	6.64	26	890	7.83	27
9250	2008	486	2.77	13.4	510	3.00	13.6	557	3.48	14.1	604	3.99	15.7	653	4.53	17.3	741	5.71	36	821	6.94	27	895	8.15	28
9500	2063	498	2.98	13.5	521	3.22	13.7	567	3.72	14.8	613	4.23	16.8	661	4.79	18.0	748	5.98	20	827	7.24	28	900	8.49	28
9750	2117	509	3.21	13.6	532	3.46	14.0	577	3.97	15.7	622	4.48	18.0	668	5.05	19.1	754	6.26	21	833	7.55	29	905	8.84	29
10000	2171	521	3.45	13.7	543	3.71	14.5	587	4.22	17.0	631	4.75	19.5	676	5.33	20	761	6.55	21	839	7.87	31	910	9.19	29
10250	2226	533	3.70	14.0	555	3.96	15.1	598	4.49	18.9	640	5.04	21	684	5.62	22	768	6.85	22	845	8.20	32	916	9.56	30
10500	2280	545	3.96	14.6	566	4.23	15.7	608	4.78	21	650	5.33	23	692	5.91	23	776	7.16	22	851	8.54	33	921	9.93	30
10750	2334	557	4.23	15.2	578	4.52	16.6	619	5.07	24	659	5.64	26	700	6.22	24	783	7.48	23	858	8.90	34	927	10.32	31
11000	2388	568	4.52	15.8	589	4.81	18.2	629	5.38	27	669	5.96	29	709	6.55	25	790	7.84	24	864	9.26	28	933	10.71	31
11250	2443	580	4.82	16.9	601	5.12	20	640	5.70	31	679	6.29	34	718	6.89	27	798	8.21	24	871	9.63	27	939	11.12	32
11500	2497	592	5.13	18.7	613	5.45	23	651	6.04	36	689	6.64	38	727	7.25	28	805	8.59	25	878	10.01	27	946	11.53	33
11750	2551	604	5.46	21	624	5.78	26	662	6.38	41	699	7.00	38	736	7.62	29	813	8.98	28	885	10.41	28	952	11.96	33
12000	2606	616	5.80	24	636	6.13	29	673	6.75	48	709	7.37	39	746	8.01	30	820	9.38	26	892	10.81	29	958	12.40	34

Model 9220-2

40 HP MAXIMUM
2-1/4" SHAFT

TIP SPEED = 5.35 x RPM
WHEEL DIA. = 20.44"

CFM	OUTLET VELOCITY FPM	1/8" SP			1/4" SP			1/2" SP			3/4" SP			1" SP			1-1/2" SP			2" SP			2-1/2" SP		
		RPM	BHP	SONES	RPM	BHP	SONES	RPM	BHP	SONES	RPM	BHP	SONES	RPM	BHP	SONES	RPM	BHP	SONES	RPM	BHP	SONES	RPM	BHP	SONES
12000	1303	336	1.69	18.0	373	2.00	11.0	446	2.70	9.2	511	3.50	12.1	569	4.29	14.4	674	5.99	19.8	765	7.72	24	845	9.50	28
12500	1357	347	1.88	17.9	382	2.21	11.8	453	2.92	9.6	517	3.74	12.5	574	4.57	14.7	678	6.30	20	768	8.11	24	848	9.89	29
13000	1411	358	2.09	17.3	392	2.43	12.6	461	3.16	10.3	523	4.00	12.9	580	4.86	15.0	682	6.62	22	772	8.52	25	852	10.38	29
13500	1465	370	2.31	16.9	402	2.66	13.3	468	3.42	10.8	530	4.27	13.0	585	5.16	15.4	685	6.95	22	776	8.92	25	855	10.87	29
14000	1520	381	2.55	16.6	412	2.91	14.1	476	3.69	11.3	536	4.55	13.3	591	5.47	15.9	690	7.32	24	780	9.34	25	859	11.36	30
14500	1574	392	2.80	16.3	423	3.18	14.7	484	3.97	11.9	543	4.85	13.9	597	5.80	16.5	695	7.72	25	783	9.76	26	863	11.87	30
15000	1628	404	3.08	16.2	433	3.47	15.3	492	4.27	12.5	551	5.16	14.5	604	6.15	17.3	700	8.13	27	787	10.19	26	867	12.38	31
15500	1683	415	3.37	16.1	444	3.77	15.8	500	4.59	13.1	558	5.50	15.0	610	6.51	18.9	705	8.55	29	791	10.62	27	871	12.89	31
16000	1737	427	3.68	15.9	455	4.09	15.9	509	4.84	13.7	565	5.87	15.5	617	6.88	17.4	711	8.99	31	795	11.10	27	874	13.42	31
16500	1791	439	4.01	16.7	465	4.43	15.9	518	5.30	14.3	573	6.26	16.2	624	7.27	17.9	716	9.45	33	800	11.62	28	878	13.95	32
17000	1845	450	4.36	15.9	476	4.79	16.0	528	5.69	15.1	581	6.66	16.8	631	7.67	18.8	722	9.92	35	805	12.16	29	882	14.48	32
17500	1900	462	4.73	15.9	487	5.17	16.1	537	6.09	15.7	588	7.08	17.4	638	8.09	19.2	728	10.40	38	810	12.71	30	885	15.02	32
18000	1954	474	5.12	16.0	498	5.58	16.3	547	6.52	16.4	596	7.52	18.1	646	8.57	20	735	10.91	41	815	13.28	31	890	15.65	33
18500	2008	486	5.53	16.1	510	6.00	16.4	557	6.97	17.1	605	7.97	18.9	653	9.06	21	741	11.43	43	821	13.87	33	895	16.31	33
19000	2063	498	5.97	16.2	521	6.45	16.6	567	7.44	18.0	613	8.45	20	661	9.58	22	748	11.97	24	827	14.48	34	900	16.98	34
19500	2117	509	6.42	16.4	532	6.92	17.1	577	7.93	18.9	622	8.97	22	668	10.11	23	754	12.53	25	833	15.10	36	905	17.67	34
20000	2171	521	6.90	16.6	543	7.41	17.7	587	8.45	20	631	9.51	23	676	10.66	24	761	13.10	25	839	15.75	37	910	18.38	35
20500	2226	533	7.40	17.1	555	7.93	18.3	598	8.99	22	640	10.07	25	684	11.24	26	768	13.70	26	845	16.41	39	916	19.11	36
21000	2280	545	7.92	17.8	566	8.47	18.0	608	9.55	25	650	10.66	28	692	11.83	28	776	14.32	27	851	17.09	40	921	19.86	36
21500	2334	557	8.47	18.4	578	9.03	20	619	10.14	26	659	11.28	31	700	12.45	29	783	14.96	28	858	17.79	42	927	20.63	37
22000	2388	568	9.04	19.1	589	9.63	21	629	10.76	33	669	11.92	36	709	13.10	30	790	15.68	28	864	18.52	31	933	21.42	38
22500	2443	580	9.64	20	601	10.25	24	640	11.40	38	679	12.58	41	718	13.79	32	798	16.41	29	871	19.26	32	939	22.23	39
23000	2497	592	10.26	22	613	10.89	28	651	12.07	43	689	13.28	44	727	14.50	34	805	17.17	30	878	20.03	33	946	23.07	40
23500	2551	604	10.91	25	624	11.57	31	662	12.77	50	699	14.00	47	736	15.25	35	813	17.96	31	885	20.82	34	952	23.92	40
24000	2606	616	11.59	28	636	12.27	36	673	13.50	59	709	14.75	49	746	16.02	37	820	18.76	32	892	21.63	34	958	24.80	41



The Quietaire Corporation is located in the heart of Houston's industrial area. The plant is convenient to freeways, railroad and steamship facilities.

Located in Houston, Texas, Quietaire is a manufacturer of quality ventilation equipment with 60 years of experience in ventilation and manufacturing. Quietaire knows the importance of quality performance and customer service. Manufacturing facilities are continually being improved as

modern technology and ingenuity demands. Modern computer assisted machinery and automated tooling assure close tolerances so that finished products operate as they are designed.

Warranty

Warranty and Disclaimer: Quietaire Corporation extends this limited warranty to the original buyer and warrants that products manufactured by Quietaire shall be free from original defects in workmanship and materials for one year from date of shipment, provided same have been properly stored, installed service, maintained and operated. This warranty shall not apply to products which have been altered or repaired in any way so as to effect its performance, without Quietaire's express authorization, or altered or reliability, nor which have been improperly installed or subjected to misuse, negligence, or accident, or incorrectly used in combination with other substances. The Buyer assumes all risks and liability for results of; use of the products. Warranties on purchased parts, such as electric motor and controls are limited to the terms of warranty extended by our supplier.

Limitation Of Remedy And Damages: All claims under this warranty must be made in writing and delivered to Quietaire Corporation 505 North Hutcheson, Houston, Texas 77003 within 15 days after discovery of the defect and prior to the expiration of one year from the date of shipment by Quietaire of the product claimed defective, and Buyer shall be barred from any remedy if Buyer fails to make such claim within such period.

Within 30 days after receipt of a timely claim, Quietaire shall have the option either to inspect the product while in Buyer's possession or to request Buyer to return the product to Quietaire at Buyer's expense for inspection by Quietaire. Quietaire shall replace, or at its option repair, free of charge, any product it determines to be defective, and it shall ship the repaired or replacement product to Buyer F.O.B. point of shipment; provided, however, if circumstances are such as Quietaire judgment to prohibit repair or replacement to remedy the warranted defects, the buyer's sole and exclusive remedy shall be a refund to the buyer of any part of the invoice price, paid to Quietaire for the defective product or part.

Quietaire is not responsible for the cost of removal of the defective product or part, damages due to removal, or any expenses incurred in shipping the product or part to or from Quietaire plant, or the installation of the repaired or replaced product or part.

Implied warranties, when applicable, shall commence upon the same date as the express warranty provided above, and shall except for warranties of title, extend only for the duration of the express warranty provided above. Some states do not allow limitations on how long an implied warranty lasts, so the above limitation may not apply to you. The only remedy provided to you under an applicable implied warranty and the express warranty shall be the remedy provided under the express warranty, subject to the terms and conditions contained therein. Quietaire shall not be liable for incidental and consequential losses and damages under the express warranty, any applicable implied warranty, or claims for negligence, except to the extent that his limitation is found to be unenforceable under applicable state law. Some states do not allow exclusion or limitation of incidental or consequential damages, so the above limitation or exclusion may not apply to you. The warranty gives you specific legal rights, and you may also have other rights which vary from state to state.

No employee, agent, dealer, or other person is authorized to give any warranties on behalf of Quietaire or to assume for Quietaire any other liability in connection with any of its products except in writing and signed by an officer of Quietaire.

Technical Advice And Recommendation, Disclaimer: Notwithstanding any past practice or dealings or any custom of the trade, sales shall not include the furnishing of technical advice or assistance or system design. Any such assistance shall be at Quietaire sole option and may be subject to additional charge.

Quietaire assumes no obligation or liability on account of any recommendations, opinions, or advice as to the choice, installation or use of products. Any such recommendations, opinions or advice are given and shall be accepted at your own risk and shall not constitute any warranty or guarantee of such products or their performance.

For Distributor Nearest You -

Telephone 713 228-9421

Fax 713 228-9425

Quietaire

Quietaire, Corporation
505 North Hutcheson
Houston, Texas 77003

WEB SITE: <http://www.quietaire.com> E-MAIL: info@quietaire.com

CATALOG FC400