



JencoFan, Div. of Soler & Palau Ventilation Group certifies that the Models CSF & LSF shown herein are licensed to bear the AMCA Seal. The ratings shown are based on test and procedures performed in accordance with AMCA Publication 211 and comply with the requirement of the AMCA Certified Ratings Program.



CSF/LSF 1.07



CENTRIFUGAL FILTERED SUPPLY FANS MODELS CSF & LSF

JANUARY 2007

Model CSF - Hooded Design

Model LSF - Louvered Penthouse Design

Application

Model CSF and Model LSF units are roof mounted, filtered supply fans rated from 375 to over 13,000 CFM, with static pressure capabilities to 2 inches. They are used to replace exhausted fumes, vapors and gases with fresh, filtered make-up air in commercial and industrial applications such as manufacturing and assembly areas, kitchens, athletic clubs and many others.

Model CSF's rugged, heavy-gauge galvanized hood and stack provide maximum weather protection and long life. Model LSF's architecturally pleasing, heavy-gauge aluminum louver design provides long life and the utmost in performance efficiency. Both models are backed with the industry's best warranty – five year fan/bearing protection and a one year motor warranty. (See warranty details on page 5.)

All models are belt driven for easier performance adjustment and quieter operation. Adjustable motor pulleys further simplify fan speed changes.

Construction/Specification Checklist

Blower/Housing

- Statically and dynamically balanced forward curved wheel.
- 12-gauge galvanized steel blower plate/discharge opening.
- Heavy-gauge galvanized steel housing.
- Prepunched mounting holes.
- Conduit opening for wiring from below unit.
- Disconnect switch is standard equipment (except two speed and explosion proof).

Hooded/Louvered Top

- Heavy-gauge aluminum louvered design. (LSF)
- Heavy-gauge galvanized steel hood. (CSF)
- Quick-release latches for removal from housing.
- Insulated for sound absorption and moisture barrier.
- Oversized for weather protection.
- 1" washable aluminum mesh filters.
- Mitered cut and welded corners. (LSF)

Drives

- Adjustable motor pulleys are standard.
- Sized for minimum 150% of drive horsepower.
- Pivoting motor plate for belt tensioning.
- Non-static oil resistant V-belts.

Bearings

- Five year warranty.
- Heavy-duty ball bearing type.
- Prelubricated and permanently sealed.

Motors

- One year warranty.
- Brands are nationally recognized and locally serviced.
- Open drip-proof construction is standard.
- Optional motor enclosures and types can be specified.

Certifications

- AMCA Air Licensed.
- UL705 Listed Power Roof Ventilator label assures electrical reliability.
- UL705 Canada assures electrical reliability for Canadian use.
- UL label must be specified when needed.

Options/Accessories

Roof Curb: Prefabricated heavy-gauge galvanized steel, welded construction, 8" high with 1-1/2" wood nailer. Options include burglar bars, single and double pitch construction, and additional curb heights.

Dampers: Motor operated for positive closure against backdraft or automatic (counter balanced).

Motors: Two speed motors through 2HP and high efficiency motors are available.

Duct Adaptor: For ease in connecting discharge duct to fan outlet.

Side Discharge: For convenient connection to a supply duct when mounted on roof where the inside ceiling height is limited (CSF). Not available on CSF9.

Special Coatings: Epoxy, Heresite and Eisenheiss are available when special coatings are required.

Optimizer Selection Program

Please refer to JencoFan's Optimizer Program for fan curve, submittal information and other details of the CSF and LSF series and other JencoFan products. Contact your representative or factory for a copy. Log onto JencoFan's website for additional information at: www.jencofan.com

All specifications are subject to change without notice unless approved in submittal by JencoFan.



AIR PERFORMANCE DATA

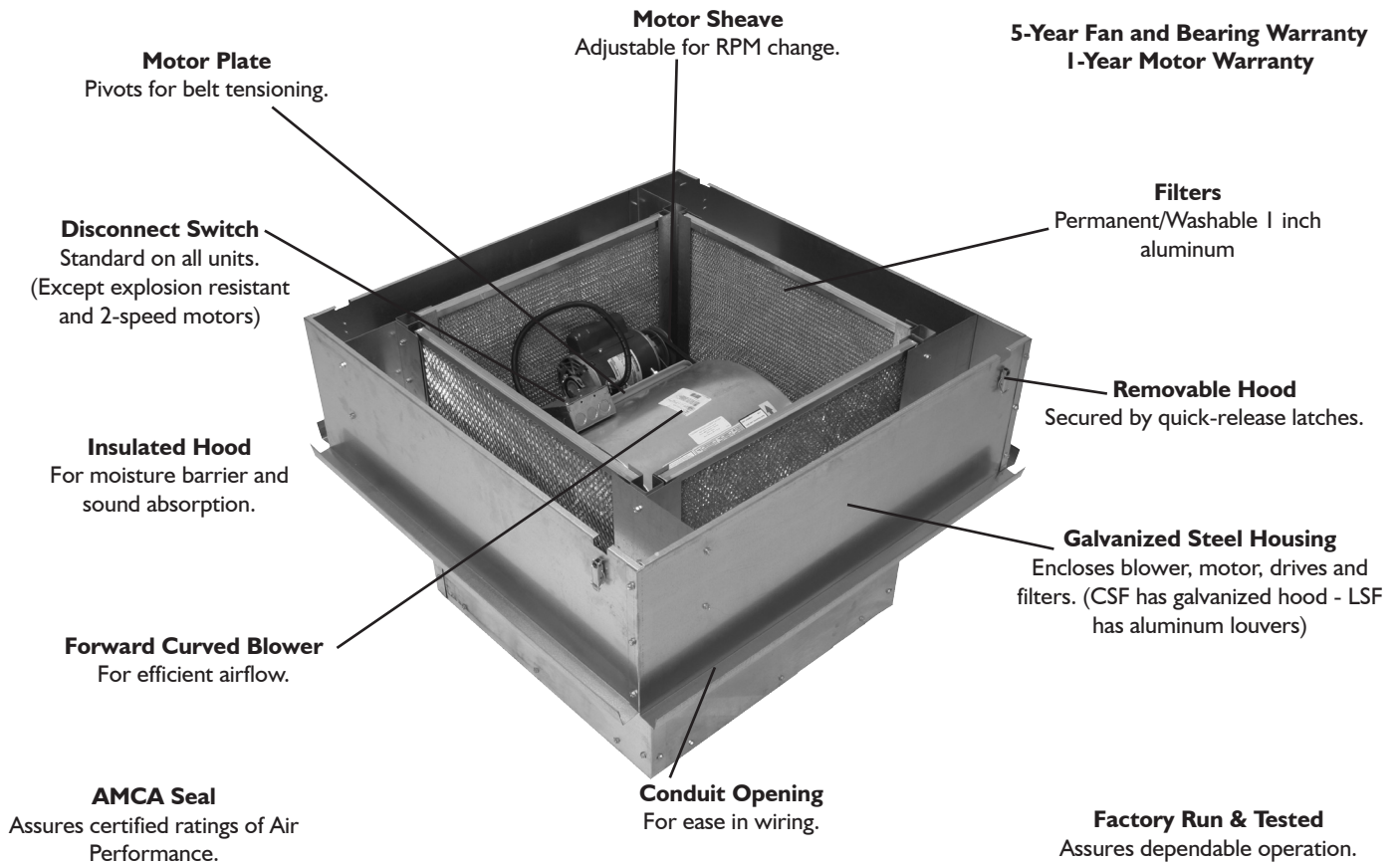
| MODEL | HP | CFM | OV | RPM / BHP @ Static Pressure | | | | | | | | | | HP |
|-------|-------|------|------|-----------------------------|------|------|------|------|------|------|-------|-------|------|-----|
| | | | | 1/8 | 1/4 | 3/8 | 1/2 | 5/8 | 3/4 | 1 | 1-1/4 | 1-1/2 | 2 | |
| 9 | 1/4 | 375 | 458 | 389 | 0.02 | | | | | | | | | |
| | | 475 | 580 | 394 | 0.02 | | | | | | | | | |
| | | 575 | 702 | 406 | 0.03 | 552 | 0.05 | | | | | | | |
| | | 675 | 825 | 425 | 0.04 | 558 | 0.06 | 675 | 0.09 | | | | | |
| | | 775 | 947 | 450 | 0.05 | 569 | 0.08 | 680 | 0.11 | | | | | |
| | | 875 | 1069 | 475 | 0.07 | 585 | 0.09 | 688 | 0.13 | 784 | 0.16 | | | |
| | | 975 | 1191 | 502 | 0.09 | 606 | 0.12 | 700 | 0.15 | 791 | 0.18 | 876 | 0.23 | 1/4 |
| | | 1075 | 1313 | 533 | 0.11 | 630 | 0.14 | 717 | 0.17 | 801 | 0.21 | 883 | 0.25 | 1/3 |
| | | 1175 | 1435 | 567 | 0.13 | 656 | 0.17 | 738 | 0.21 | 816 | 0.24 | 893 | 0.29 | 1/2 |
| | | 1275 | 1558 | 603 | 0.17 | 682 | 0.20 | 762 | 0.24 | 835 | 0.28 | 906 | 0.33 | 3/4 |
| | | 1375 | 1680 | 640 | 0.20 | 708 | 0.24 | 787 | 0.28 | 856 | 0.33 | 923 | 0.37 | |
| | | 1475 | 1802 | 678 | 0.25 | 739 | 0.28 | 813 | 0.33 | 880 | 0.37 | 944 | 0.42 | |
| | 1/3 | 1575 | 1924 | 716 | 0.30 | 772 | 0.33 | 838 | 0.38 | 906 | 0.42 | 966 | 0.48 | |
| | 1/2 | 1675 | 2046 | 755 | 0.35 | 807 | 0.39 | 865 | 0.44 | 932 | 0.49 | 991 | 0.54 | |
| | | 1775 | 2168 | 794 | 0.42 | 842 | 0.45 | 895 | 0.50 | 957 | 0.56 | 1016 | 0.61 | |
| | | 1875 | 2290 | 833 | 0.48 | 879 | 0.52 | 927 | 0.57 | 982 | 0.63 | 1042 | 0.69 | |
| | 3/4 | 1975 | 2413 | 872 | 0.56 | 917 | 0.60 | 961 | 0.65 | 1010 | 0.71 | 1067 | 0.77 | |
| | | 2075 | 2535 | 911 | 0.64 | 955 | 0.69 | 996 | 0.74 | 1041 | 0.79 | 1093 | 0.86 | |
| | | 2175 | 2657 | 951 | 0.74 | 993 | 0.79 | 1032 | 0.83 | 1074 | 0.89 | 1120 | 0.95 | |
| | 1 | 2275 | 2779 | 990 | 0.84 | 1031 | 0.89 | 1069 | 0.94 | 1108 | 0.99 | 1150 | 1.06 | |
| | | 2375 | 2901 | 1030 | 0.94 | 1070 | 1.01 | 1106 | 1.06 | | | | | |
| 10 | 1/4 | 700 | 674 | 384 | 0.04 | | | | | | | | | |
| | | 825 | 795 | 403 | 0.05 | 531 | 0.08 | | | | | | | |
| | | 950 | 915 | 424 | 0.06 | 539 | 0.09 | 649 | 0.14 | | | | | |
| | | 1075 | 1035 | 446 | 0.08 | 555 | 0.12 | 654 | 0.16 | 749 | 0.20 | | | 1/4 |
| | | 1200 | 1156 | 471 | 0.10 | 575 | 0.14 | 664 | 0.18 | 753 | 0.23 | 838 | 0.29 | 1/3 |
| | | 1325 | 1276 | 496 | 0.12 | 596 | 0.17 | 681 | 0.21 | 761 | 0.26 | 841 | 0.32 | 1/2 |
| | | 1450 | 1397 | 522 | 0.15 | 618 | 0.20 | 701 | 0.25 | 774 | 0.30 | 848 | 0.36 | |
| | | 1575 | 1517 | 552 | 0.15 | 642 | 0.24 | 722 | 0.29 | 793 | 0.35 | 860 | 0.40 | |
| | | 1700 | 1638 | 584 | 0.23 | 667 | 0.28 | 744 | 0.34 | 814 | 0.40 | 877 | 0.46 | 3/4 |
| | 1/3 | 1825 | 1758 | 617 | 0.28 | 692 | 0.33 | 766 | 0.40 | 835 | 0.46 | 897 | 0.52 | |
| | | 1950 | 1879 | 651 | 0.33 | 717 | 0.39 | 790 | 0.45 | 856 | 0.52 | 918 | 0.58 | 1 |
| | | 2075 | 1999 | 685 | 0.39 | 744 | 0.45 | 815 | 0.52 | 879 | 0.59 | 939 | 0.66 | |
| | 1/2 | 2200 | 2119 | 720 | 0.46 | 774 | 0.52 | 841 | 0.59 | 902 | 0.67 | 961 | 0.74 | |
| | | 2325 | 2240 | 755 | 0.54 | 806 | 0.60 | 866 | 0.67 | 927 | 0.75 | 983 | 0.83 | |
| | | 2450 | 2360 | 790 | 0.63 | 838 | 0.68 | 892 | 0.75 | 952 | 0.84 | 1007 | 0.92 | |
| | 3/4 | 2575 | 2481 | 825 | 0.72 | 872 | 0.78 | 919 | 0.85 | 978 | 0.94 | 1032 | 1.03 | |
| | | 2700 | 2601 | 860 | 0.82 | 905 | 0.89 | 949 | 0.96 | 1003 | 1.04 | 1057 | 1.14 | |
| | | 2825 | 2722 | 895 | 0.94 | 939 | 1.00 | 981 | 1.07 | 1029 | 1.16 | 1082 | 1.26 | |
| | 1-1/2 | 2950 | 2842 | 931 | 1.06 | 974 | 1.13 | 1013 | 1.20 | 1056 | 1.28 | 1107 | 1.38 | |
| | | 3075 | 2962 | 966 | 1.19 | 1008 | 1.27 | 1046 | 1.34 | 1085 | 1.42 | 1132 | 1.52 | |
| | | 3200 | 3081 | 1002 | 1.34 | 1043 | 1.42 | 1080 | 1.49 | | | | | |
| 12 | 1/4 | 1150 | 806 | 354 | 0.06 | 454 | 0.09 | | | | | | | |
| | | 1300 | 912 | 371 | 0.08 | 466 | 0.11 | 550 | 0.15 | | | | | |
| | | 1450 | 1017 | 391 | 0.11 | 481 | 0.14 | 559 | 0.18 | 633 | 0.22 | | | 1/4 |
| | | 1600 | 1122 | 413 | 0.13 | 498 | 0.17 | 572 | 0.21 | 640 | 0.25 | 707 | 0.30 | 1/3 |
| | | 1750 | 1227 | 437 | 0.17 | 514 | 0.20 | 586 | 0.24 | 652 | 0.29 | 713 | 0.34 | |
| | | 1900 | 1332 | 463 | 0.21 | 533 | 0.25 | 603 | 0.29 | 665 | 0.34 | 724 | 0.39 | 1/2 |
| | | 2050 | 1438 | 490 | 0.25 | 553 | 0.30 | 619 | 0.34 | 680 | 0.39 | 737 | 0.44 | 3/4 |
| | 1/3 | 2200 | 1543 | 518 | 0.31 | 574 | 0.35 | 637 | 0.40 | 697 | 0.45 | 751 | 0.50 | |
| | 1/2 | 2350 | 1648 | 547 | 0.37 | 598 | 0.41 | 656 | 0.47 | 713 | 0.51 | 767 | 0.57 | 1 |
| | | 2500 | 1753 | 576 | 0.44 | 622 | 0.48 | 676 | 0.54 | 731 | 0.59 | 783 | 0.64 | |
| | | 2650 | 1858 | 606 | 0.52 | 648 | 0.56 | 697 | 0.62 | 749 | 0.68 | 800 | 0.73 | |
| | | 2800 | 1963 | 636 | 0.61 | 675 | 0.65 | 720 | 0.71 | 768 | 0.78 | 817 | 0.83 | |
| | 3/4 | 2950 | 2069 | 666 | 0.71 | 703 | 0.75 | 744 | 0.81 | 789 | 0.88 | 836 | 0.94 | |
| | | 3100 | 2174 | 697 | 0.82 | 731 | 0.86 | 769 | 0.92 | 811 | 0.99 | 855 | 1.06 | |
| | | 3250 | 2279 | 728 | 0.94 | 759 | 0.98 | 795 | 1.04 | 834 | 1.11 | 875 | 1.19 | |
| | 1-1/2 | 3400 | 2384 | 759 | 1.07 | 788 | 1.11 | 821 | 1.17 | 858 | 1.24 | 897 | 1.32 | |
| | | 3550 | 2489 | 790 | 1.22 | 818 | 1.26 | 849 | 1.31 | 883 | 1.38 | 919 | 1.47 | |
| | | 3700 | 2595 | 821 | 1.38 | 848 | 1.42 | 877 | 1.47 | 908 | 1.54 | 943 | 1.62 | |
| | | 3850 | 2700 | 852 | 1.55 | 878 | 1.59 | 905 | 1.64 | 935 | 1.71 | 967 | 1.79 | |
| | 2 | 4000 | 2805 | 884 | 1.74 | 908 | 1.78 | 934 | 1.83 | 962 | 1.89 | 992 | 1.97 | |
| | | 4150 | 2910 | 915 | 1.94 | 938 | 1.98 | 963 | 2.03 | | | | | |

Performance shown is for installation type B - free inlet, ducted outlet. Power rating (BHP) does not include drive losses. Performance ratings do not include the effects of appurtenances in the airstream.

| MODEL | HP | CFM | OV | RPM / BHP @ Static Pressure | | | | | | | | | | | HP | | | | | | |
|-------|-------|-------|-------|-----------------------------|------|------|------|------|------|------|------|------|------|-----|------|-----|------|-------|------|-------|-------|
| | | | | 1/8 | 1/4 | | 3/8 | | 1/2 | | 5/8 | | 3/4 | | | 1 | | 1-1/4 | | 1-1/2 | |
| 15 | 1/4 | 1625 | 813 | 282 | 0.08 | 365 | 0.13 | | | | | | | | | | | | | | |
| | | 1825 | 913 | 295 | 0.11 | 373 | 0.16 | 443 | 0.22 | | | | | | | | | | | | 1/4 |
| | | 2125 | 1063 | 317 | 0.15 | 388 | 0.21 | 452 | 0.27 | | | | | | | | | | | | 1/3 |
| | | 2325 | 1163 | 332 | 0.18 | 401 | 0.25 | 461 | 0.31 | 517 | 0.38 | | | | | | | | | | 1/2 |
| | | 2625 | 1313 | 357 | 0.25 | 421 | 0.31 | 477 | 0.39 | 529 | 0.46 | 579 | 0.54 | | | | | | | | 3/4 |
| | 1/3 | 2825 | 1413 | 375 | 0.30 | 435 | 0.37 | 489 | 0.44 | 539 | 0.52 | 587 | 0.61 | 632 | 0.69 | | | | | | |
| | 1/2 | 3125 | 1563 | 402 | 0.38 | 457 | 0.46 | 509 | 0.54 | 556 | 0.63 | 601 | 0.72 | 644 | 0.81 | 727 | 1.00 | | | | 1 |
| | | 3325 | 1663 | 420 | 0.45 | 473 | 0.54 | 523 | 0.62 | 569 | 0.71 | 612 | 0.80 | 654 | 0.90 | 732 | 1.09 | 809 | 1.31 | 881 | 1.54 |
| | 3/4 | 3625 | 1812 | 448 | 0.56 | 498 | 0.66 | 545 | 0.75 | 589 | 0.84 | 630 | 0.94 | 670 | 1.05 | 744 | 1.25 | 816 | 1.47 | | 1-1/2 |
| | | 3825 | 1913 | 468 | 0.65 | 515 | 0.75 | 560 | 0.85 | 603 | 0.95 | 643 | 1.05 | 681 | 1.16 | 754 | 1.37 | 823 | 1.60 | 890 | 1.84 |
| | 1 | 4125 | 2063 | 497 | 0.80 | 541 | 0.91 | 584 | 1.01 | 624 | 1.12 | 663 | 1.22 | 700 | 1.34 | 770 | 1.57 | 836 | 1.80 | 898 | 2.05 |
| | | 4325 | 2163 | 517 | 0.91 | 559 | 1.02 | 600 | 1.14 | 639 | 1.24 | 677 | 1.35 | 713 | 1.47 | 781 | 1.71 | 845 | 1.96 | 907 | 2.21 |
| | 1-1/2 | 4625 | 2313 | 547 | 1.10 | 587 | 1.22 | 625 | 1.34 | 663 | 1.46 | 699 | 1.57 | 734 | 1.69 | 800 | 1.94 | 861 | 2.20 | 920 | 2.47 |
| | | 4825 | 2413 | 567 | 1.24 | 606 | 1.36 | 643 | 1.49 | 679 | 1.61 | 714 | 1.73 | 748 | 1.85 | 812 | 2.11 | 873 | 2.38 | 931 | 2.65 |
| | | 5125 | 2563 | 598 | 1.47 | 634 | 1.60 | 669 | 1.73 | 704 | 1.86 | 737 | 1.99 | 770 | 2.12 | 832 | 2.39 | 891 | 2.67 | 947 | 2.96 |
| | 2 | 5325 | 2663 | 618 | 1.63 | 653 | 1.77 | 687 | 1.91 | 721 | 2.04 | 753 | 2.18 | 785 | 2.31 | 846 | 2.59 | 904 | 2.88 | | |
| | | 5625 | 2813 | 649 | 1.91 | 682 | 2.05 | 715 | 2.20 | 747 | 2.34 | 778 | 2.49 | 809 | 2.63 | 868 | 2.91 | | | | |
| | 3 | 5825 | 2913 | 670 | 2.11 | 702 | 2.26 | 734 | 2.41 | 765 | 2.56 | 795 | 2.71 | 825 | 2.86 | | | | | | |
| | | 6125 | 3063 | 701 | 2.44 | 732 | 2.59 | 762 | 2.75 | 792 | 2.90 | 821 | 3.06 | | | | | | | | |
| | | 6325 | 3163 | 722 | 2.67 | 752 | 2.83 | 781 | 2.99 | 810 | 3.16 | | | | | | | | | | |
| | | 6525 | 3263 | 743 | 2.93 | 772 | 3.09 | | | | | | | | | | | | | | |
| 18 | 1/3 | 2950 | 1041 | 314 | 0.22 | 376 | 0.30 | | | | | | | | | | | | | 1/3 | |
| | | 3300 | 1165 | 336 | 0.29 | 394 | 0.37 | | | | | | | | | | | | | 1/2 | |
| | 1/2 | 3650 | 1289 | 360 | 0.37 | 414 | 0.46 | 463 | 0.56 | | | | | | | | | | | 3/4 | |
| | | 4000 | 1412 | 384 | 0.47 | 434 | 0.56 | 481 | 0.67 | 524 | 0.78 | 564 | 0.89 | | | | | | | | |
| | 3/4 | 4350 | 1536 | 409 | 0.58 | 455 | 0.69 | 500 | 0.80 | 541 | 0.92 | 580 | 1.04 | | | | | | | 1 | |
| | | 4700 | 1660 | 435 | 0.71 | 478 | 0.82 | 520 | 0.95 | 560 | 1.07 | 597 | 1.20 | 632 | 1.33 | 699 | 1.59 | | | 1-1/2 | |
| | 1 | 5050 | 1783 | 461 | 0.87 | 501 | 0.99 | 541 | 1.11 | 579 | 1.25 | 615 | 1.38 | 649 | 1.52 | 713 | 1.80 | 773 | 2.08 | | 2 |
| | | 5400 | 1907 | 487 | 1.04 | 526 | 1.17 | 562 | 1.30 | 599 | 1.44 | 633 | 1.59 | 667 | 1.73 | 729 | 2.03 | 787 | 2.33 | 842 | 2.64 |
| | 1-1/2 | 5750 | 2030 | 514 | 1.24 | 550 | 1.37 | 585 | 1.51 | 619 | 1.66 | 653 | 1.81 | 685 | 1.97 | 745 | 2.28 | 802 | 2.59 | 855 | 2.92 |
| | | 6100 | 2154 | 541 | 1.47 | 575 | 1.60 | 608 | 1.75 | 641 | 1.90 | 673 | 2.06 | 704 | 2.23 | 763 | 2.55 | 818 | 2.89 | 870 | 3.22 |
| | 2 | 6450 | 2278 | 568 | 1.71 | 601 | 1.86 | 632 | 2.01 | 663 | 2.17 | 694 | 2.33 | 724 | 2.51 | 781 | 2.86 | 834 | 3.20 | 885 | 3.56 |
| | | 6800 | 2401 | 595 | 1.99 | 626 | 2.15 | 657 | 2.31 | 686 | 2.47 | 715 | 2.64 | 744 | 2.82 | 800 | 3.18 | 852 | 3.55 | 901 | 3.92 |
| | 3 | 7150 | 2525 | 622 | 2.03 | 652 | 2.46 | 681 | 2.63 | 710 | 2.79 | 737 | 2.97 | 765 | 3.15 | 819 | 3.54 | 870 | 3.92 | 918 | 4.31 |
| | | 7500 | 2648 | 650 | 2.64 | 679 | 2.81 | 707 | 2.98 | 734 | 3.15 | 760 | 3.33 | 787 | 3.52 | 839 | 3.92 | 888 | 4.33 | | |
| | 5 | 7850 | 2772 | 678 | 3.01 | 705 | 3.18 | 732 | 3.36 | 758 | 3.55 | 784 | 3.73 | 809 | 3.92 | 859 | 4.33 | | | | |
| | | 8200 | 2895 | 705 | 3.41 | 732 | 3.60 | 758 | 3.78 | 783 | 3.97 | 808 | 4.17 | 832 | 4.36 | | | | | | |
| | 7-1/2 | 8550 | 3019 | 733 | 3.85 | 759 | 4.04 | 784 | 4.24 | 808 | 4.43 | 833 | 4.63 | | | | | | | | |
| | | 8900 | 3143 | 761 | 4.32 | 786 | 4.52 | 810 | 4.73 | 833 | 4.93 | | | | | | | | | | |
| | 20 | 1/3 | 2800 | 725 | 212 | 0.12 | 280 | 0.20 | | | | | | | | | | | | | 1/3 |
| | | | 3340 | 865 | 230 | 0.18 | 287 | 0.26 | 342 | 0.35 | | | | | | | | | | | |
| | | 1/2 | 3880 | 1005 | 248 | 0.25 | 298 | 0.33 | 349 | 0.43 | 395 | 0.54 | | | | | | | | | 1/2 |
| 4420 | | | 1145 | 266 | 0.34 | 315 | 0.44 | 357 | 0.53 | 402 | 0.65 | 443 | 0.77 | | | | | | | 3/4 | |
| 3/4 | | 4960 | 1285 | 285 | 0.45 | 334 | 0.57 | 371 | 0.67 | 409 | 0.78 | 450 | 0.92 | 486 | 1.05 | | | | | 1 | |
| | | 5500 | 1425 | 305 | 0.59 | 351 | 0.72 | 389 | 0.84 | 421 | 0.95 | 457 | 1.08 | 493 | 1.23 | 559 | 1.52 | | | 1-1/2 | |
| 1 | | 6040 | 1565 | 326 | 0.75 | 369 | 0.90 | 407 | 1.04 | 438 | 1.16 | 468 | 1.28 | 501 | 1.42 | 566 | 1.75 | | | 2 | |
| | | 6580 | 1705 | 347 | 0.94 | 387 | 1.10 | 425 | 1.26 | 457 | 1.40 | 484 | 1.53 | 512 | 1.66 | 572 | 1.99 | 630 | 2.35 | | |
| 1-1/2 | | 7120 | 1845 | 369 | 1.16 | 407 | 1.33 | 443 | 1.51 | 475 | 1.68 | 502 | 1.82 | 528 | 1.96 | 581 | 2.27 | 637 | 2.65 | | |
| | | 7660 | 1984 | 391 | 1.42 | 427 | 1.60 | 461 | 1.79 | 493 | 1.98 | 521 | 2.15 | 546 | 2.30 | 593 | 2.60 | 644 | 2.97 | 696 | 3.39 |
| 2 | | 8200 | 2124 | 414 | 1.71 | 447 | 1.91 | 479 | 2.10 | 510 | 2.31 | 539 | 2.50 | 564 | 2.68 | 609 | 3.00 | 654 | 3.35 | 703 | 3.76 |
| | | 8740 | 2264 | 437 | 2.04 | 468 | 2.25 | 499 | 2.46 | 528 | 2.67 | 556 | 2.89 | 583 | 3.10 | 626 | 3.45 | 668 | 3.79 | 712 | 4.19 |
| 3 | | 9280 | 2404 | 460 | 2.41 | 490 | 2.64 | 519 | 2.86 | 547 | 3.08 | 574 | 3.31 | 600 | 3.54 | 645 | 3.94 | 684 | 4.30 | 723 | 4.67 |
| | | 9820 | 2544 | 484 | 2.83 | 512 | 3.07 | 539 | 3.31 | 566 | 3.54 | 592 | 3.78 | 618 | 4.02 | 664 | 4.49 | 702 | 4.87 | 739 | 5.25 |
| 5 | | 10360 | 2684 | 508 | 3.29 | 534 | 3.55 | 560 | 3.80 | 586 | 4.04 | 611 | 4.29 | 636 | 4.55 | 681 | 5.05 | 720 | 5.49 | 756 | 5.89 |
| | | 10900 | 2824 | 531 | 3.80 | 556 | 4.08 | 581 | 4.34 | 606 | 4.60 | 630 | 4.86 | 654 | 5.13 | 699 | 5.66 | 739 | 6.17 | 774 | 6.59 |
| | | 11440 | 2964 | 555 | 4.37 | 579 | 4.66 | 603 | 4.94 | 626 | 5.21 | 650 | 5.48 | 672 | 5.75 | 716 | 6.32 | 757 | 6.87 | 792 | 7.35 |
| 7-1/2 | | 11980 | 3103 | 579 | 4.98 | 602 | 5.29 | 625 | 5.59 | 647 | 5.87 | 670 | 6.16 | 691 | 6.44 | 734 | 7.03 | | | | |
| | | 12520 | 3244 | 604 | 5.66 | 625 | 5.98 | 647 | 6.29 | 668 | 6.60 | 690 | 6.89 | | | | | | | | |
| | | 13060 | 3383 | 628 | 6.39 | 648 | 6.73 | 669 | 7.06 | | | | | | | | | | | | |
| | | | 13600 | 3523 | 652 | 7.19 | 672 | 7.54 | | | | | | | | | | | | | |

Performance shown is for installation type B - free inlet, ducted outlet. Power rating (BHP) does not include drive losses. Performance ratings do not include the effects of appurtenances in the airstream.

CONSTRUCTION FEATURES



Typical Specification

Roof mounted, filtered supply fans shall be double width/double inlet, forward curved centrifugal blower type. Fan housing and drive components shall have a 5 year warranty. Motor warranty shall be 1 year. All units to be listed UL705. All units shall be AMCA Licensed for Air Performance. Model CSF hood and stack shall be heavy-gauge galvanized steel. Insulated hood to have quick release latches where tools are not required for removal. Model LSF stack selection shall be heavy-gauge galvanized steel with quick release latches and insulated top. Louvered section to be heavy-gauge aluminum with mitered cut and welded corners sized to help prevent rain and snow penetration. All bases to be prepunched for curb mounting. Bearings shall be sized for 200,000-hour (L50) life with a 5 year warranty. Motor sheaves shall be adjustable for a minimum 150% of drive horsepower. Fans shall be Model CSF or LSF manufactured by Jencofan, Jacksonville, Florida.

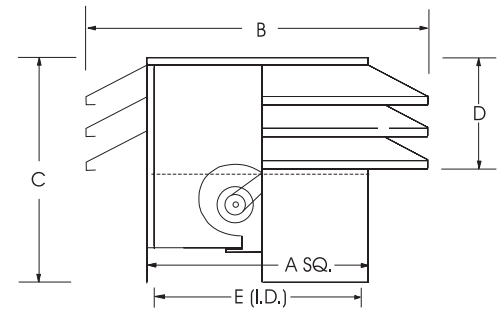
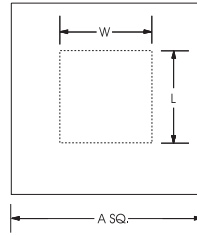
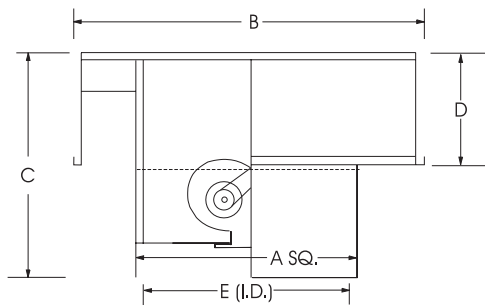
JENCOFAN LIMITED WARRANTY

Jencofan (manufacturer), 6393 Powers Avenue, Jacksonville, Florida 32217, warrants the CSF/LSF to be free from defects in design, materials and workmanship (exclusive of abrasion, corrosion or erosion) for five (5) years from the date of shipment to the original purchaser or the date of notification of readiness to ship. Motor warranty is one (1) year. In order to claim the benefit of this warranty, buyer must notify manufacturer in writing of the claimed defect within ten (10) days after discovering it and return this equipment or parts to the factory with transportation prepaid. In the event of on-site repair, no service technician will be dispatched until manufacturer receives your written purchase order. If any of the following conditions exist, the warranty will be null and void: (1) Buyer has permitted other persons not approved or authorized by manufacturer to alter, adjust, replace or repair the equipment or any part thereof. (2) Buyer has not followed instructions or other directions given in the contract documents or our maintenance manual. (3) When breakage or other loss or damage is the result of any negligence, misuse or fault on the part of any operator or other person not under our supervision or control. (4) The defect is the result of designs or drawings made, furnished or specified by others. (5) In the case of goods not manufactured but supplied by the manufacturer as part of a contract, manufacturer shall only be liable to the same extent that our supplier is to manufacturer, not to exceed any liability manufacturer would have for warranty on our own equipment. (6) Buyer has not paid in full any invoices submitted to buyer which are due for payment. (7) Unusual wear and tear of the equipment.

Statements relating to the product, its use or installation made prior to the execution of the agreement, are not warranties except to the extent that the contrary is expressly set forth herein. It is understood that such statements were not intended to, and did not, form a part of the agreement; they were merely made in the course of negotiations of the parties.

THIS WARRANTY IS IN LIEU OF ANY OTHER EXPRESS OR IMPLIED WARRANTIES, INCLUDING ANY IMPLIED WARRANTY OF MERCHANTABILITY OR FITNESS FOR ANY PARTICULAR PURPOSE. OUR SOLE AND EXCLUSIVE OBLIGATION UNDER THIS WARRANTY IS TO REPAIR OR REPLACE DEFECTIVE EQUIPMENT OR PARTS OR, AT OUR OPTION, TO PAY THE REASONABLE COST OF REPAIR OR REPLACEMENT. BUYER AGREES THAT NO OTHER REMEDY (INCLUDING, BUT NOT LIMITED TO, INCIDENTAL OR CONSEQUENTIAL DAMAGES, DAMAGES FOR LOST PROFITS OR SALES, OR DAMAGES FOR INJURIES TO PERSON OR PROPERTY) SHALL BE AVAILABLE. NOTWITHSTANDING THE ABOVE, THE TOTAL AMOUNT THAT MAY IN ANY EVENT BE PAYABLE IN SETTLEMENT OF LIABILITY, HOWEVER INCURRED, SHALL NOT EXCEED THE CONTRACT PRICE.

DIMENSIONAL DATA



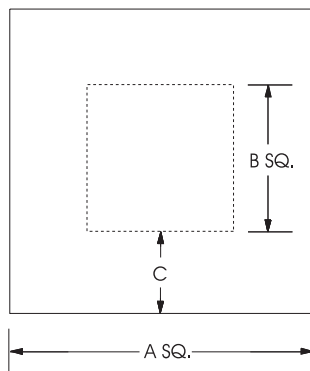
CSF

Discharge Opening

LSF

| Model Size | A Housing OD | B Overall Width | C Overall Height | D Intake Height | Roof Opening | E Curb Cap ID | Damper OD | Discharge Opening | Filter Size/No. | No. Tiers | Avg. Ship Weight (lbs.) |
|------------|--------------|-----------------|------------------|-----------------|--------------|---------------|-----------|-------------------|-----------------|-----------|-------------------------|
| CSF-9 | 24 -1/2 | 33-1/2 | 26-1/2 | 10-1/2 | 19-1/2 | 24 X 24 | 16 | 12 X 10-1/2 | 16 X 20 X 1 (4) | N/A | 265 |
| CSF-10 | 28-1/2 | 38-1/2 | 28-1/4 | 12-1/2 | 23-1/2 | 28 X 28 | 20 | 13-1/4 X 11-5/8 | 16 X 25 X 1 (4) | N/A | 290 |
| CSF-12 | 28-1/2 | 38-1/2 | 28-1/4 | 12-1/2 | 23-1/2 | 28 X 28 | 20 | 15-7/8 X 13-5/8 | 16 X 25 X 1 (4) | N/A | 340 |
| CSF-15 | 32-1/2 | 46-1/2 | 26 | 16 | 27-1/2 | 32 X 32 | 24 | 18-7/8 X 16-1/4 | 16 X 25 X 1 (4) | N/A | 380 |
| CSF-18 | 36-1/2 | 46-1/2 | 30 | 20 | 31-3/8 | 36 X 36 | 27 | 22-1/4 X 19 | 20 X 25 X 1 (4) | N/A | 540 |
| CSF-20 | 51-1/4 | 70 | 43 | 21 | 46 | 51 X 51 | 42 | 23-1/8 X 25 | 20 X 25 X 1 (8) | N/A | 890 |

| Model Size | A Housing OD | B Overall Width | C Overall Height | D Intake Height | Roof Opening | E Curb Cap ID | Damper OD | Discharge Opening | Filter Size/No. | No. Tiers | Avg. Ship Weight (lbs.) |
|------------|--------------|-----------------|------------------|-----------------|--------------|---------------|-----------|-------------------|-----------------------|-----------|-------------------------|
| LSF-9 | 24 -1/2 | 32 | 28-1/2 | 16 | 19-1/2 | 24 X 24 | 16 | 12 X 10-1/2 | 16 X 20 X 1 (4) | 3 | 265 |
| LSF-10 | 28-1/2 | 36 | 28-1/2 | 16 | 23-1/2 | 28 X 28 | 20 | 13-1/4 X 11-5/8 | 16 X 25 X 1 (4) | 3 | 290 |
| LSF-12 | 28-1/2 | 36 | 28-1/2 | 16 | 23-1/2 | 28 X 28 | 20 | 15-7/8 X 13-5/8 | 16 X 25 X 1 (4) | 3 | 340 |
| LSF-15 | 32-1/2 | 40-1/4 | 30 | 21-1/2 | 27-1/2 | 32 X 32 | 24 | 18-7/8 X 16-1/4 | 21-1/2 X 28 X 1 (4) | 4 | 380 |
| LSF-18 | 36-1/2 | 44-1/4 | 35 | 26-1/2 | 31-3/8 | 36 X 36 | 27 | 22-1/4 X 19 | 24 X 30 X 1 (4) | 5 | 540 |
| LSF-20 | 51-1/4 | 59 | 47 | 26-1/2 | 46 | 51 X 51 | 42 | 23-1/8 X 25 | 25-1/2 X 45-1/2 X (4) | 5 | 890 |



Duct Adaptor Dimensions

| Model/Size CSF/LSF | A SQ. | B SQ. | C |
|--------------------|--------|--------|-------|
| CSF/LSF-9 | 18-1/2 | 14-1/2 | 2 |
| CSF/LSF-10 | 22-1/2 | 18-1/2 | 2 |
| CSF/LSF-12 | 22-1/2 | 18-1/2 | 2 |
| CSF/LSF-15 | 26-1/2 | 20-1/2 | 3 |
| CSF/LSF-18 | 30-1/2 | 24-1/2 | 3 |
| CSF/LSF-20 | 45 | 30 | 7-1/2 |



6393 POWERS AVE.
JACKSONVILLE, FL 32217
P. 904.731.4711 F. 904.737.8322
WWW.JENCOFAN.COM

REPRESENTED BY: